

SABINE RIVER AUTHORITY OF TEXAS

TOLEDO BEND UNDERWATER STUMP REMOVAL RFB# 24-1201

THIS ADDENDUM IS ISSUED FOR THE PURPOSE OF AMENDING THE CONTRACT DOCUMENTS FOR THE SABINE RIVER AUTHORITY OF TEXAS, AS FOLLOWS:

Technical Specifications

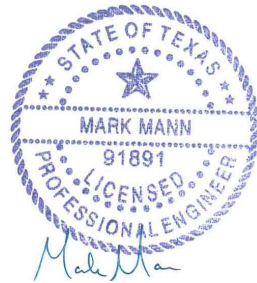
Revise Section 1.2.3 - project completion will be completed within **150 CONSECUTIVE CALENDAR DAYS**.

Clarifications

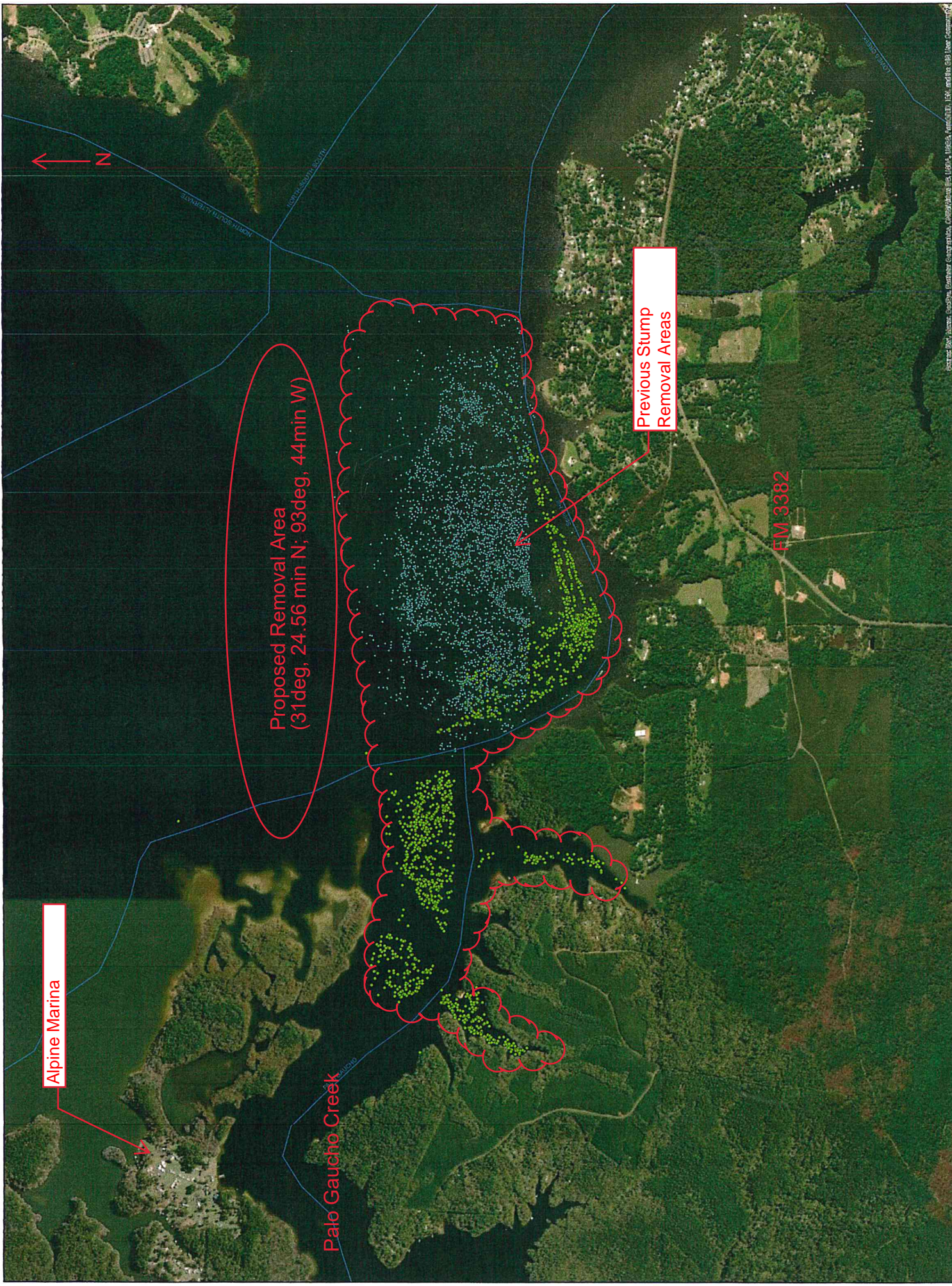
The following are clarifications to questions asked at the Pre Bid Meeting, emails, and CIVCAST:

- What is the average size of the stumps to be removed?
 - The Contractor can expect an average cut of approximately 12"-24".
- Are there pictures or videos of stumps?
 - No, there are no pictures or videos available.
- What is the average water depth?
 - Water depth varies from 6 ft to 40 ft, with nominal average depth of 30 ft in the area to be cut.
- Does SRA have a place for nightly mooring or refueling? If not are there facilities nearby?
 - SRA does not have a location for mooring or refueling. SRA will allow Contractor to store equipment at the Hemphill Shop (2699 Palo Gaucho Crossing - inland facility). Contractors can moor in the lake, preferably into a nearby cove clear of boat lanes. There are no on-water fueling facilities nearby. The contractor will need to coordinate bringing fuel to the work area to fuel equipment. Contractor to keep containment buoys, and absorbent pads on hand for any spills. Report major spills to SRA.
- Is a spud barge allowed as a work platform? If so, are there any pipeline crossings in the area.
 - Yes. Contractor responsible for notify 811 (one-call) for confirming utility locations prior to work.
- Are we allowed to operate 24 hours days? What are working hours?
 - The contract is consecutive calendar days (7 days a week). Contractor is allowed to work Weekends and Holidays as necessary. Contractor to coordinate with SRA on holiday and weekend work 2 days ahead of scheduled work. Contractor is made aware that boat traffic is heavier on Holiday and Weekends. Work hours are typically daylight to dusk. This allows boaters to see work crews when working near and in boat lanes.
- Will the GPS coordinates of the area to be worked be provided?
 - SRA crews will provide coordinates of the areas to be worked prior to starting. The general location is 31°24'56.89"N; 93°44'4.23"W .
- Will SRA be on site for debris removal? Does Contractor's responsibility for floaters end when they are brought to shoreline?
 - SRA will have a boat crew on site during all cutting operations. Once the contractor delivers floating logs to the nearest public boat launch, SRA will provide for removal and disposal.
- Will SRA provide assistance with mitigating boat traffic in the work area?
 - SRA will have a boat crew on site during all cutting operations. Crews will assist with boat traffic. Most areas to be cut will be outside the marked boat lanes.
- Does SRA require contractors to follow Army Corp EM 385 standards for dive crews?
 - Toledo Bend is not a Corp regulated lake and does not require adherence to Army Corp regulations. The contractor will be responsible for providing their own dive program and following all internal safety requirements for dive crews (if divers are used).

- Is there any State preference for Service Disabled Veteran owned small businesses?
 - SRA provides equal opportunity for all qualified parties including Historically Underutilized Businesses (HUBs). If your organization or any associated sub-contractors on the project are a certified HUB with the State of Texas, please submit documentation of the certified organization, including description of the work, percentage of the contract expected to be completed by the HUB, and the certification number of the HUB
- What are the nearest launch facilities to the work area?
 - There are public launch facilities at Frontier Park, Alpine Marina, Haborlight Marina, Lowes Creek Marina, and Cypress Bend Resort.
- Is there a more detailed location map?
 - Please see the updated location map.
- Will a copy of the Pre Bid Attendance roll be made available?
 - See the attached copy of the sign in sheet for the pre bid.



By _____ September 14, 2023 _____



Alpine Marina

Palo Gaucho Creek

Proposed Removal Area
(31deg, 24.56 min N; 93deg, 44min W)

Previous Stump
Removal Areas

FM 3382



NORTH SOUTH ALTERNATE

