



212 W. Ninth Street • Tyler, Texas 75701 • (903) 597-6606

Pendleton Property Park – Phase II

Addendum #1

Wednesday, November 30, 2022

TO: ALL HOLDERS OF CONSTRUCTION DOCUMENTS & CONTRACT DOCUMENTS

Your attention is directed to the following interpretations of, changes in, and additions to Contract Specifications for the Pendleton Property Park – Phase II.

1. Bid Due Date – Revised Date Below in *Notice to Bidders*. The bid due date has been extended to allow additional time for competitive pricing on the new bid items and alternates.
 - a. Sealed bids for the construction of the Project will be received at the **Office of the Division Manager** located at **the Toledo Bend Division Office** until **Thursday, December 13th, 2022, at 2 pm** local time. At that time the Bids received will be **publicly** opened and read.
2. The last day for questions will be Thursday, **December 6th, 2022 at 12pm**.
3. Additional Bid Items (Revised Bid Proposal has been added to this Addendum:
 - a. Bid Item 88 – Water line to CXT Restroom including but not limited to materials, trenching, backfill, assembly, and installation.
 - b. Alternate Bid Item 16 – Wood Truss Roof System at Large Pavilion, including but not limited to wood truss roof system with the steel and stone column as designed in bid line item 49, delivery, assembly, and installation. This line item will act as a substitute to the Large Pavilion listed in the Bid Items should the SRA decide this alternate route.
4. Construction Plan Revisions:
 - a. Sandblasted Concrete has been added to sheet C3 and C6 for the large Pavilion to match line item 18 in the Bid Proposal. Sheet C3 and C6 have been attached to this addendum.
 - b. Sheet C11 - Drainage plan has been revised to include 4" PVC perforated pipe for the Volleyball drainage that is detailed on sheet C26.
5. Contract Document Revisions:
 - a. Wood Truss Details have been provided by the manufacturer for Alternate Bid Item 16.
 - i. Contact: Randy Blanchard with Structural Wood Components – 281-850.1022
6. CIVCAST Questions:
 - a. What is the budget on this project. *\$3,250,000.00*
 - b. Per the prebid yesterday, we are requesting that the bid opening date be moved back 1 week due to the extraordinary amount of unit prices. *Confirmed, bid due date will be pushed to 12.13.2022.*
 - c. There is not a bid item for the water connection. Also, what is the size and type of main line are we tapping? *Line Item 88 has been added to addendum #1 for Water Line to CXT Restroom. The existing line is a 4" PVC Line.*
 - d. Can you please provide clarification and detail drawings of what is meant by 'PIP Playground Drain' and 'Sand Volleyball Drain'? *PIP Playground Drain Detail is on sheet C18. Sand Volleyball Drain is on the cross sections provided on sheet C26 and will be a 4" PVC perforated pipe.*

END OF ADDENDUM

NOTICE TO BIDDERS

Sabine River Authority of Texas Pendleton Property Park Ph. 2

General Notice

Sabine River Authority of Texas (Owner) is requesting Bids for the construction of the following Project:

Pendleton Property Park 23-1207

Sealed bids for the construction of the Project will be received at the **Office of the Division Manager** located at **the Toledo Bend Division Office** until **Tuesday, December 13th, 2022**, at **2 pm** local time. At that time the Bids received will be **publicly** opened and read.

Bids must be submitted and received no later than the opening date and time specified above. Any Bid received later than the specified time will not be considered and will be returned unopened. The SRA is not responsible for ensuring the delivery of Bids to our offices. Bids shall be sealed and clearly marked, "Request for Bid – Pendleton Property Park – 23-1207".

A **non-mandatory** Pre-Bid Conference between the SRA, prospective bidders, suppliers, etc. will be held on **Tuesday, November 22, 2022**, at **2 pm**. at the SRA Division Office, to make certain that the scope of work is fully understood. All interested parties are requested to attend.

The Sabine River Authority reserves the right to adopt the most advantageous interpretation of the bids submitted in the case of ambiguity or lack of clearness in stating proposal prices, to reject any or all bids, and/or waive any formalities.

Contract documents may be obtained by downloading (1) from www.sratx.org under doing business "bid opportunities" or (2) from CIVCAST USA Website. Hard copies of plans will not be made available for purchase.

Questions regarding contract documents may be sent via CIVCAST Website or emailed to purchasing@sratx.org.

Dates: **Thursday, November 3rd, 2022 – Thursday, November 10th, 2022**

Bid Proposal

Client: Sabine River Authority

Project: Pendleton Property Phase II - Sabine River Authority of Texas

Construction Plan Set C1-C27, L1-L8, S1-S8, E1-E5

The following bid items to include all labor, tools, equipment, superintendence, materials and any other requisite necessary to perform the work stated in accordance with the plans & specifications, complete and in place.

Item #	Quantity/Unit	Item Description & Written Price	Unit Price	Total
1	LS	Mobilize for the Project, including but not limited to project start-up and delivery of equipment _____ Dollars _____ Cents		
2	LS	General Conditions, including but not limited to project management, supervision and administration. _____ Dollars _____ Cents		
3	LS	Storm Water Pollution Prevention Plan and Erosion Control Elements, including but not limited to construction entrance, silt fencing, inlet protection, tree protection, erosion control matting, construction fencing and rock filter dams. _____ Dollars _____ Cents		
4	LS	Rough Site Grading, including but not limited to cut/fill _____ Dollars _____ Cents		
5	LS	Finished Site Grading, including but not limited final grading. _____ Dollars _____ Cents		
6	LS	Select Fill including but not limited to materials, delivery, excavation, installation and compaction. _____ Dollars _____ Cents		
7	LS	Subgrade Prep including but not limited to finishing grade and compaction. _____ Dollars _____ Cents		
8	58 CY	4"Gravel at Playground (EWF and PIP) , including but not limited to excavation, compacted subgrade, select fill, filter fabric, gravel placement and compaction. _____ Dollars _____ Cents		
9	78 CY	6"Gravel at Volleyball, including but not limited to excavation, compacted subgrade,filter fabric, gravel placement and compaction. _____ Dollars _____ Cents		

10	10 CY	Pea Gravel at Utility Yard behind CXT Building, including but not limited to excavation, compacted subgrade, gravel placement and compaction. _____ Dollars _____ Cents		
11	LS	Installation of Rock Rip Rap, including but not limited to excavation, compacted subgrade, gravel placement and compaction. SRA to provide Rock on Site _____ Dollars _____ Cents		
12	120 LF	12" Concrete Band at Playground w/ 1" Groove, including but not limited to excavation, compacted subgrade, concrete, reinforcing steel, saw joints, butt joints, and expansion joints. _____ Dollars _____ Cents		
13	55LF	12" Concrete Band at Beach, including but not limited to excavation, compacted subgrade, concrete, reinforcing steel, saw joints, butt joints, and expansion joints. _____ Dollars _____ Cents		
14	148 LF	12" Concrete Band w/ 4" Chamfer at Volleball, including but not limited to excavation, compacted subgrade, concrete, reinforcing steel, saw joints, butt joints, and expansion joints. _____ Dollars _____ Cents		
15	LS	Concrete Stairs throughout site, including but not limited to excavation, compacted subgrade, concrete, reinforcing steel, saw joints, butt joints, and expansion joints. _____ Dollars _____ Cents		
16	11,163 SF	4" Concrete Sidewalk, including but not limited to excavation, compacted subgrade, concrete, reinforcing steel, saw joints, butt joints, and expansion joints. _____ Dollars _____ Cents		
17	5,232 SF	4" Stamped Concrete Sidewalk, including but not limited to excavation, compacted subgrade, concrete, reinforcing steel, saw joints, butt joints, and expansion joints. _____ Dollars _____ Cents		

18	4,443 SF	Concrete, Rebar and Sand blasting at Large Pavilion, including but not limited to design layout, equipment, drop ledge, sand blasting, saw joints, butt joints, and expansion joints. _____ Dollars _____ Cents		
19	1,257 SF	Concrete, Rebar and Stamped Finish at Small Pavilion, including but not limited to design layout, equipment, stamped finish, saw joints, butt joints, and expansion joints. _____ Dollars _____ Cents		
20	8 EA	Piers at Large Pavilion including but not limited to excavation, structural fill, formwork, concrete, rebar and equipment. _____ Dollars _____ Cents		
21	8 EA	Piers at Small Pavilion including but not limited to excavation, structural fill, formwork, concrete, rebar and equipment. _____ Dollars _____ Cents		
22	956 CY	Import and Placement of Beach Sand(1' depth), including but not limited to excavation, grading, delivery, and installation. This line item carries a 30% increase for compaction. _____ Dollars _____ Cents		
23	203 CY	Import and Placement of Volleyball Sand(1' Depth), including but not limited to excavation, grading, delivery, and installation. This line item carries a 30% increase for compaction. _____ Dollars _____ Cents		
24	LS	Storm Sewer, including but not limited to delivery, trenching, installation and backfill of ADS, RCP, Junction Boxes, Catch Basins, Slot Drains, Outfall Structures _____ Dollars _____ Cents		
25	LS	3" PVC Conduit Sleeving, including but not limited to delivery, assemble, installation and backfill. _____ Dollars _____ Cents		

26	LS	Structural Retaining Wall at edge of beach, including but not limited to excavation, backfill, concrete wall and footer, and reinforcing steel. _____ Dollars _____ Cents		
27	LS	Stone Retaining Wall at Large Pavilion, including but not limited to to grading, concrete, reinforced steel, CMU block, builders block, dowels, gravel backfill, footer, and lueder cap. _____ Dollars _____ Cents		
28	LS	Boulder Retaining Wall, including but not limited to grading, boulder placement, concrete, footing, reinforced steel, mortar. _____ Dollars _____ Cents		
29	LS	Stone Seating Wall, including but not limited to grading, concrete, reinforced steel, CMU block, builders block, dowels, gravel backfill, footer, and lueder cap. _____ Dollars _____ Cents		
30	LS	Primary Electrical, including but not limited to delivery, trenching, backfill, assembly and installation. _____ Dollars _____ Cents	By Utility Provider	By Utility Provider
31	LS	High Velocity Fan, mounting supports, controls and branch circuit wiring, including but not limited to materials, delivery and installation. _____ Dollars _____ Cents		
32	LS	New Type 'A' LED pedestrian lights, poles, conductors, conduit, foundations, branch circuit breakers, branch curcuit wire, conduit and lighting controls, including but not limited to materials, delivery and installation. _____ Dollars _____ Cents		
33	LS	New Type 'B' LED Volleyball lights, Poles, Conductors, Conduit, foundations, Branch Circuit Breakers, Contactors, Branch Circuit Wire, Conduit and Lighting Controls, including but not limited to materials, delivery and installation. _____ Dollars _____ Cents		

34	LS	<p>New Type 'C' LED Bollard lights, Conductors, Conduit, foundations, Branch Circuit Breakers, Contactors, Branch Circuit Wire, Conduit and Lighting Controls, including but not limited to materials, delivery and installation.</p> <p>_____ Dollars</p> <p>_____ Cents</p>		
35	LS	<p>New Type 'D' LED Pavilion lights, Conductors, Conduit, Contactors, Branch Circuit Wire, Conduit and Lighting Controls, including but not limited to materials, delivery and installation.</p> <p>_____ Dollars</p> <p>_____ Cents</p>		
36	LS	<p>LED Rope lighting, Conductors, Conduit, mounting hardware Branch Circuit Breakers, Branch Circuit Wire, Conduit and Lighting Controls, including but not limited to materials, delivery and installation.</p> <p>_____ Dollars</p> <p>_____ Cents</p>		
37	LS	<p>LED Step lighting, Conductors, Conduit, foundations, Branch Circuit Breakers, Branch Circuit Wire, Conduit and Lighting Controls, including but not limited to materials, delivery and installation.</p> <p>_____ Dollars</p> <p>_____ Cents</p>		
38	LS	<p>Entry Sign lighting, Fixtures, Conductors, Conduit, foundations, Branch Circuit Breakers, Branch Circuit Wire, Conduit and Lighting Controls, including but not limited to materials, delivery and installation.</p> <p>_____ Dollars</p> <p>_____ Cents</p>		
39	LS	<p>Type 'J' Pavilion lighting LED Lights, Conductors, Conduit, foundations, Branch Circuit Breakers, Branch Circuit Wire, Conduit and Lighting Controls, including but not limited to materials, delivery and installation.</p> <p>_____ Dollars</p> <p>_____ Cents</p>		
40	LS	<p>Receptacles, Boxes, Conduit, Branch Circuit Wiring, including but not limited to materials, delivery and installation.</p> <p>_____ Dollars</p> <p>_____ Cents</p>		

41	LS	<p>Septic System to Santiago CXT Building and Footwash, including but not limited to tanks, cleanouts, valves, feeder line, septic heads, trenching, backfill, delivery, assembly and installation.</p> <p>_____ Dollars</p> <p>_____ Cents</p>		
42	LS	<p>Irrigation System, including but not limited to spray heads, bubblers, pvc pipe, sleeves, timers, controllers, double checks, valves, trenching, backfill, delivery, assembly and installation.</p> <p>_____ Dollars</p> <p>_____ Cents</p>		
43	132 LF	<p>Metal and Stainless-Steel Cable Railing, including but not limited to delivery, materials, assembly, and installation</p> <p>_____ Dollars</p> <p>_____ Cents</p>		
44	136 LF	<p>Metal and Stainless-Steel Cable Hand-Railing, including but not limited to delivery, materials, assembly, and installation</p> <p>_____ Dollars</p> <p>_____ Cents</p>		
45	92 LF	<p>Wrought Iron Fence at Santiago CXT Building, including but not limited to delivery, materials, assembly, and installation</p> <p>_____ Dollars</p> <p>_____ Cents</p>		
46	LS	<p>Santiago CXT Restroom, included but not limited to delivery, assembly, electrical, plumbing, water, installation, and backfill. (Refer to CXT Quote in Contract Documents)</p> <p>_____ Dollars</p> <p>_____ Cents</p>		
47	LS	<p>Pad Preparation for Santiago CXT Restroom, included but not limited to excavation, grading, select fill, compaction and final grading.</p> <p>_____ Dollars</p> <p>_____ Cents</p>		
48	LS	<p>Playground, included but not limited to materials, delivery, assembly, installation, and backfill.</p> <p>_____ Dollars</p> <p>_____ Cents</p>		
49	LS	<p>Large Pavilion with Stone Columns, included but not limited to materials, delivery, assembly, installation, and backfill.</p> <p>_____ Dollars</p> <p>_____ Cents</p>		

50	LS	Small Pavilion, included but not limited to materials, delivery, assembly, installation, and backfill. _____ Dollars _____ Cents		
51	LS	Accudock Kayak Launch, Gangway and Hinge, included but not limited to materials, delivery, assembly, and installation. _____ Dollars _____ Cents		
52	LS	Volleyball Poles and Net, included but not limited to delivery, assembly, installation, and backfill. _____ Dollars _____ Cents		
53	1 EA	MDF Shower/Foot Wash, included but not limited to delivery, assembly, plumbing, pvc pipe, trenching, installation, and backfill. _____ Dollars _____ Cents		
54	LS	Monument Entry Sign, included but not limited to delivery, assembly, installation, and backfill. _____ Dollars _____ Cents		
55	2 EA	80' Flag Poles & Flags, included but not limited to materials, delivery, assembly, electrical, installation, and backfill. _____ Dollars _____ Cents		
56	11 EA	Moss Boulders, included but not limited to delivery, assembly, installation, and backfill. _____ Dollars _____ Cents		
57	7 EA	Ledge Stone Benches, included but not limited to delivery, assembly, installation, and backfill. _____ Dollars _____ Cents		
58	4 EA	Ultra-Site Benches, included but not limited to delivery, assembly, and installation. _____ Dollars _____ Cents		
59	7 EA	Ultra-Site Trash Bins, included but not limited to delivery, assembly, and installation. _____ Dollars _____ Cents		
60	8 EA	Ultra-Site Square Picnic Tables, included but not limited to delivery, assembly and installation. _____ Dollars _____ Cents		

61	7 EA	Anova Canyon Fusion Advantage Steel Gabion Benches, included but not limited to delivery, assembly and installation. _____ Dollars _____ Cents		
62	14 EA	Ultra-Site Rectanglar Picnic Tables (10 Regular & 4 ADA), included but not limited to delivery, assembly, and installation. _____ Dollars _____ Cents		
63	8 EA	Concrete Adirondack Chairs, included but not limited to delivery, assembly, and installation. _____ Dollars _____ Cents		
64	7 EA	Shumard Red Oak, included but not limited to purchase, delivery, bed preparation, planting, and warranty in accordance with the plan and specs. _____ Dollars _____ Cents		
65	5 EA	Southern Live Oak, included but not limited to purchase, delivery, bed preparation, planting, and warranty in accordance with the plan and specs. _____ Dollars _____ Cents		
66	7 EA	Bald Cypress, included but not limited to purchase, delivery, bed preparation, planting, and warranty in accordance with the plan and specs. _____ Dollars _____ Cents		
67	3 EA	Cedar Elm, included but not limited to purchase, delivery, bed preparation, planting, and warranty in accordance with the plan and specs. _____ Dollars _____ Cents		
68	7 EA	Eastern Redbud, included but not limited to purchase, delivery, bed preparation, planting, and warranty in accordance with the plan and specs. _____ Dollars _____ Cents		
69	9 EA	Warren's Red Possumhaw, included but not limited to purchase, delivery, bed preparation, planting, and warranty in accordance with the plan and specs. _____ Dollars _____ Cents		

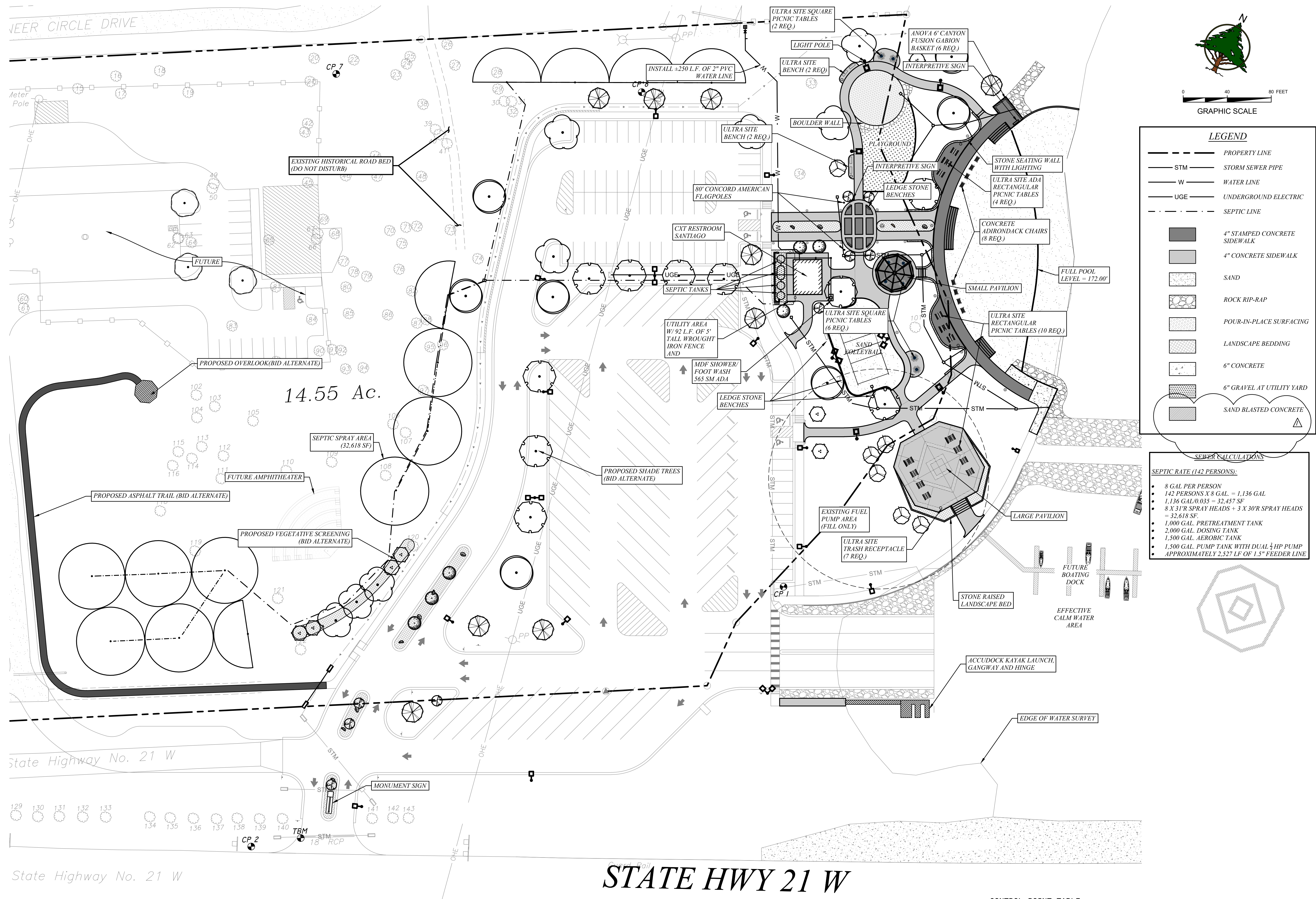
70	6 EA	American Holly, included but not limited to purchase, delivery, bed preparation, planting, and warranty in accordance with the plan and specs. _____ Dollars _____ Cents		
71	6 EA	Sweetbay Magnolia, included but not limited to purchase, delivery, bed preparation, planting, and warranty in accordance with the plan and specs. _____ Dollars _____ Cents		
72	99,765 SF	Bermuda Grass SOD, included but not limited to purchase, delivery, planting, and warranty in accordance with the plan and specs. _____ Dollars _____ Cents		
73	8 EA	Romeo Clevera, included but not limited to purchase, delivery, bed preparation, planting, and warranty in accordance with the plan and specs. _____ Dollars _____ Cents		
74	36 EA	Andorra Juniper, included but not limited to purchase, delivery, bed preparation, planting, and warranty in accordance with the plan and specs. _____ Dollars _____ Cents		
75	17 EA	Plum Delight Loropetalum, included but not limited to purchase, delivery, bed preparation, planting, and warranty in accordance with the plan and specs. _____ Dollars _____ Cents		
76	16 EA	Dwarf Wax Myrtle, included but not limited to purchase, delivery, bed preparation, planting, and warranty in accordance with the plan and specs. _____ Dollars _____ Cents		
77	73 EA	Lemon Drift Rose, included but not limited to purchase, delivery, bed preparation, planting, and warranty in accordance with the plan and specs. _____ Dollars _____ Cents		
78	17 EA	Dwarf Palmetto, included but not limited to purchase, delivery, bed preparation, planting, and warranty in accordance with the plan and specs. _____ Dollars _____ Cents		

79	23 EA	Goldmound Japanese Spirea, included but not limited to purchase, delivery, bed preparation, planting, and warranty in accordance with the plan and specs. _____ Dollars _____ Cents		
80	80 EA	Pink Muhly Grass, included but not limited to purchase, delivery, bed preparation, planting, and warranty in accordance with the plan and specs. _____ Dollars _____ Cents		
81	45 EA	Little Bunny Fountain Grass, included but not limited to purchase, delivery, bed preparation, planting, and warranty in accordance with the plan and specs. _____ Dollars _____ Cents		
82	49 EA	Texas Lantana, included but not limited to purchase, delivery, bed preparation, planting, and warranty in accordance with the plan and specs. _____ Dollars _____ Cents		
83	6 EA	Turk's Cap, included but not limited to purchase, delivery, bed preparation, planting, and warranty in accordance with the plan and specs. _____ Dollars _____ Cents		
84	87 EA	Common Yarrow, included but not limited to purchase, delivery, bed preparation, planting, and warranty in accordance with the plan and specs. _____ Dollars _____ Cents		
85	24 EA	Lanceleaf Tickseed, included but not limited to purchase, delivery, bed preparation, planting, and warranty in accordance with the plan and specs. _____ Dollars _____ Cents		
86	58 EA	Louisiana Woodland Phlox, included but not limited to purchase, delivery, bed preparation, planting, and warranty in accordance with the plan and specs. _____ Dollars _____ Cents		
87	LS	Bed Preparation including but not limited to steel edging, fertilization, select fill and bark mulch. _____ Dollars _____ Cents		

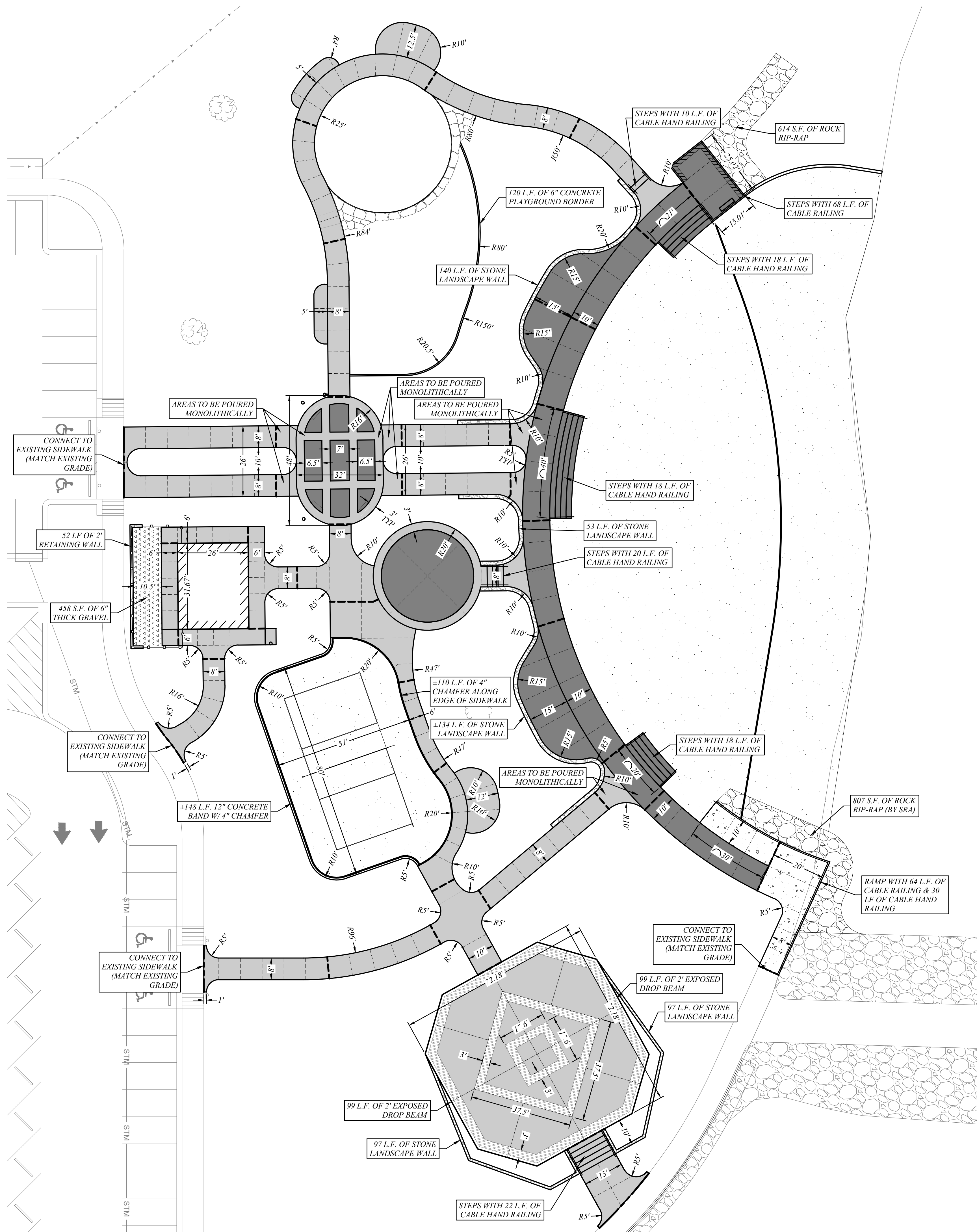
88	LS	Water line to CXT Restroom including but not limited to materials, trenching, backfill, assembly, and installation. <div>_____ Dollars</div> <div>_____ Cents</div>		
Total Base Bid		<div>\$ _____ Dollars</div> <div>_____ Cents</div>		
Bid Alternates				
Item #	Quantity/Unit	Item Description & Written Price	Unit Price	Total
1	LS	Overlook, including but not limited to purchase, materials, piers, delivery, assembly, and installation. <div>_____ Dollars</div> <div>_____ Cents</div>		
2	3,687 SF	Pavement for sidewalk to Overlook, including but not limited to 1.5" HMA (Type D), surface preparation, aggregate base, subgrade, butt joint, asphalt and compaction. <div>_____ Dollars</div> <div>_____ Cents</div>		
3	2 EA	Interpretive Signage, including but not limited to purchase, delivery, and installation. <div>_____ Dollars</div> <div>_____ Cents</div>		
4	19 EA	Profusion Beautyberry, included but not limited to purchase, delivery, bed preparation, planting, and warranty in accordance with the plan and specs. <div>_____ Dollars</div> <div>_____ Cents</div>		
5	41 EA	Henry's Garnet Sweetspire, included but not limited to purchase, delivery, bed preparation, planting, and warranty in accordance with the plan and specs. <div>_____ Dollars</div> <div>_____ Cents</div>		
6	33 EA	Dwarf Wax Myrtle, included but not limited to purchase, delivery, bed preparation, planting, and warranty in accordance with the plan and specs. <div>_____ Dollars</div> <div>_____ Cents</div>		
7	16 EA	Turk's Cap, included but not limited to purchase, delivery, bed preparation, planting, and warranty in accordance with the plan and specs. <div>_____ Dollars</div> <div>_____ Cents</div>		

8	5,785 SF	Native Grass Seed - 'Piney Woods Ecoregion - Sandy Soil Mix' at Alternate Trail, including but not limited to purchase, delivery, and installation. _____ Dollars _____ Cents		
9	5,785 SF	Bermuda Hydromulch - at Alternate Trail, including but not limited to purchase, delivery, and installation. _____ Dollars _____ Cents		
10	1 EA	Shumard Red Oak, included but not limited to purchase, delivery, bed preparation, planting, and warranty in accordance with the plan and specs. _____ Dollars _____ Cents		
11	2 EA	Southern Live Oak, included but not limited to purchase, delivery, bed preparation, planting, and warranty in accordance with the plan and specs. _____ Dollars _____ Cents		
12	2 EA	Bald Cypress, included but not limited to purchase, delivery, bed preparation, planting, and warranty in accordance with the plan and specs. _____ Dollars _____ Cents		
13	7 EA	Cedar Elm, included but not limited to purchase, delivery, bed preparation, planting, and warranty in accordance with the plan and specs. _____ Dollars _____ Cents		
14	LS	Storm Sewer, including but not limited to delivery, trenching, installation and backfill of RCP and Headwalls _____ Dollars _____ Cents		
15	LS	PIP at playground in lieu of EWF. including but not limited to purchase, delivery, select fill, and installtion. _____ Dollars _____ Cents		
16	LS	PIP at playground in lieu of EWF. including but not limited to purchase, delivery, select fill, and installtion. _____ Dollars _____ Cents		
Total Alternate Bid		\$ _____ Dollars _____ Cents		

L:\River Authorities\21-021 Pendleton Property Park (Sabine River Authority)\CAD - PHASE 203 - Production\SITE PLAN.dwg

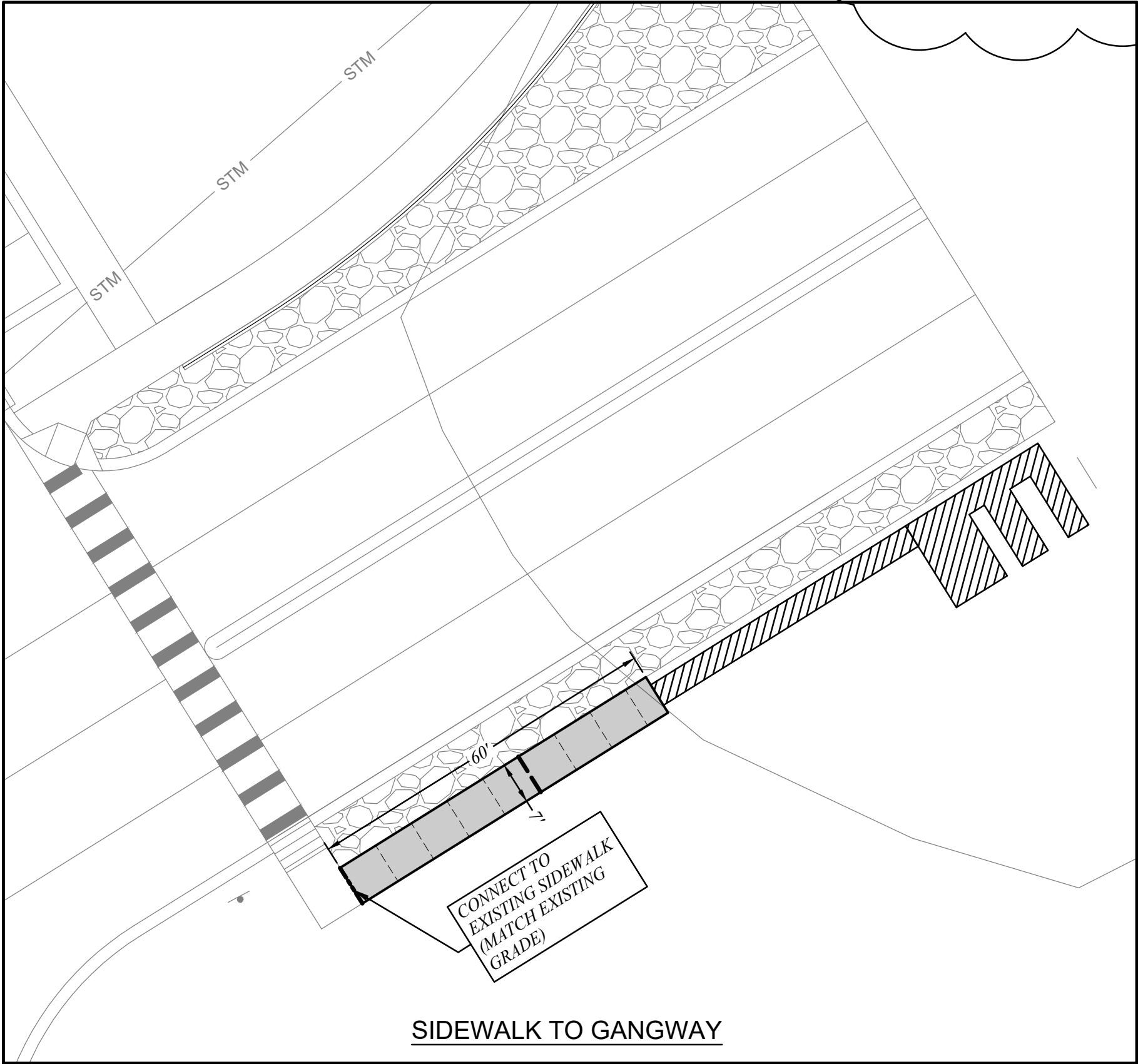
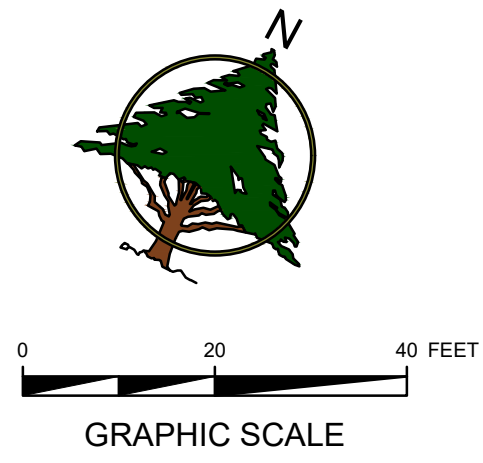


L:\River Authorities\21-021 Pendleton Property Park (Sabine River Authority)\CAD - PHASE 203 - Production\PAVING PLAN.dwg



- NOTES:
1. ALL DIMENSIONS ARE TO FACE OF CURB UNLESS OTHERWISE NOTED.
 2. ALL PAVING OPERATIONS SHALL CONFORM TO THE RECOMMENDATIONS PER THE GEOTECHNICAL REPORT (JOB #93215101) BY TERRACON DATED 1/7/2022.
 3. COORDINATES ARE BASED ON NAD83 TEXAS STATE PLANE, CENTRAL ZONE (4203).
 4. ALL TRAIL RUNNING SLOPES SHALL NOT EXCEED 5% AND ALL TRAIL CROSS SLOPES SHALL NOT EXCEED 2%. ALL TRAIL INTERSECTIONS SHALL NOT EXCEED 2%.
 5. ROCK RIP-RAP MATERIAL TO BE PROVIDED BY SABINE RIVER AUTHORITY AND INSTALLED BY CONTRACTOR.

LEGEND	
	CONTROL JOINT
	EXPANSION JOINT
	LONGITUDINAL BUTT JOINT
	4" STAMPED CONCRETE SIDEWALK
	4" CONCRETE SIDEWALK
	6" CONCRETE
	SAND
	6" GRAVEL
	ROCK RIP-RAP
	SAND BLASTED CONCRETE



REVISIONS:
ADDENDUM #1 - 11.30.2022

PAVING PLAN

PENDLETON PROPERTY PHASE 2

SABINE RIVER AUTHORITY OF TEXAS

DRAWN: NSR

CHECKED: WHS

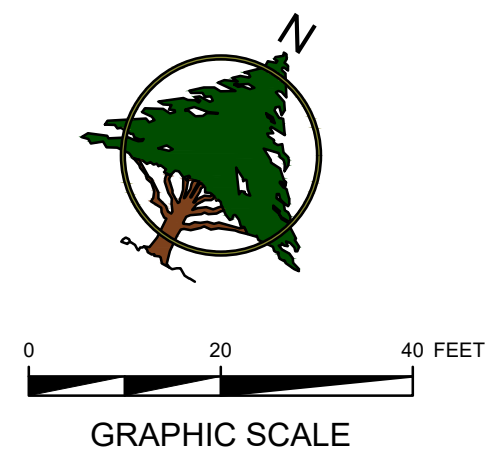
DATE: 11/30/2022

SCALE: AS SHOWN

JOB NO.: 21-021

C6

L:\River Authorities\21-021 Pendleton Property Park (Sabine River Authority)\CAD - PHASE 203 - Production\DRAINAGE PLAN.dwg



LEGEND

---	PROPERTY LINE
---	EXISTING CONTOUR
---	PROPOSED CONTOUR
STM	STORM DRAIN
→	DIRECTION OF FLOW
→	FLOW ARROW
FL IN	FLOW LINE IN
FL OUT	FLOW LINE OUT
TI	TOP OF INLET
Q	FLOW (CFS)
C	CAPACITY (CFS)
V	VELOCITY (FPS)

NOTES:
ACO CLASSIC DRAIN LINE AND COVER TO
BE SUBMITTED AND APPROVED BY
CONSULTANT PRIOR TO PURCHASE.

REVISIONS:
ADDENDUM #1 - 11.30.2022

STATE OF TEXAS
WILLIAM H. SPENCER
107759
LICENSED PROFESSIONAL ENGINEER
10-20-22

MHS
PLANNING & DESIGN, LLC
212 West Ninth Street, Suite 100, Texas 75701
713-597-6000
TEPE No. 14571 TDAE - DR4525

DRAINAGE PLAN

PENDLETON PROPERTY PHASE 2

SABINE RIVER AUTHORITY OF TEXAS

DRAWN: SPF

CHECKED: WHS

DATE: 11/30/2022

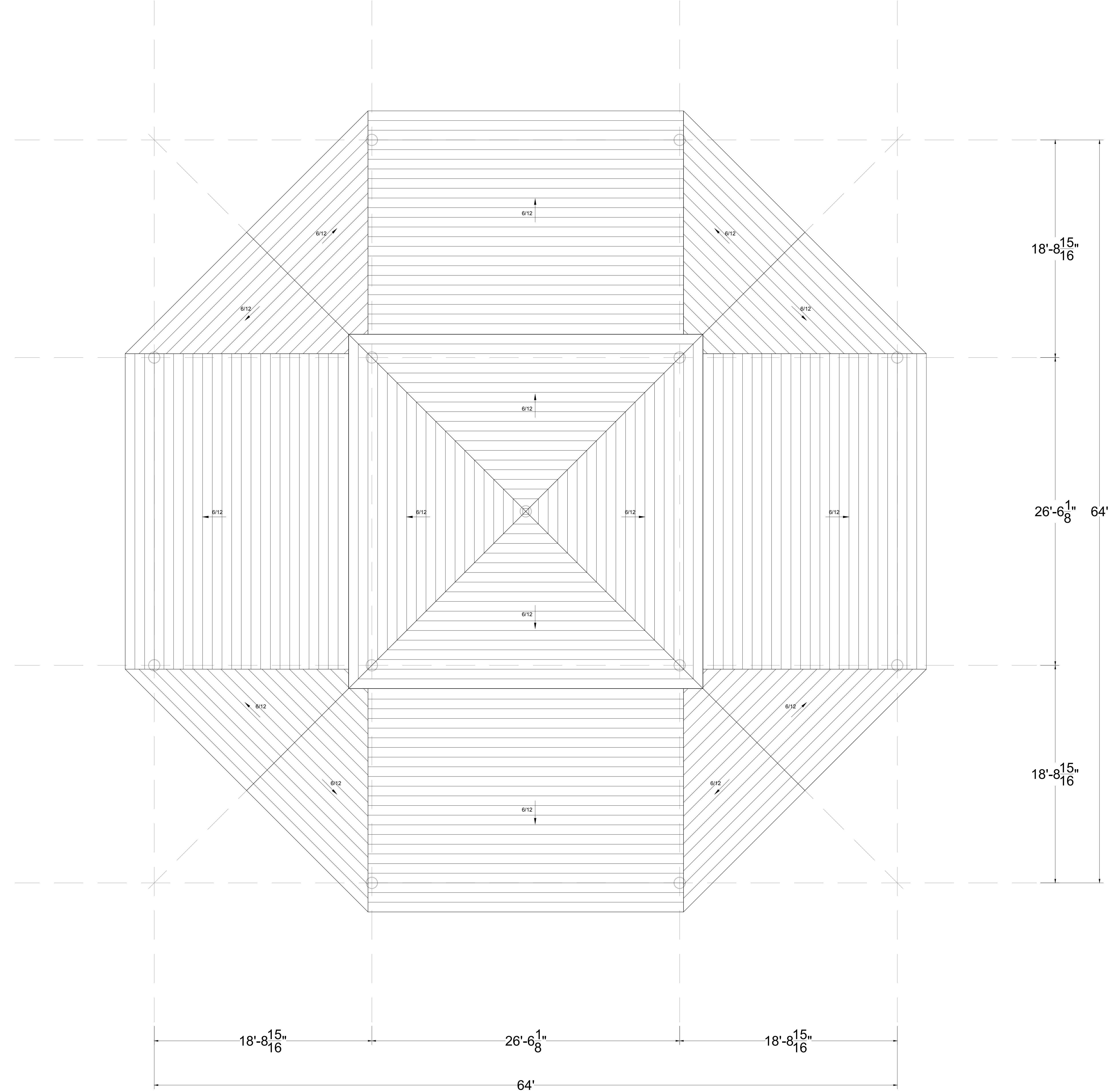
SCALE: AS SHOWN

JOB NO.: 21-021

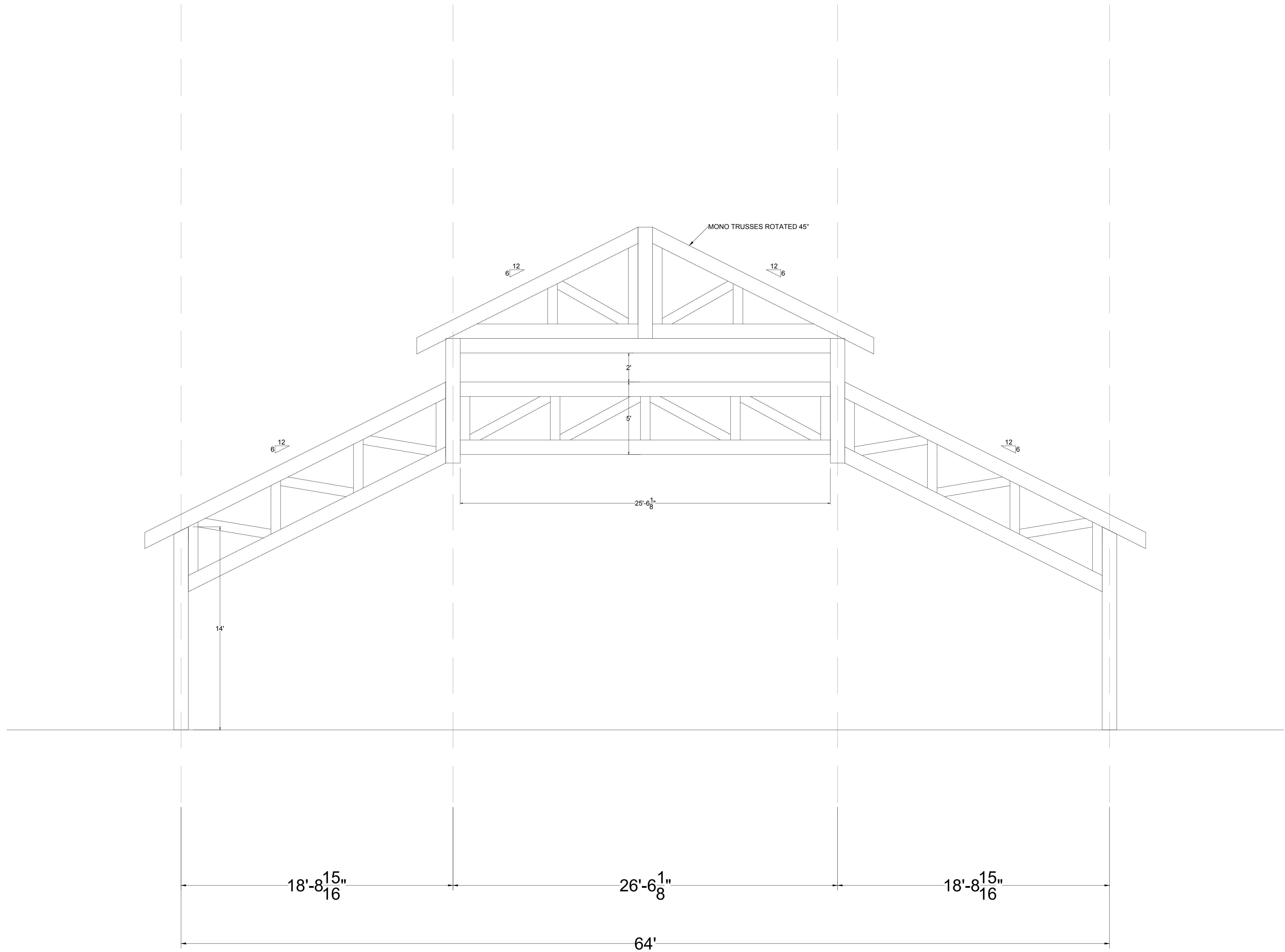
C11



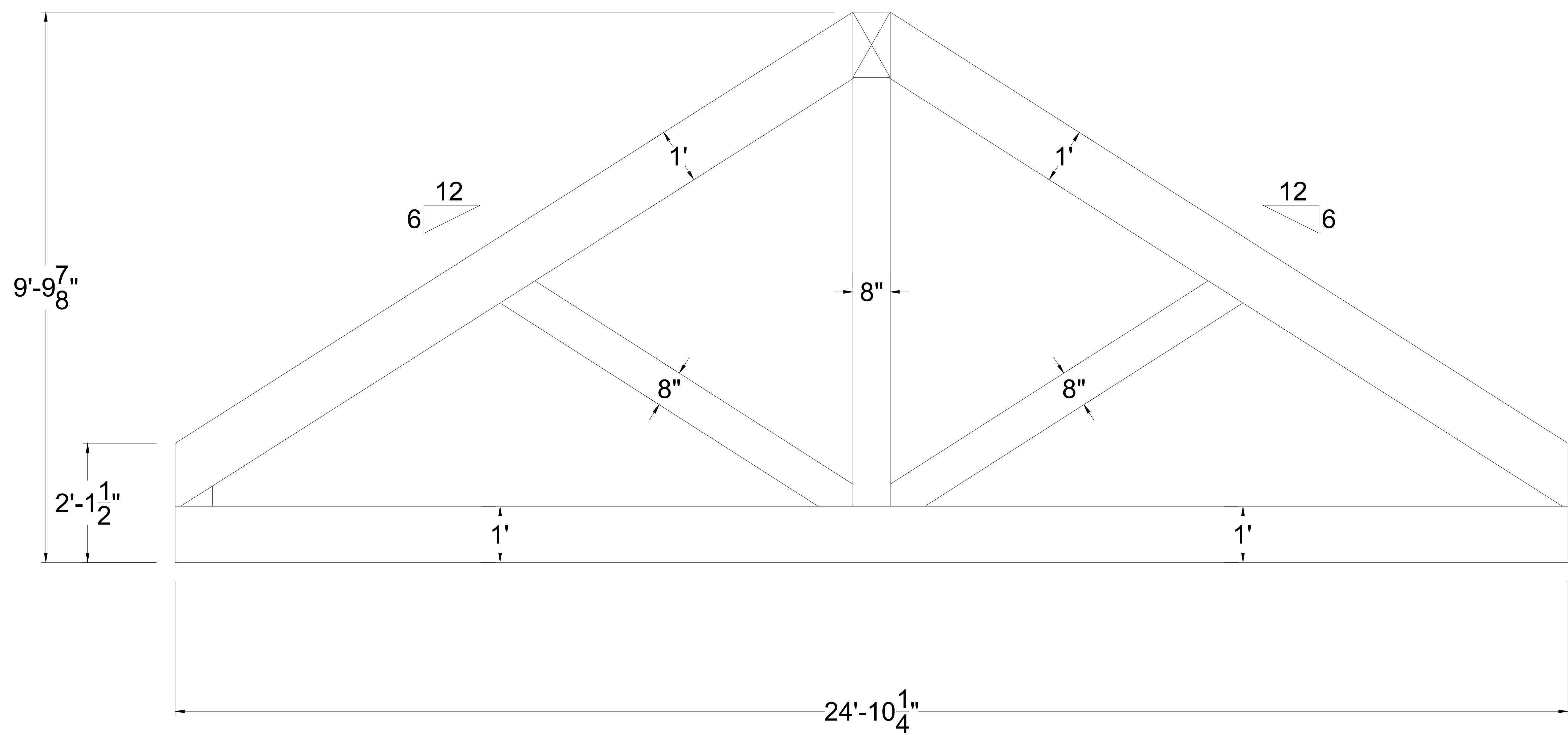
Know what's below.
Call before you dig.



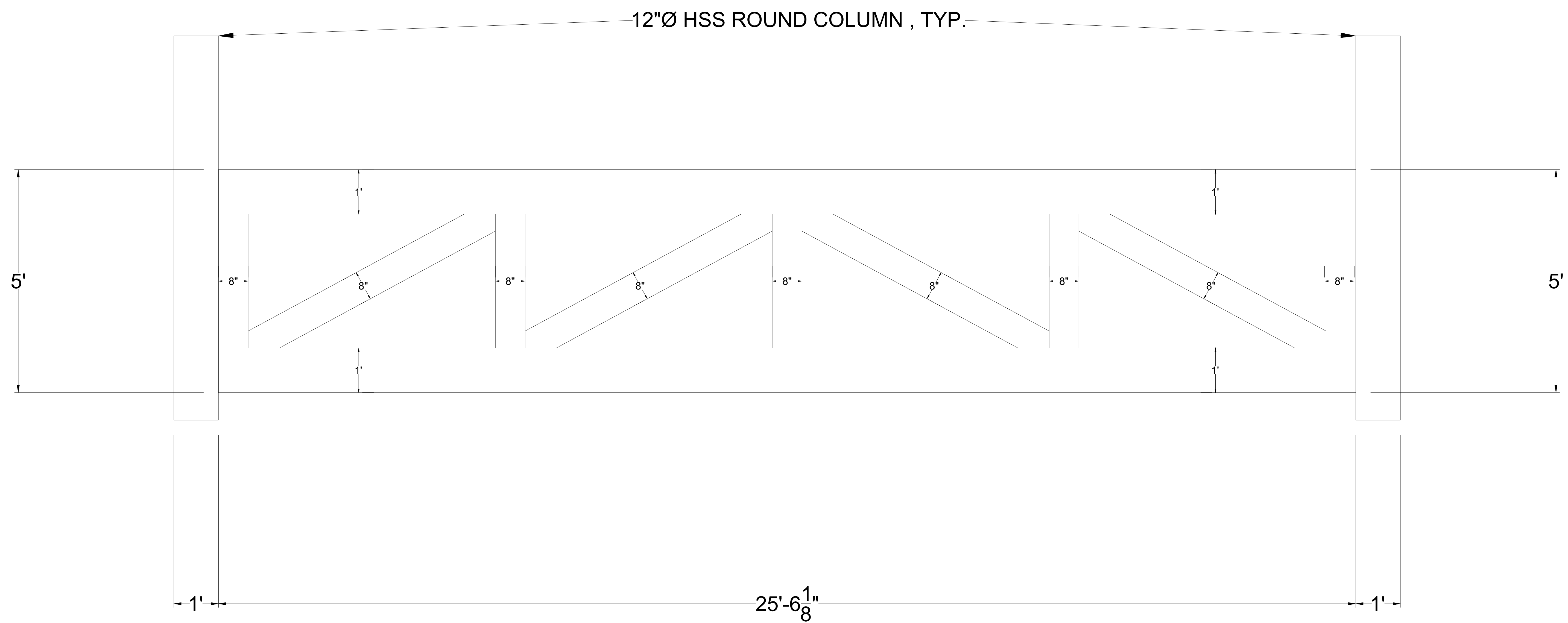
Wood Species	Members	Gusset Plates	Bolting	Customer Name	Sam Collins Park	<div> STRUCTURAL WOOD COMPONENTS PO BOX 35420 Houston, TX 77235 Phone: 281-259-0668 Fax: 281-259-6018</div>
RS DF	VARIES	3/8" EXPOSED FINISH MATTE BLACK	5/8" A307 FINISH MATTE BLACK	Customer Job	Decking Plan	
				Drawing Date	9/13/22	
				Quantity	1	



Wood Species	Members	Gusset Plates	Bolting	Customer Name	Sam Collins Park	
RS DF	VARIES	3/8" EXPOSED FINISH MATTE BLACK	5/8" A307 FINISH MATTE BLACK	Customer Job	Elevation	
				Drawing Date	9/13/22	
				Quantity	1	
<div>PO BOX 35420Houston, TX 77235</div> <div>Phone: 281-259-0668Fax: 281-259-6018</div>						

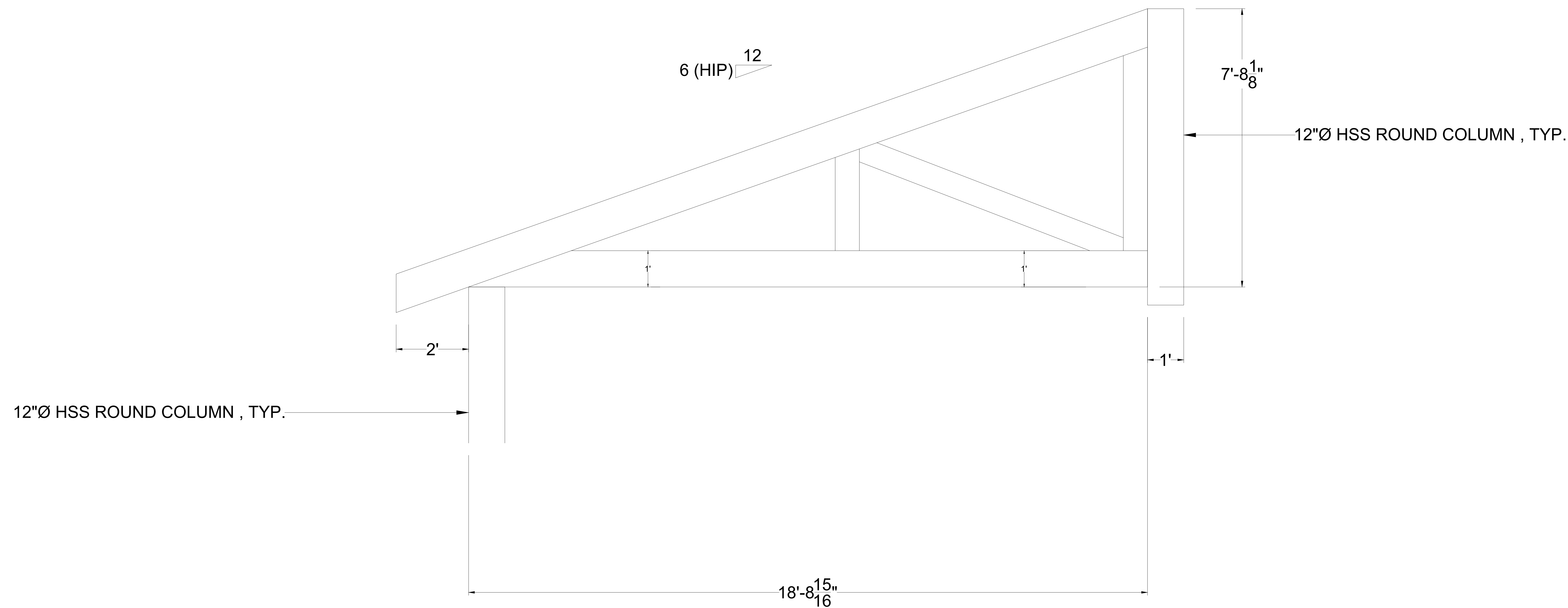


Wood Species	Members	Gusset Plates	Bolting	Customer Name	Sam Collins Park	
RS DF	8x12 TC / BC 8x8 WEBS	3/8" EXPOSED FINISH MATTE BLACK	5/8" A307 FINISH MATTE BLACK	Customer Job	Gable Trusses	
				Drawing Date	9/13/22	
				Quantity	4	
				PO BOX 35420 Houston, TX 77235		Phone: 281-259-0668 Fax: 281-259-6018

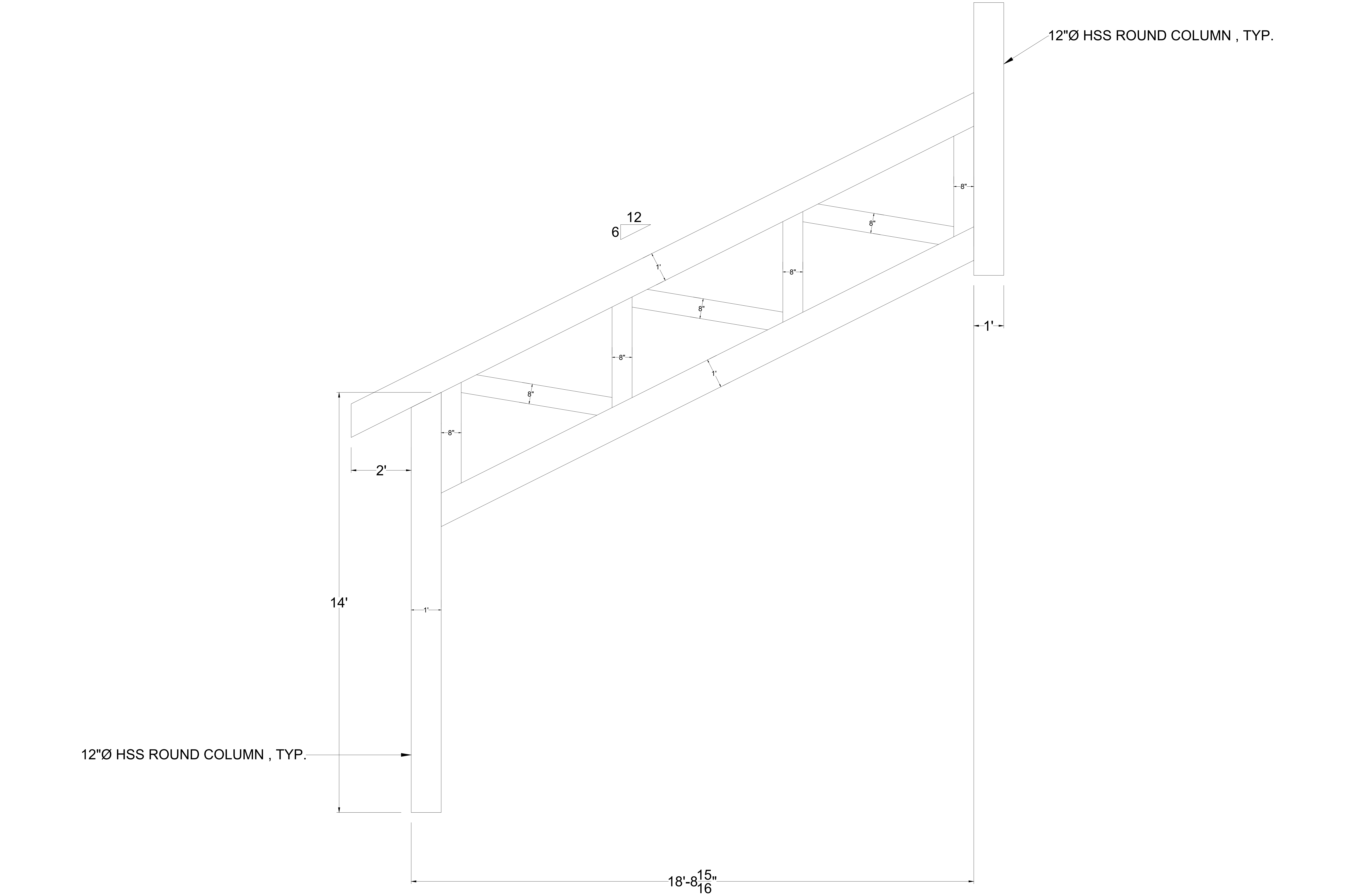


Wood Species	Members	Gusset Plates	Bolting	Customer Name	Sam Collins Park	 STRUCTURAL WOOD COMPONENTS PO BOX 35420 Houston, TX 77235 Phone: 281-259-0668 Fax: 281-259-6018
RS DF	8x12 TC / BC 8x8 WEBS	3/8" EXPOSED FINISH MATTE BLACK	5/8" A307 FINISH MATTE BLACK	Customer Job	Girder Trusses	
				Drawing Date	9/13/22	
				Quantity	4	





Wood Species	Members	Gusset Plates	Bolting	Customer Name	Sam Collins Park	 STRUCTURAL WOOD COMPONENTS PO BOX 35420 Houston, TX 77235 Phone: 281-259-0668 Fax: 281-259-6018
RS DF	8x12 TC / BC 8x8 WEBS	3/8" EXPOSED FINISH MATTE BLACK	5/8" A307 FINISH MATTE BLACK	Customer Job	Mono Trusses	
				Drawing Date	9/13/22	
				Quantity	4	



Wood Species	Members	Gusset Plates	Bolting	Customer Name	Sam Collins Park	<div><p>STRUCTURAL WOOD COMPONENTS</p><p>PO BOX 35420 Houston, TX 77235</p><p>Phone: 281-259-0668 Fax: 281-259-6018</p></div>
RS DF	8x12 TC / BC 8x8 WEBS	3/8" EXPOSED FINISH MATTE BLACK	5/8" A307 FINISH MATTE BLACK	Customer Job	Scissor Trusses	
				Drawing Date	9/13/22	
				Quantity	8	

