

June 27, 2022

ADDENDUM NO. 1

**SABINE RIVER AUTHORITY – GULF COAST DIVISION
RFB # 22-1208 GCD BLUEBIRD RECREATIONAL AREA IMPROVEMENTS**

THIS ADDENDUM IS ISSUED FOR THE PURPOSE OF AMENDING THE PLANS AND SPECIFICATIONS FOR THE SABINE RIVER AUTHORITY – GULF COAST DIVISION RFB # 22-1208 GCD BLUEBIRD RECREATIONAL AREA IMPROVEMENTS:

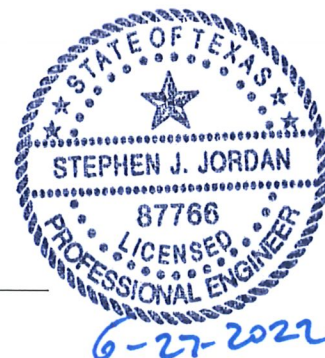
1. BID FORM – Remove BID FORM in its entirety and replace with the attached BID FORM (12 pages).
2. BID OPENING SHEET – Remove and Replace BID OPENING SHEET in its entirety. Additive bid items are separated out for clarification. (1 page)
3. PLAN SHEETS – Remove PLAN SHEETS (1-14) in their entirety and replace with the attached PLAN SHEETS (1-14). Changes are indicated on each sheet with the appropriate Addendum 1 symbol. (14 pages). Of note, the security light and power pole changes will be by others. Additional striping to include a stripe at the boat ramp and travel direction arrows. Proposed dock extension angle is changed. Dimensions added to proposed sidewalks and kayak launch.
4. Technical Specification Item #95 – Asphalt Pavement Rehabilitation – Remove Item 360 and Item 440.
5. Technical Specification Item # 6005 – Composite Decking: MoistureShield and WearDeck are hereby approved manufacturers for composite decking.
6. CLARIFICATION: Engineer's estimate is \$400,000
7. CLARIFICATION: Contractor to coordinate with Bluebird Fishcamp Restaurant to allow access for employees and patrons during construction.
8. CLARIFICATION: Construction Material Testing will be by Owner. Contractor shall coordinate all required testing with the Owner's selected lab.
9. Sign in sheet from the Pre-Bid Conference is attached. (1 page)

29 PAGES TOTAL ADDENDUM #1

END ADDENDUM #1



Steve J. Jordan, P.E.



BID FORM FOR CONSTRUCTION CONTRACT

The terms used in this Bid with initial capital letters have the meanings stated in the Instructions to Bidders, the General Conditions, and the Supplementary Conditions.

ARTICLE 1—OWNER AND BIDDER

- 1.01 This Bid is submitted to: **Sabine River Authority of Texas: Gulf Coast Division, 1922 IP Way, Orange Texas 77632**
- 1.02 The undersigned Bidder proposes and agrees, if this Bid is accepted, to enter into an Agreement with Owner in the form included in the Bidding Documents to perform all Work as specified or indicated in the Bidding Documents for the prices and within the times indicated in this Bid and in accordance with the other terms and conditions of the Bidding Documents. All prices shall be stated in both words and figures; however, do not extend the unit price. If the unit price is extended, the extension shall be ignored in tabulating the bids(*). In case of discrepancy between the written amounts and the figures, the written amounts shall govern.

ARTICLE 2—ATTACHMENTS TO THIS BID

- 2.01 The following documents are submitted with and made a condition of this Bid:
 - A. Required Bid security;
 - B. Vendor Certification to State Law;
 - C. Conflict of Interest;
 - D. Required Bidder Qualification Statement with supporting data;
 - E. Form W-9;
 - F. Bonding Company Information
 - G. Bid Opening Sheet
 - H. Non-Collusion Affidavit(s)
 - I. Additional Items as stipulated in the request

ARTICLE 3—BASIS OF BID—LUMP SUM BID AND UNIT PRICES**3.01 Unit Price Bids**

A. Bidder will perform the following Work at the indicated unit prices:

Item	Quantity	Unit	Description	Unit Price	Total Price
<u>BASE BID</u>					
1.	1	LS	Mobilization costs, including payment bond, performance bond, insurance, moving equipment to project, and project sign all in accordance with plans and specifications; NOT TO EXCEED 3% OF TOTAL PROJECT BID for,		
			DOLLARS		
			CENTS	\$	\$
			Lump Sum		
2.	5142	SY	Pulverize Existing Pavement (6" deep): furnish all labor, material and equipment to rework the existing asphalt parking surface area to a maximum depth of 6" by scarifying, pulverizing, mixing, compacting, proof rolling, sprinkling, reshaping, all in accordance with plans and specifications for,		
			DOLLARS		
			CENTS	\$	\$
			Per Square Yard		
3.	5142	SY	6" Base: Furnish all labor, materials and equipment to install 6" Limestone Base over a geogrid reinforcement interlayer, including placement, spreading, compaction and testing, and edge shaping, all in strict accordance with the plans and specifications for,		
			DOLLARS		
			CENTS	\$	\$
			Per Square Yard		

4.	5142	SY	Asphalt Surfacing: furnish all labor, materials, and equipment to install 2" Type "D" asphaltic concrete per TxDOT Item 340 matching existing pavement transitions, turnout for entrances, compacting, prime coat, and edge treatment, all in strict accordance with the plans and specifications for,		
				DOLLARS	
				CENTS	\$
			Per Square Yard		\$
5.	376	SY	12" Base for South Parking Extension: Furnish all labor, materials and equipment to remove organics, install 12" Limestone Base over a geogrid reinforcement interlayer, including placement, spreading, compaction and testing, and edge shaping, all in strict accordance with the plans and specifications for,		
				DOLLARS	
				CENTS	\$
			Per Square Yard		\$
6.	376	SY	Asphalt Surfacing for South Parking Lot Extension: furnish all labor, materials, and equipment to install 2" Type "D" asphaltic concrete per TxDOT Item 340 matching existing pavement transitions, turnout for entrances, installed monolithically with the rest of the parking lot, compacting, prime coat, and edge treatment, all in strict accordance with the plans and specifications for,		
				DOLLARS	
				CENTS	\$
			Per Square Yard		\$

7.	1	LS	Pavement Surface Preparation for Markings , including all labor and equipment all in strict accordance with the plans and specifications for,		
			DOLLARS		
			CENTS	\$	\$
			Lump Sum		
8.	<u>1550</u>	LF	4" Pavement Markings - Striping: furnish all labor, material and equipment to furnish and install parking stall markings, all in accordance with plans and specifications for,		
			DOLLARS		
			CENTS	\$	\$
			Per Linear Foot		
9.	<u>9</u>	LF	Traffic Direction Pavement Marking Arrows: furnish all labor, material and equipment to furnish and install travel direction arrows, all in accordance with plans and specifications for,		
			DOLLARS		
			CENTS	\$	\$
10.	1	LS	Handicap Pavement Markings & Signs: furnish all labor, material and equipment to furnish and install parking stall markings and signs, all in accordance with plans and specifications for,		
			DOLLARS		
			CENTS	\$	\$
			Lump Sum		
11.	2140	SF	4" Pavement Markings - No Parking Areas: furnish all labor, material and equipment to furnish and install parking stall markings , all in accordance with plans and specifications for,		
			DOLLARS		
			CENTS	\$	\$
			Per Square Foot		

12.	1	LS	Conduit: furnish all labor, materials, and equipment to install new conduit in accordance with Entergy requirements, including excavation, backfill, and compaction, all in strict accordance with the plans and specifications for,		
				DOLLARS	
				CENTS	\$
			Lump Sum		\$
13.	1	LS	Final Site Grading and Seeding: furnish all labor, material and equipment to provide final stie grading and seeding, reshaping existing drain, replacement of existing culvert with 15" RCP, including all excavation, compaction, backfill, seeding, and watering all in accordance with plans and specifications for,		
				DOLLARS	
				CENTS	\$
			Lump Sum		\$
14.	1	LS	SWPPP Plan: provide a storm water pollution plan, including all notices, and fees all in accordance with plans and specifications for,		
				DOLLARS	
				CENTS	\$
			Lump Sum		\$
15.	1	LS	Erosion Control Measures: provide silt fence, construction entrance, concrete washout area, and rock filter berms, including all labor and equipment, installation, maintenance, and removal, all in accordance with plans and specifications for,		
				DOLLARS	
				CENTS	\$
			Lump Sum		\$

ADDITIVE BID 1

16. 500

SY

12" Base for West Parking Extension:

Furnish all labor, materials and equipment to remove organics, install 12" Limestone Base over a geogrid reinforcement interlayer, including placement, spreading, compaction and testing, and edge shaping, all in strict accordance with the plans and specifications for,

DOLLARS

CENTS

\$

\$

Per Square Yard

17.

500

SY

Asphalt Surfacing for West Parking

Lot Extension: furnish all labor, materials, and equipment to install 2" Type "D" asphaltic concrete per TxDOT Item 340 matching existing pavement transitions, installed monolithically with the rest of the parking lot, compacting, prime coat, and edge treatment, all in strict accordance with the plans and specifications for,

DOLLARS

CENTS

\$

\$

Per Square Yard

18.

1

LS

Pavement Surface Preparation for

Markings, including all labor and equipment all in strict accordance with the plans and specifications for,

DOLLARS

CENTS

\$

\$

Lump Sum

19.

266

LF

4" Pavement Markings - Striping:

furnish all labor, material and equipment to furnish and install parking stall markings , all in accordance with plans and specifications for,

DOLLARS

CENTS

\$

\$

Per Linear Foot

ADDITIVE BID 2

20.	1	LS	Proposed Concrete Sidewalks to Picnic Tables and Pavilion: furnish all labor, material and equipment to furnish and install proposed concrete sidewalks, including removal of existing bollards, surface preparation, all in accordance with plans and specifications for,		
			DOLLARS		
			CENTS	\$	\$
			Lump Sum		
21.	3	EA	Add topping concrete slab to existing Covered Picnic Tables: furnish all labor, materials, and equipment to install 4" additional concrete slab at covered picnic tables, all in strict accordance with the plans and specifications for,		
			DOLLARS		
			CENTS	\$	\$
			Per Each		
22.	1	LS	Add topping concrete slab to existing Covered Pavilion Area: furnish all labor, materials, and equipment to install 4" thick additional concrete slab at covered pavillion, all in strict accordance with the plans and specifications for,		
			DOLLARS		
			CENTS	\$	\$
			Lump Sum		

ADDITIVE BID 3

23.	1	EA	Proposed Floating Kayak Launch: furnish all labor, material and equipment to furnish and install Floating Kayak Launch, all in accordance with plans and specifications for,		
			DOLLARS		
			CENTS	\$	\$
			Per Each		

ADDITIVE BID 4

24. 1

LS

Rehabilitate Existing Boardwalk: furnish all labor, material and equipment to remove and replace existing lumber and composite decking material with new material, complete in place, all in accordance with plans and specifications for,

DOLLARS

CENTS

\$

\$

Lump Sum**ADDITIVE BID 5**

25. 1

LS

Extend Existing Boardwalk: furnish all labor, materials, and equipment to install driven timber piles, treated timber bracing and supports, and composite decking material, transition from existing boardwalk, complete in place, all in strict accordance with the plans and specifications for,

DOLLARS

CENTS

\$

\$

Lump Sum

B. Bidder acknowledges that:

1. each Bid Unit Price includes an amount considered by Bidder to be adequate to cover Contractor's overhead and profit for each separately identified item, and
2. estimated quantities are not guaranteed, and are solely for the purpose of comparison of Bids, and final payment for all Unit Price Work will be based on actual quantities, determined as provided in the Contract Documents.

ARTICLE 4—TIME OF COMPLETION

- 4.01 Bidder agrees that the Work will be substantially complete and will be completed and ready for final payment in accordance with Paragraph 15.06 of the General Conditions on or before the dates or within the number of calendar days indicated in the Agreement.
- 4.02 Bidder agrees that the Work will be substantially complete as indicated in the Agreement, and will be completed and ready for final payment in accordance with Paragraph 15.06 of the General Conditions.
- 4.03 Bidder agrees that the Work will be substantially complete within the time stipulated in the Agreement and as provided in Paragraph 4.01 of the General Conditions, and will be completed and ready for final payment in accordance with Paragraph 15.06 of the General Conditions.
- 4.04 Bidder accepts the provisions of the Agreement as to liquidated damages.

ARTICLE 5—BIDDER'S ACKNOWLEDGEMENTS: ACCEPTANCE PERIOD, INSTRUCTIONS, AND RECEIPT OF ADDENDA

5.01 *Bid Acceptance Period*

- A. This Bid will remain subject to acceptance for 60 days after the Bid opening, or for such longer period of time that Bidder may agree to in writing upon request of Owner.

5.02 *Instructions to Bidders*

- A. Bidder accepts all of the terms and conditions of the Instructions to Bidders, including without limitation those dealing with the disposition of Bid security.

5.03 *Receipt of Addenda*

- A. Bidder hereby acknowledges receipt of the following Addenda:

Addendum Number	Addendum Date	Received

ARTICLE 6—BIDDER'S REPRESENTATIONS AND CERTIFICATIONS

6.01 *Bidder's Representations*

- A. In submitting this Bid, Bidder represents the following:

1. Bidder has examined and carefully studied the Bidding Documents, including Addenda.
2. Bidder has visited the Site, conducted a thorough visual examination of the Site and adjacent areas, and become familiar with the general, local, and Site conditions that may affect cost, progress, and performance of the Work.
3. Bidder is familiar with all Laws and Regulations that may affect cost, progress, and performance of the Work.
4. Bidder has carefully studied the reports of explorations and tests of subsurface conditions at or adjacent to the Site and the drawings of physical conditions relating to existing surface or subsurface structures at the Site that have been identified in the Supplementary Conditions, with respect to the Technical Data in such reports and drawings.
5. Bidder has carefully studied the reports and drawings relating to Hazardous Environmental Conditions, if any, at or adjacent to the Site that have been identified in the Supplementary Conditions, with respect to Technical Data in such reports and drawings.
6. Bidder has considered the information known to Bidder itself; information commonly known to contractors doing business in the locality of the Site; information and observations obtained from visits to the Site; the Bidding Documents; and the Technical Data identified in the Supplementary Conditions or by definition, with respect to the effect of such information, observations, and Technical Data on (a) the cost, progress, and performance of the Work; (b) the means, methods, techniques, sequences, and procedures of construction to be employed by Bidder, if selected as Contractor; and (c) Bidder's (Contractor's) safety precautions and programs.
7. Based on the information and observations referred to in the preceding paragraph, Bidder agrees that no further examinations, investigations, explorations, tests, studies, or data are necessary for the performance of the Work at the Contract Price, within the Contract Times, and in accordance with the other terms and conditions of the Contract.
8. Bidder is aware of the general nature of work to be performed by Owner and others at the Site that relates to the Work as indicated in the Bidding Documents.
9. Bidder has given Engineer written notice of all conflicts, errors, ambiguities, or discrepancies that Bidder has discovered in the Bidding Documents, and of discrepancies between Site conditions and the Contract Documents, and the written resolution thereof by Engineer is acceptable to Contractor.
10. The Bidding Documents are generally sufficient to indicate and convey understanding of all terms and conditions for performance and furnishing of the Work.
11. The submission of this Bid constitutes an incontrovertible representation by Bidder that without exception the Bid and all prices in the Bid are premised upon performing and furnishing the Work required by the Bidding Documents.

6.02 *Bidder's Certifications*

- A. The Bidder certifies the following:

1. This Bid is genuine and not made in the interest of or on behalf of any undisclosed individual or entity and is not submitted in conformity with any collusive agreement or rules of any group, association, organization, or corporation.
2. Bidder has not directly or indirectly induced or solicited any other Bidder to submit a false or sham Bid.
3. Bidder has not solicited or induced any individual or entity to refrain from bidding.
4. Bidder has not engaged in corrupt, fraudulent, collusive, or coercive practices in competing for the Contract. For the purposes of this Paragraph 8.02.A:
 - a. Corrupt practice means the offering, giving, receiving, or soliciting of anything of value likely to influence the action of a public official in the bidding process.
 - b. Fraudulent practice means an intentional misrepresentation of facts made (a) to influence the bidding process to the detriment of Owner, (b) to establish bid prices at artificial non-competitive levels, or (c) to deprive Owner of the benefits of free and open competition.
 - c. Collusive practice means a scheme or arrangement between two or more Bidders, with or without the knowledge of Owner, a purpose of which is to establish bid prices at artificial, non-competitive levels.
 - d. Coercive practice means harming or threatening to harm, directly or indirectly, persons or their property to influence their participation in the bidding process or affect the execution of the Contract.

BIDDER hereby submits this Bid as set forth above:

Bidder:

(typed or printed name of organization)

By:

(individual's signature)

Name:

(typed or printed)

Title:

(typed or printed)

Date:

(typed or printed)

If Bidder is a corporation, a partnership, or a joint venture, attach evidence of authority to sign.

Attest:

(individual's signature)

Name:

(typed or printed)

Title:

(typed or printed)

Date:

(typed or printed)

Address for giving notices:

Bidder's Contact:

Name:

(typed or printed)

Title:

(typed or printed)

Phone:

Email:

Address:

Bidder's Contractor License No.: (if applicable)

BID OPENING

In the space provided below, enter your total Base Bid amount for this project. Only this figure will be read publicly at the public bid opening.

It is understood and agreed by the bidder in signing the proposal that the total bid amount entered below is not binding on either the bidder or the Owner. It is further agreed that the official total bid amount for this proposal will be determined by multiplying the unit prices for each unit price pay item by the respective estimated quantities shown in this proposal, and then totaling all of the extended amounts plus the amounts bid for all lump sum items.

Project: Sabine River Authority Bluebird Recreation Area Improvements

Owner: Sabine River Authority of Texas

Orange County, Texas

\$ _____
Base Bid (Items 1-15)

\$ _____
Additive Bid 1 (Items 16-19)

\$ _____
Additive Bid 2 (Items 20-22)

\$ _____
Additive Bid 3 (Item 23)

\$ _____
Additive Bid 4 (Item 24)

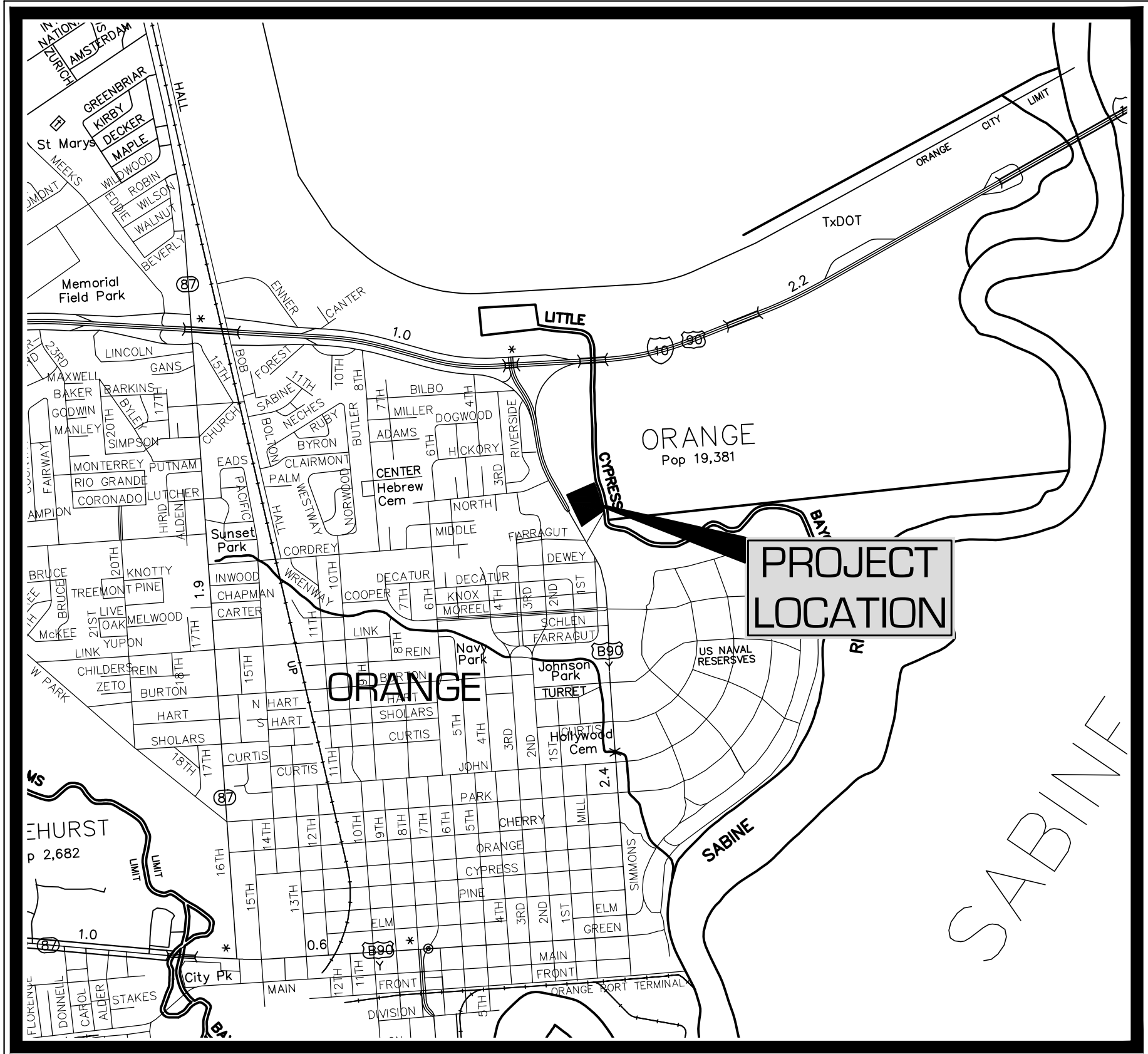
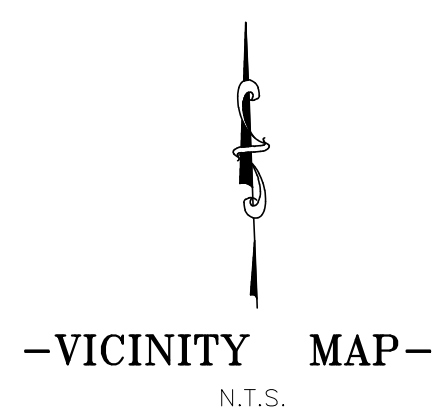
\$ _____
Additive Bid 5 (Item 25)

PRE-BID METTING SIGN IN SHEET – SABINE RIVER AUTHORITY OF TEXAS
RFB #22-1208 GCD
GULF COAST DIVISION BLUE BIRD'S REHABILITATION PROJECT
WEDNESDAY, JUNE 22, 2022

NAME	COMPANY NAME	PHONE #	E-MAIL
1. David Dudson	Talumpy-Woody Engr	(307) 546-8736	duhong@twinc.com
2. Cody Ellis	Elite Contracting & Equipment	(409) 594-1825	cody@elite-eg.com
3. Brenda Baker	Hartman BLDG.	409-659-8225	bbaker@hbs.net
4. Marlene Jettler	G&G Enterprises Construction Corp	409 993 5465	gine@enterpriseinc.com
5. Steve Jordan	Schramm & Wolfe, Inc.	409-866-0341	sjordan@spray.com
6.			
7.			
8.			
9.			
10.			
11.			
12.			
13.			
14.			
15.			
16. David Williams	SRA-TX	409-746-2112	dwilliams@sra-tx.org
17. Mark Mann	SRA-TX	409-769-2192	mmann@sra-tx.org

CONSTRUCTION PLANS
FOR
SABINE RIVER AUTHORITY OF TEXAS
BLUEBIRD RECREATION AREA IMPROVEMENTS
ORANGE COUNTY, TEXAS

JUNE 2022



- BOARD MEMBERS
- | | |
|--------------------------|-----------------------|
| THOMAS "TOM" BEALL | PRESIDENT |
| JANIE VALENTA | VICE PRESIDENT |
| JEFFERY D. "JEFF" JACOBS | SECRETARY – TREASURER |
| JOSHUA A. "JOSH" McADAMS | SECRETARY PRO-TEM |
| KEVIN M. WILLIAMS | BOARD MEMBER |
| CLIFF TODD | BOARD MEMBER |
| JEANETTE STERNER | BOARD MEMBER |
| ELTON BROCK | BOARD MEMBER |
| DARRIN R. RUDOLPH | BOARD MEMBER |
| DAVID MONTAGNE | GENERAL MANAGER |



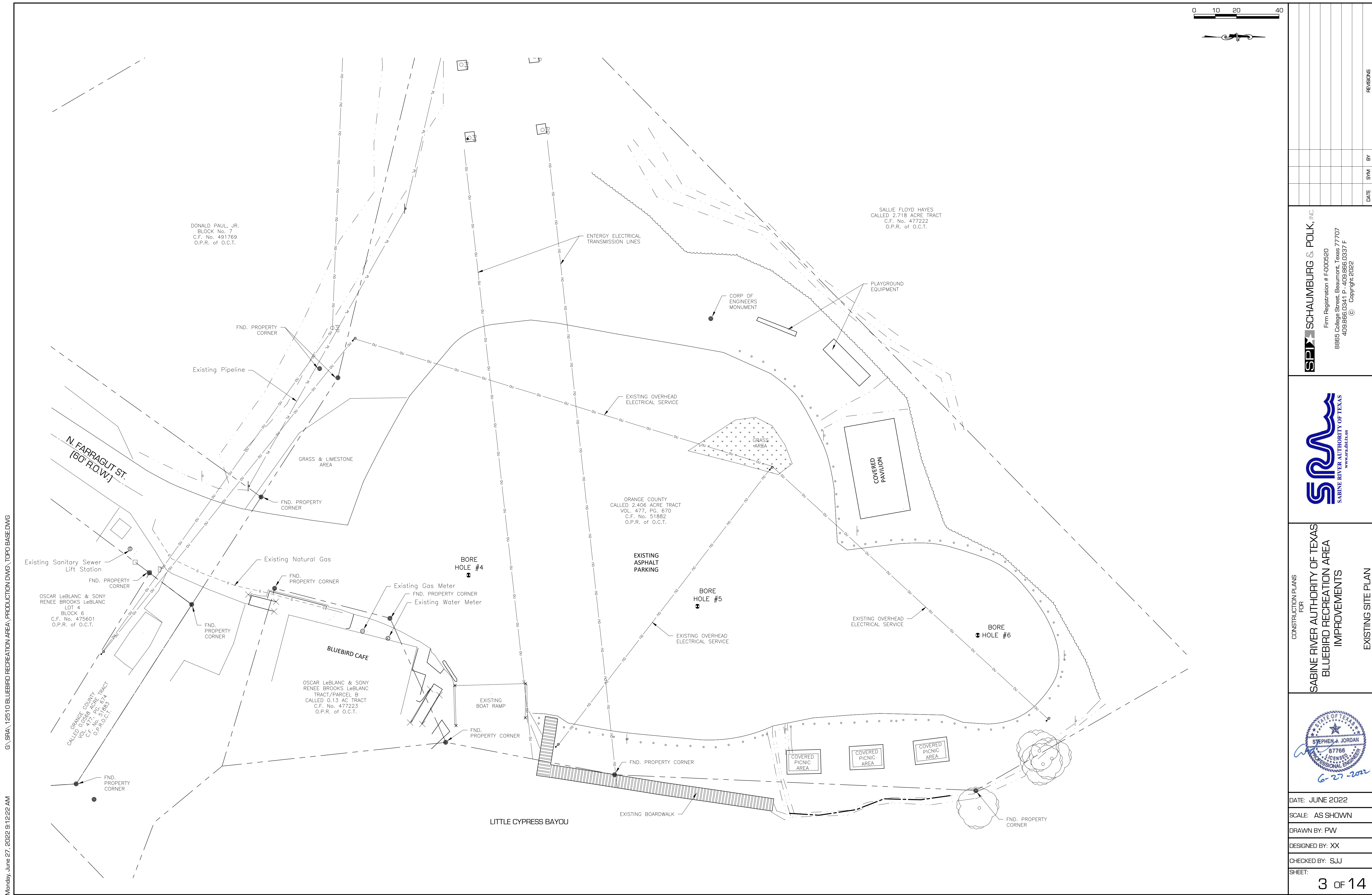
STEPHEN J. JORDAN, P.E.
LICENSED PROFESSIONAL ENGINEER No. 87766

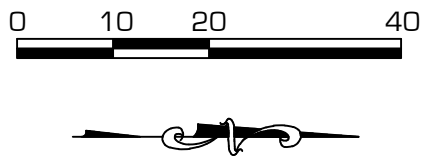
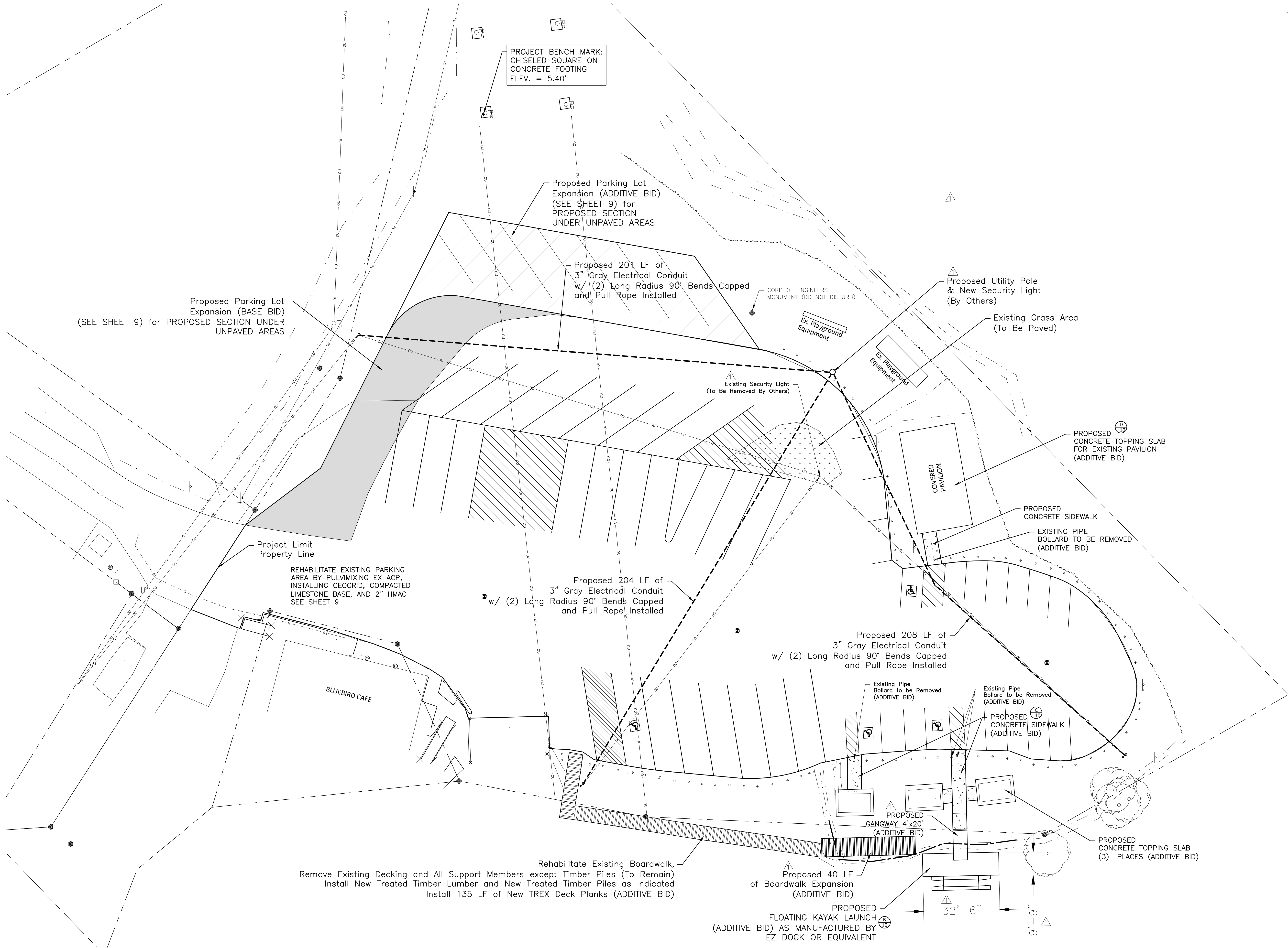
PREPARED BY:
SPI SCHAUMBURG & POLK, INC.
Firm Registration # F-000520
8965 College Street, Beaumont, Texas 77707
409.866.0341 P - 409.866.0337 F
© Copyright 2022



SHEET	DRAWING NAME
1	COVER SHEET/INDEX
2	LEGEND & GENERAL NOTES
3	EXISTING SITE PLAN
4	PROPOSED SITE PLAN
5	PROPOSED STRIPING PLAN
6	PROPOSED DIMENSION PLAN
7	PROPOSED GRADING PLAN
8-9	PROPOSED CROSS SECTIONS
10	PROPOSED SIDEWALK & TOPPING SLABS
11	PROPOSED BOARDWALK & DETAILS
12	PROPOSED BOARDWALK & DETAILS
13	STORM WATER POLLUTION PREVENTION PLAN
14	SWPPP DETAILS

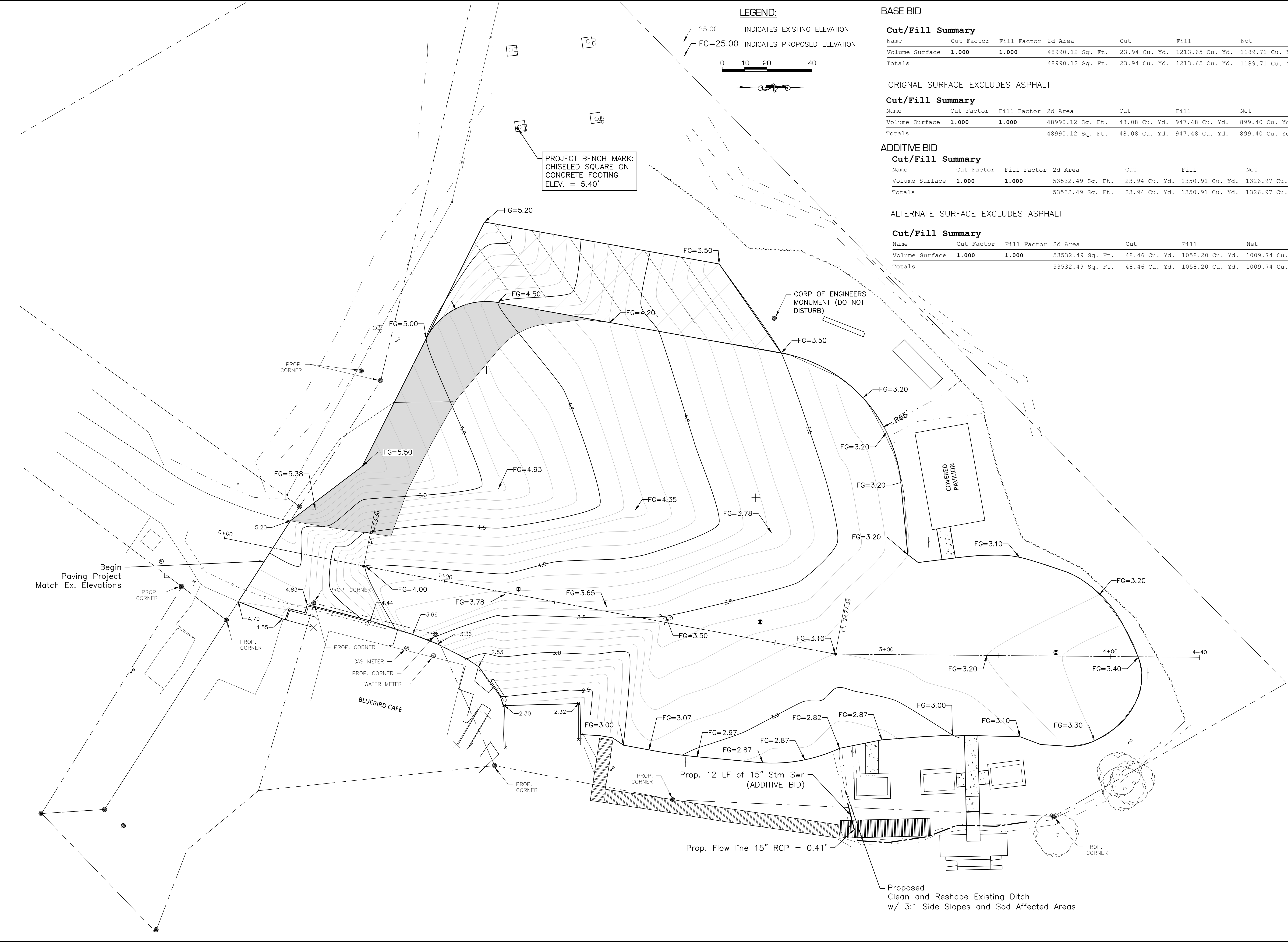
DATE	SYM	BY	REVISIONS
6/22	△	PW	REVISED PER SRA COMMENT ADD. No. 1
2/22		PW	REVISED PER SABINE RIVER AUTHORITY COMMENTS
1/22		PW	PER SABINE RIVER AUTHORITY COMMENTS





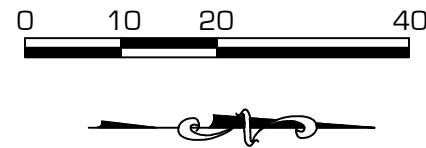
SABINE RIVER AUTHORITY OF TEXAS BLUEBIRD RECREATION AREA IMPROVEMENTS		SCHAUMBURG & POLK, INC. Firm Registration # F-000520 8865 College Street, Beaumont, Texas 77707 409.866.0341 P - 409.866.0337 F © Copyright 2022		REVISIONS	
DATE	6/22	BY	PW	REVISED PER SRA COMMENT	ADD. No. 1
<div>DATE: JUNE 2022</div> <div>SCALE: AS SHOWN</div> <div>DRAWN BY: PW</div> <div>DESIGNED BY: XX</div> <div>CHECKED BY: SJJ</div> <div>SHEET: 4 OF 14</div>					





LEGEND:

25.00 INDICATES EXISTING ELEVATION
FG=25.00 INDICATES PROPOSED ELEVATION



PROJECT BENCH MARK:
CHISELED SQUARE ON
CONCRETE FOOTING
ELEV. = 5.40'

BASE BID

Cut/Fill Summary

Name	Cut Factor	Fill Factor	2d Area	Cut	Fill	Net
Volume Surface	1.000	1.000	48990.12 Sq. Ft.	23.94 Cu. Yd.	1213.65 Cu. Yd.	1189.71 Cu. Yd.<Fill>
Totals			48990.12 Sq. Ft.	23.94 Cu. Yd.	1213.65 Cu. Yd.	1189.71 Cu. Yd.<Fill>

ORIGINAL SURFACE EXCLUDES ASPHALT

Cut/Fill Summary

Name	Cut Factor	Fill Factor	2d Area	Cut	Fill	Net
Volume Surface	1.000	1.000	48990.12 Sq. Ft.	48.08 Cu. Yd.	947.48 Cu. Yd.	899.40 Cu. Yd.<Fill>
Totals			48990.12 Sq. Ft.	48.08 Cu. Yd.	947.48 Cu. Yd.	899.40 Cu. Yd.<Fill>

ADDITIVE BID

Cut/Fill Summary

Name	Cut Factor	Fill Factor	2d Area	Cut	Fill	Net
Volume Surface	1.000	1.000	53532.49 Sq. Ft.	23.94 Cu. Yd.	1350.91 Cu. Yd.	1326.97 Cu. Yd.<Fill>
Totals			53532.49 Sq. Ft.	23.94 Cu. Yd.	1350.91 Cu. Yd.	1326.97 Cu. Yd.<Fill>

ALTERNATE SURFACE EXCLUDES ASPHALT

Cut/Fill Summary

Name	Cut Factor	Fill Factor	2d Area	Cut	Fill	Net
Volume Surface	1.000	1.000	53532.49 Sq. Ft.	48.46 Cu. Yd.	1058.20 Cu. Yd.	1009.74 Cu. Yd.<Fill>
Totals			53532.49 Sq. Ft.	48.46 Cu. Yd.	1058.20 Cu. Yd.	1009.74 Cu. Yd.<Fill>

SPI SCHAUMBURG & POLK, INC.

Firm Registration # F000520
8865 College Street, Beaumont, Texas 77707
409.866.0341 P. 409.866.0337 F
© Copyright 2022



CONSTRUCTION PLANS
FOR
SABINE RIVER AUTHORITY OF TEXAS
BLUEBIRD RECREATION AREA
IMPROVEMENTS

PROPOSED GRADING PLAN



DATE: JUNE 2022

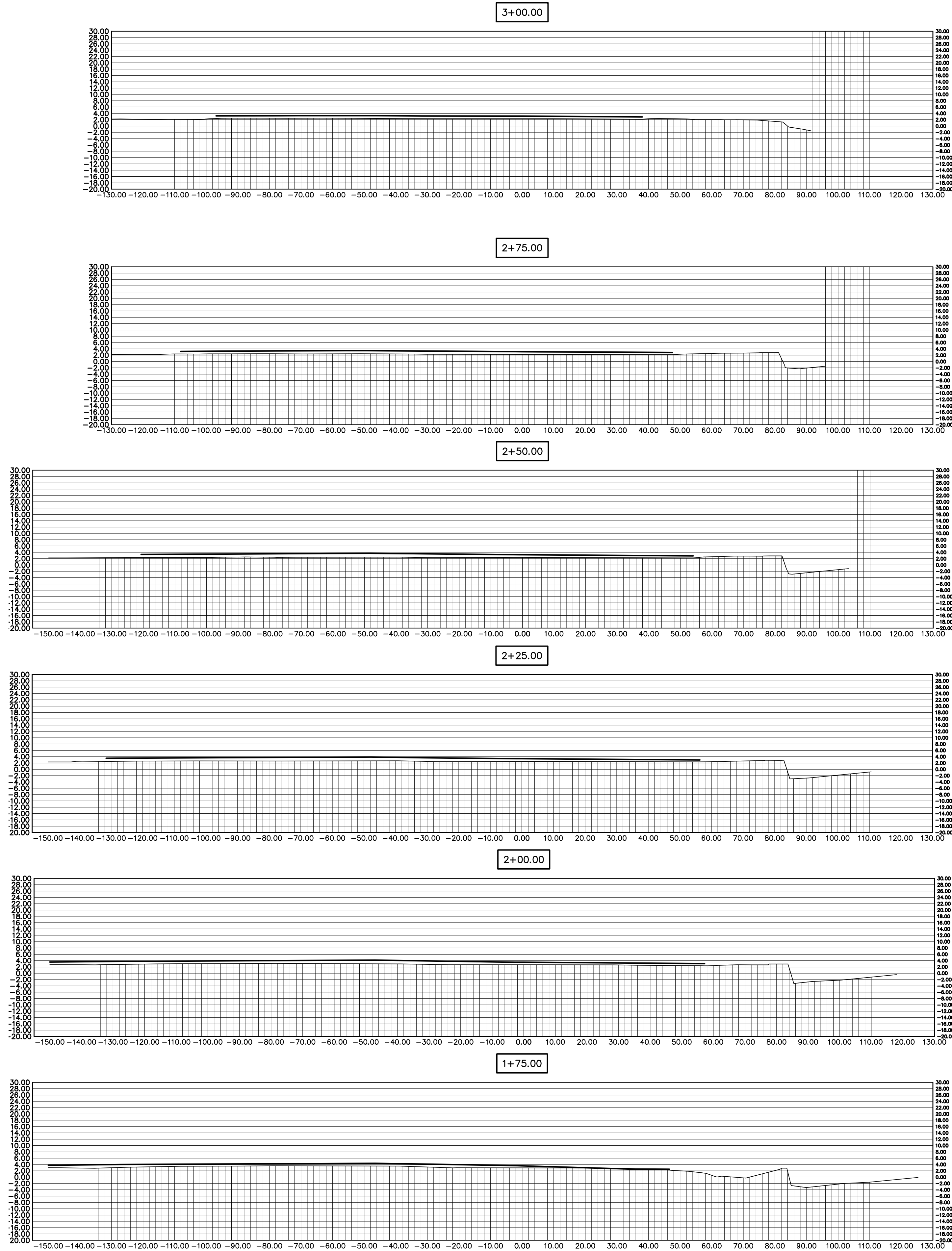
SCALE: AS SHOWN

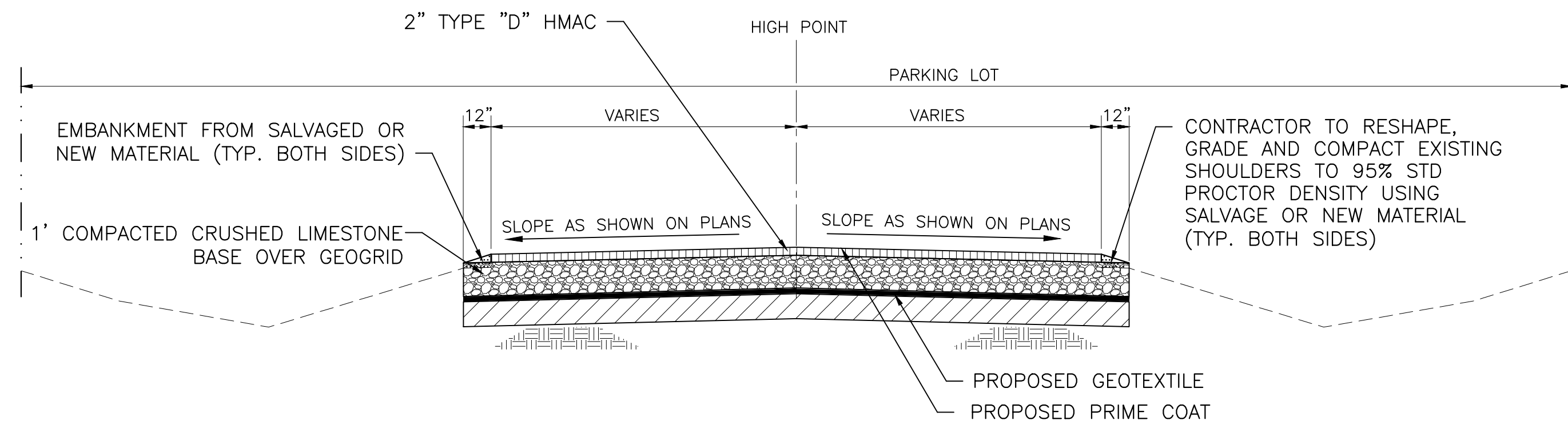
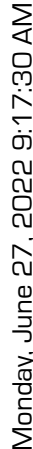
DRAWN BY: PVW

DESIGNED BY: XX

CHECKED BY: SJJ

SHEET:




[illegible]

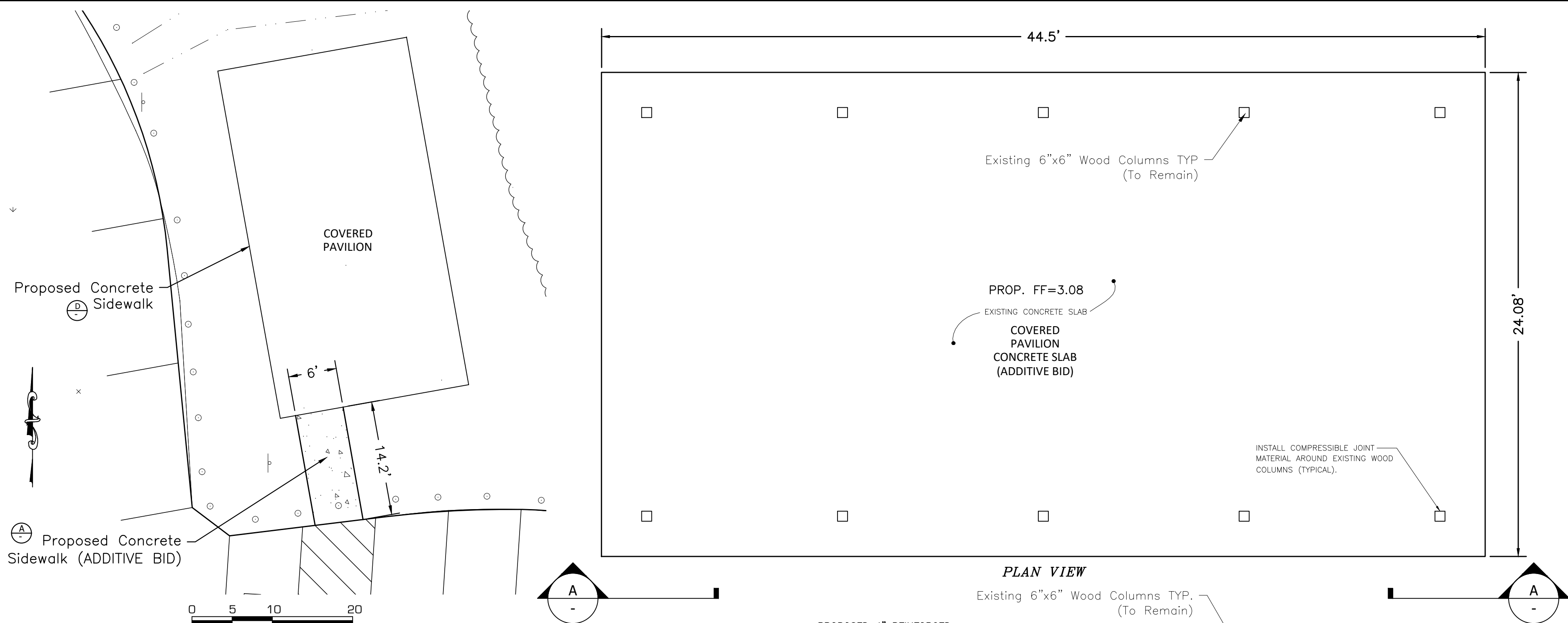


Unpaved areas designated for new pavement construction should be stripped to remove organics, vegetation or other deleterious materials prior to installing 1 foot of compacted crushed limestone base over geotextile.

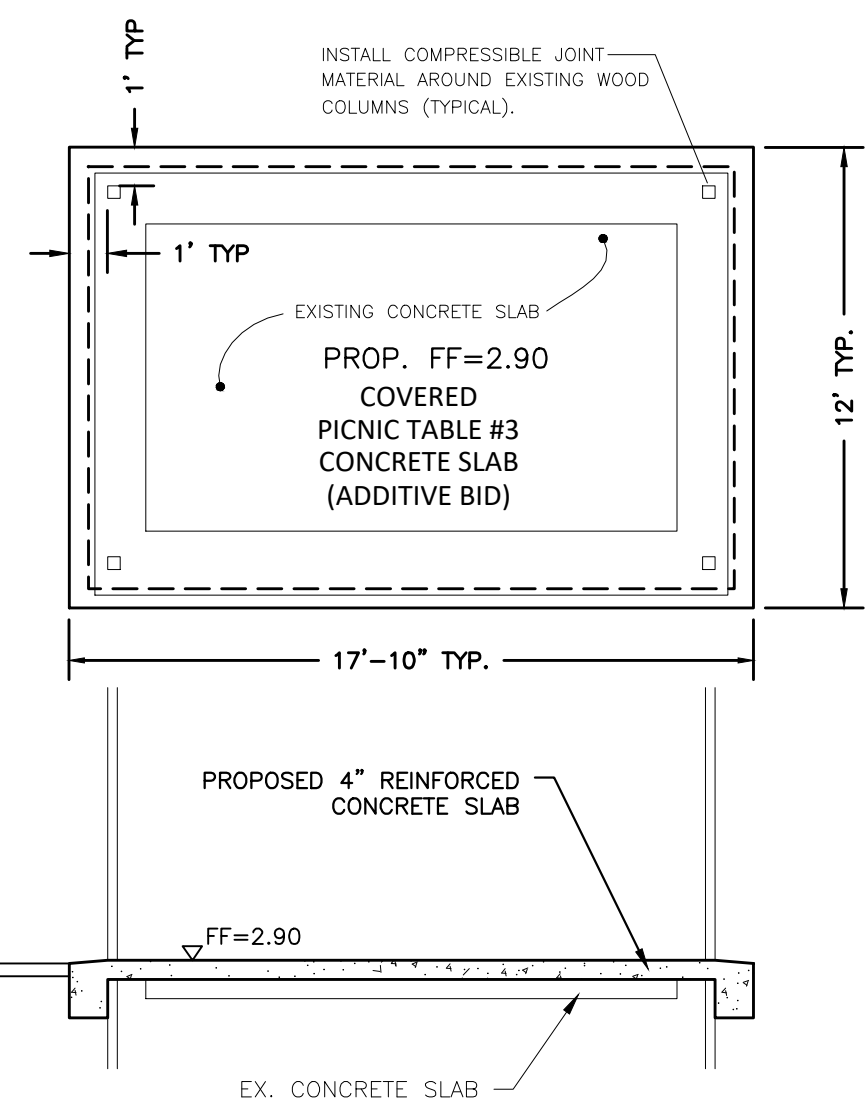
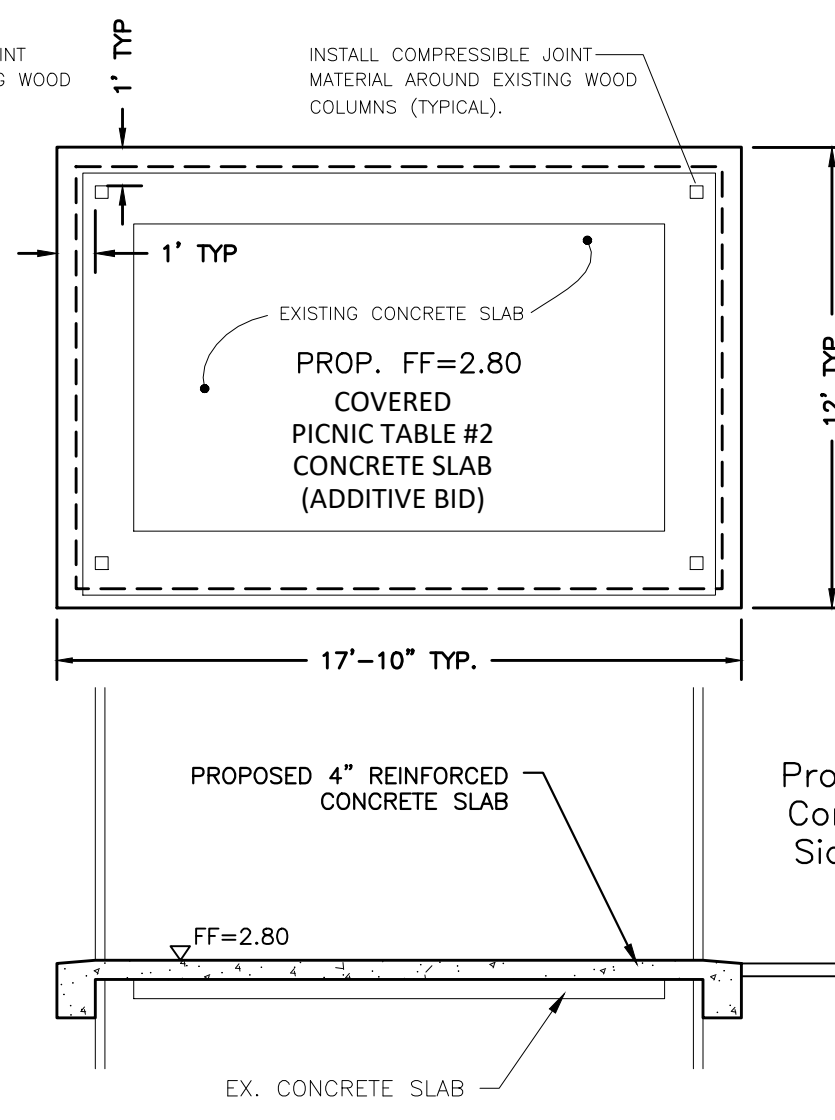
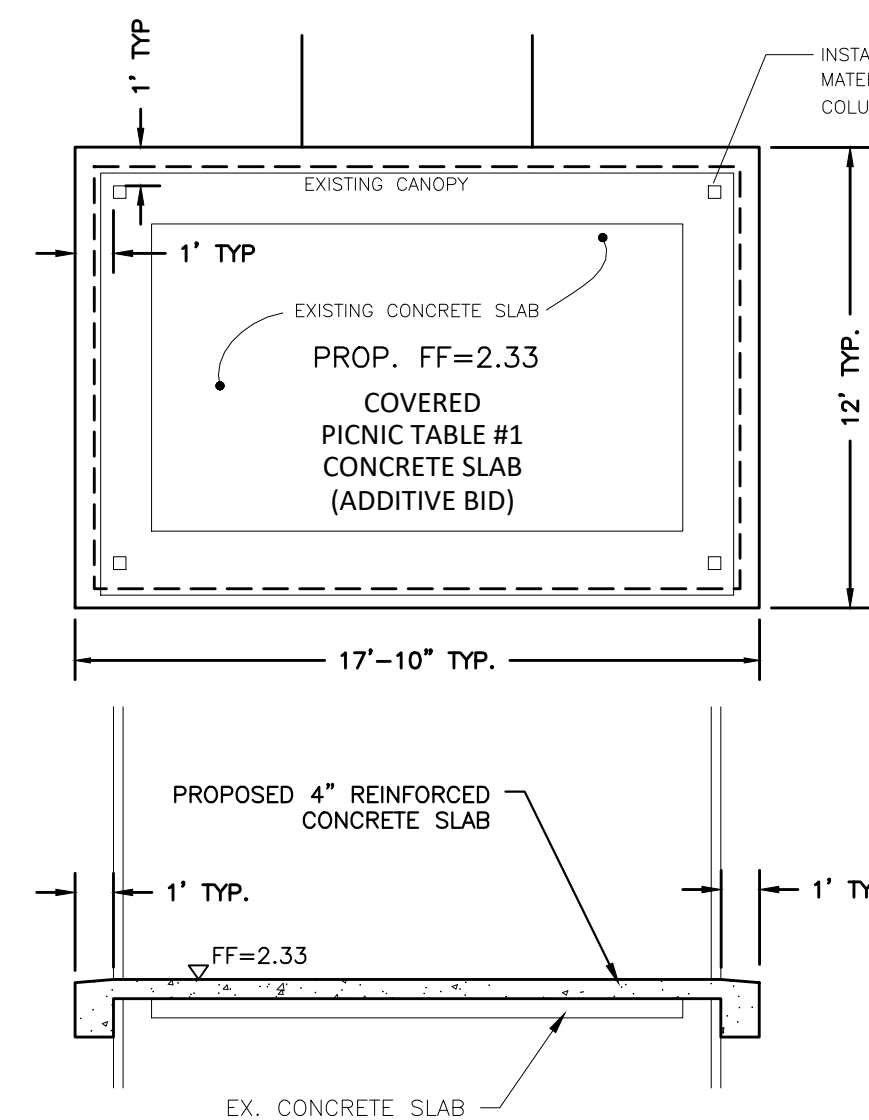
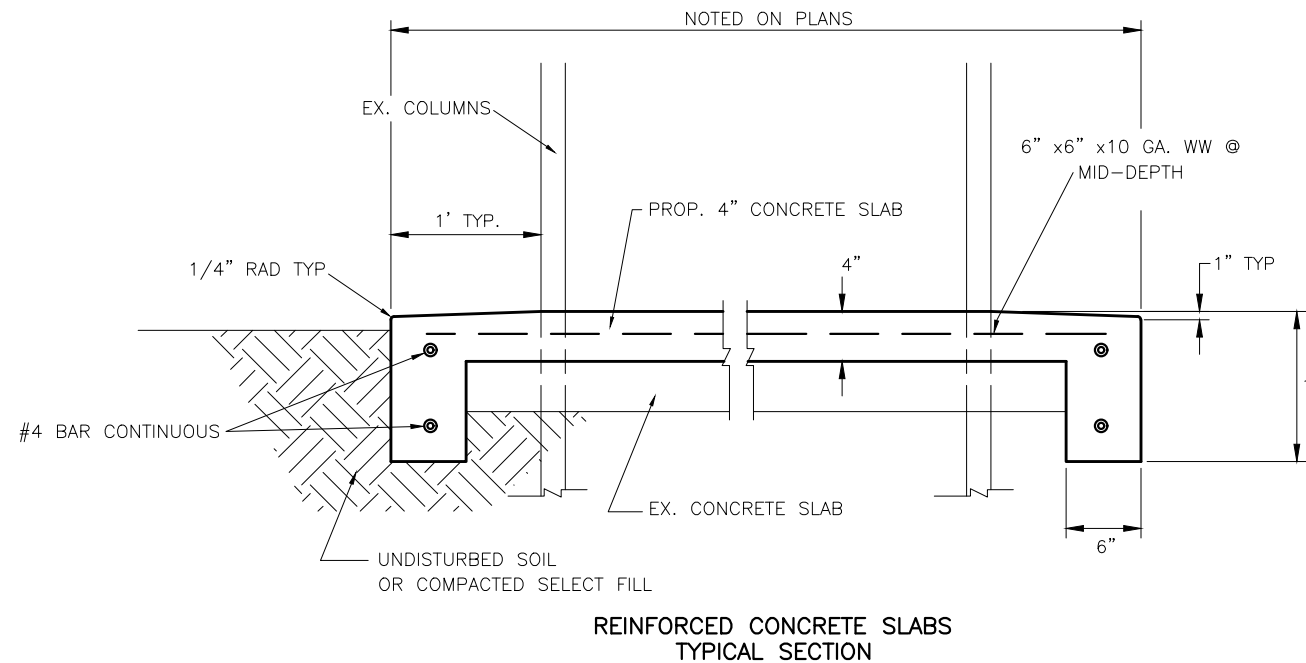
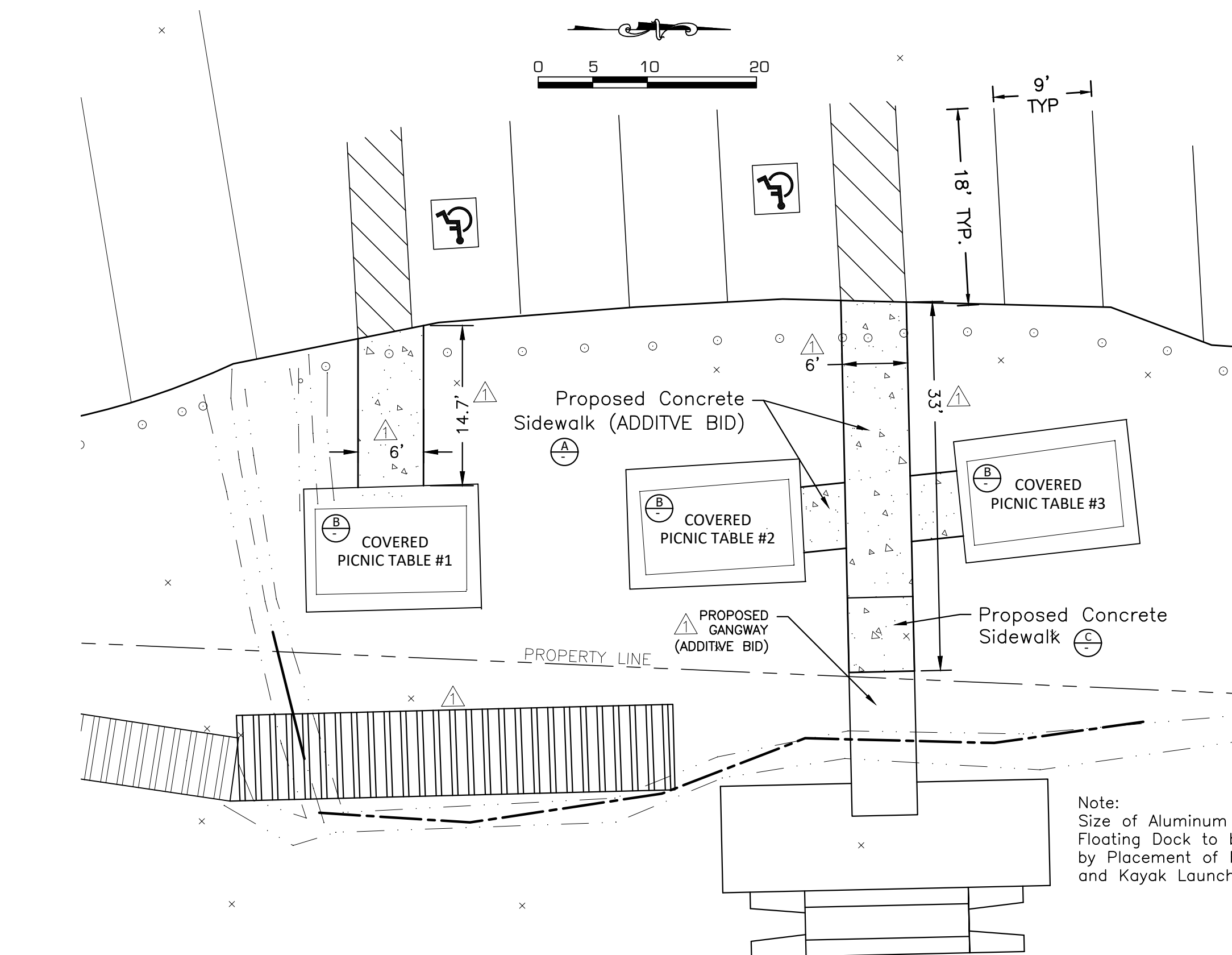
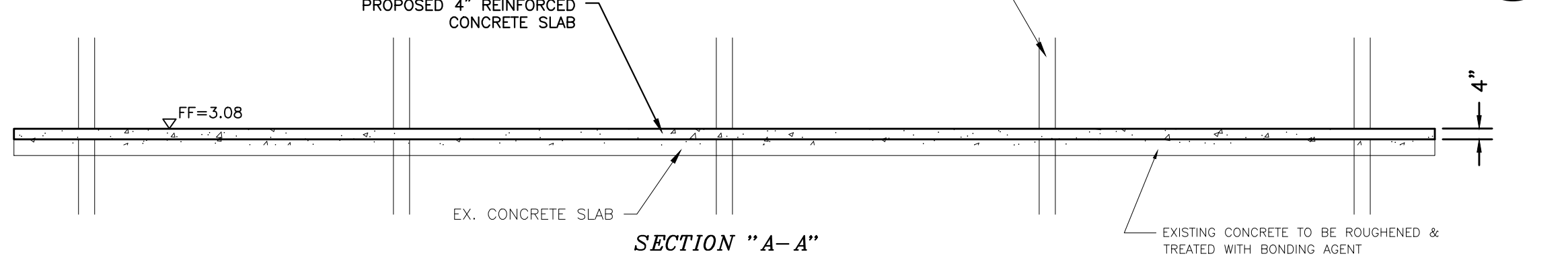
NOTE:
CONTRACTOR TO RESHAPE PAVED AREAS PER PLANS

PROPOSED SECTION UNDER UNPAVED AREAS
N.T.S.

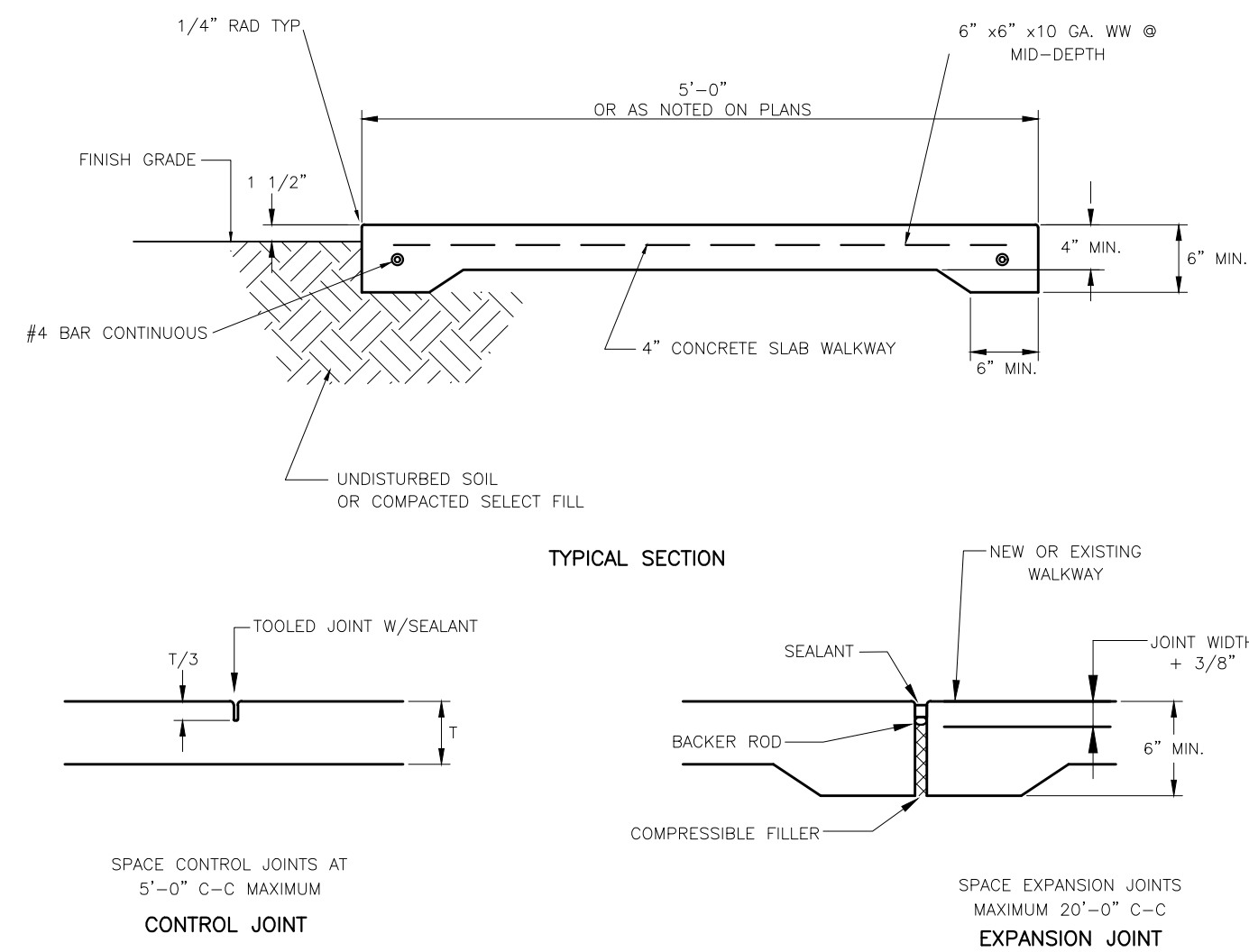
 SPI SCHAUMBURG & POLK, INC. Firm Registration # F000520 8865 College Street, Beaumont, Texas 77707 409.866.0341 P. 409.866.0337 F © Copyright 2022	 SABINE RIVER AUTHORITY OF TEXAS www.sra.state.tx.us				CONSTRUCTION PLANS FOR SABINE RIVER AUTHORITY OF TEXAS BLUEBIRD RECREATION AREA IMPROVEMENTS				 CROSS SECTIONS			
	DATE:	JUNE 2022			SCALE:	AS SHOWN			DRAWN BY:	PW		
	DESIGNED BY:	XX			CHECKED BY:	SJJ			SHEET:	9 OF 14		
	DATE				SYN				BY			
	REVISIONS											



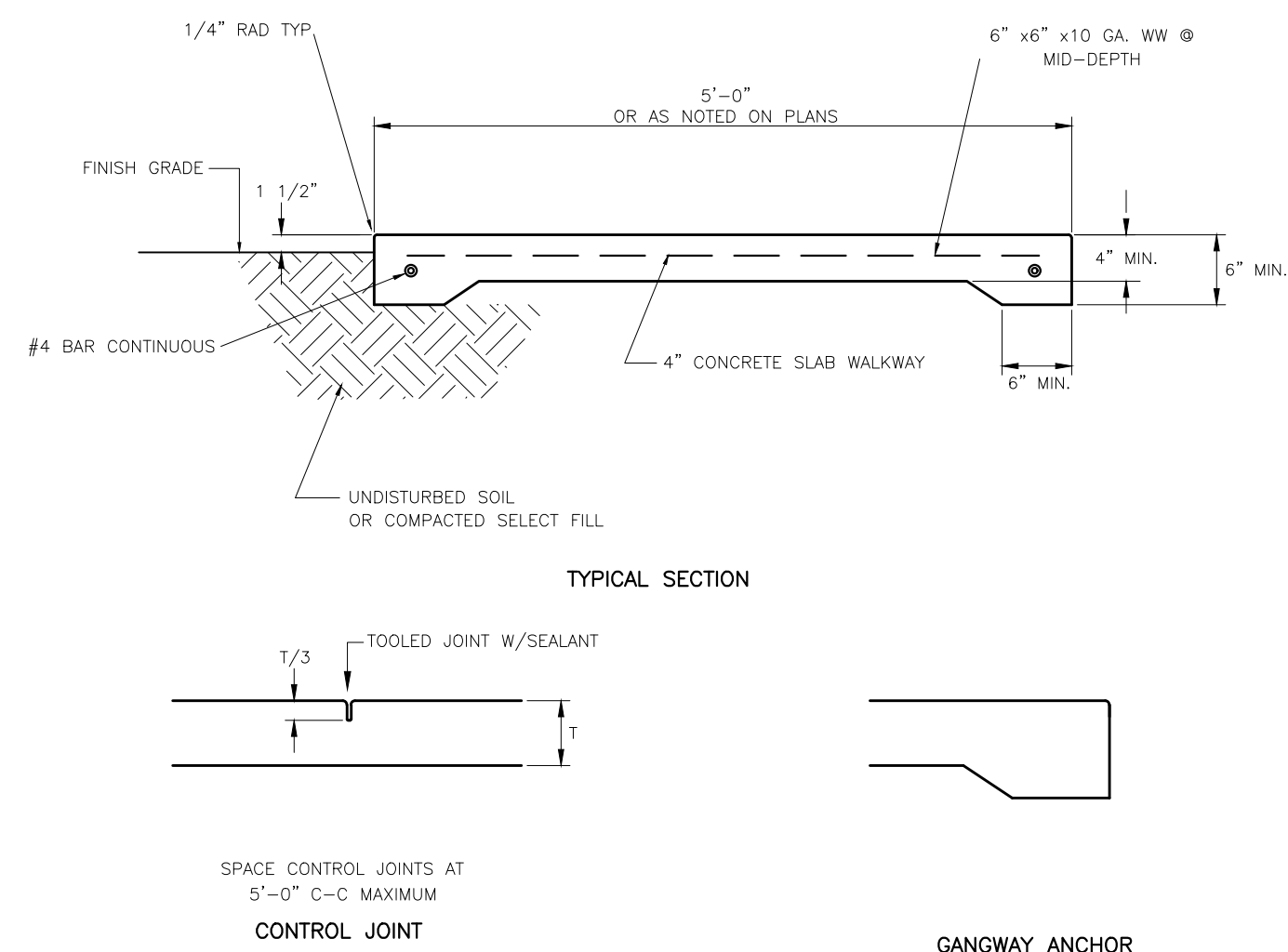
- NOTES FOR PICNIC & PAVILION CONCRETE SLABS:
1. ALL EXISTING CONCRETE SLABS ARE TO BE FREE OF DIRT AND GREASE PRIOR TO PLACEMENT OF PROPOSED CONCRETE.
 2. ALL TIMBER EMBEDDED IN THE EXISTING SLAB IS TO BE REMOVED, AND ALL VOIDS TO BE FILLED WITH CONCRETE PRIOR TO PLACEMENT OF PROPOSED CONCRETE SLABS.
 3. ALL EXISTING CONCRETE SLABS ARE TO BE TREATED WITH A CONCRETE BONDING AGENT.



B PROPOSED PICNIC TABLE SLABS



A TYPICAL SIDEWALK DETAILS

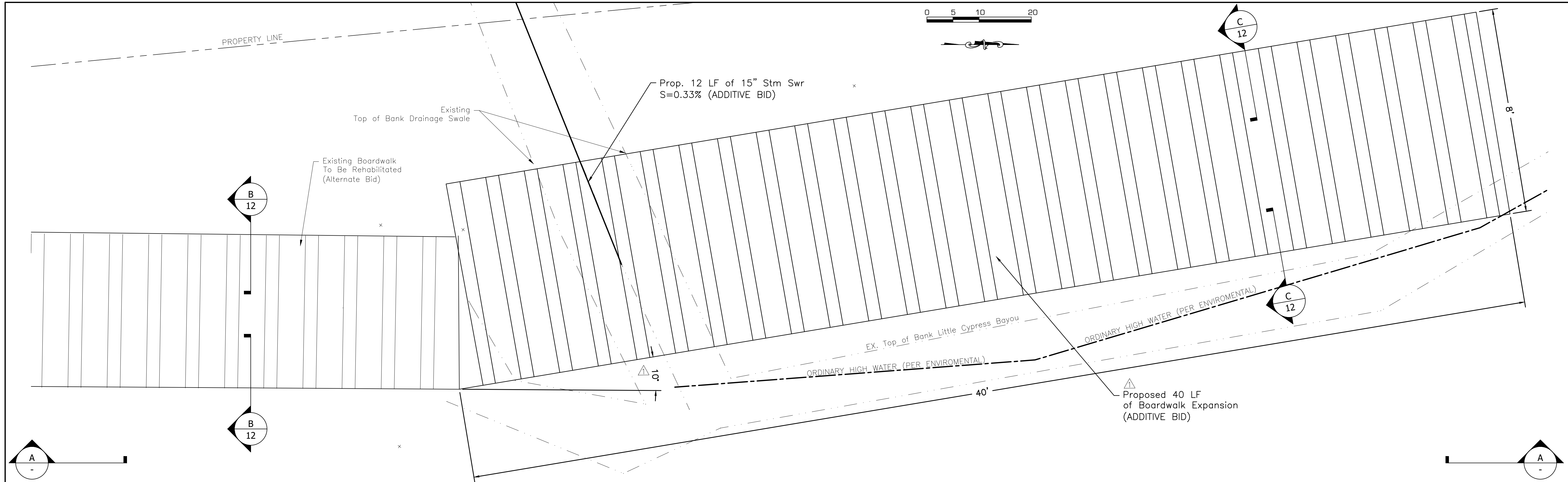


C GANGWAY CONCRETE SIDEWALK

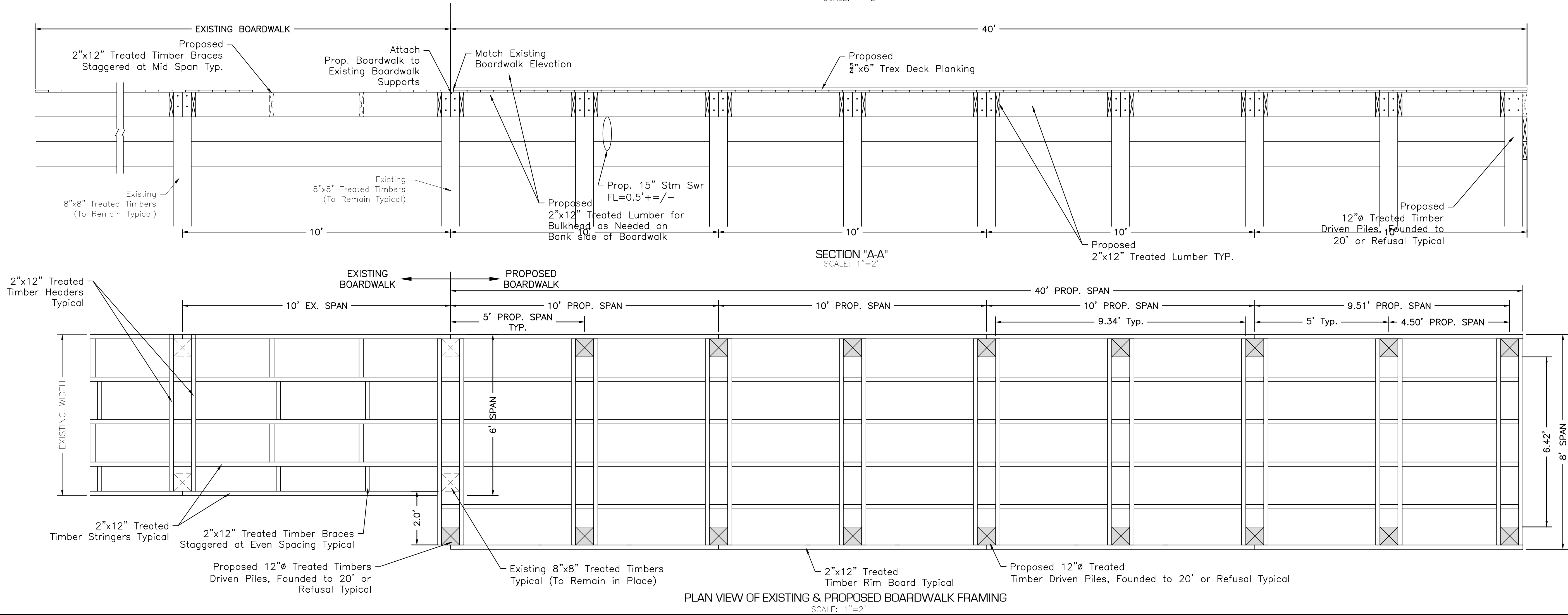
SCHAUMBURG & POLK, INC.		Firm Registration # F000520		8865 College Street, Beaumont, Texas 77707		409.866.0341 P. 409.866.0337 F		© Copyright 2022		REVISED PER SRA COMMENT ADD. No. 1	
SABINE RIVER AUTHORITY OF TEXAS		CONSTRUCTION PLANS FOR		SABINE RIVER AUTHORITY OF TEXAS		BLUEBIRD RECREATION AREA		IMPROVEMENTS		PROPOSED SIDEWALK PLAN	
DATE: JUNE 2022		SCALE: AS SHOWN		DRAWN BY: PW		DESIGNED BY: XX		CHECKED BY: SJJ		SHEET: 10 OF 14	

GS: SRA\12510 BLUEBIRD RECREATION AREA\PRODUCTION\DWG\TOPO BASE.DWG

Monday, June 27, 2022 9:21:49 AM



PROPOSED BOARDWALK
SCALE: 1"=2'



PLAN VIEW OF EXISTING & PROPOSED BOARDWALK FRAMING
SCALE: 1"=2'

SPS SCHAUMBURG & POLK, INC. Firm Registration # F000520 8865 College Street, Beaumont, Texas 77707 409.866.0341 P. 409.866.0337 F © Copyright 2022		REVISIONS	
DATE	BY	SYM	PW
6/22			
REVISED PER SRA COMMENT ADD. No. 1			

CONSTRUCTION PLANS FOR

SABINE RIVER AUTHORITY OF TEXAS
BLUEBIRD RECREATION AREA
IMPROVEMENTS

PROPOSED BOARDWALK & DETAILS

STATE OF TEXAS
STEPHEN A. JORDAN
87766
LICENSED PROFESSIONAL ENGINEER
6-27-2022

DATE: JUNE 2022

SCALE: AS SHOWN

DRAWN BY: PW

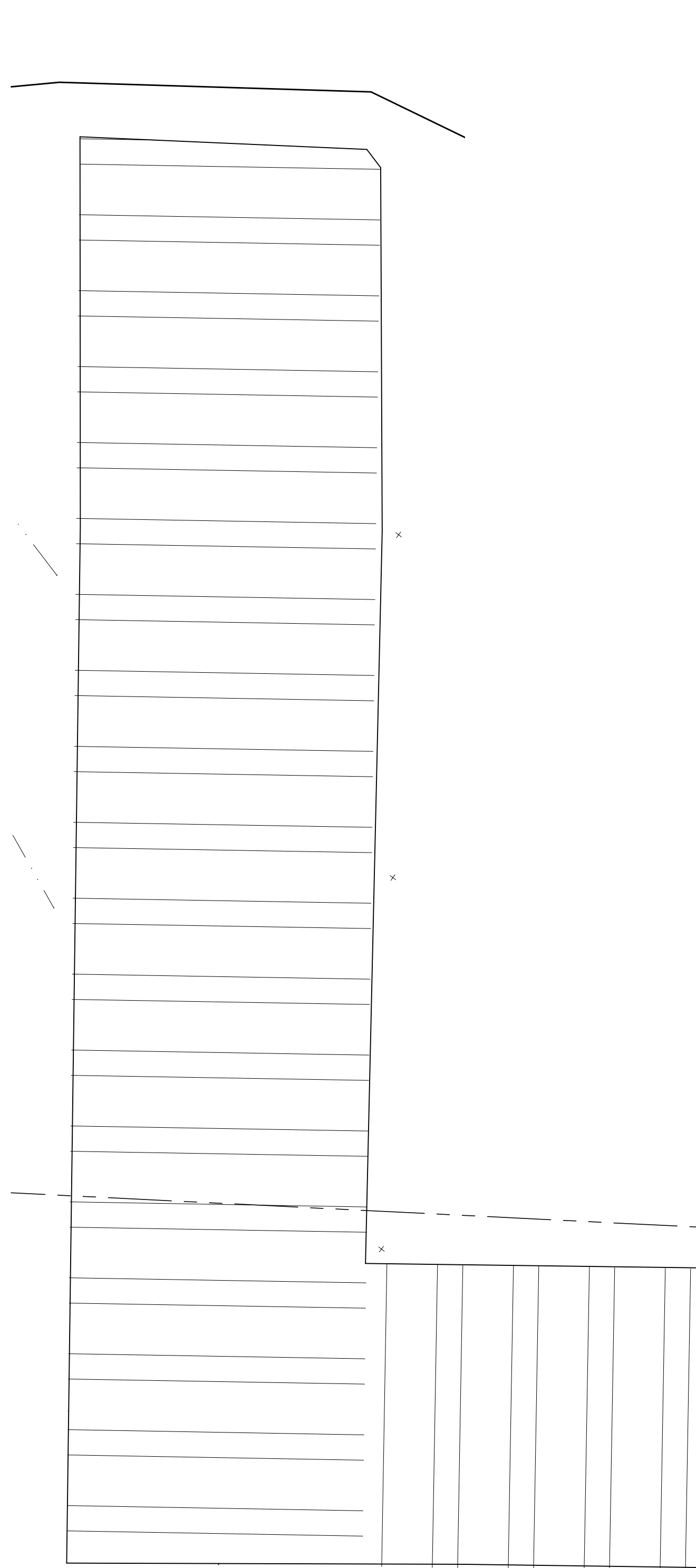
DESIGNED BY: XX

CHECKED BY: SJJ

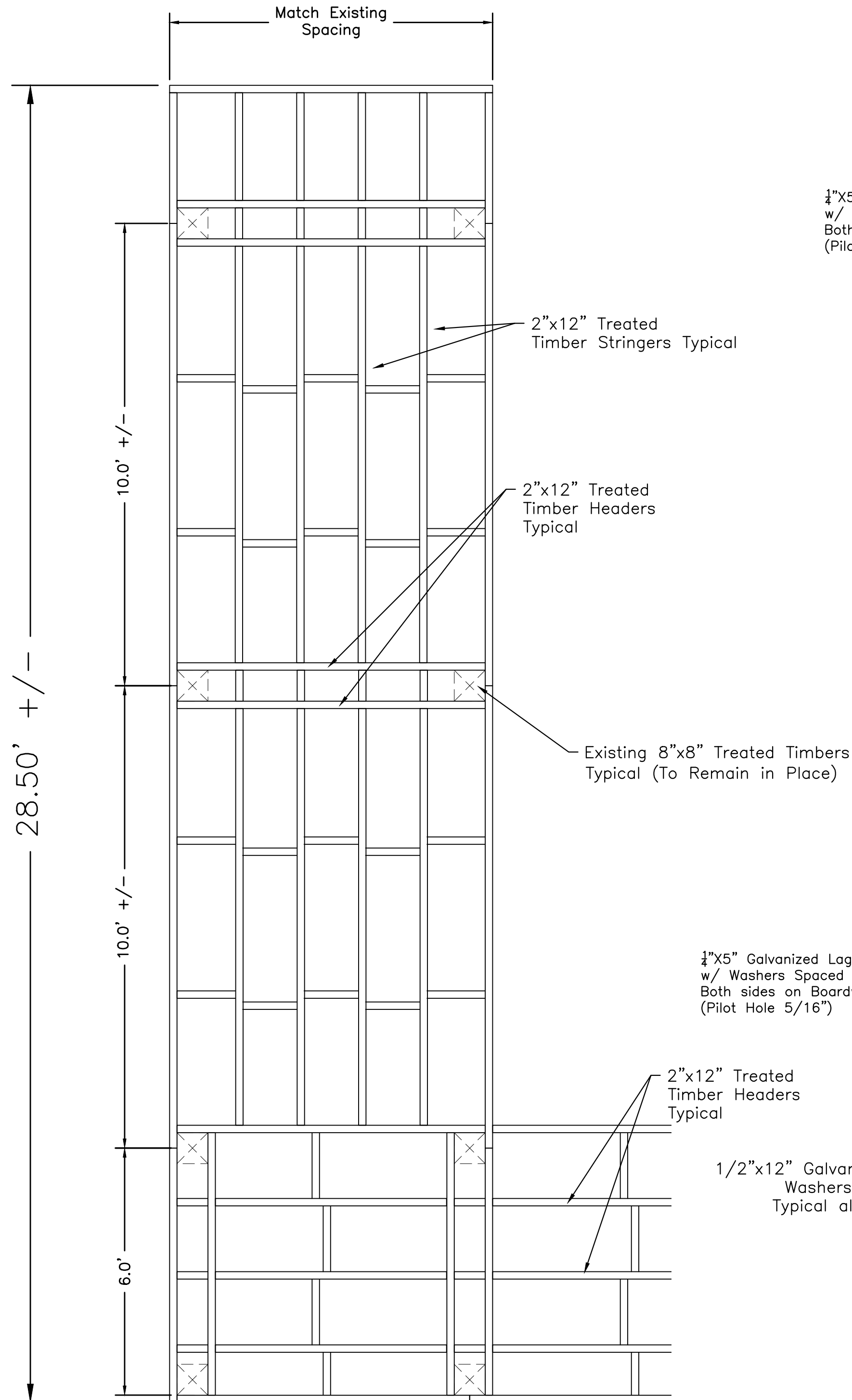
SHEET: 11 OF 14

G:\SRA\12510 BLUEBIRD RECREATION AREA\PRODUCTION\DWG\TOPO BASE.DWG

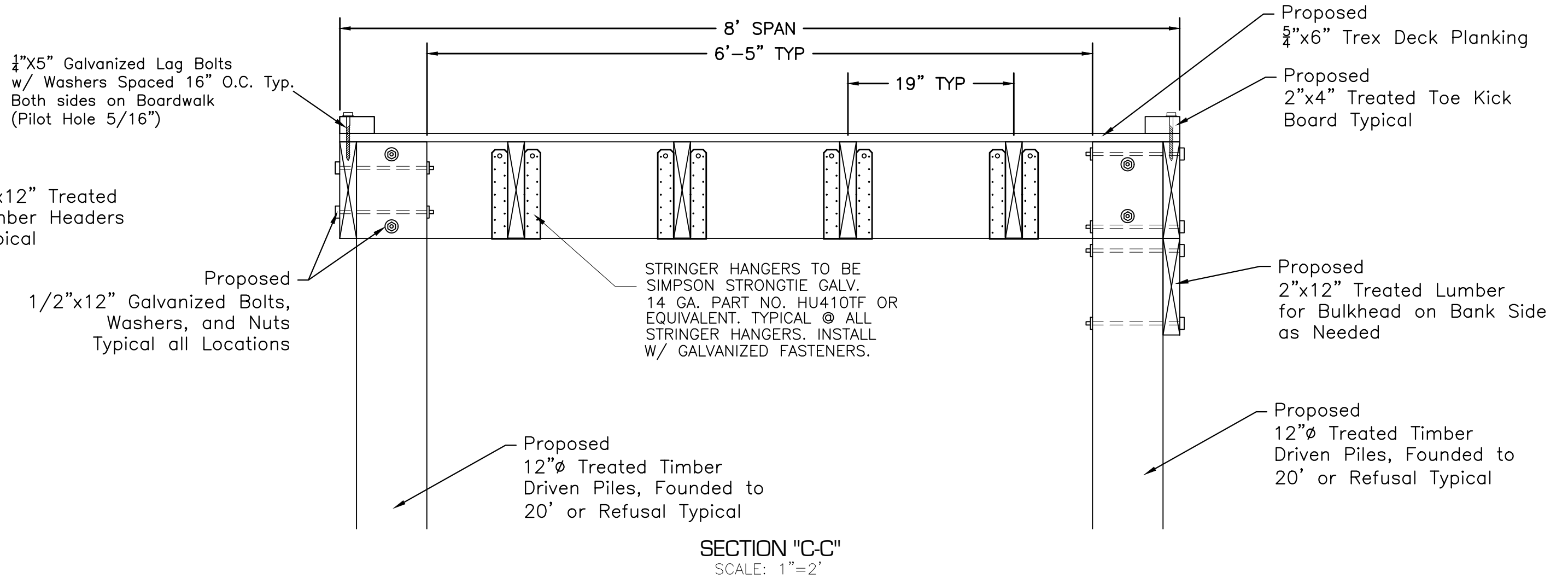
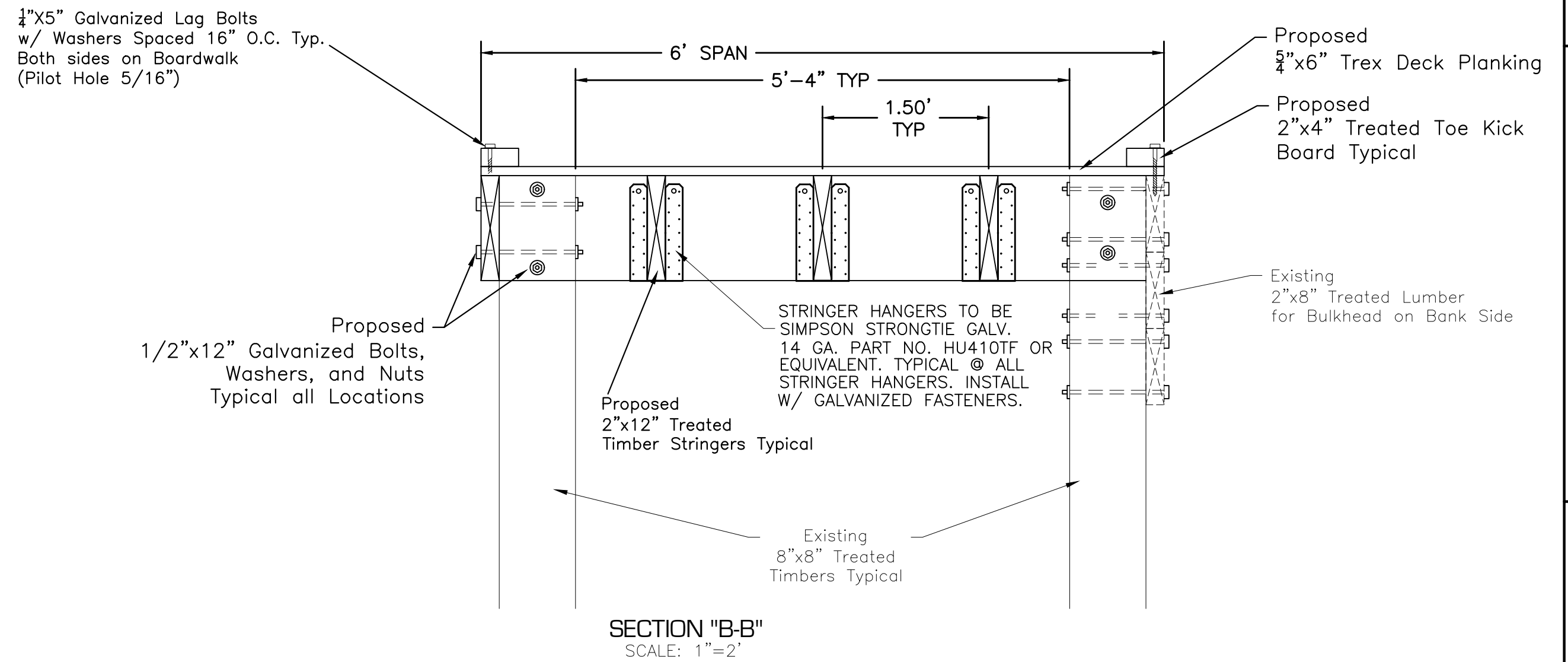
Monday, June 27, 2022 9:22:13 AM



PLAN VIEW OF EXISTING & PROPOSED BOARDWALK
SCALE: 1"=2'



PLAN VIEW OF EXISTING & PROPOSED BOARDWALK
FRAMING
SCALE: 1"=2'



REVISIONS	
DATE	BY

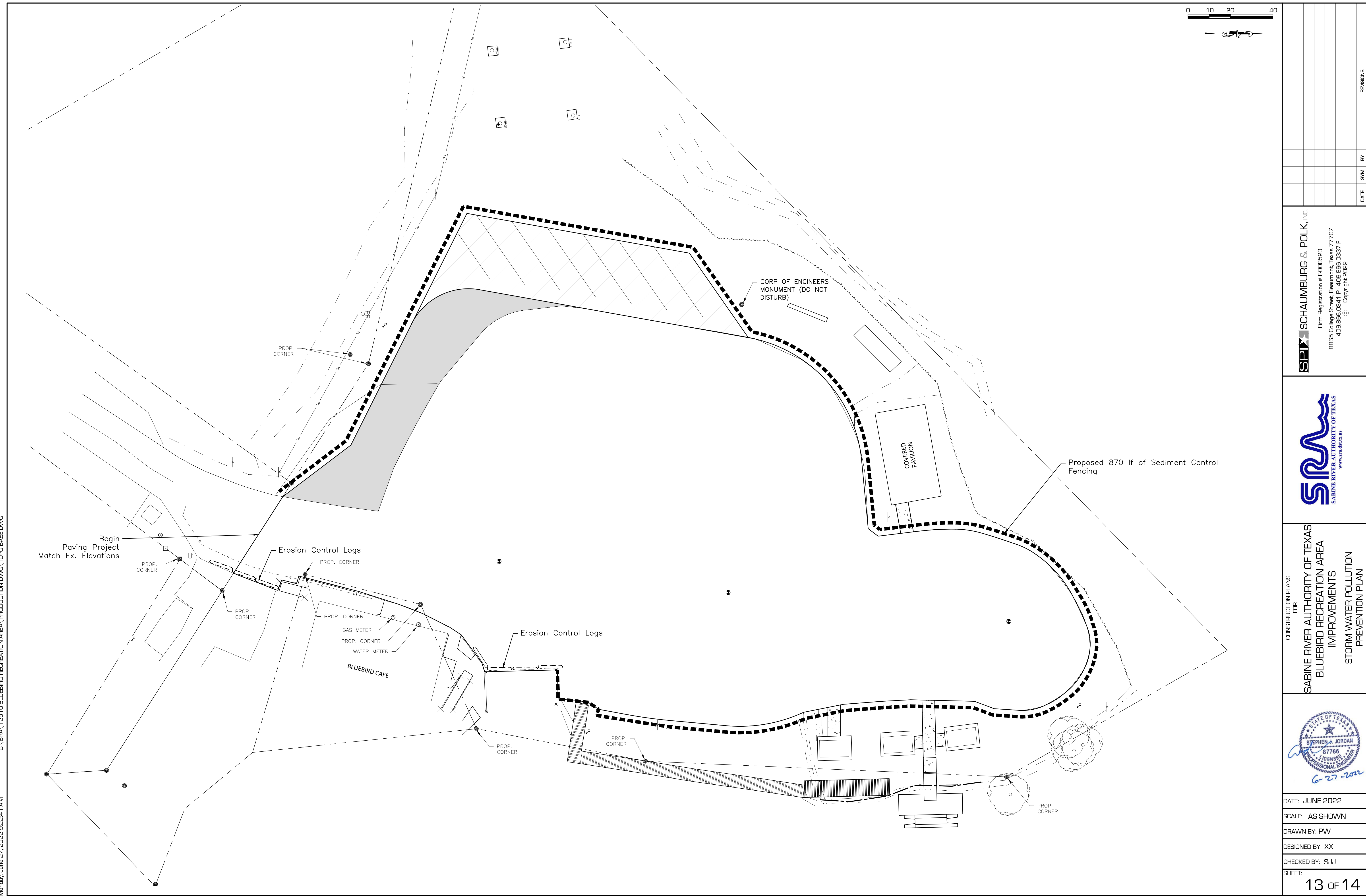
SPI SCHAUMBURG & POLK, INC.
Firm Registration # F000520
8865 College Street, Beaumont, Texas 77707
409.866.0341 P. 409.866.0337 F
© Copyright 2022

SRA SABINE RIVER AUTHORITY OF TEXAS
www.sra.texas.gov

CONSTRUCTION PLANS
FOR
SABINE RIVER AUTHORITY OF TEXAS
BLUEBIRD RECREATION AREA
IMPROVEMENTS

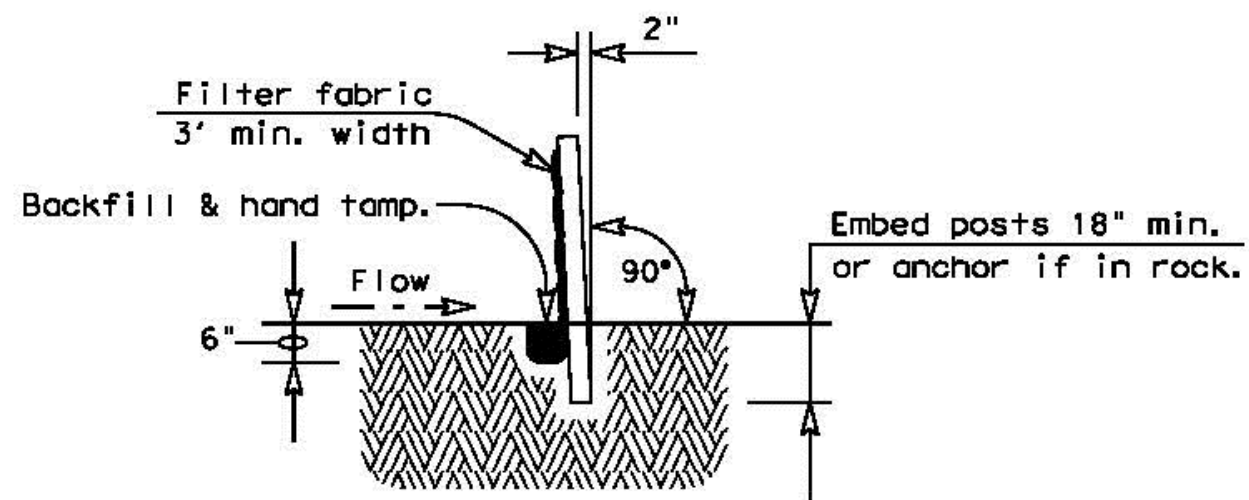
STEPHEN A. JORDAN
87766
LICENSED PROFESSIONAL ENGINEER
6-27-2022

DATE: JUNE 2022
SCALE: AS SHOWN
DRAWN BY: PVW
DESIGNED BY: XX
CHECKED BY: SJJ
SHEET: 12 OF 14



DISCLAIMER:
The use of this standard is governed by the "Texas Engineering Practice Act". No warranty of any kind is made by TxDOT for any purpose whatsoever. TxDOT assumes no responsibility for the conversion of this standard to other formats or for incorrect results or damages resulting from its use.

DATE:
FILE:



SECTION A-A

GENERAL NOTES

1. The guidelines shown hereon are suggestions only and may be modified by the Engineer.

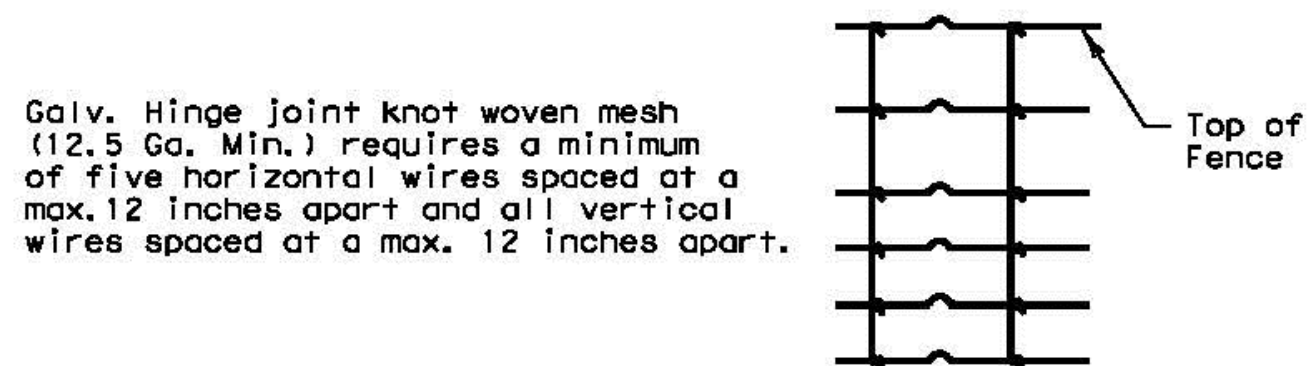
PLAN SHEET LEGEND

Sediment Control Fence — SCF —

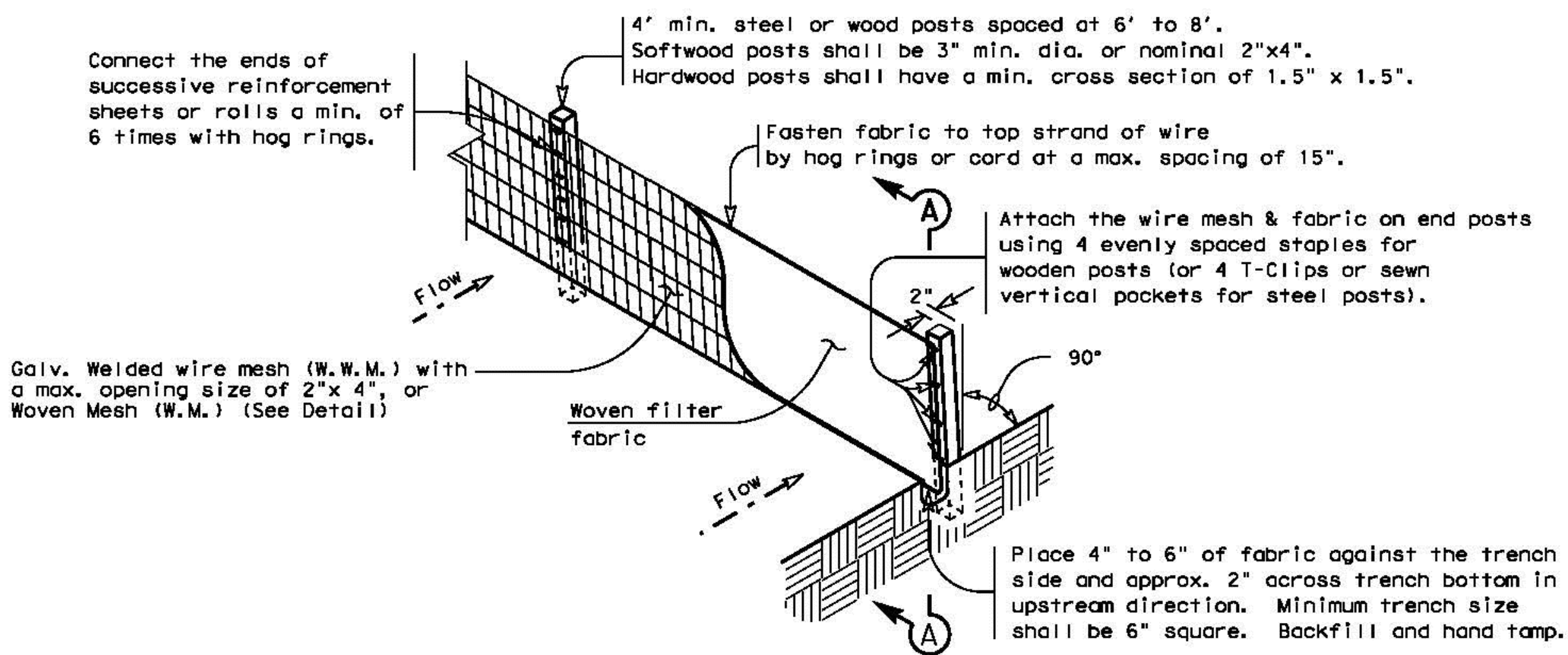
SEDIMENT CONTROL FENCE USAGE GUIDELINES

A sediment control fence may be constructed near the downstream perimeter of a disturbed area along a contour to intercept sediment from overland runoff. A 2 year storm frequency may be used to calculate the flow rate to be filtered.

Sediment control fence should be sized to filter a max. flow through rate of 100 GPM/FT². Sediment control fence is not recommended to control erosion from a drainage area larger than 2 acres.

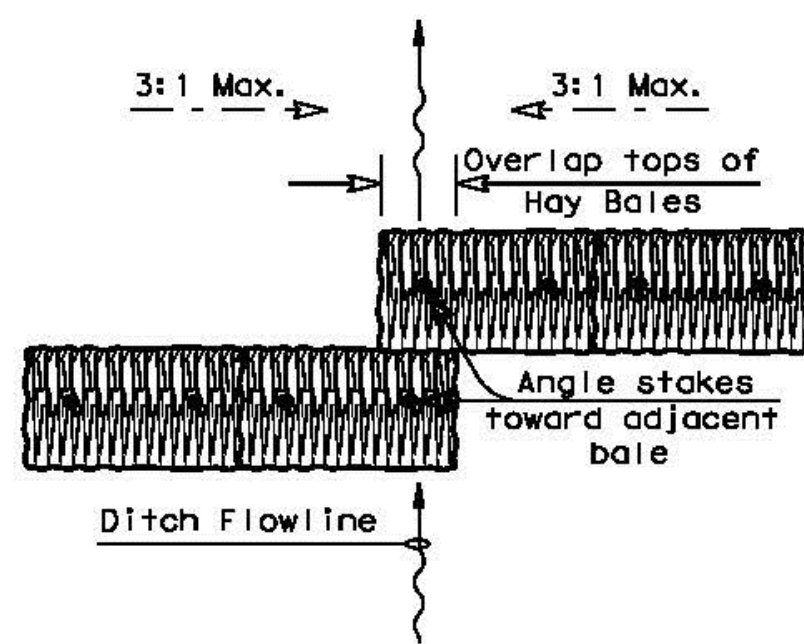


Hinge Joint Knot Woven Mesh (Option)

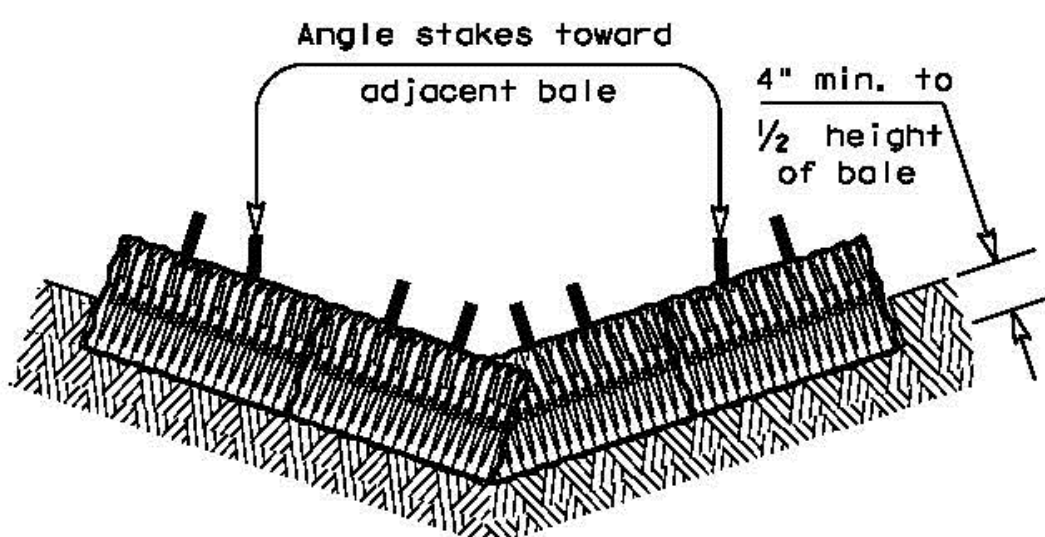


TEMPORARY SEDIMENT CONTROL FENCE

SCF



PLAN VIEW



PROFILE VIEW

PLANS SHEET LEGEND

Baled Hay — BH —

BALED HAY USAGE GUIDELINES

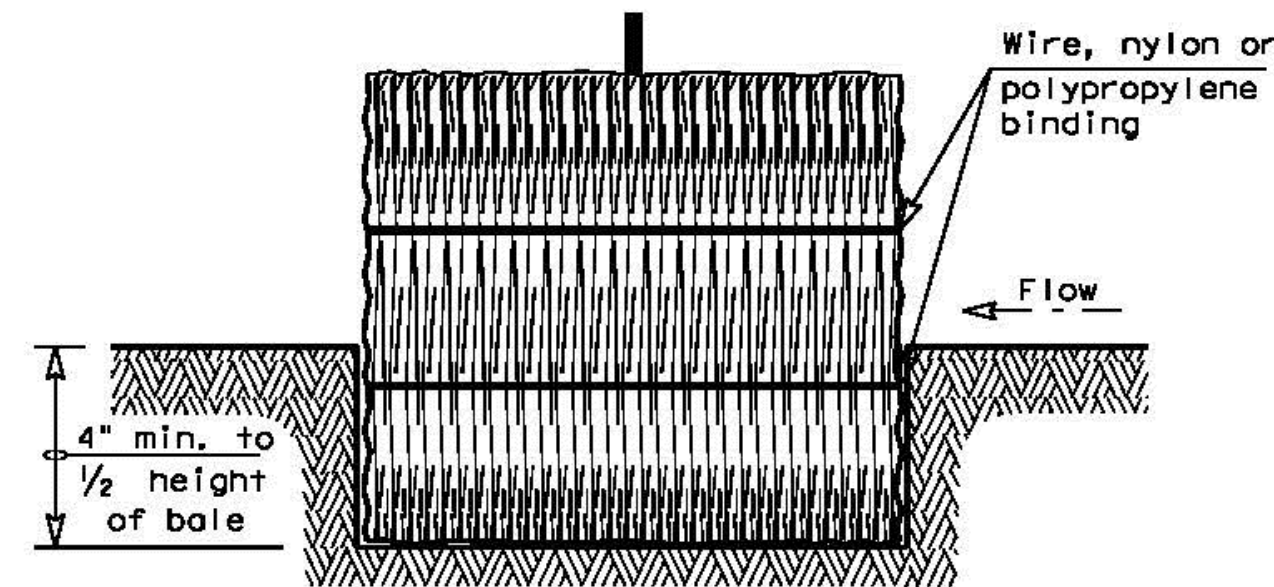
A Baled Hay installation may be constructed near the downstream perimeter of a disturbed area along a contour to intercept sediment from overland runoff. A two year storm frequency may be used to calculate the flow rate to be filtered. The installation should be sized to filter a maximum flow thru rate of 5 GPM/FT² of cross sectional area. Baled hay may be used at the following locations:

1. Where the runoff approaching the baled hay flows over disturbed soil for less than 100'. If the slope of the disturbed soil exceeds 10%, the length of slope upstream the baled hay should be less than 50'.
2. Where the installation will be required for less than 3 months.
3. Where the contributing drainage area is less than 1/2 acre.

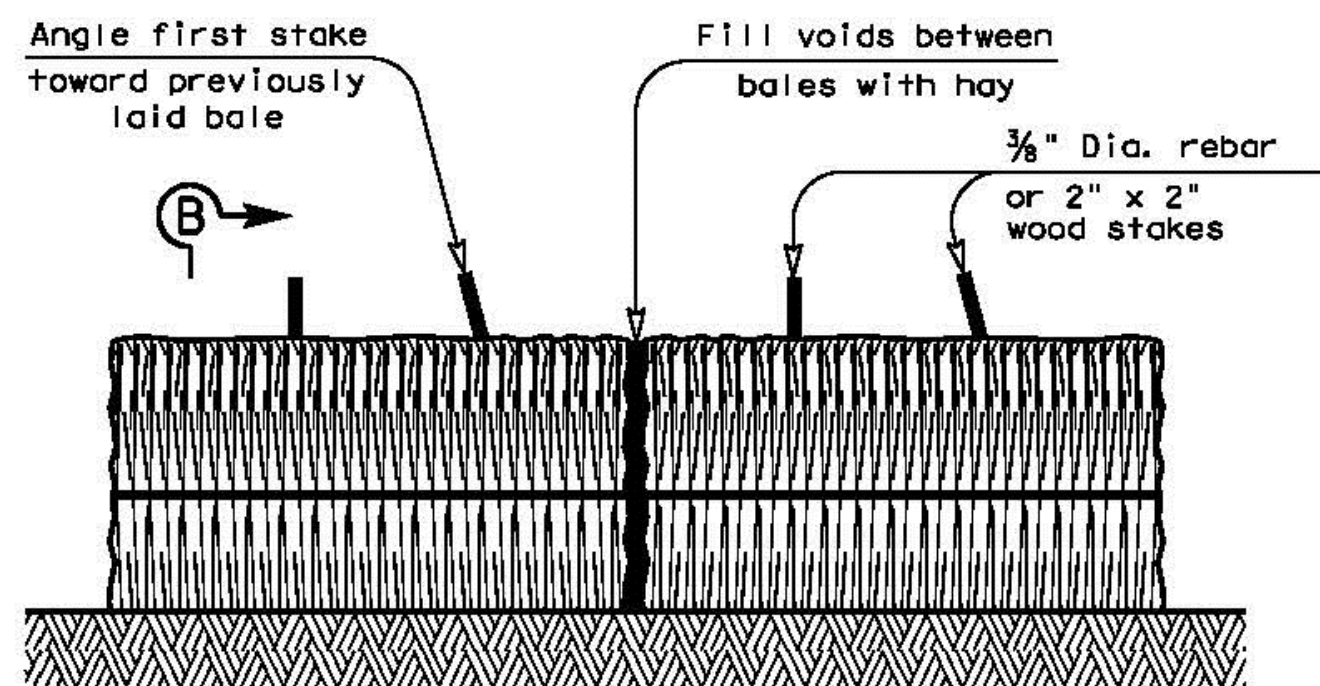
For Baled Hay installations in small ditches, the additional following considerations apply:

1. The ditch sideslopes should be graded as flat as possible to maximize the drainage flowrate thru the hay.
2. The ditch should be graded large enough to contain the overtopping drainage when sediment has filled to the top of the baled hay.

Bales should be replaced usually every 2 months or more often during wet weather when loss of structural integrity is accelerated.



SECTION B-B



BALED HAY FOR EROSION CONTROL

BH

GENERAL NOTES

1. Hay bales shall be a minimum of 30" in length and weigh a minimum of 50 Lbs.
2. Hay bales shall be bound by either wire or nylon or polypropylene string. The bales shall be composed entirely of vegetative matter.
3. Hay bales shall be embedded in the soil a minimum of 4" and where possible 1/2 the height of the bale.
4. Hay bales shall be placed in a row with ends tightly abutting the adjacent bales. The bales shall be placed with bindings parallel to the ground.
5. Hay bales shall be securely anchored in place with 3/8" Dia. rebar or 2" x 2" wood stakes, driven through the bales. The first stake shall be angled towards the previously laid bale to force the bales together.
6. The guidelines shown hereon are suggestions only and may be modified by the Engineer.

Texas Department of Transportation		Design Division Standard	
TEMPORARY EROSION, SEDIMENT AND WATER POLLUTION CONTROL MEASURES			
FENCE & BALED HAY			
EC(1)-09			
FILE: ec109.dgn	DN: TxDOT	CK: AM	DN: TV
© TxDOT June 1993	CONT	SECT	JOB
DIST		COUNTY	SHEET NO.