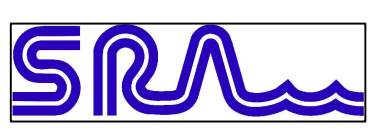
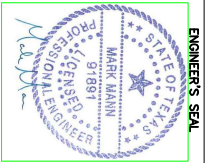


1. SCRA REMOVES SURFACE AND REPAIRS FOR RESTORATION OF BALANCE SOIL
 2. CLEAN AND SEAL JOINTS PER OWNER INSTRUCTION
 3. GRIND AND INSTALL PREPARED ASPHALTIC SURFACE TREATMENT PER TPOOT ITEM 5028

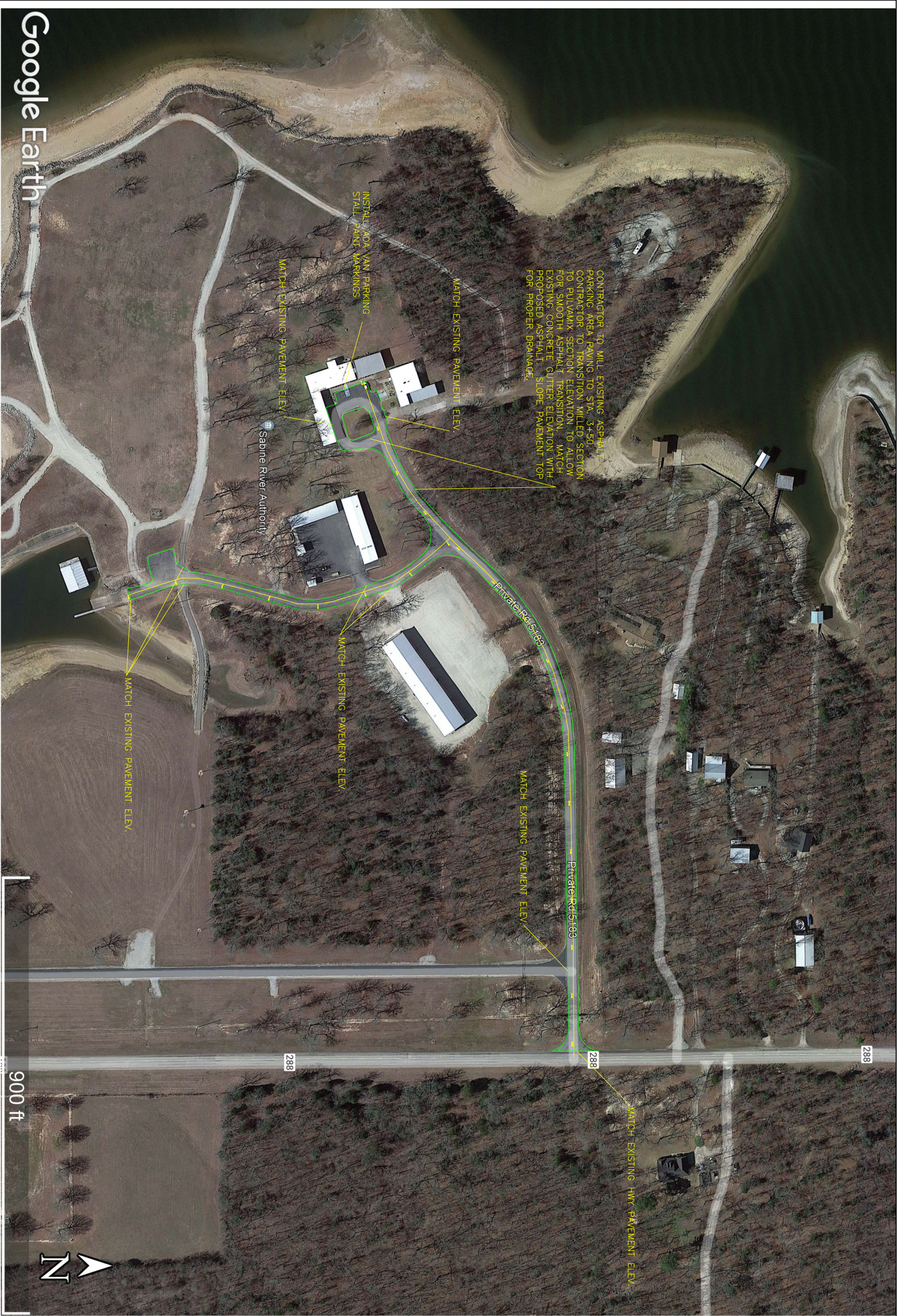
DATE	SYM	BY	REVISIONS



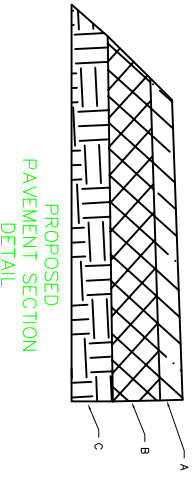
SABINE RIVER AUTHORITY
 OF TEXAS
 LAKE FORK DIVISION
 ASPHALT PAVEMENT
 REHABILITATION



ENGINEER'S SEAL
 DATE 3/17/23
 SCALE 12/2021
 AS SHOWN
 DRAWN BY MAM
 CHECKED BY MAM
 SHEET 1 OF 5
 DWG. NAME LFD 2023 ACP REHAB



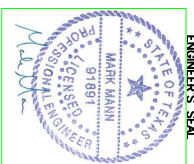
Google Earth



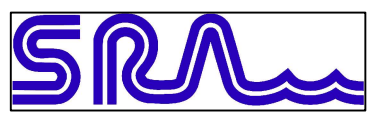
PROPOSED PAVEMENT SECTION DETAIL

- A. 3" HMA/C TYPE D TPOOT ITEM 340
- B. 10" CEMENT TREATED SUB GRADE PER TPOOT ITEM 275 at 3.5% CEMENT by DRY WEIGHT OF MATERIAL, COMPACTED TO 95% PER ASTM D1557, MAINTAIN MOISTURE CONTENT MINIMUM 24 HOURS & MICRO CRACK SURFACE PER ITEM 275.
- C. SUBGRADE, PROOF ROLL AND REPAIR SOFT SPOTS WITH TYPE A GRADE 1 Limestone COMPACTED TO 95% PER ASTM D 698.

900 ft



SABINE RIVER AUTHORITY OF TEXAS
LAKE FORK DIVISION OFFICE
ASPHALT PAVEMENT REHABILITATION

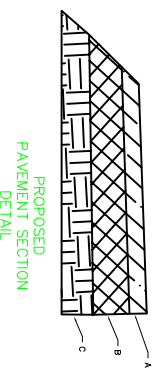


DATE	SYM	BY	REVISIONS

DATE	3/17/23
DATE	12/2021
SCALE	AS SHOWN
AS SHOWN	
DRAWN BY	MM
CHECKED BY	MM
SHEET	2 OF 5
DWG. NAME	LFD 2023 ACP REHAB



Google Earth



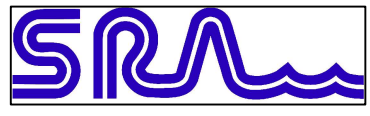
PROPOSED
PAVEMENT SECTION
DETAIL

A. 2" HMAc TYPE D 300T PER 340
 B. 10" CEMENT TREATED SUB GRADE PER 700T PER 275 at 3.5% CEMENT BY DRY WEIGHT OF MATERIAL, COMPACTED TO 95% PER ASTM D1557, MAXIMUM MOISTURE CONTENT MAXIMUM 2% HOURS & MICRO CHECK SURFACE PER PER 275.
 C. SUBGRADE, PROOF ROLL AND REPAIR SOFT SPOTS WITH TYPE A GRADE 1 Limestone COMPACTED TO 95% PER ASTM D 984.

1000 ft

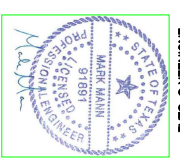


DATE	SYM	BY	REVISIONS



SABINE RIVER AUTHORITY
OF TEXAS

LAKE FORK DIVISION
S&R CABIN ASPHALT PAVEMENT
REHABILITATION



ENGINEER'S SEAL

DATE 3/17/23

SCALE AS SHOWN

DRAWN BY VM

CHECKED BY VM

SHEET 3 OF 5

DWG. NAME LFD 2023 ACP REHAB



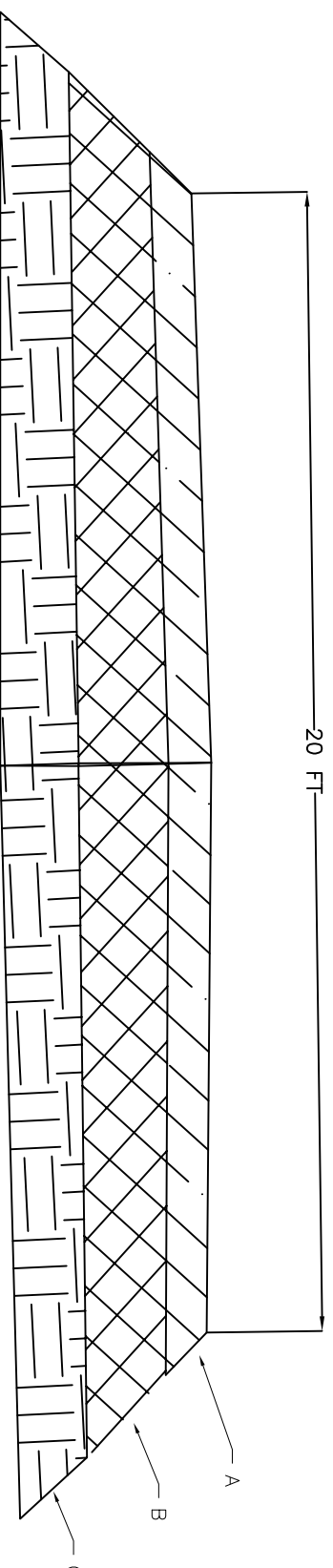
VICINITY LOCATION MAP



MATCH EXISTING PAVEMENT ELEV.

ENLARGED PLAN

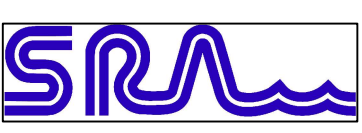
PROPOSED PAVEMENT SECTION DETAIL



- A. 2" HMAC TYPE D TXDOT ITEM 340
- B. 10" CEMENT TREATED SUB GRADE PER TXDOT ITEM 275 at 3.5% CEMENT by DRY WEIGHT OF MATERIAL. COMPACTED TO 95% PER ASTM D1557. MAINTAIN MOISTURE CONTENT MINIMUM 24 HOURS & MICRO CRACK SURFACE PER ITEM 275.
- C. SUBGRADE, PROOF ROLL AND REPAIR SOFT SPOTS WITH TYPE A GRADE 1 LIMESTONE COMPACTED TO 95% PER ASTM D 698.

MATCH EXISTING PAVEMENT ELEV.

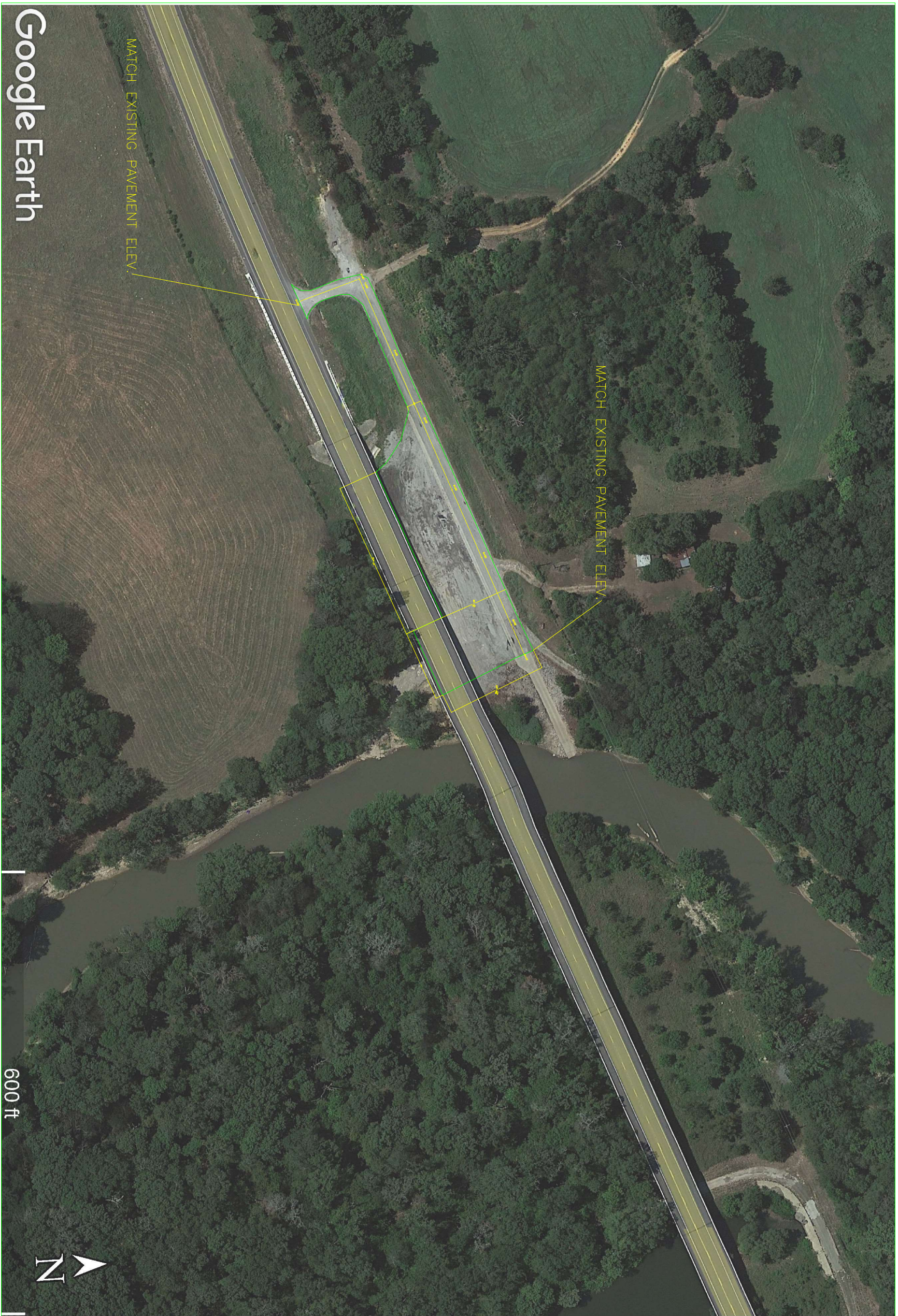
DATE	SYM	BY	REVISIONS



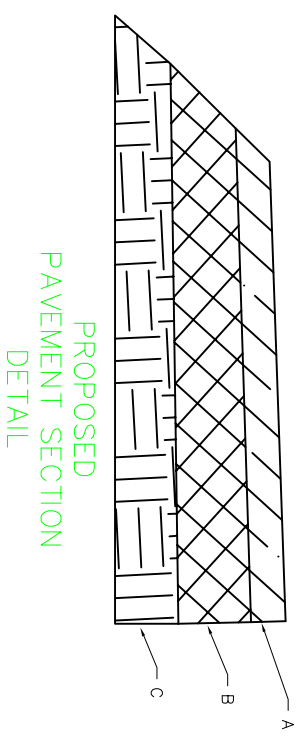
SABINE RIVER AUTHORITY OF TEXAS
 LAKE FORK DIVISION
 S&R CABIN ASPHALT PAVEMENT REHABILITATION



DATE: 3/17/23
 SCALE: AS SHOWN
 DRAWN BY: MM
 CHECKED BY: MM
 SHEET: 4 OF 5
 DWG. NAME: LFD 2023 ACP REHAB



Google Earth

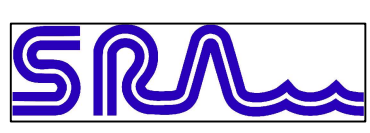


- A. 2" HMAC TYPE D TxDOT ITEM 340
- B. 10" CEMENT TREATED SUB GRADE PER TxDOT ITEM 275 AT 3.5% CEMENT BY DRY WEIGHT OF MATERIAL. COMPACTED TO 95% PER ASTM D1557. MAINTAIN MOISTURE CONTENT MINIMUM 24 HOURS & MICRO CRACK SURFACE PER ITEM 275.
- C. EXISTING SUBGRADE, PROOF ROLL AND REPAIR SOFT SPOTS WITH TYPE A GRADE 1 LIMESTONE COMPACTED TO 95% PER ASTM D 698.



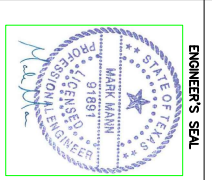
600 ft

DATE	SYM	BY	REVISIONS



SABINE RIVER AUTHORITY
OF TEXAS

LAKE FORK DIVISION
HWY 14 RAMP ASPHALT
PAVEMENT REHABILITATION



DATE	3/17/23
SCALE	AS SHOWN
DRAWN BY	VJM
CHECKED BY	NAM
SHEET	5 OF 5
DWG. NAME	LFD 2023 ACP REHAB