



212 W. Ninth Street • Tyler, Texas 75701 • (903) 597-6606

Pendleton Office

Addendum #3

Wednesday, August 13, 2025

Pendleton Office
Addendum No. 3
Date: August 13, 2025

To All Plan Holders:

This addendum has been issued to address questions received via CivCast and during the pre-bid meeting, and to provide the following revisions and clarifications:

Plan Revisions:

- Electrical:
 - Attached are the revised sheets referenced in addendum #2. Sheet E102 & E200.
- Architectural:
 - Attached summary and sheets A104, A201, and A701.

Civcast//Prebid/Email Questions:

Q/A item 33 states that the subcontractor non-collusion affidavits are to be submitted with the bid. This will be very difficult on bid day as we put our bid together. The required uploads tab on Civcast only asks for the Prime Contractor Non Collusion Affidavit. Can we confirm that only the Prime Non Collusion Affidavit is due on bid day and the subcontractor non-collusion affidavits can maybe be turned in the following day?

A: Please only submit what is required on Civcast required uploads. Non Collusion Affidavit (Prime).

The excel bid form on Civcast does not have a section for the unit prices. These unit prices will also be very difficult to get on bid day. Is the intent for the unit prices to be submitted by the successful bidder upon award or can these also be submitted the following day?

A: Unit Prices will need to be submitted as a PDF on the Civcast required uploads.

Q/A item 7 states to use a 40' flag pole but Q/A item 22 states to reference the spec section which calls for a 23' pole.

A: The flagpole will be a 40' pole.

I need some clarification on Restrooms 118 & 119. The floor finish plan (A201) shows CT01 which is the floor tile as the wall tile as well. I'm not finding any elevations for these (2) restrooms. Are we tiling the shower floor and walls here as well?

A: Yes, the walls will be tiled in these rooms.

Spec Section 077200 references roof hatches. There aren't any roof hatches shown on the roof plan A801. Will a roof hatch be required as part of the project? If so, please advise on location.

A: No roof hatches.

Spec Section 102600 references door protection. We didn't see any specific protection shown on the plans. Is this spec section in addition to the door hardware allowance?

A: Kick and push plates for all restroom doors.

Will access controls and data be the responsibility of the contractor, or are we only to install the pathways in walls?

A: Subcontractor responsible for providing junction boxes and conduit with pull string. Owner is responsible for pulling and providing cable.

Is Springs Window Fashions Contract an acceptable substation for this project.

A: Yes, as long as it meets quality and material requirements per specifications.

Both Manual and Motorized shades are listed in the specifications but cannot find any designations on the drawings to determine if manual or motorized is desired.

A: Manual shades per updated spec and window schedule.

Para 1.6 A calls for furnishing extra materials of full size units equal to 5 percent of quantity installed. What is intended for attic stock for blinds

A: This line does not apply. No extra stock needed.

Roller shade specs call for inside jamb installation and outside jamb installation. How will they be mounted?

A: Inside jamb installation.

Roller shade specifications call for front fascia, exposed headbox, and recessed shade pocket. Which is desired for this project?

A: Front fascia installation.

Will there need to be cold-formed metal framing at the soffits, or is the intent for the metal panels to fasten directly to the metal building structural members?

A: Attach soffit panel to PEMB purlins where soffit follows slope of the roof. Provide light gauge metal stud framing where flat soffit is shown.

Regarding RR 118 & 119, the floor finish plan calls for walls to be CT01 as well as the floor. Will we get an elevation view of these restrooms? Are we tiling the shower floors and walls in these rooms?

A: Revised Sheets have been added to addendum #3.

The ATS is after the disconnect but the spec calls for Service Entrance Rated. Is it okay to quote a Non Service Entrance Rated switch?

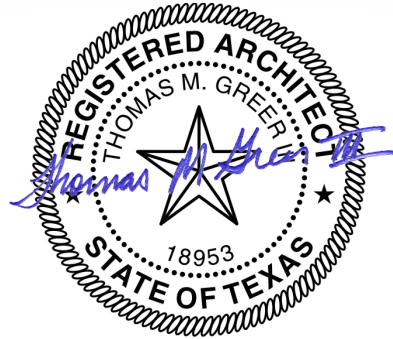
A: It is necessary that the ATS be Service Entrance Rated as upon loss of utility power it becomes the building Main Disconnect.

Bidders are required to acknowledge receipt of this addendum in their bid submission on Civcast.

END OF ADDENDUM

ADDENDUM #03

Date: 08/12/25
Client: SRA
Project: Pendleton Park
Hemphill, Texas
Project No.: 21.095



To: All Bidders of Record

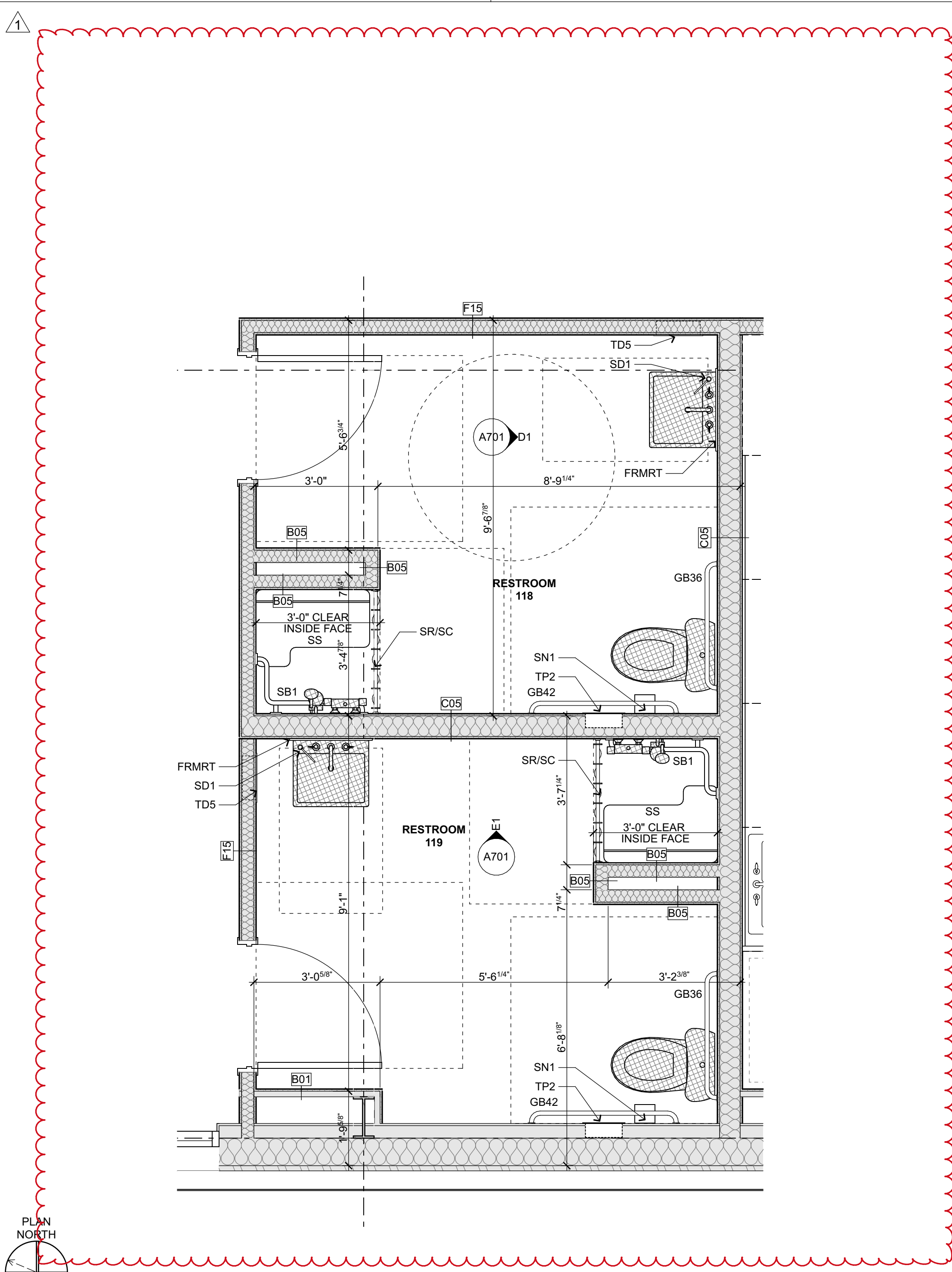
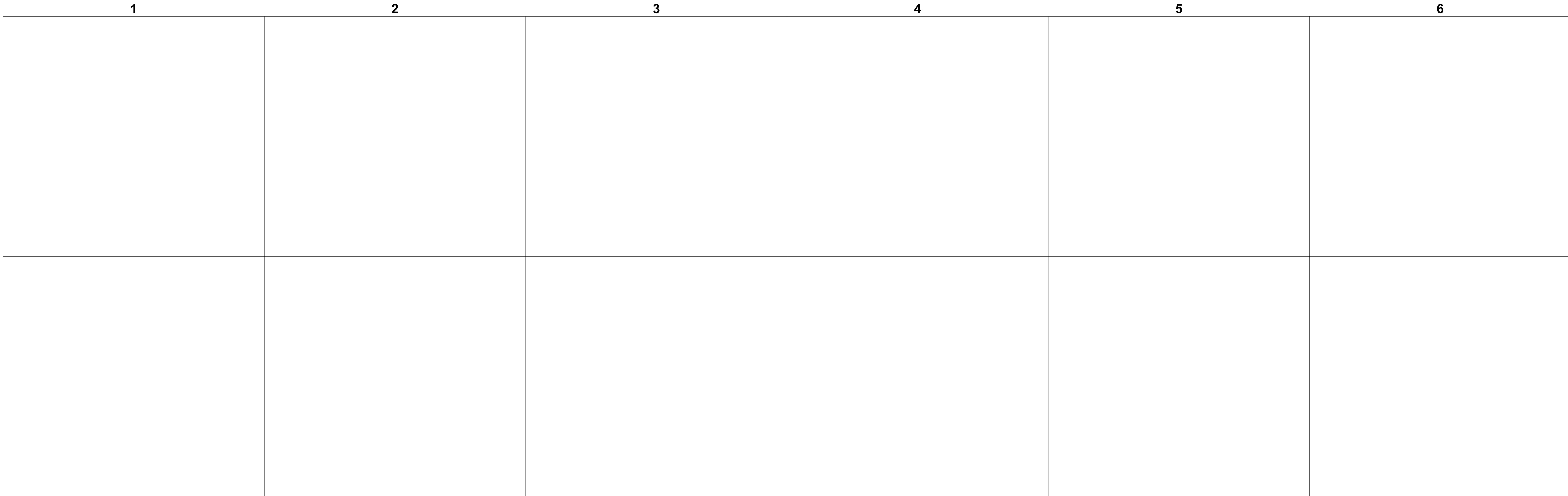
Acknowledge receipt of the Addendum by inserting its number on your construction proposal. This Addendum shall form a part of the Contract Documents and modifies them as follows:

ARCHITECTURAL

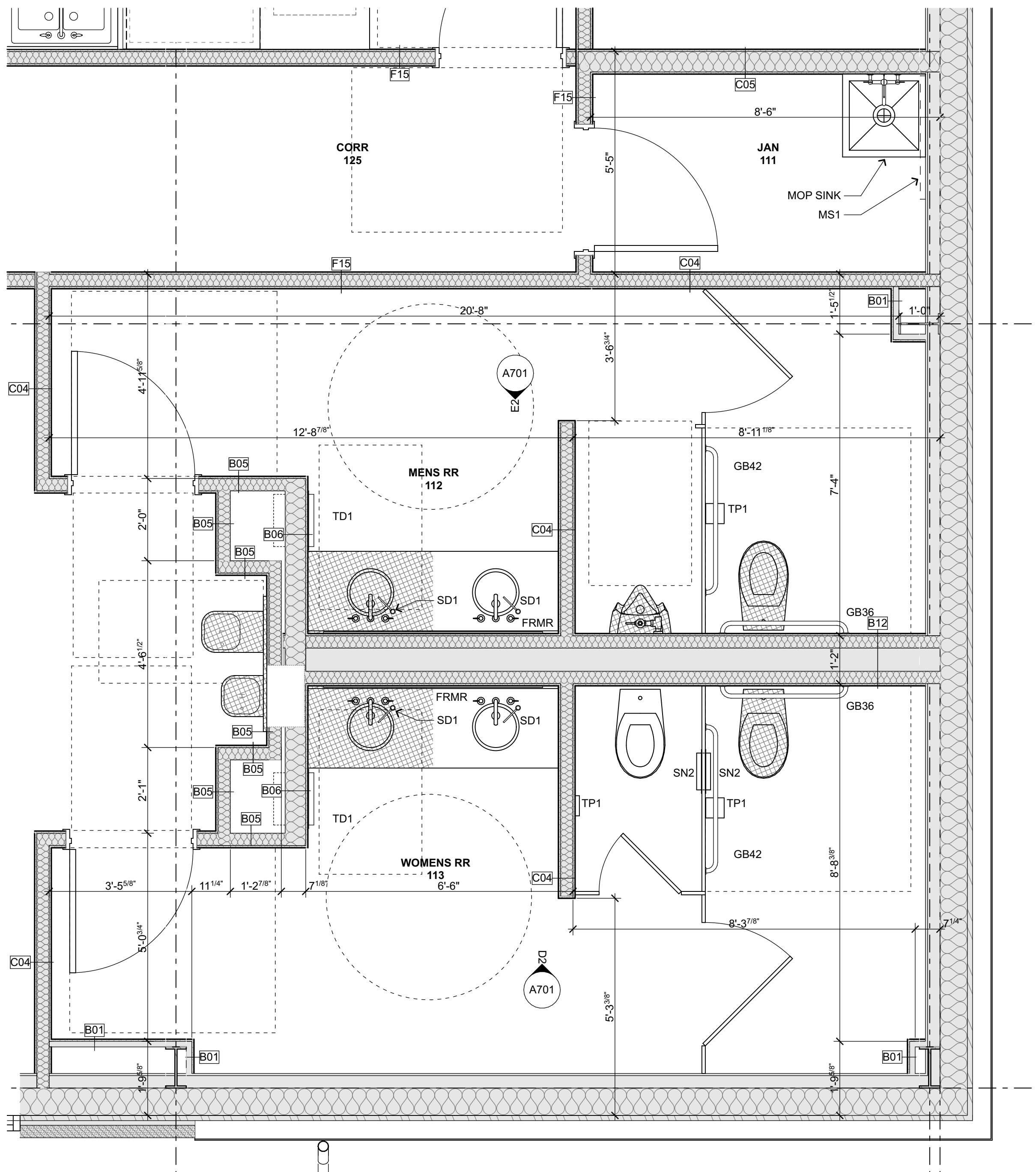
- ITEM 1.01. A104 – REVISION Interior elevation markers added to restrooms.
- ITEM 1.02. A201 – REVISION Restroom wall tile style designation changed. Restroom 118 and Restroom 119 all walls to be tiled.
- ITEM 1.03. A701 – REVISION Interior elevations added.

ELECTRICAL

- ITEM 1.04. E102 – REVISION Conduit for video display to above accessible ceiling.
- ITEM 1.05. E102 – ADDITION Add additional receptacles and branch circuits for “stacked” microwaves at Kitchen and Break Rm.
- ITEM 1.06. E102 – ADDITION Add 4” conduit between IT Room and Storage Rm. 108.
- ITEM 1.07. E102 – ADDITION Add (2) duplex receptacles and branch circuits for A/V rack equipment.
- ITEM 1.08. E102 – ADDITION Add (3) 2” conduits from A/V Rack to above ceiling.
- ITEM 1.09. E102 – ADDITION Add (2) floor boxes for Data/Com and conduit to Storage Rm. 108.
- ITEM 1.10. E102 – ADDITION Add (1) additional floor box with duplex receptacle and data outlet.
- ITEM 1.11. E102 – ADDITION Add (3) junction boxes and conduit for Cameras to above accessible ceiling.
- ITEM 1.12. E200 – ADDITION Added new branch circuits to Panel ‘A’ schedule.



A2 RR 119 & 121 ENLARGED
A104 SCALE: 1/2" = 1'-0"

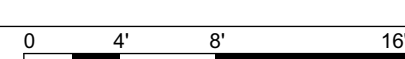
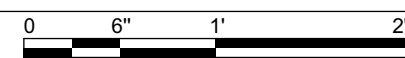
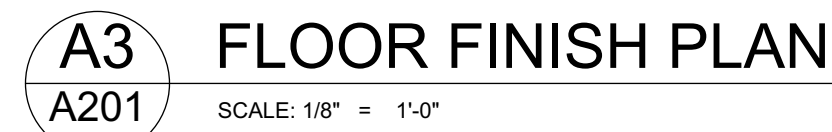
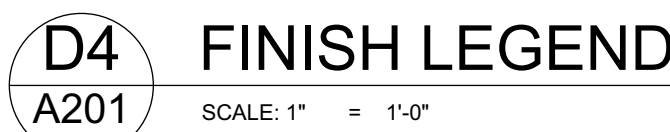


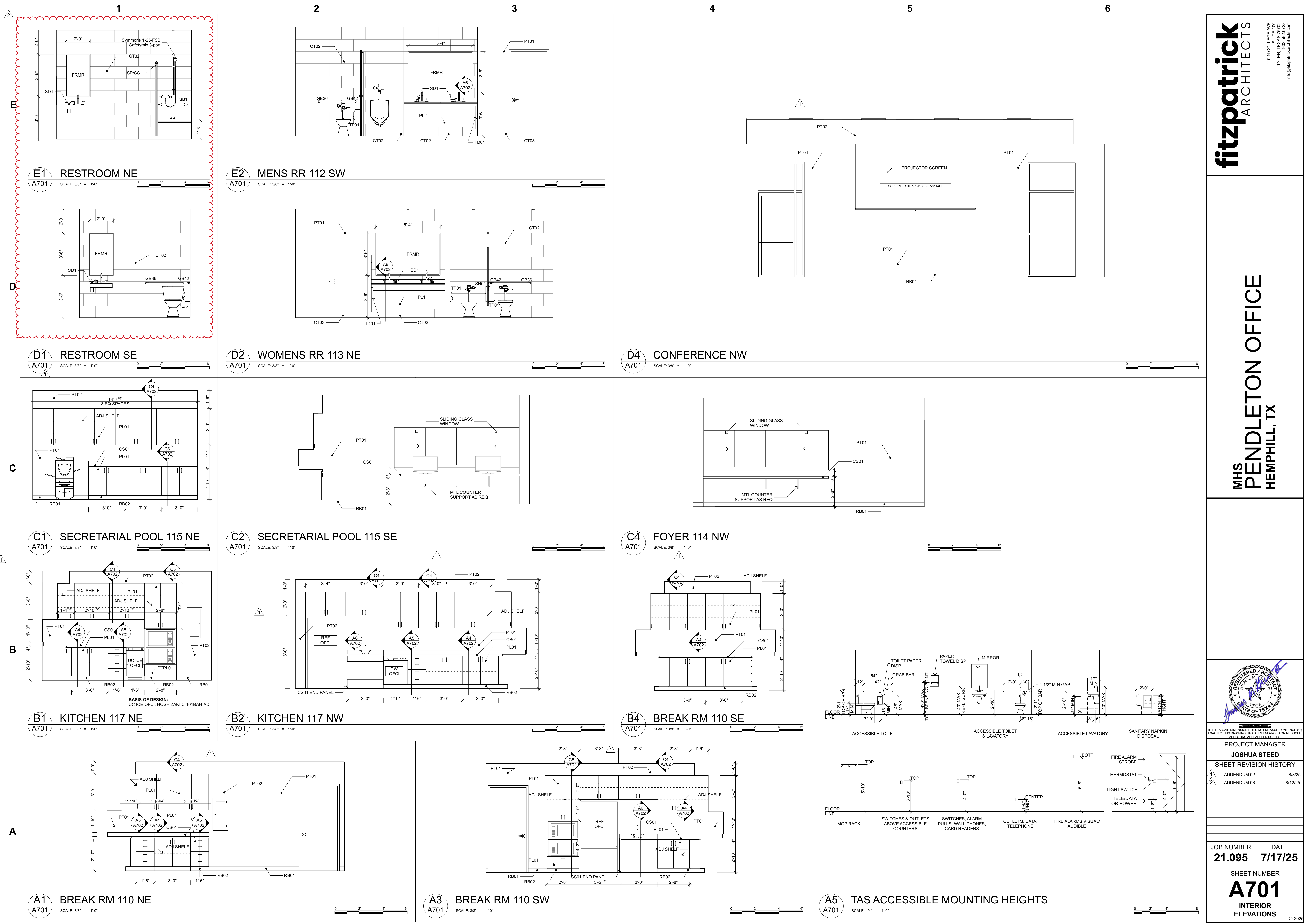
A4 MENS & WOMENS RR ENLARGED
A104 SCALE: 1/2" = 1'-0"



PROJECT MANAGER		
JOSHUA STEED		
SHEET REVISION HISTORY		
1	ADDENDUM 03	8/12/25

REMARKS
1. CONTINUE FLOORING UNDER MILLWORK AT ALL KNEE SPACES
2. MITER CORNERS @ ALL WATERFALL EDGES, TYP
3. FOR CEILING PAINT COLORS, REFER TO REFLECTED CEILING PLAN





fitzpatrickARCHITECTS

110 N COLLEGE AVE
SUITE 100
TYLER, TEXAS 75702
903.332.0728
info@fitzpatrickarchitects.com

MHS

PENDLETON OFFICE

HEMPHILL, TX

PROJECT MANAGER
JOSHUA STEED

SHEET REVISION HISTORY
1 ADDENDUM 02 8/8/25
2 ADDENDUM 03 8/12/25

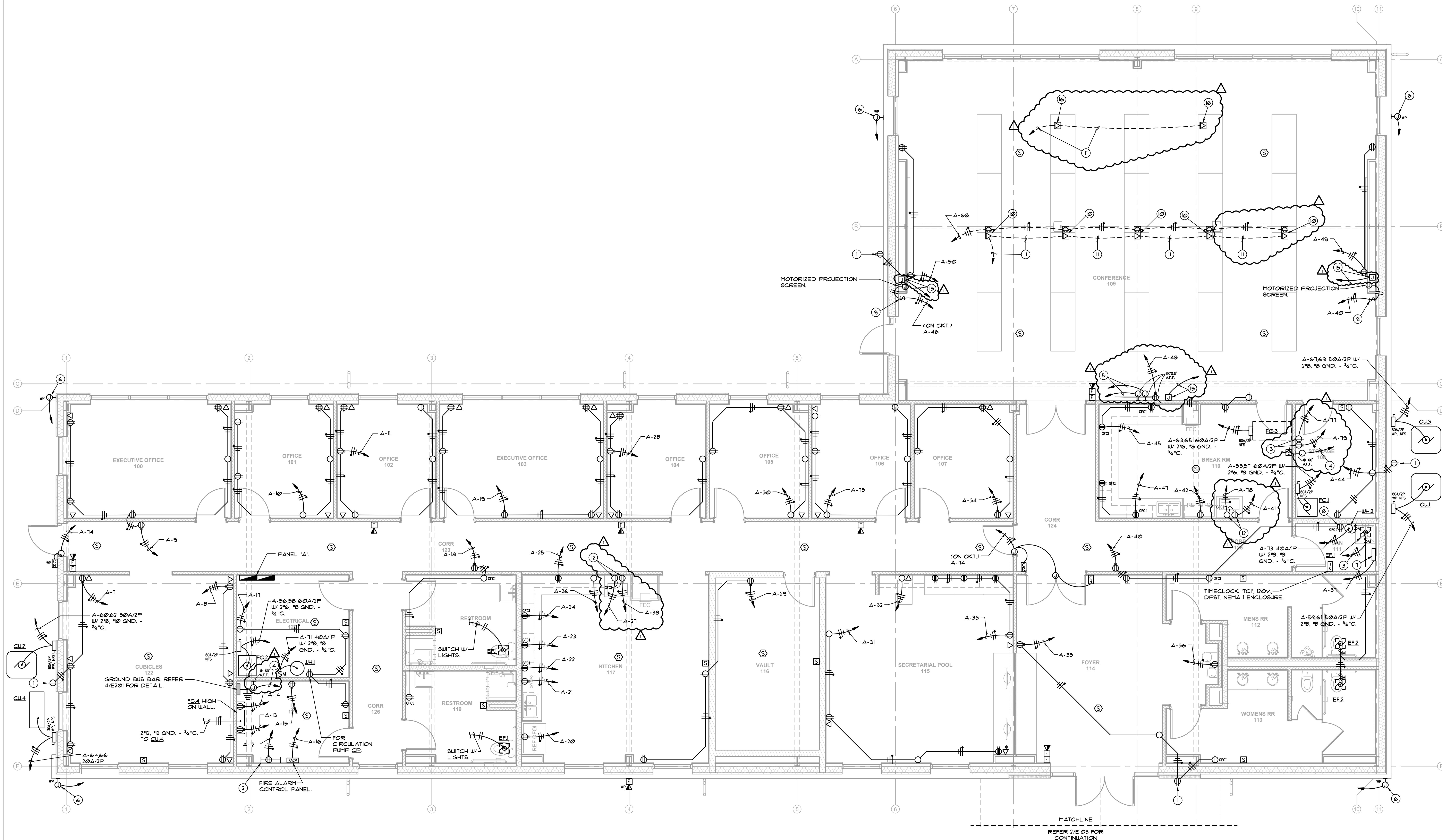
JOB NUMBER
21.095

DATE
7/17/25

SHEET NUMBER
A701

INTERIOR
ELEVATIONS

© 2025



PLAN GENERAL NOTES

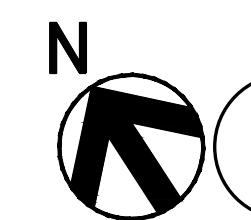
1. REFER DRAWING E200 FOR ELECTRICAL SYMBOL LEGEND.
2. REFER DRAWING E200 FOR PANEL SCHEDULE.

FIRE ALARM SYSTEM GENERAL NOTES

1. FIRE ALARM DEVICES SHOWN ARE FOR REFERENCE ONLY. PLANS TO BE SUBMITTED TO THE LOCAL AUTHORITY HAVING JURISDICTION BY THE INSTALLING CONTRACTOR PRIOR TO INSTALLATION.
2. ALL FIRE ALARM VISUAL AND AUDIBLE ALARM DEVICES SHALL COMPLY WITH PROVISIONS OF NFPA 72 AND 101.
3. ALL FIRE ALARM DEVICES INDICATED ON FLOOR PLAN ARE DIAGNOSTIC. PROVIDE AND INSTALL ADDITIONAL FIRE ALARM DEVICES AS REQUIRED BY THE LOCAL AUTHORITY HAVING JURISDICTION TO MEET CODE REQUIREMENTS.
4. FIRE ALARM COMPONENTS SHALL BE DESIGNED AND INSTALLED BY A LICENSED, STATE CERTIFIED, FIRE ALARM CONTRACTOR.
5. REFER FIRE ALARM RISER DIAGRAM 2/E201 FOR ADDITIONAL INFORMATION.

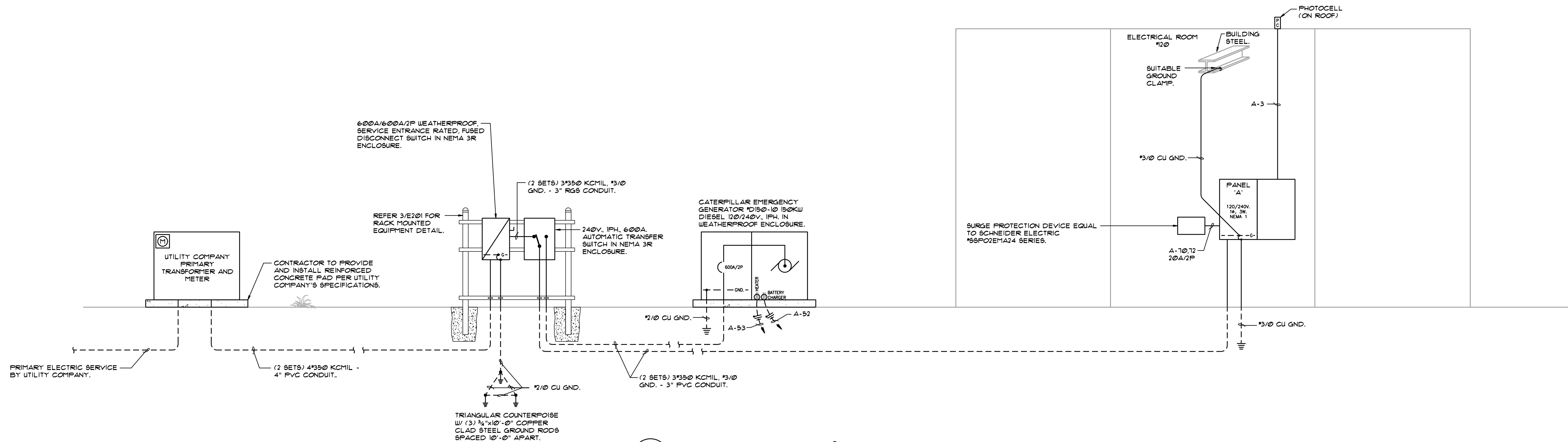
POWER PLAN NOTES BY SYMBOL

1. PROVIDE AND INSTALL W.R. LISTED GFCI, 20A, 125V, DUPLEX RECEPTACLE WITH METAL "IN USE" COVER EQUAL TO T4B "COMMON" SERIES.
2. 4' x 4' x 3/4" PAINTED, PLYWOOD TELEPHONE / DATA TERMINAL BOARD.
3. A-51 2"1/2, 1/2 GND. - 3/4" CONDUIT, CONTROL THRU TIMECLOCK TCI, 120V, DPST, NEMA 1 ENCLOSURE EQUAL TO TORK #102A SERIES.
4. PROVIDE AND INSTALL (1) 4" C. WITH FULL STRING TO STORAGE RM. #108 A/V EQUIPMENT RACK.
5. 3/4" EMPTY PVC CONDUIT WITH FULL STRING FOR CABELING BETWEEN VIDEO MONITOR AND A/V EQUIPMENT RACK IN STORAGE RM. #108.
6. WEATHERPROOF JUNCTION BOX FLUSH IN EVE FOR SECURITY CAMERA WITH 3/4" EMPTY PVC CONDUIT WITH FULL STRING TO I.T. ROOM #121, VERIFY EXACT LOCATION.
7. IRRIGATION CONTROLLER, VERIFY EXACT LOCATION.
8. FOR CIRCULATION PUMP CE.
9. PROVIDE AND INSTALL 3 POSITION SWITCH FOR MOTORIZED PROJECTION SCREEN, 'UP', 'DOWN' & 'STOP'.
10. PROVIDE AND INSTALL FLUSH FLOOR BOX WITH DUPLEX RECEPTACLE AND DATA/COM OUTLET.
11. 1" EMPTY CONDUIT WITH FULL STRING TO STORAGE RM. #108 A/V EQUIPMENT RACK, VERIFY POINT OF TERMINATION.
12. COORDINATE MOUNTING HEIGHT OF RECEPTACLE WITH THE MOUNTING HEIGHT OF MICROWAVE.
13. PROVIDE AND INSTALL (2) 20A, 125V, DUPLEX RECEPTACLES FOR A/V RACK EQUIPMENT, COORDINATE EXACT LOCATION WITH A/V CONTRACTOR.
14. PROVIDE AND INSTALL (3) 2" CONDUITS WITH FULL STRING TO ABOVE ACCESSIBLE CEILING FROM A/V EQUIPMENT RACK, PROVIDE WITH NYLON BUSHINGS AT EACH END.
15. PROVIDE AND INSTALL FLUSH MOUNTED JUNCTION BOX AT 80" AFF WITH 3/4" C. WITH FULL STRING TO ABOVE ACCESSIBLE CEILING FOR CAMERAS.
16. PROVIDE AND INSTALL FLUSH FLOOR BOX WITH DATA/COM OUTLET.



FLOOR PLAN - POWER

SCALE: 1/4" = 1'-0"



1 ELECTRICAL RISER DIAGRAM
SCALE: NONE

PANEL 'A'													
NOTES		LOAD				LOAD				NOTES		P	AMP
		DESCRIPTION	P	AMP	POWER	DESCRIPTION	P	AMP	POWER				
		Lighting	1	20	1400	1	A	2	1320	1	20	Lighting	
		Exterior Bldg. Lights	1	20	437	3	B	4	317	2	20	Parking Lot Lighting	
		Emerg. Nite Lts. Exit Signs	1	20	216	5	A	6	317	1	20	Recepts. Cubicles #122	
		Recepts. Cubicles #122	1	20	300	7	B	8	540	1	20	Recepts. Office #101	
		Recepts. Exec. Off. #100	1	20	1440	9	A	10	1200	1	20	LT. #21 Terminal Board	
		Recepts. Office #102	1	20	1440	11	B	12	400	1	20	LT. #21 Quad Recept.	
		LT. #21 Quad Recept.	1	20	1200	13	A	14	1200	1	20	LT. #21 Quad Recept.	
		LT. #21 Quad Recept.	1	20	1200	15	B	16	1200	1	20	Fire Alarm Control Panel	
		Recepts. Electrical Rm. #120	1	20	300	17	A	18	540	1	20	Recepts. RR #10 & #10	
		Recepts. Exec. Off. #103	1	20	1620	19	B	20	800	1	20	Refrigerator Kitchen #117	
		Dishwasher	1	20	600	21	A	22	1200	1	20	Cntr. Recept. Kitchen #117	
		Cntr. Recept. Kitchen #117	1	20	1200	23	B	24	1200	1	20	Cntr. Recept. Kitchen #117	
		Cntr. Recept. Kitchen #117	1	20	1200	25	A	26	300	1	20	Ice Maker	
		Microwave Kitchen #117	1	20	1200	27	B	28	720	1	20	Recepts. Office #104	
		Recepts. Kit. #117 & Vault #16	1	20	540	29	A	30	720	1	20	Recepts. Office #105	
		Recepts. Sec. Pool #15	1	20	720	31	B	32	1500	1	20	Copier	
		Recepts. Sec. Pool #15	1	20	720	33	A	34	720	1	20	Recepts. Office #101	
		Recepts. Foyer #14	1	20	720	35	B	36	800	1	20	Recepts. Office #101	
		Irrigation Controller	1	20	600	37	A	38	1200	1	20	Recepts. Office #101	
		Recepts. Canopy Columns	1	20	360	39	B	40	1000	1	20	Recepts. Foyer #14	
		Microwave Break Rm. #10	1	20	1200	41	A	42	800	1	20	Refrigerator Break Rm. #10	
		Cntr. Recept. Break Rm. #10	1	20	1200	43	B	44	1200	1	20	Cntr. Recept. Break Rm. #10	
		Cntr. Recept. Break Rm. #10	1	20	1200	45	A	46	1200	1	20	Cntr. Recept. Break Rm. #10	
		Cntr. Recept. Break Rm. #10	1	20	1200	47	B	48	720	1	20	Recepts. Conference #103	
		Recepts. Conference #103	1	20	720	49	A	50	720	1	20	Recepts. Conference #103	
		Exhaust Fans EF1 & (2) EF2	1	20	300	51	B	52	400	1	20	Generator Battery Charger	
		Generator Heater	1	20	800	53	A	54	1600	1	20	Motorized Gate	
		Fan Coil EG1	2	60	6456	55	B	56	6456	2	60	Fan Coil EG2	
		Condensing Unit GU1	2	50	6456	57	A	58	6456	2	50	Condensing Unit GU2	
		Fan Coil EG3	2	50	4070	59	B	60	4070	2	50	Condensing Unit GU3	
		Condensing Unit GU3	2	60	6456	61	A	62	4070	2	50	Condensing Unit GU4	
		Water Heater WH1	1	40	4212	63	B	64	1416	1	20	Fan Coil EG4	
		Water Heater WH2	1	40	4212	65	A	66	1416	1	20	Recepts. Conf. #103	
		Recepts. Office #106	1	20	1200	67	B	68	540	1	20	Surge Protector	
		A/V Equip. Rack Recept.	1	20	1200	69	A	70	1000	1	20	Electric Door Access	
		Space Only	1	20	1200	71	B	72	1000	1	20	Septic Pump	
		Space Only	1	20	1200	73	A	74	300	1	20	Septic Pump	
		Space Only	1	20	1200	75	B	76	1200	1	20	Septic Pump	
		Space Only	1	20	1200	77	A	78	1200	1	20	Septic Pump	
		Space Only	1	20	1200	79	B	80	1200	1	20	Septic Pump	
		Space Only	1	20	1200	81	A	82	1200	1	20	Septic Pump	
		Space Only	1	20	1200	83	B	84	1200	1	20	Septic Pump	
LOAD SUMMARY					CONN. KW	NEC DIV.			DIV. KW				
Lighting					4.0	X 125			5.0	POLES		84	
Power (A/C) (Water Heaters)					715	X 10			715	SIZE		600 AMP	
Receptacles (Per NEC 220.44 - 1st 10KVA @ 100% -					120	X 10			120	MAINS		600 AMP M.C.B.	
Remainder @ 50%					45.3	X 0.5			24.15	VOLTS		120/240V, 1P, 3W	
TOTALS					1335				110.65	MOUNTING ENCLOSURE		Surface NEMA 1	
PROJECT		Pendleton Park - Office Bldg.		NOTES		PANEL AMP		PANEL AMP		PANEL AMP		PANEL AMP	
PANEL LOCATION:		Electric Rm #120		1. Provide with GFCI type circuit breaker.		67.1		67.1		67.1		67.1	
DATE:		July 2025				NON DIV. LOADS PER PHASE:		PHASE A (KW)		PHASE B (KW)			