



212 W. Ninth Street • Tyler, Texas 75701 • (903) 597-6606

**Pendleton Office**

**Addendum #2**

Tuesday, August 12, 2025

Pendleton Office  
Addendum No. 2  
Date: August 11, 2025

To All Plan Holders:

This addendum has been issued to address questions received via CivCast and during the pre-bid meeting, and to provide the following revisions and clarifications:

**Plan Revisions:**

- Architectural:
  - Clarification/Architectural/Electrical
    - Refer to the attached Fitzpatrick Addendum No. 2 for details and plan sheets.
- Civil
  - Sheet C14 Utility Plan Revision (Septic) – Attached

**Bid Form / Allowances Clarification:**

- Revised CivCast Excel Bid Form Format has been uploaded to Civcast Separately – All bids must be submitted using this Excel format
- Allowances: Have been updated and added to the attached excel bid form.

**Notes During Pre-Bid Meeting**

- SRA will pay for Water Tap and Material Testing
- The Geotechnical Report has been provided as a separate document on Civcast.
- Team's Virtual Option will be provided for Bid Opening on August 14, 2025
- Bid Item #7 includes only site grassing materials (seed, sod, hydro-mulch) and landscape materials shown on sheets L1 and L2. All other plants and trees are to be included under Alternate Bid Item #1.
- The contractor is responsible for providing and installing the proposed generator and all related materials.
- Pre-Bid Sign Sheet has been provided as a separate document on Civcast.

**Civcast//Prebid/Email Questions:**

Is there an estimated cost for this project?

*A: Yes, the estimated construction cost for the project is \$4,150,000.00.*

The laminate and countertop materials (PL01 and CS01) are not specified. Can you please provide some guidance so that we may provide a bid?

*A: You may use Formica 4924-NG Greige Softwood & Wilsonart 9223SS Angel Falls as examples for pricing.*

Specification "074213 INSULATED-CORE METAL WALL PANELS" is missing and drawing A5-A601 calls out insulated panels with blanket insulation, but the detail doesn't really look like an insulated panel and the blanket thickness isn't indicated. Can you provide info?

*A: Section 074213 begins on PDF sheet 384/828 in the Pendleton Office - Specifications. Basis of design for the wall panel is Metl-Span LS-36. We need to provide minimum R-13 for the wall blanket insulation. For the roof, we need to achieve minimum R-19 on the batt insulation & provide thermal block at the purlins.*

Should we assume 24g for roof/wall panels?

*A: Yes, per the roof panel spec section 074113, 2.1, B, 1, and wall spec section 074213, 2.3, A, 4.*

Is there a basis of design for the projection screens?

*A: The basis of design is in the projection screen spec section 115213.*

Will the cost of material testing be by owner?

A: Yes.

The specs call for a 23' flag pole but the drawings show a 40' flag pole. Can we confirm if the flag pole will need to be 23' or 40'?

A: 40' Flag Pole.

Will this project follow prevailing wage rates and/or require certified payroll?

A: *The contractor will need to follow the applicable labor laws for wage rates but the funding does not require submission of certified payroll records to SRA.*

Specification section 16721 makes reference to tying in to / reporting to an existing fire alarm system and they also reference Edwards EST or equal by Honeywell. Is there an existing fire alarm system at the site?

A: *There is not an existing FA system to tie into, there will be no reporting component, just local annunciation.*

Will flooring material/manufactures/styles/colors be chosen before the bid date? It is hard to give an accurate bid for this section without these items being specified, or will a flooring allowance be identified?

A: *A finish legend has been provided with addendum #2.*

Specification Section 323113 calls for 1 3/4" mesh size and 3" line and 4" corner posts. Sheet CD17 calls for 2 3/8" corner and 1 7/8" line posts with 2" mesh size. Can we confirm if the sizes shown in the spec section or on sheet CD17 need to be followed? Also, is there any specific hardware and/or access controls needed for the gate?

A: *Refer to sheet CD17. The gate should have a pedestal with keypad as well as a remote for staff.*

Please verify whether the entire building is a pre-engineered metal building or is it just the canopy.

A: *The entire building is PEMB.*

Sheet A403 Detail A1 - Behind the brick veneer is 1 1/2" insulated metal wall panel to be used.

A: yes

C14 Utility Plan - Is there any work scope for the existing Park Restroom Spray Area?

A: No.

A105/A1Int. Part. Schedule/ F11 - Are these (CMU) walls to have a thickened slab beneath them?

A: *yes (Need standard detail from struct)*

B3/A501 Exterior wall mounted sign - Spec 10 14 19 limits manufacturers for the signage shown on B3/A501. Can this sign be fabricated in house instead of using the listed manufacturers?

A: *yes, but signage must meet the quality and material requirements per specifications*

Sheet CD18/Fiberglass Hot Rok Enclosures – Where are these to be used?

A: *This is for the septic panel.*

Just want to confirm that the parking lot is 6" concrete paving?

A: *Correct, the parking lot is 6" concrete pavement.*

Do you want a 24-hour tank or a 48-hour tank for the generator?

A: *48 hour tank*

Will there be a Building Permit and if so, what are the contractors' responsibilities for fees, etc.?

A: *yes building permit is required. Contractor is responsible for obtaining permit and paying associated fees.*

The specifications show both manual and motorized window shades. Please specify what type of shade and locations when you issue the Finish Schedule in the Addendum.

A: *All window shades to be manual (FA to update window schedule and spec)*

Which Item # are we to put the allowances, namely the Owner/Architects of \$200,000 and the flagpole?

A: *FA recommends bidding flagpole per specification*

What Item # are we to put Bonds, Insurance & OH&P?

A: *FA recommends adding a General Conditions section to the bid form as item #24*

Is the Terracon Geotechnical Report available?

*A: Yes, it has been provided on Civcast as a sperate document.*

Can Generac be considered as an approved equal for the Generator and ATS?

*A: Submit a formal CSI document to the Mechanical engineer*

Is the intent to follow Article 3 in the specs in respect to the qualifications? Or are we just supposed to fill out Schedule A & B in the project documents as our qualifications? We tried seeing what all needs to be uploaded to CIVCAST but it says unavailable at this moment.

*A: Civcast will be updated for bids.*

Can you confirm that for the data scope we are just providing the conduit with pull string? No other data shall be included in our bid?

*A: Correct*

On sheet C3, it shows to provide new asphalt paving from Old State Highway up to the proposed parking lot. However, on C5, it shows to mill parts of the existing asphalt and saw cut & remove another part. Can you confirm which sheet shows the correct scope of work for the asphalt?

*A: Sheet C3 illustrates the layout of the proposed entry drive, while Sheet C5 identifies the portions of the existing drive to be milled and removed.*

Can you provide any dimensions or details for the Condensing Unit pads?

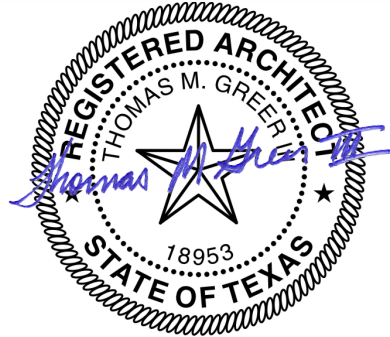
*A: Provide 4" concrete slab with 1'-0" clearance around condensing unit. Refer to civil concrete sidewalk details for reinforcing.*

Bidders are required to acknowledge receipt of this addendum in their bid submission on Civcast.

END OF ADDENDUM

## ADDENDUM #02

**Date:** 08/08/25  
**Client:** SRA  
**Project:** Pendleton Park  
Hemphill, Texas  
**Project No.:** 21.095



To: All Bidders of Record

Acknowledge receipt of the Addendum by inserting its number on your construction proposal. This Addendum shall form a part of the Contract Documents and modifies them as follows:

### CLARIFICATION

ITEM 1.01. CLARIFICATION Substitution request for metal panel accepted. 1.5" HR3-W by All Weather Insulated Panels accepted in lieu of LS-36. R-value of 12.3. Finish as selected by Architect from manufacturer's standard colors.

### SPECIFICATIONS

ITEM 1.02. SECTION 01 21 00 – REVISION Allowances revised.

ITEM 1.03. SECTION 12 24 13 – REVISION Section revised. All roller shades to be manual shades.

### ARCHITECTURAL

ITEM 1.04. A201 – REVISION Finish legend added with finish selections.

ITEM 1.05. A301 – REVISION Gyp ceiling paint revised.

ITEM 1.06. A403 – REVISION Note added to window schedule for manual roller shade location clarification. Note added to window details for clarification. Metal panel is insulated as specified.

ITEM 1.07. A701 – REVISION Accent paint finish revised shown on interior elevations.

### ELECTRICAL NARRATIVE (DRAWINGS TO FOLLOW IN ADDENDUM #3)

ITEM 1.08. REVISION Conduit for 110" display moved to accessible location.

ITEM 1.09. ADDITION Two floor boxes (A/V input) added in conference room with conduit to storage room.

ITEM 1.10. ADDITION Provide power and data for four cameras in conference room. Single gang box to ¾" conduit stub at accessible location.

ITEM 1.11. ADDITION Audio/Visual rack added in storage room. 2 x 20 amp dedicated circuits.

ITEM 1.12. CLARIFICATION For floor boxes, 1" stub ups are sufficient.

## SECTION 012100 - ALLOWANCES

### PART 1 - GENERAL

#### 1.1 RELATED DOCUMENTS

- A. Drawings and general provisions of the Contract, including General and Supplementary Conditions and other Division 01 Specification Sections, apply to this Section.

#### 1.2 SUMMARY

- A. Section includes administrative and procedural requirements governing allowances.
  - 1. Certain items are specified in the Contract Documents by allowances. Allowances have been established in lieu of additional requirements and to defer selection of actual materials and equipment to a later date when direction will be provided to Contractor. If necessary, additional requirements will be issued by Bulletin.
- B. Types of allowances include the following:
  - 1. Lump-sum allowances.
  - 2. Unit-cost allowances.
  - 3. Quantity allowances.
  - 4. Contingency allowances.
  - 5. Testing and inspecting allowances.
- C. Related Requirements:
  - 1. Divisions 02 through 33 Sections for items of Work covered by allowances.

#### 1.3 SELECTION AND PURCHASE

- A. At the earliest practical date after award of the Contract, advise Architect of the date when final selection and purchase of each product or system described by an allowance must be completed to avoid delaying the Work.
- B. At Architect's request, obtain proposals for each allowance for use in making final selections. Include recommendations that are relevant to performing the Work.
- C. Purchase products and systems selected by Architect from the designated supplier.

#### 1.4 INFORMATIONAL SUBMITTALS

- A. Submit invoices or delivery slips to show actual quantities of materials delivered to the site for use in fulfillment of each allowance.
- B. Coordinate and process submittals for allowance items in same manner as for other portions of the Work.

## 1.5 COORDINATION

- A. Coordinate allowance items with other portions of the Work. Furnish templates as required to coordinate installation.

## 1.6 LUMP-SUM ALLOWANCES

- A. Allowance shall include cost to Contractor of specific products and materials ordered by Owner or selected by Architect under allowance and shall include taxes, freight, and delivery to Project site.
- B. Unless otherwise indicated, Contractor's costs for receiving and handling at Project site, labor, installation, overhead and profit, and similar costs related to products and materials ordered by Owner selected by Architect under allowance shall be included as part of the Contract Sum and not part of the allowance.
- C. Unused Materials: Return unused materials purchased under an allowance to manufacturer or supplier for credit to Owner, after installation has been completed and accepted.
  - 1. If requested by Architect, retain and prepare unused material for storage by Owner. Deliver unused material to Owner's storage space as directed.
- D. **CHANGE ORDER FEES DO NOT APPLY TO COST PROPOSALS ISSUED FOR EXPENDITURE OF ALLOWANCE MONEY.**

## 1.7 CONTINGENCY ALLOWANCES

- A. Use the contingency allowance only as directed by Architect for Owner's purposes and only by Cost Proposals that indicate amounts to be charged to the allowance.
- B. Contractor's overhead, profit, and related costs for products and equipment ordered by Owner under the contingency allowance are included in the allowance and are not part of the Contract Sum. These costs include delivery, installation, taxes, insurance, equipment rental, and similar costs.
- C. Cost Proposals authorizing use of funds from the contingency allowance will include Contractor's related costs and reasonable overhead and profit margins.
- D. At Project closeout, credit unused amounts remaining in the contingency allowance to Owner by Cost Proposal.
- E. **CHANGE ORDER FEES DO NOT APPLY TO COST PROPOSALS ISSUED FOR EXPENDITURE OF ALLOWANCE MONEY.**

## 1.8 TESTING AND INSPECTING ALLOWANCES

- A. Testing and inspecting allowances include the cost of engaging testing agencies, actual tests and inspections, and reporting results.
- B. The allowance does not include incidental labor required to assist the testing agency or costs for retesting if previous tests and inspections result in failure. The cost for incidental labor to assist the testing agency shall be included in the Contract Sum.

- C. Costs of services not required by the Contract Documents are not included in the allowance.
- D. At Project closeout, credit unused amounts remaining in the testing and inspecting allowance to Owner by Cost Proposal.
- E. **CHANGE ORDER FEES DO NOT APPLY TO COST PROPOSALS ISSUED FOR EXPENDITURE OF ALLOWANCE MONEY.**

#### 1.9 ADJUSTMENT OF ALLOWANCES

- A. Allowance Adjustment: To adjust allowance amounts, prepare a Cost Proposal proposal based on the difference between purchase amount and the allowance, multiplied by final measurement of work-in-place where applicable. If applicable, include reasonable allowances for cutting losses, tolerances, mixing wastes, normal product imperfections, and similar margins.
  - 1. Include installation costs in purchase amount only where indicated as part of the allowance.
  - 2. If requested, prepare explanation and documentation to substantiate distribution of overhead costs and other margins claimed.
  - 3. Submit substantiation of a change in scope of work, if any, claimed in Cost Proposals related to unit-cost allowances.
  - 4. Owner reserves the right to establish the quantity of work-in-place by independent quantity survey, measure, or count.
- B. Submit claims for increased costs because of a change in scope or nature of the allowance described in the Contract Documents, whether for the purchase order amount or Contractor's handling, labor, installation, overhead, and profit.
  - 1. Do not include Contractor's or subcontractor's indirect expense in the Cost Proposal cost amount unless it is clearly shown that the nature or extent of work has changed from what could have been foreseen from information in the Contract Documents.
  - 2. No change to Contractor's indirect expense is permitted for selection of higher- or lower-priced materials or systems of the same scope and nature as originally indicated.

#### PART 2 - PRODUCTS (Not Used)

#### PART 3 - EXECUTION

##### 3.1 EXAMINATION

- A. Examine products covered by an allowance promptly on delivery for damage or defects. Return damaged or defective products to manufacturer for replacement.

##### 3.2 PREPARATION

- A. Coordinate materials and their installation for each allowance with related materials and installations to ensure that each allowance item is completely integrated and interfaced with related work.

### 3.3 SCHEDULE OF ALLOWANCES

- A. Allowance No. 1: Lump-Sum Allowance: Include the sum of **\$91,000** for finish door hardware
  - 1. This allowance includes purchasing hardware materials, only.
  - 2. Taxes are not included.
  - 3. This allowance includes hardware for aluminum storefront and hollow metal entrances with the exclusion of keypads by others.
  - 4. This figure allows for standard duty hardware with a Bronze finish.
  - 5. Contact: Ryan Sword (903) 561-1921
- B. Allowance No. 2: HVAC Testing and Balance Allowance: **\$53,500**
  - 1. Includes material and labor for testing and balancing HVAC systems at job completion.
- C. Allowance No. 3: Select Fill Allowance: **\$107,000**
  - 1. Includes materials for select fill if required and export of poor materials.
- D. Allowance No. 4: Interior Signage Allowance: Include a sum of **\$27,000** to provide an interior room identification. Coordinate with owner and architect for locations of desired signage.
  - 1. Includes material and labor for interior room and directional signage.
- E. Allowance No. 5: Access Controls/Security Allowance: Include the sum of **\$40,000**
  - 1. Includes material and labor for changes or additions to systems as directed by Owner.

END OF SECTION 012100



## SECTION 122413 - ROLLER WINDOW SHADES

### PART 1 - GENERAL

#### 1.1 RELATED DOCUMENTS

- A. Drawings and general provisions of the Contract, including General and Supplementary Conditions and Division 01 Specification Sections, apply to this Section.

#### 1.2 SUMMARY

- A. Section Includes:
  - 1. Manual-operated roller shades with single rollers.
- B. Related Requirements:
  - 1. Section 061053 "Miscellaneous Rough Carpentry" for wood blocking and grounds for mounting roller shades and accessories.
  - 2. Section 079200 "Joint Sealants" for sealing the perimeters of installation accessories for light-blocking shades with a sealant.

#### 1.3 ACTION SUBMITTALS

- A. Product Data: For each type of product.
  - 1. Include styles, material descriptions, construction details, dimensions of individual components and profiles, features, finishes, and operating instructions for roller shades.
- B. Shop Drawings: Show fabrication and installation details for roller shades, including shadeband materials, their orientation to rollers, and their seam and batten locations.
  - 1. Motor-Operated Shades: Include details of installation and diagrams for power, signal, and control wiring.
- C. Samples: For each exposed product and for each color and texture specified, 10 inches (250 mm) long.
- D. Samples for Initial Selection: For each type and color of shadeband material.
  - 1. Include Samples of accessories involving color selection.
- E. Samples for Verification: For each type of roller shade.
  - 1. Shadeband Material: Not less than 3 inches (76 mm) square. Mark inside face of material if applicable.
  - 2. Roller Shade: Full-size operating unit, not less than 16 inches (400 mm) wide by 36 inches (900 mm) long for each type of roller shade indicated.
  - 3. Installation Accessories: Full-size unit, not less than 10 inches (250 mm) long.
- F. Roller-Shade Schedule: Use same designations indicated on Drawings.

#### 1.4 INFORMATIONAL SUBMITTALS

- A. Qualification Data: For Installer.
- B. Product Certificates: For each type of shadeband material, signed by product manufacturer.
- C. Product Test Reports: For each type of shadeband material, for tests performed by manufacturer and witnessed by a qualified testing agency or a qualified testing agency.

#### 1.5 CLOSEOUT SUBMITTALS

- A. Maintenance Data: For roller shades to include in maintenance manuals.

#### 1.6 MAINTENANCE MATERIAL SUBMITTALS

- A. Furnish extra materials that match products installed and that are packaged with protective covering for storage and identified with labels describing contents.
  - 1. Roller Shades: Full-size units equal to 5 percent of quantity installed for each size, color, and shadeband material indicated, but no fewer than two units.

#### 1.7 QUALITY ASSURANCE

- A. Installer Qualifications: Fabricator of products.
- B. Mockups: Build mockups to verify selections made under Sample submittals, to demonstrate aesthetic effects, and to set quality standards for materials and execution.
  - 1. Approval of mockups does not constitute approval of deviations from the Contract Documents contained in mockups unless Architect specifically approves such deviations in writing.
  - 2. Subject to compliance with requirements, approved mockups may become part of the completed Work if undisturbed at time of Substantial Completion.

#### 1.8 DELIVERY, STORAGE, AND HANDLING

- A. Deliver roller shades in factory packages, marked with manufacturer, product name, and location of installation using same designations indicated on Drawings.

#### 1.9 FIELD CONDITIONS

- A. Environmental Limitations: Do not install roller shades until construction and finish work in spaces, including painting, is complete and dry and ambient temperature and humidity conditions are maintained at the levels indicated for Project when occupied for its intended use.
- B. Field Measurements: Where roller shades are indicated to fit to other construction, verify dimensions of other construction by field measurements before fabrication and indicate measurements on Shop Drawings. Allow clearances for operating hardware of operable glazed units through entire operating range. Notify Architect of installation conditions that vary from Drawings. Coordinate fabrication schedule with construction progress to avoid delaying the Work.

## PART 2 - PRODUCTS

### 2.1 MANUFACTURERS

- A. Basis-of-Design Product: Subject to compliance with requirements, provide a product by one of the following:
1. BTX Window Automation, Inc.
  2. DFB Sales.
  3. Draper Inc.
  4. Hunter Douglas Contract.
  5. Lutron Electronics Co., Inc.
  6. MechoShade Systems, Inc.
  7. Nysan Solar Control Inc.; Hunter Douglas Company.
  8. OEM Shades Inc.
  9. Shade Techniques, LLC.
  10. Silent Gliss USA, Inc.
  11. SM Automatic, Inc.
- B. Source Limitations: Obtain roller shades from single source from single manufacturer.

### 2.2 MANUALLY OPERATED SHADES WITH SINGLE ROLLERS

- A. Chain-and-Clutch Operating Mechanisms: With continuous-loop bead chain and clutch that stops shade movement when bead chain is released; permanently adjusted and lubricated.
1. Bead Chains: Manufacturer's standard.
    - a. Loop Length: Full length of roller shade.
    - b. Limit Stops: Provide upper and lower ball stops.
    - c. Chain-Retainer Type: Chain tensioner, jamb mounted.
  2. Spring Lift-Assist Mechanisms: Manufacturer's standard for balancing roller-shade weight and lifting heavy roller shades.
    - a. Provide for shadebands that weigh more than 10 lb (4.5 kg) or for shades as recommended by manufacturer, whichever criteria are more stringent.
- B. Rollers: Corrosion-resistant steel or extruded-aluminum tubes of diameters and wall thicknesses required to accommodate operating mechanisms and weights and widths of shadebands indicated without deflection. Provide with permanently lubricated drive-end assemblies and idle-end assemblies designed to facilitate removal of shadebands for service.
1. Roller Drive-End Location: Right side of inside face of shade
  2. Direction of Shadeband Roll: Regular, from back of roller.
  3. Shadeband-to-Roller Attachment: Manufacturer's standard method
- C. Mounting Hardware: Brackets or endcaps, corrosion resistant and compatible with roller assembly, operating mechanism, installation accessories, and mounting location and conditions indicated.
- D. Roller-Coupling Assemblies: Coordinated with operating mechanism and designed to join up to three inline rollers into a multiband shade that is operated by one roller drive-end assembly.

E. Shadebands:

1. Shadeband Material: Light-filtering fabric
2. Shadeband Bottom (Hem) Bar: Steel or extruded aluminum.
  - a. Type: Enclosed in sealed pocket of shadeband material
  - b. Color and Finish: As selected by Architect from manufacturer's full range.

F. Installation Accessories:

1. Front Fascia: Aluminum extrusion that conceals front and underside of roller and operating mechanism and attaches to roller endcaps without exposed fasteners.
  - a. Shape: L-shaped.
  - b. Height: Manufacturer's standard height required to conceal roller and shadeband when shade is fully open, but not less than 4 inches (102 mm)
2. Exposed Headbox: Rectangular, extruded-aluminum enclosure including front fascia, top and back covers, endcaps, and removable bottom closure.
  - a. Height: Manufacturer's standard height required to enclose roller and shadeband when shade is fully open, but not less than 4 inches (102 mm).
3. Endcap Covers: To cover exposed endcaps.
4. Recessed Shade Pocket: Rectangular, extruded-aluminum enclosure designed for recessed ceiling installation; with front, top, and back formed as one piece, end plates, and removable bottom closure panel.
  - a. Height: Manufacturer's standard height required to enclose roller and shadeband when shade is fully open, but not less than 4 inches (102 mm).
  - b. Provide pocket with lip at lower edge to support acoustical ceiling panel.
5. Closure Panel and Wall Clip: Removable aluminum panel designed for installation at bottom of site-constructed ceiling recess or pocket and for snap-in attachment to wall clip without fasteners.
  - a. Closure-Panel Width: 2 inches (51 mm)

## 2.3 SHADEBAND MATERIALS

- A. Shadeband Material Flame-Resistance Rating: Comply with NFPA 701. Testing by a qualified testing agency. Identify products with appropriate markings of applicable testing agency
- B. Light-Filtering Fabric: Woven fabric, stain and fade resistant.
1. Basis of Design: Mermot E-Screen
  2. Location: As indicated on window schedule notes.
  3. Source: Roller-shade manufacturer.
  4. Roll Width: Width of window
  5. Orientation on Shadeband: Up the bolt
  6. Openness Factor: 5 percent.
  7. Color: As selected by Architect from manufacturer's full range.

## 2.4 ROLLER-SHADE FABRICATION

- A. Product Safety Standard: Fabricate roller shades to comply with WCMA A 100.1, including requirements for flexible, chain-loop devices; lead content of components; and warning labels.
- B. Unit Sizes: Fabricate units in sizes to fill window and other openings as follows, measured at 74 deg F (23 deg C):
  - 1. Between (Inside) Jamb Installation: Width equal to jamb-to-jamb dimension of opening in which shade is installed less 1/4 inch (6 mm) per side or 1/2-inch (13-mm) total, plus or minus 1/8 inch (3.1 mm). Length equal to head-to-sill or -floor dimension of opening in which shade is installed less 1/4 inch (6 mm), plus or minus 1/8 inch (3.1 mm).
  - 2. Outside of Jamb Installation: Width and length as indicated, with terminations between shades of end-to-end installations at centerlines of mullion or other defined vertical separations between openings.
- C. Shadeband Fabrication: Fabricate shadebands without battens or seams to extent possible except as follows:
  - 1. Vertical Shades: Where width-to-length ratio of shadeband is equal to or greater than 1:4 provide battens and seams at uniform spacings along shadeband length to ensure shadeband tracking and alignment through its full range of movement without distortion of the material.
  - 2. Railroaded Materials: Railroad material where material roll width is less than the required width of shadeband and where indicated. Provide battens and seams as required by railroaded material to produce shadebands with full roll-width panel(s) plus, if required, one partial roll-width panel located at top of shadeband.

## PART 3 - EXECUTION

### 3.1 EXAMINATION

- A. Examine substrates, areas, and conditions, with Installer present, for compliance with requirements for installation tolerances, operational clearances, and other conditions affecting performance of the Work.
- B. Proceed with installation only after unsatisfactory conditions have been corrected.

### 3.2 ROLLER-SHADE INSTALLATION

- A. Install roller shades level, plumb, and aligned with adjacent units according to manufacturer's written instructions.
  - 1. Opaque Shadebands: Located so shadeband is not closer than 2 inches (51 mm) to interior face of glass. Allow clearances for window operation hardware.

### 3.3 ADJUSTING

- A. Adjust and balance roller shades to operate smoothly, easily, safely, and free from binding or malfunction throughout entire operational range.

### 3.4 CLEANING AND PROTECTION

- A. Clean roller-shade surfaces after installation, according to manufacturer's written instructions.
- B. Provide final protection and maintain conditions, in a manner acceptable to manufacturer and Installer, that ensure that roller shades are without damage or deterioration at time of Substantial Completion.
- C. Replace damaged roller shades that cannot be repaired, in a manner approved by Architect, before time of Substantial Completion.

### 3.5 DEMONSTRATION

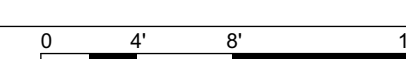
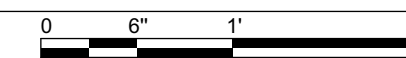
- A. Engage a factory-authorized service representative to train Owner's maintenance personnel to adjust, operate, and maintain motor-operated roller shades.

END OF SECTION 122413

**D4 FINISH LEGEND**



71201



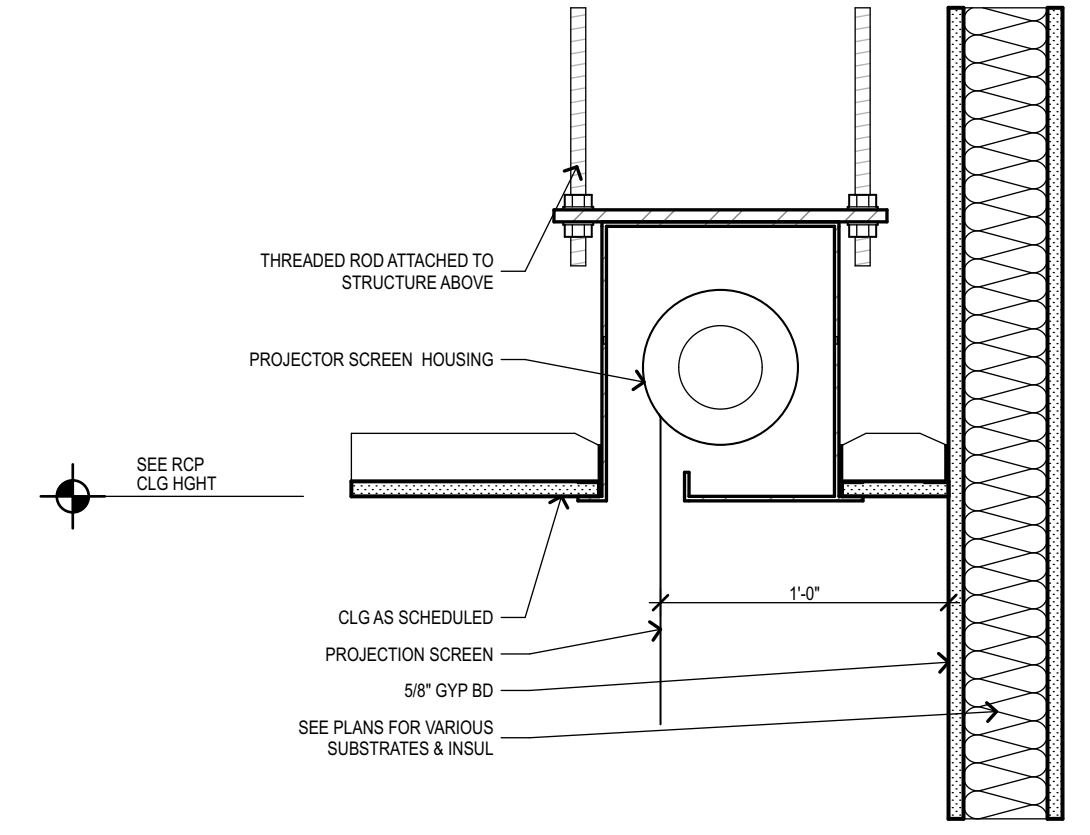


D1

A301

RECESSED PROJECTION SCREEN

SCALE: 1 1/2" = 1'-0"



NOTE: WD FRAMING SIMILAR

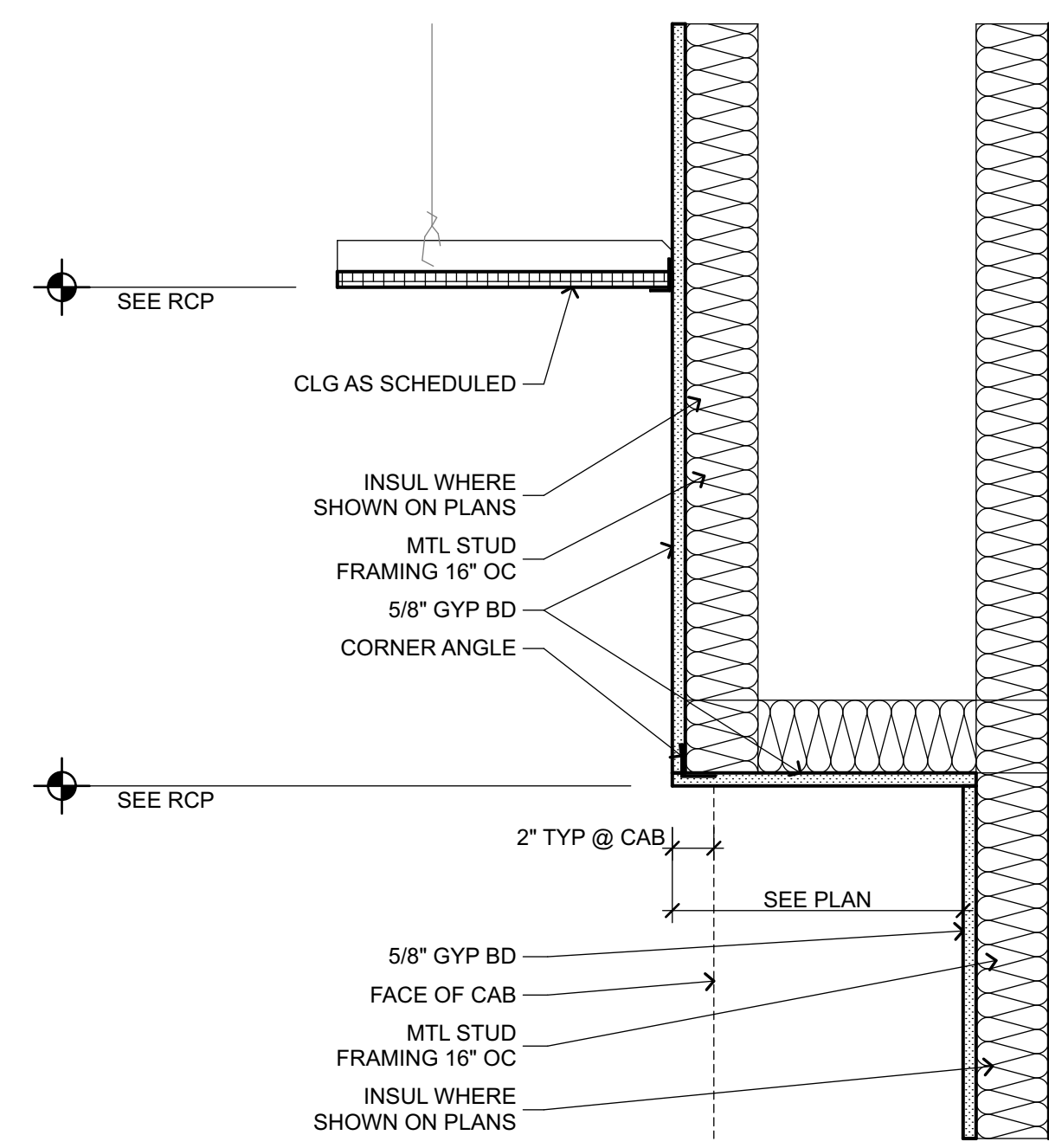
0 6" 12" 18"

B1

A301

FURR DOWN

SCALE: 1 1/2" = 1'-0"



NOTE: WD FRAMING SIMILAR

PLAN NORTH

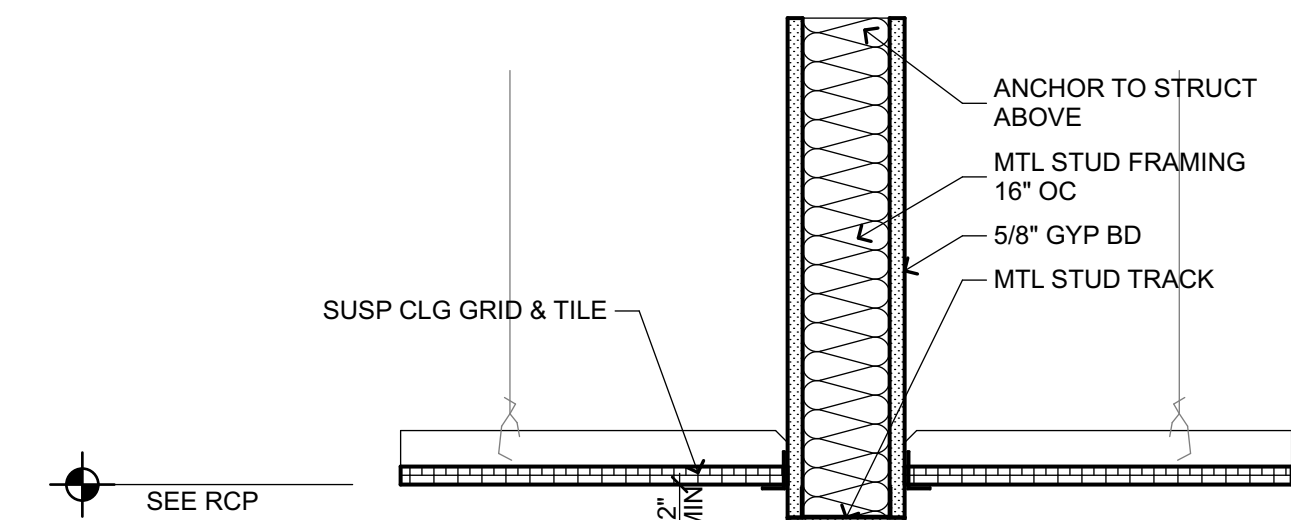
0 6" 12" 18"

A1

A301

BULKHEAD @ ACT

SCALE: 1 1/2" = 1'-0"



NOTE: WD FRAMING SIMILAR

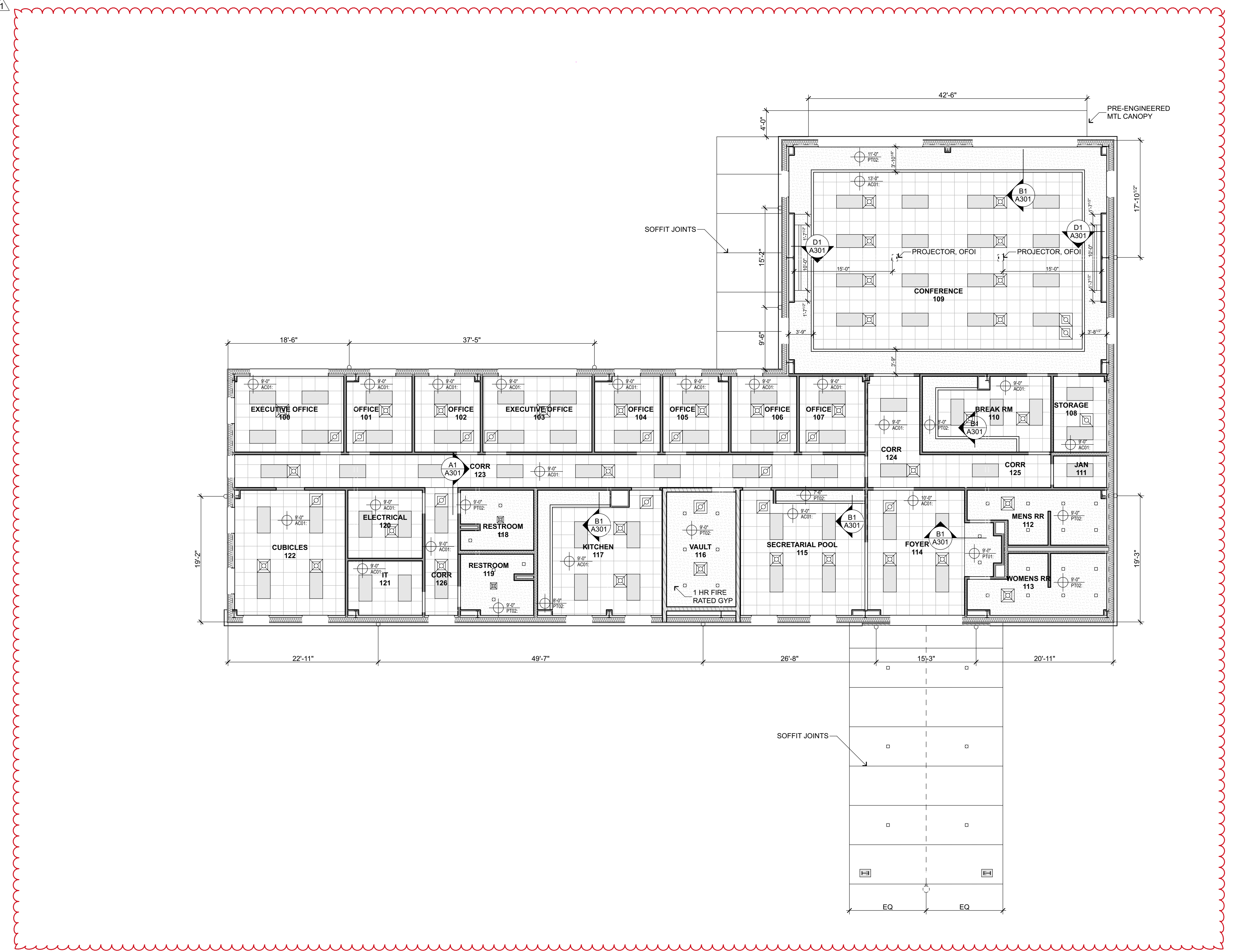
0 6" 12" 18"

A3

A301

REFLECTED CEILING PLAN

SCALE: 1/8" = 1'-0"



PLAN NORTH

0 4' 8' 16'

fitzpatrick


ARCHITECTS

110 N COLLIER AVE  
SUITE 100  
TYLER, TEXAS 75702  
903.322.0728  
info@fitzpatrickarchitects.com

MHS

PENDLETON OFFICE

HEMPHILL, TX



IF THE ABOVE DIMENSION DOES NOT MEASURE ONE INCH (1") EXACTLY, THIS DRAWING HAS BEEN ENLARGED OR REDUCED, AFFECTING ALL LABELED SCALES.

PROJECT MANAGER  
JOSHUA STEED

SHEET REVISION HISTORY

NO.	DESCRIPTION	DATE
1	ADDENDUM 02	8/8/25

JOB NUMBER  
21.095

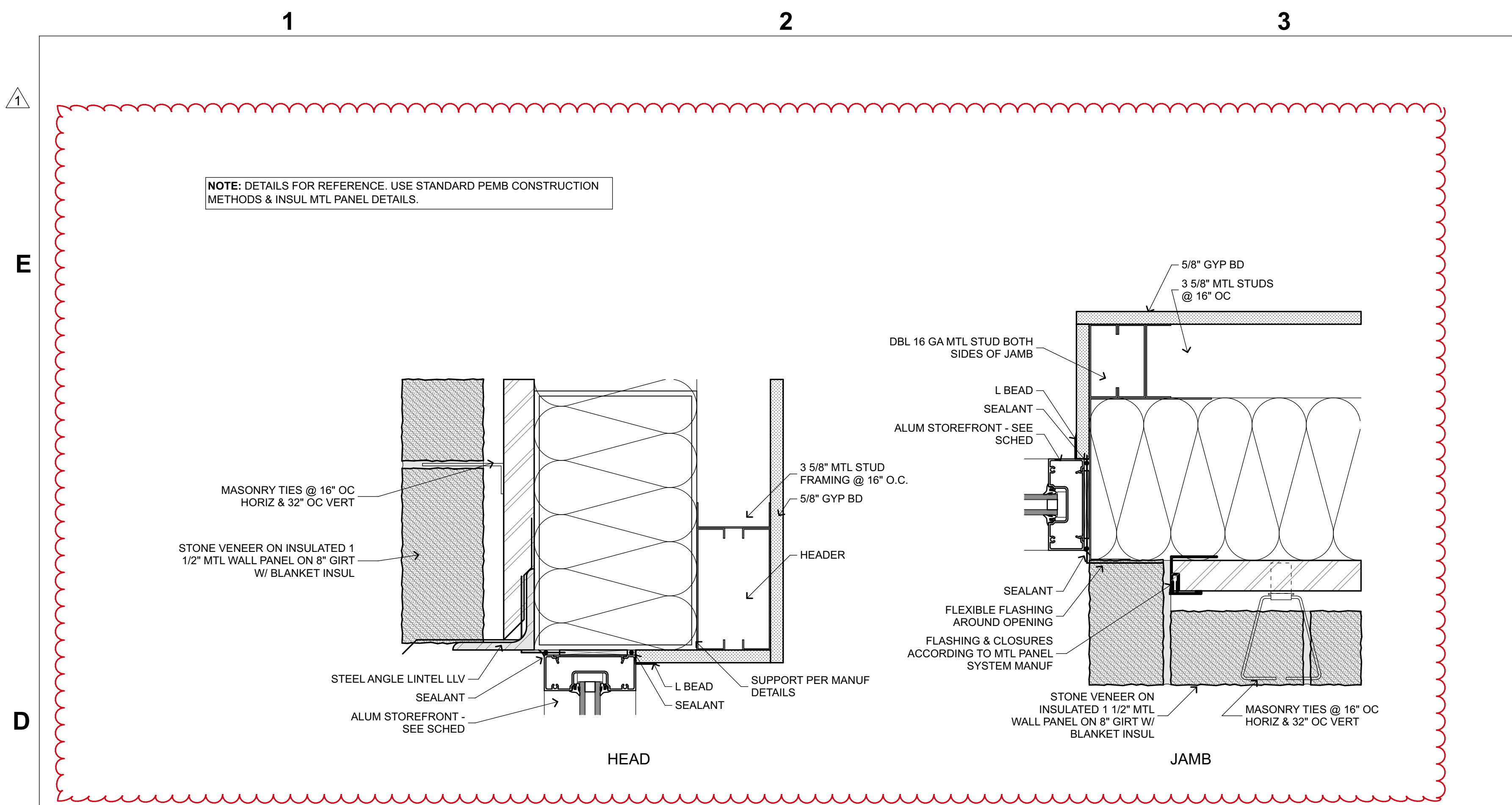
DATE  
7/17/25

SHEET NUMBER  
A301

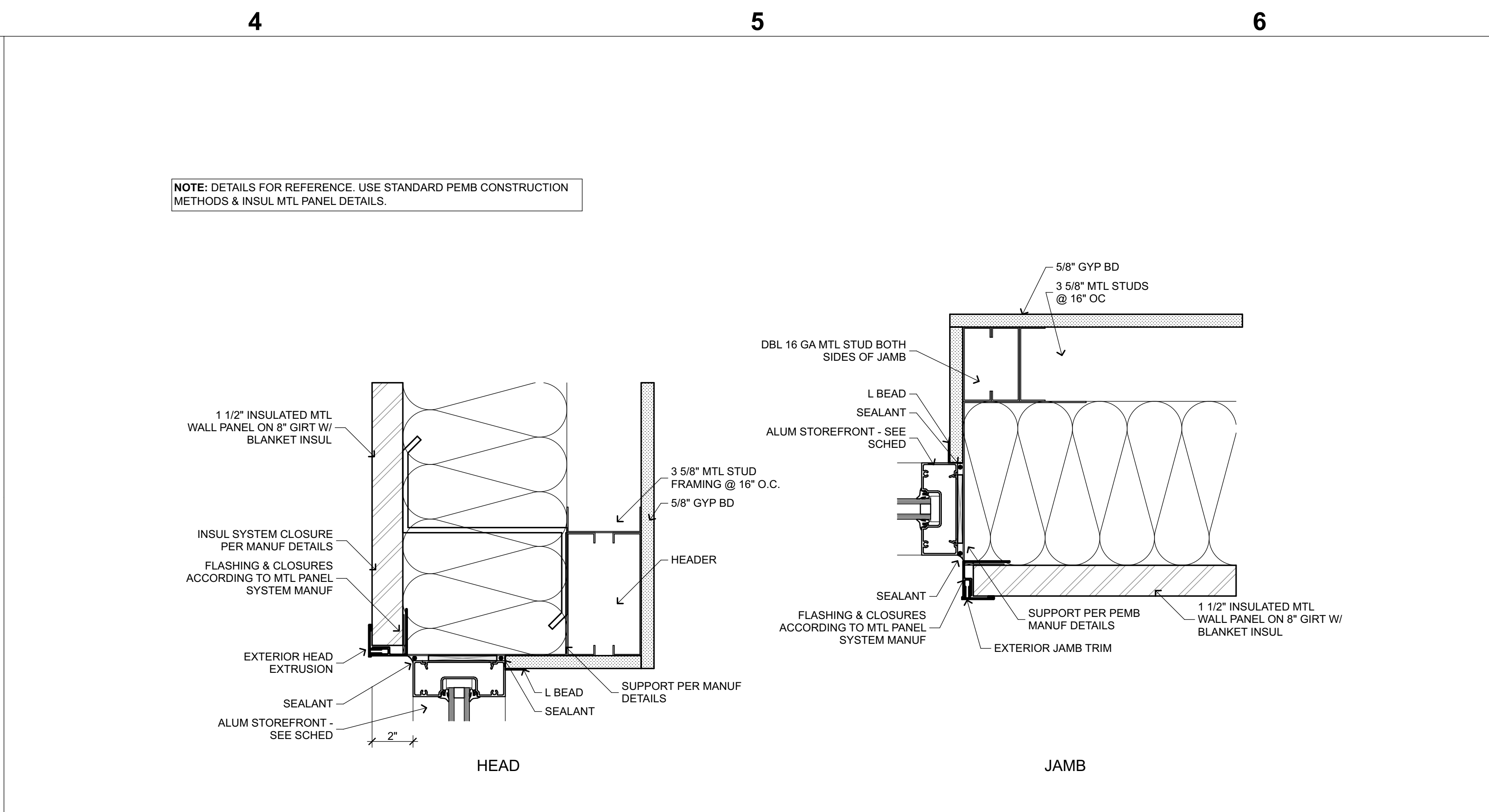
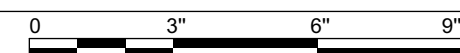
RCP

© 2025

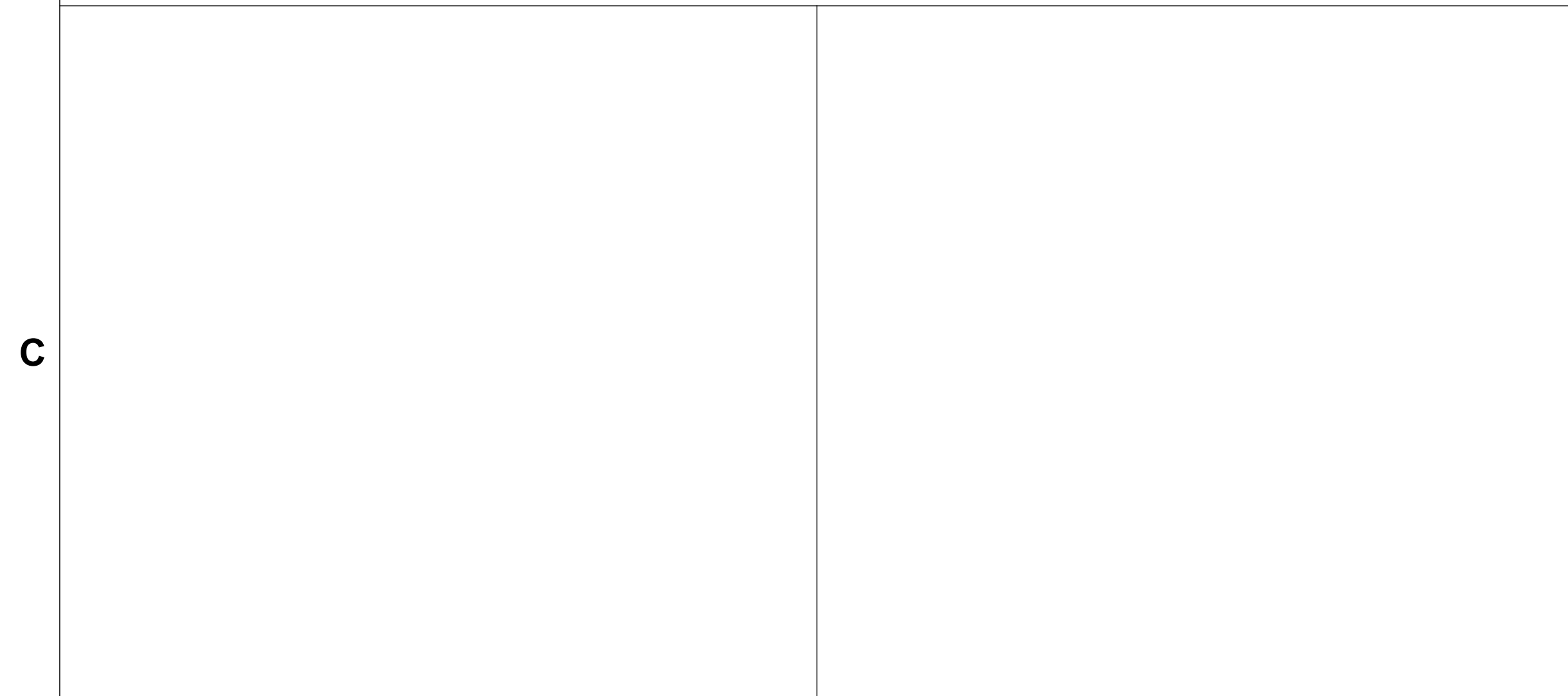
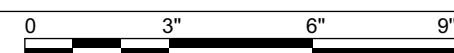




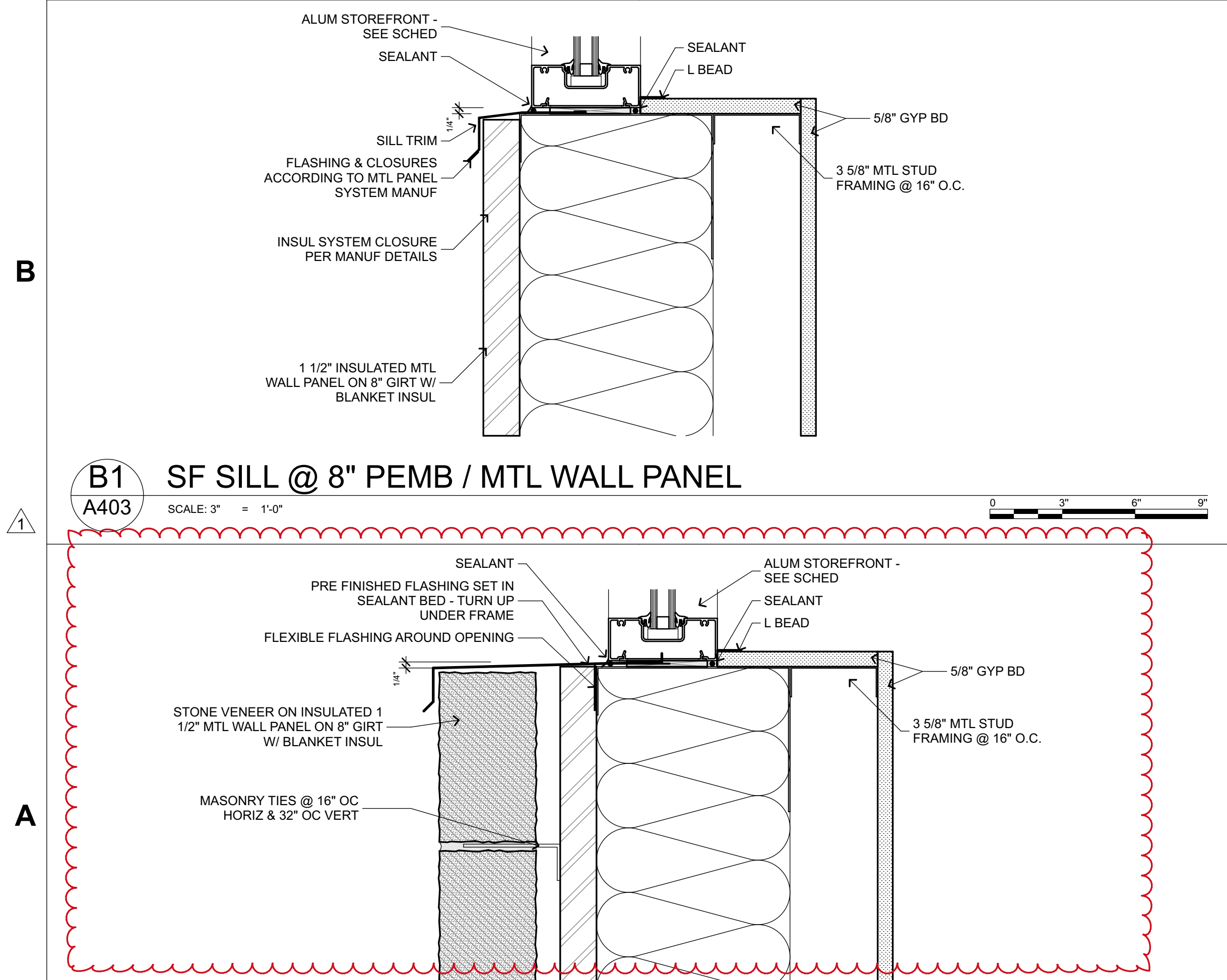
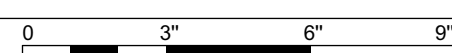
D1 SF HEAD/JAMB @ 8" PEMB / THIN STONE  
A403 SCALE: 3" = 1'-0"



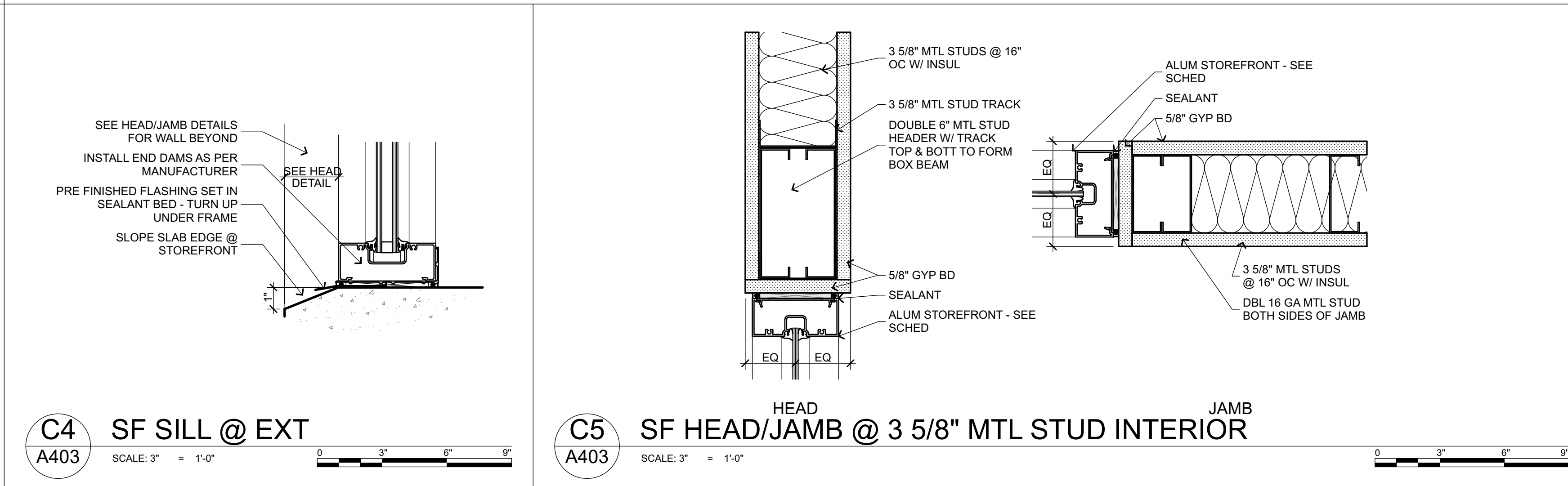
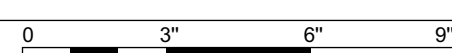
D4 SF HEAD/JAMB @ 8" PEMB / MTL WALL PANEL  
A403 SCALE: 3" = 1'-0"



B1 SF SILL @ 8" PEMB / MTL WALL PANEL  
A403 SCALE: 3" = 1'-0"



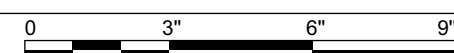
A1 SF SILL @ 8" PEMB / THIN STONE  
A403 SCALE: 3" = 1'-0"



C4 SF SILL @ EXT  
A403 SCALE: 3" = 1'-0"



C5 SF HEAD/JAMB @ 3 5/8" MTL STUD INTERIOR  
A403 SCALE: 3" = 1'-0"



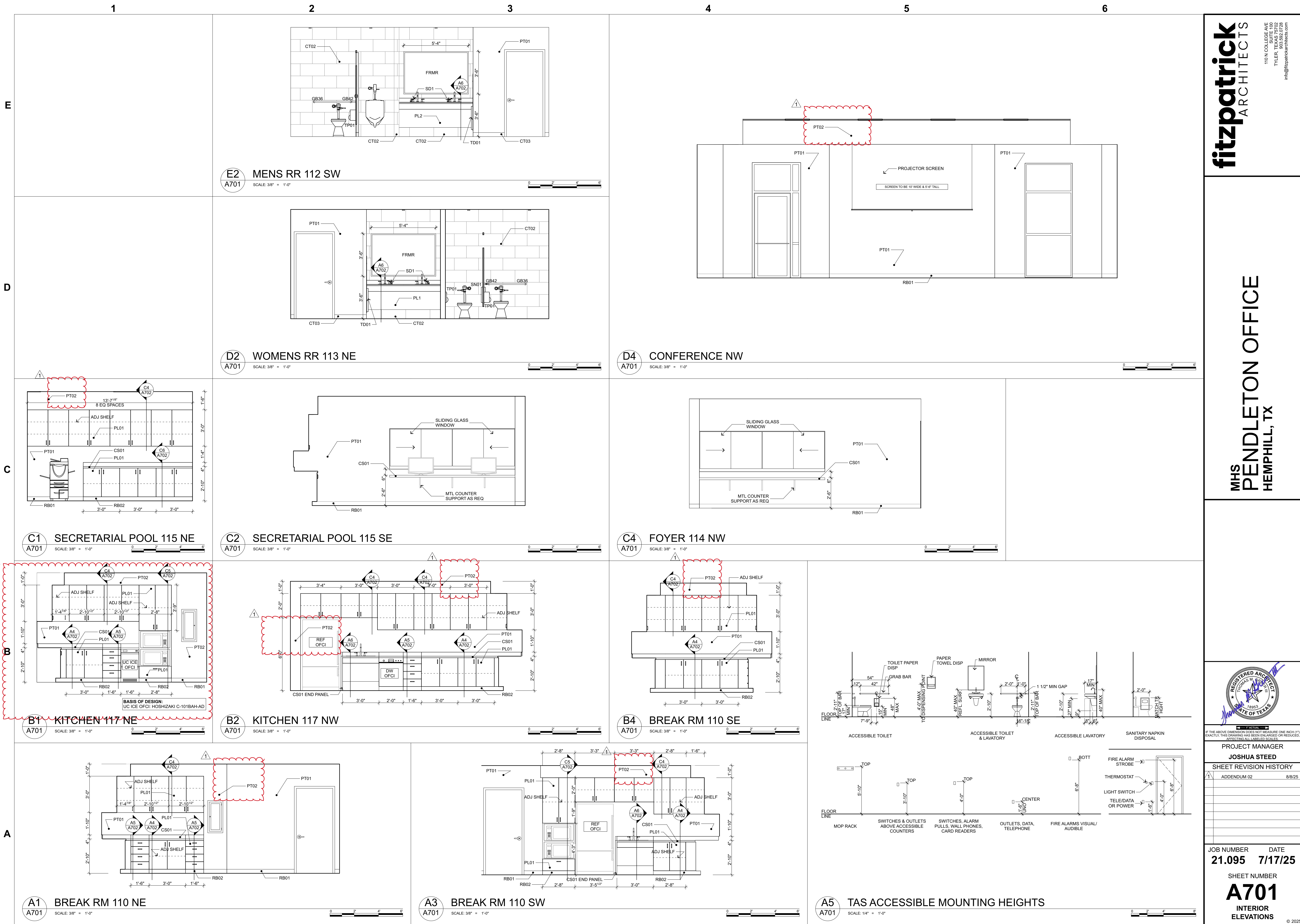
1

WINDOW SCHEDULE						
WINDOW TAG	A	B	C	D	E	F
GLAZING	IG-1	IG-1	IG-1	IG-1	MG-2	IG-1
HEAD/JAMB	D4/A403	D4/A403	D4/A403	D4/A403	A2/A702	D4/A403
SILL	A1/A403	C4/A403	C4/A403	C4/A403	A2/A702	B1/A403
NOTES	1, 2	1, 2	1, 2	1, 2		1, 2
OPENING VIEW						
	4'-0" x 5'-0"	4'-0" x 9'-6"	16'-0" x 9'-6"	12'-0" x 8'-6"	5'-2" x 3'-4"	4'-0" x 5'-0"
NOMINAL SIZE	4'-0" x 5'-0"	4'-0" x 9'-6"	16'-0" x 9'-6"	12'-0" x 8'-6"	5'-2" x 3'-4"	4'-0" x 5'-0"
SILL HEIGHT	3'-6"	0"	0"	0"	3'-0"	3'-6"

NOTES:  
1. HEAD/JAMB/SILL DETAILS PER PEMB MANUF  
2. MANUAL ROLLER SHADE

A3 WINDOW SCHEDULE  
A403






**fitzpatrick**  
ARCHITECTS

110 N COLLEGE AVE  
SUITE 100  
TYLER, TEXAS 75702  
903.332.0728  
info@fitzpatrickarchitects.com

MHS  
PENDLETON OFFICE  
HEMPHILL, TX



REGISTERED ARCHITECT  
JOSHUA STEED  
NO. 10855  
STATE OF TEXAS

PROJECT MANAGER  
**JOSHUA STEED**

SHEET REVISION HISTORY	
1	ADDENDUM 02 8/8/25

JOB NUMBER  
**21.095**

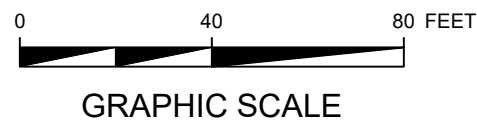
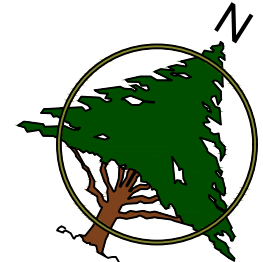
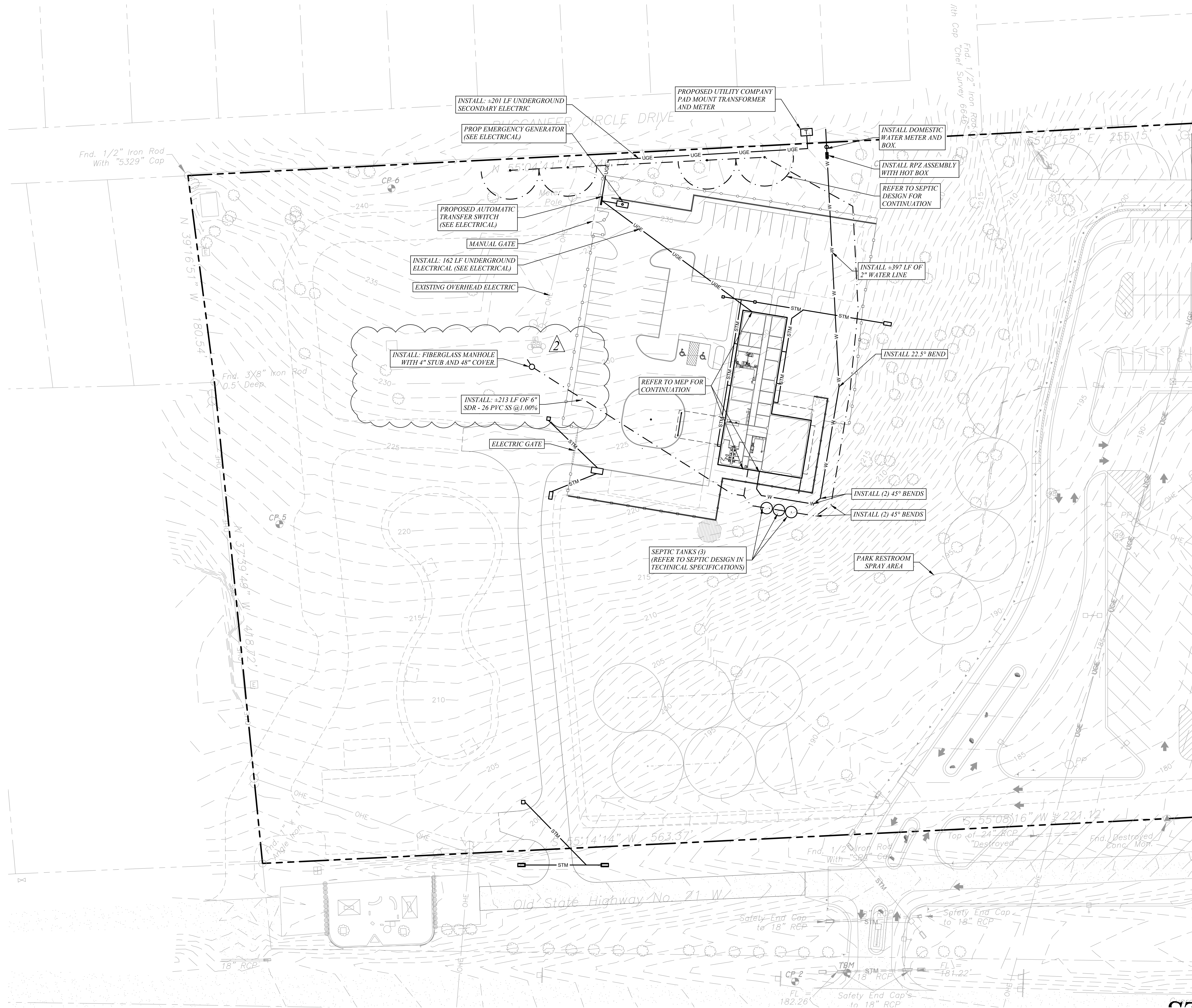
DATE  
**7/17/25**

SHEET NUMBER  
**A701**

INTERIOR  
ELEVATIONS

© 2025



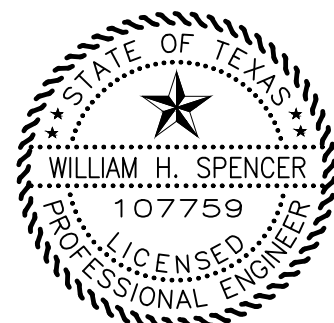
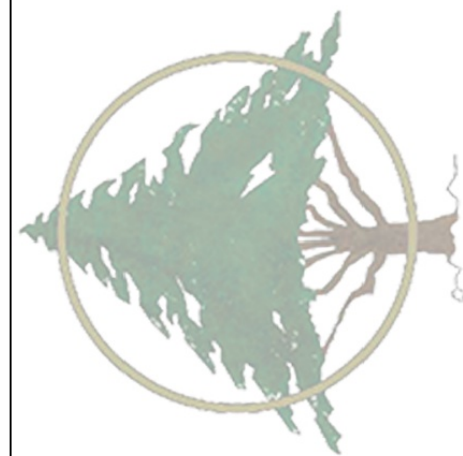


LEGEND

---	PROPERTY LINE
---	STM
---	W
---	UGE
---	SEPTIC LINE

NOTES:

1. SEPTIC PLAN TO BE PREPARED BY PATRIOT SEPTIC DESIGNS, LLC.
2. DEEP EAST TEXAS TO STAKE ELECTRICAL TIE-IN TO THE PROPOSED COMPANY METER.



6/27/2025

IF THE ABOVE DIMENSION DOES NOT MEASURE ONE INCH (1") EXACTLY, THIS DRAWING HAS BEEN ENLARGED OR REDUCED, AFFECTING ALL LABELED SCALES.

PROJECT MANAGER

WILLIAM SPENCER

SHEET REVISION HISTORY

ADDENDUM #2 (SEPTIC)

JOB NUMBER DATE

22-075 8/11/2025

SHEET NUMBER

UTILITY PLAN

C14