
SABINE RIVER AUTHORITY OF TEXAS

TO: INTERESTED PARTIES
FROM: ENVIRONMENTAL SERVICES DIVISION
RE: SEPTEMBER 2023 MONTHLY WATER QUALITY REPORT

The Environmental Services Field Offices conducted water quality monitoring in the Sabine Basin from September 11th through the 14th. The results of field monitoring are presented in this report¹ and additional data can be found using the Texas Commission on Environmental Quality (TCEQ) [Clean Rivers Program Data Tool](#).

Sabine Basin Tidal (Including Tributaries)

Weather – Air temperatures in the tidal basin were hot with highs in the upper 80s to low 100s. Low temperatures were in the low 60s to mid 70s. The tidal stations received 0.08 inches of rainfall in the seven days prior to the sampling event.
Tidal Conditions – Surface salinity values were greater than 1 ppt at six of the seven tidal stations. The highest salinity value of 21.9 ppt was recorded at station 10391 (SRT1) at a depth of 8.0 meters.

Lower Sabine Basin (Toledo Bend Reservoir and the Sabine River downstream to Tidal)

Weather – Air temperatures in the lower basin were hot with highs in the low 100s to mid 100s. Low temperatures were in the mid 60s to upper 70s. Toledo Bend received 0.67 inches of rainfall during the seven days prior to the sampling event.

Lake Level - The level of Toledo Bend was 168.37 feet with a daily average discharge of 2,091 cfs on the day of sampling. Toledo Bend has a conservation pool level of 172 feet msl. Reservoir profiles indicate a stratified water column.

Upper Sabine Basin (Lake Tawakoni, Lake Fork Reservoir, and the Sabine River upstream of Toledo Bend)

Weather - Air temperatures in the upper basin were hot with highs in the mid 80s to mid 100s. Low temperatures were in the mid 60s to upper 70s. Lake Fork and Lake Tawakoni received 0.26 and 0.11 inches of rain respectively during the seven days prior to sampling.

Lake Level - The level of Lake Tawakoni was 435.99 feet msl with a release of 6 cfs on the day of sampling. The level of Lake Fork was 400.88 feet msl with a 71 cfs release on the day of sampling. Lake Tawakoni and Lake Fork have conservation pool levels of 437.5 feet msl and 403 feet msl, respectively. Reservoir profiles at Lake Fork and Lake Tawakoni indicated a mixed upper layer followed by a stratified water column as depths were higher.

This report and additional links to data for these monitoring stations are available at the [Sabine River Authority of Texas website](#). If you have any questions or comments concerning this report, please contact:

- Pollie Holtham, Environmental Services Division Manager
409-746-3284 (pholtham@sratx.org)
- *Lower and Tidal Sabine Basin*
Jerry Wiegreffe, Environmental Services Assistant Division Manager
409-746-3284 (jwiegreffe@sratx.org)
- *Upper Sabine Basin*
Luke Sanders, Senior Biologist
903-878-7734 (lsander@sratx.org)

¹ Data in this report is considered preliminary until it is available in TCEQ's Surface Water Quality Monitoring Information System database.

SABINE RIVER AUTHORITY OF TEXAS
Monthly Water Quality Report

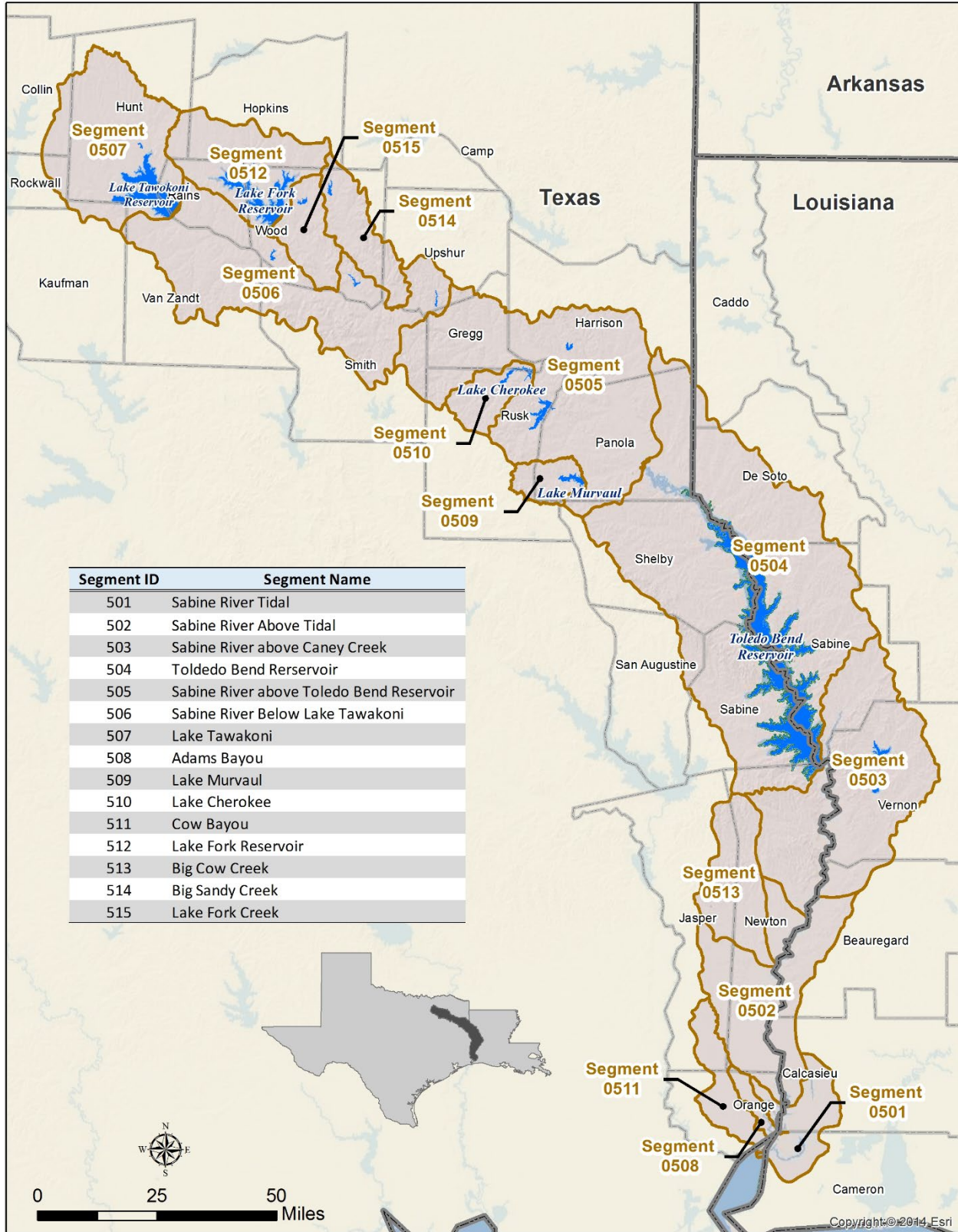
Table of Contents

Fixed Monitoring Stations	4
Segment 0501 – Sabine River Tidal.....	5
Segment 0502 - Sabine River Above Tidal.....	7
Segment 0503 - Sabine River Above Caney Creek	8
Segment 0504 – Toledo Bend Reservoir.....	9
Segment 0505 - Sabine River Above Toledo Bend Reservoir	14
Segment 0506 - Sabine River Below Lake Tawakoni	15
Segment 0507 - Lake Tawakoni	19

Table of Figures

Sabine Basin Map	3
Segment 0501	6
Segment 0502.....	7
Segment 0503.....	8
Toledo Bend Reservoir Profiles	12
Segment 0504.....	13
Segment 0505.....	14
Lake Fork Reservoir Profiles.....	17
Segment 0506.....	18
Lake Tawakoni Reservoir Profiles	20
Segment 0507.....	21

Sabine Basin Map



Current Fixed Monitoring Stations

Segment	Station TCEQ ID (SRA-TX ID)	Location
501	10391 (SRT1)	SABINE RIVER AT CHANNEL CAN 3
501	15654 (BB1)	BLACK BAYOU IN CAMERON PARISH
511	10449 (CB1)	COW BAYOU AT ROUND BUNCH ROAD
508	10441 (AB2)	ADAMS BAYOU AT FM 1006
501	15653 (ICW1)	INTERCOASTAL WATERWAY AT PERRY RIDGE
501	10394 (SRT2)	SABINE RIVER AT IH 10
501	10395 (SR1)	SABINE RIVER 12.00 KM UPSTREAM OF IH 10
502	10397 (SR2)	SABINE RIVER AT SH 12 NORTH OF DEWEYVILLE TX.
513	10465 (BCC1)	BIG COW CREEK AT FM 1416 SOUTH OF BON WIER
503	10398 (SR3)	SABINE RIVER AT US 190 EAST OF BON WIER TX.
503	10340 (BA4)	ANACOCO BAYOU AT LOUISIANA HWY 111 CROSSING SOUTHWEST OF KNIGHT LA.
503	10399 (SR5)	SABINE RIVER AT SH 63 EAST OF BURKEVILLE TX.
503	10401 (TB6S)	SABINE RIVER BELOW TOLEDO BEND RESERVOIR AT RIGHT ABUTMENT OF SPILLWAY FOR DAM
503	15660 (BT1)	BAYOU TORO AT LA SH 392 IN SABINE PARISH SW OF HORNBECK LA.
504	10404 (TB6A)	TOLEDO BEND RESERVOIR MAIN LAKE ABOVE THE DAM AT THE OLD RIVER CHANNEL
504	10406 (TB6C)	TOLEDO BEND RESERVOIR IN SIX MILE BOAT LANE 0.8KM EAST OF SH 87
504	18054 (TB6Q)	TOLEDO BEND RESERVOIR IN NEGREET BAYOU
504	10411 (TB6F)	TOLEDO BEND RESERVOIR IN SUNSHINE BAY NEAR FM 3121 BRIDGE
504	10402 (TB6H)	TOLEDO BEND RESERVOIR AT SH 21 NORTHEAST OF MILAM
504	15659 (TB6K)	TOLEDO BEND RESERVOIR IN LANANA BAYOU AT LOUISIANA SH 191 IN SABINE PARISH LOUISIANA WEST OF MANY
504	15655 (TB6J)	TOLEDO BEND RESERVOIR PATROON BAYOU BRANCH AT FM 276
504	18053 (TB6LN)	TOLEDO BEND RESERVOIR SAN MIGUEL ARM BOAT LANE
504	18052 (TB6R)	TOLEDO BEND RESERVOIR AT RAGTOWN
505	10415 (SR10)	SABINE RIVER AT FM 2517
505	13628 (SR11)	SABINE RIVER AT US 59
505	10427 (SR16)	SABINE RIVER AT SH 42
505	10423 (SR14)	SABINE RIVER AT SH 149 SOUTH OF LONGVIEW TX
506	10428 (SR17)	SABINE RIVER AT US 271
506	10429 (SR19)	SABINE RIVER AT SH 14 S. OF HAWKINS
506	10430 (SR21)	SABINE RIVER AT US 69
514	10468 (BS1)	BIG SANDY CREEK AT SH 155
515	10469 (LF20)	LAKE FORK CREEK AT US 80
512	10458 (LF2)	LAKE FORK RESERVOIR NEAR DAM IN CREEK CHANNEL
512	10462 (LF4)	LAKE FORK RESERVOIR MID-COVE IN LAKE FORK CREEK ARM AT FM 515
512	10461 (LF3)	LAKE FORK RESERVOIR MID-ARM IN CANEY CREEK ARM AT FM 515
507	10434 (LT23A)	LAKE TAWAKONI IN THE MAIN LAKE NEAR THE DAM
507	21173 (LT23DN)	LAKE TAWAKONI IN WACO BAY EQUIDISTANT FROM FINGER AND SPRING POINTS 1.17KM BEARING 18.61 DEGREES FROM IRON BRIDGE PUMPING STATION
507	10437 (LT23B)	LAKE TAWAKONI AT SH 276

Segment 0501 – Sabine River Tidal

Description: The designated segment includes the Sabine River from the confluence with Sabine Lake in Orange County to West Bluff in Orange County. Although some areas are quite rural, this part of the Sabine Basin has two cities with populations greater than 5,000 and a variety of industries.

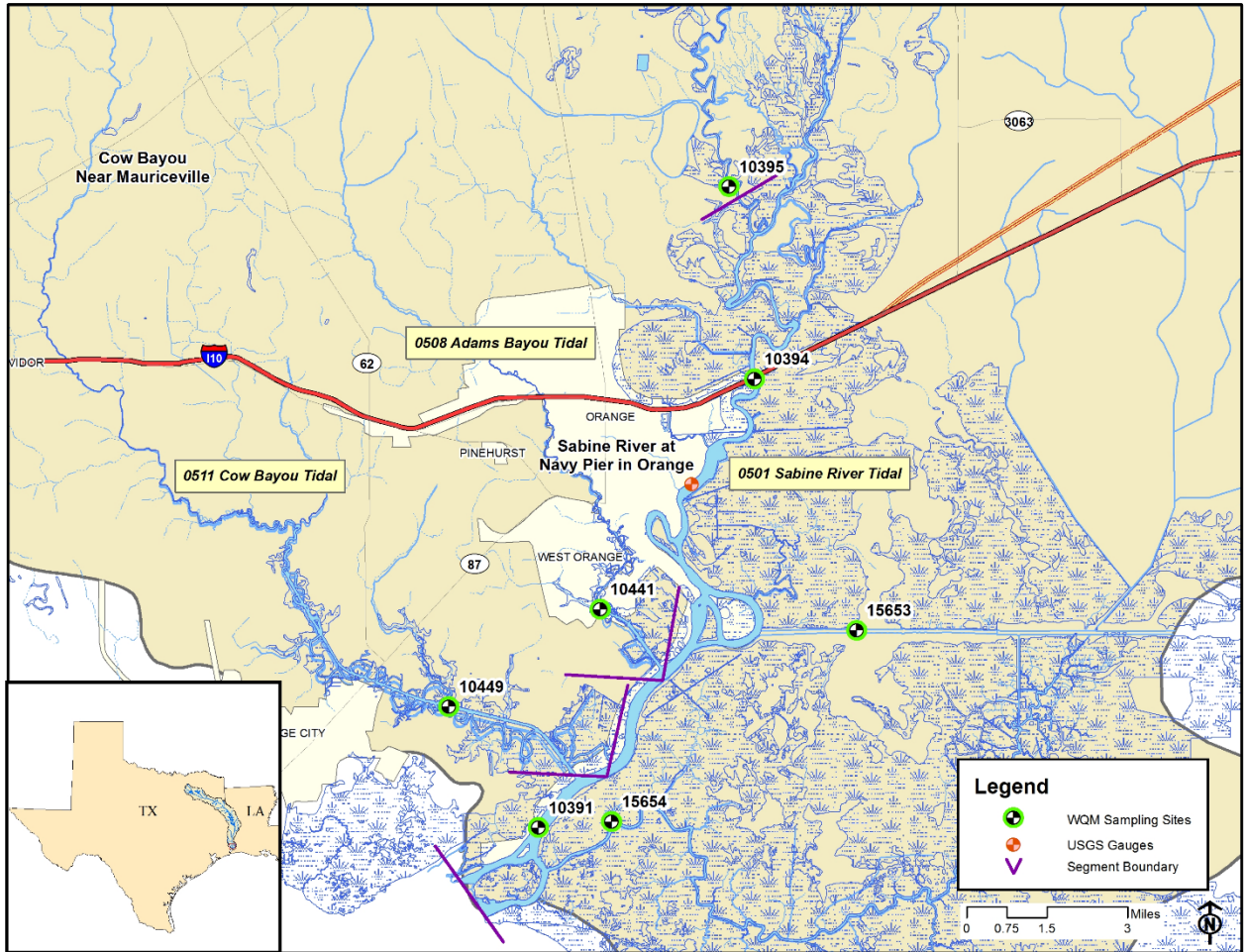
Segment 0508 – Adams Bayou Tidal. The segment reaches from the confluence with the Sabine River in Orange County to a point 1.1 kilometers (0.7 miles) upstream of IH-10 in Orange County.

Segment 0511 – Cow Bayou Tidal. The segment reaches from the confluence with the Sabine River in Orange County to a point 4.8 kilometers (3.0 miles) upstream of IH-10 in Orange County.

Segment 0501 Water Quality

Date and Time	Station	Depth	Temp	pH	DO	% Sat	Cond	TDS	Salinity	Secchi	Turbidity	Enterococcus
		meters	°C	SU	mg/L		µS/cm	mg/L	ppt	meters	NTU	mpn/ 100mL
9/14/23 09:31	10391 (SRT1)	0.3	29.7	7.6	5.8	83	25,600	16,400	15.6	0.43	8.19	<10
		2.0	29.5	7.5	5.1	74	27,600	17,700	17.0			
		4.0	29.5	7.6	4.9	71	29,700	19,000	18.3			
		6.0	29.7	7.6	4.9	72	31,500	20,200	19.7			
		8.0	29.9	7.6	1.0	16	34,600	22,200	21.9			
9/14/23 09:18	15654 (BB1)	0.3	29.1	7.4	4.2	60	27,600	17,600	16.9	0.34	15.6	10
		1.5	29.1	7.3	4.2	60	27,500	17,600	16.9			
		3.0	29.1	7.3	4.1	59	27,600	17,600	16.9			
Segment 0511												
9/14/23 09:00	10449 (CB1)	0.3	29.7	7.3	5.3	76	22,500	14,400	13.5	0.52	9.65	63
		2.0	29.9	7.2	4.1	58	23,500	15,000	14.1			
		4.0	30.3	7.1	2.5	36	25,000	16,000	15.2			
Segment 0508												
9/14/23 09:51	10441 (AB2)	0.3	29.1	7.2	5.0	70	18,900	12,100	11.1	0.37	10.4	31
		1.5	29.9	7.2	3.8	54	20,900	13,400	12.5			
		3.0	30.5	7.0	0.7	11	24,100	15,500	14.6			
9/14/23 10:08	15653 (ICW1)	0.3	30.1	7.3	4.4	63	20,800	13,300	12.4	0.44	9.86	20
		2.0	30.1	7.3	4.3	60	20,900	13,400	12.5			
		4.0	30.1	7.3	4.3	61	20,900	13,400	12.5			
		6.0	30.1	7.3	4.2	59	21,000	13,400	12.5			
9/14/23 10:55	10394 (SRT2)	0.3	29.5	7.5	6.1	82	2,940	1,890	1.6	0.52	7.85	72
		3.5	31.2	7.1	0.1	1	27,900	17,800	17.0			
		7.0	31.2	7.1	0.1	1	31,400	20,100	19.5			
9/14/23 11:22	10395 (SR1)	0.3	29.4	7.5	4.3	56	378	242	0.2	0.25	24.7	52

Segments 0501, 0508 & 0511



Segment 0502 - Sabine River Above Tidal

Description: The designated segment includes the Sabine River from West Bluff in Orange County to the confluence with Caney Creek in Newton County. The largest tributary is Big Cow Creek (Segment 0513). This is largely a rural area with no major industries or cities.

Segment 0513 – Big Cow Creek. The segment reaches from the confluence with the Sabine River in Newton County to a point 4.6 kilometers (2.9 miles) upstream of CR 255 in Newton County.

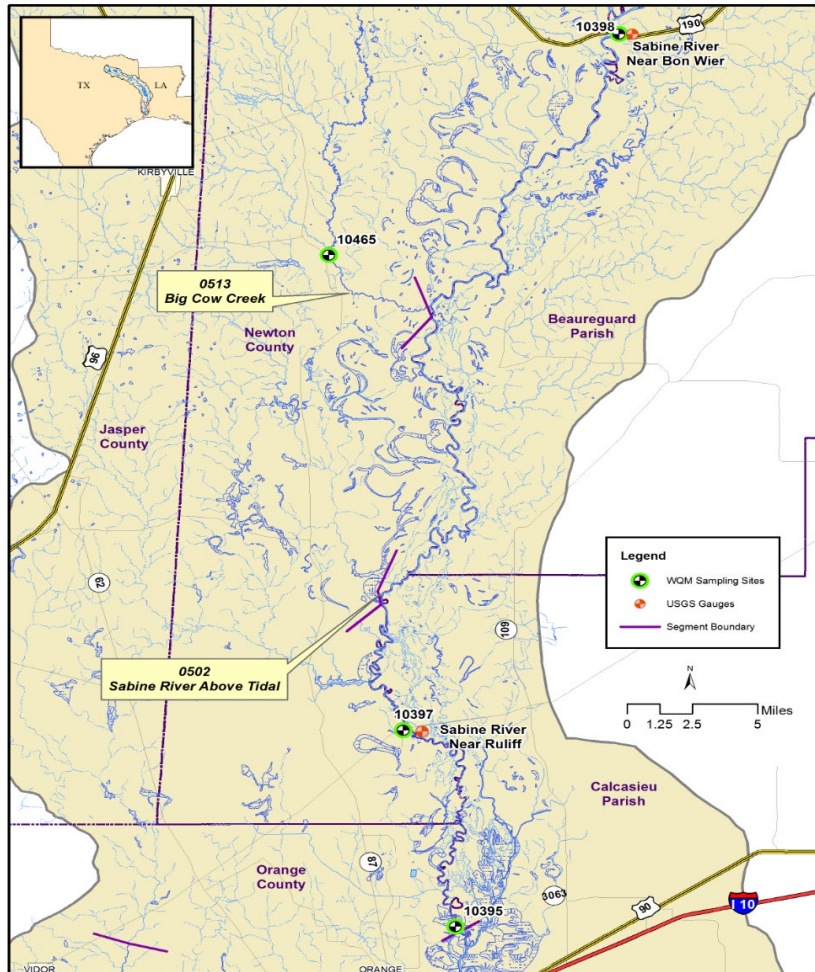
Segment 0502 USGS Recorded Flows

Date and Time	Station	USGS Station #	Location	Flow (cfs)
9/13/23 08:21	10397(SR2)	08030500	Sabine River near Ruliff, TX	1,000

Segments 0502 and 0513 Water Quality

Date and Time	Station	Depth meters	Temp °C	pH SU	DO mg/L	% Sat	Cond µS/cm	TDS mg/L	Secchi meters	Turbidity NTU	<i>E.coli</i> mpn/100mL
9/13/23 08:21	10397 (SR2)	0.3	28.9	7.1	6.8	88	215	138	0.32	20.2	3
Segment 0513											
9/13/23 09:34	10465 (BCC1)	0.3	24.8	6.0	7.7	93	47	30	0.81	11.1	96

Segments 0502 & 0513



Segment 0503 - Sabine River Above Caney Creek

Description: The designated segment includes the Sabine River from a point immediately upstream of the confluence with Caney Creek in Newton County up to Toledo Bend Dam in Newton County. This is largely a rural area, including one major city with a population greater than 5,000 and few industries. Two major tributaries that flow from Louisiana include Bayou Anacoco and Bayou Toro.

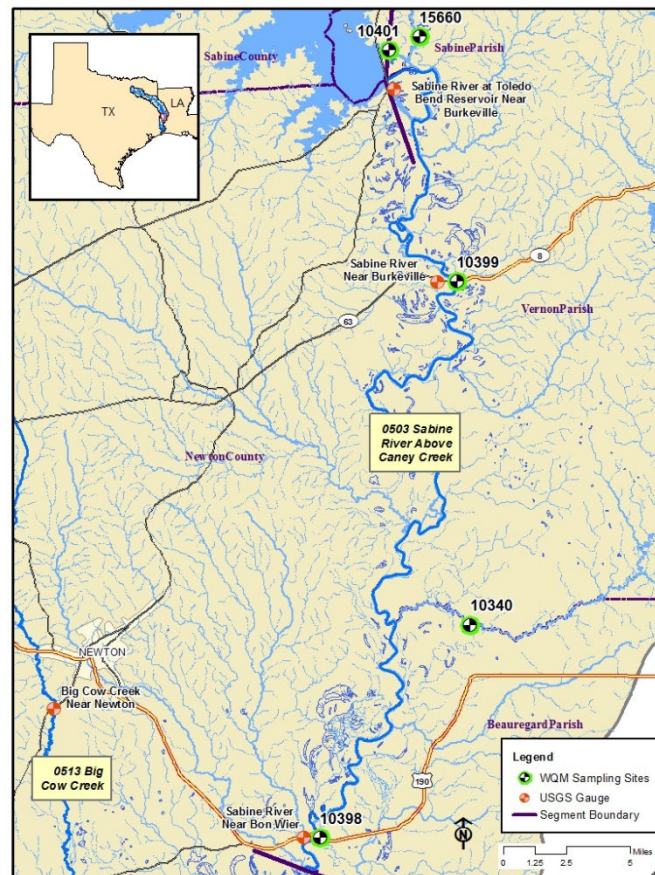
Segment 0503 USGS Recorded Flows

Date and Time	Station	USGS Station #	Location	Flow (cfs)
9/13/23 12:04	10398(SR3)	08028500	Sabine River near Bon Wier, TX	1,740
9/13/23 10:50	10399(SR5)	08026000	Sabine River near Burkeville, TX	946

Segment 0503 Water Quality

Date and Time	Station	Depth meters	Temp °C	pH SU	DO mg/L	% Sat	Cond µS/cm	TDS mg/L	Secchi meters	Turbidity NTU	<i>E. coli</i> mpn/100mL
9/13/23 12:04	10398 (SR3)	0.3	28.0	7.4	7.6	97	241	154	0.47	13.0	23
9/13/23 11:40	10340 (BA4)	0.3	27.4	7.8	6.6	83	1,400	897	0.38	15.4	66
9/13/23 10:50	10399 (SR5)	0.3	28.0	7.2	7.4	94	165	106	1.1	3.31	24
9/11/23 12:19	10401 (TB6S)	0.3	29.2	8.8	8.1	105	124	79	>1.2	1.76	2
9/11/23 12:00	15660 (BT1)	0.3	27.6	7.6	7.2	91	80	52	0.67	6.25	32

Segment 0503



Segment 0504 – Toledo Bend Reservoir

Description: The designated segment includes the Sabine River from Toledo Bend Dam in Newton County to a point immediately upstream of the confluence of Murvaul Creek in Panola County. Although this area is largely rural, it includes two cities with populations greater than 5,000. Murvaul Creek is a major tributary that enters upstream of the reservoir.

Segment 0504 Water Quality

Date and Time	Station	Depth meters	Temp °C	pH SU	DO mg/L	% Sat	Cond µS/cm	TDS mg/L	Secchi meters	Turbidity NTU	<i>E.coli</i> mpn/100mL
9/12/23 14:35	10404 (TB6A)	0.3	29.9	7.8	8.1	107	123	79	1.7	2.04	1
		1.0	29.8	7.8	8.0	106	124	79			
		2.0	29.1	7.5	7.9	104	124	79			
		3.0	28.8	7.5	7.5	97	123	79			
		4.0	28.8	7.3	7.2	93	124	79			
		5.0	28.8	6.7	7.1	92	124	79			
		8.0	28.5	NR	6.8	87	124	79			
		11.0	23.4	NR	0.1	2	136	87			
		14.0	20.1	NR	<0.1	1	130	83			
		17.0	19.7	NR	<0.1	<1	130	83			
		20.0	19.3	NR	<0.1	<1	131	84			
		23.0	18.0	NR	<0.1	<1	136	87			
		24.0	17.4	NR	<0.1	<1	141	90			
9/12/23 07:52	10406 (TB6C)	0.3	29.2	NR	7.5	98	128	82	1.0	4.65	1
		1.0	29.2	NR	7.5	98	128	82			
		2.0	29.2	NR	7.6	99	128	82			
		3.0	29.1	NR	6.3	83	128	82			
9/12/23 13:14	18054 (TB6Q)	0.3	24.0	NR	7.8	103	212	136	0.99	3.23	<1
		1.0	28.9	NR	7.7	100	216	138			
		2.0	28.6	NR	6.7	88	226	145			
		3.0	28.6	NR	6.3	81	240	154			
		4.0	28.5	NR	6.1	78	299	191			
		5.0	28.5	NR	5.7	74	328	210			
		6.0	28.4	NR	4.1	52	351	225			
		7.0	28.1	NR	1.0	12	356	228			
		8.0	27.7	NR	<0.1	<1	363	232			

NR – No Result

Segment 0504 Water Quality Continued

Date and Time	Station	Depth meters	Temp °C	pH SU	DO mg/L	% Sat	Cond µS/cm	TDS mg/L	Secchi meters	Turbidity NTU	<i>E.coli</i> mpn/100mL
9/11/23 10:10	10411 (TB6F)	0.3	29.5	7.7	6.4	85	122	78	0.46	7.42	2
		1.0	29.5	8.2	6.3	82	122	78			
		2.0	29.5	8.2	6.1	80	122	78			
		3.0	29.5	8.2	5.9	77	122	78			
		4.0	29.5	8.0	5.8	76	122	78			
9/12/23 10:51	10402 (TB6H)	0.3	29.3	NR	9.2	120	127	81	0.80	3.88	<1
		1.0	29.0	NR	8.2	107	127	81			
		2.0	29.0	NR	7.8	101	126	81			
		3.0	28.9	NR	7.4	96	126	81			
		4.0	28.8	NR	7.0	90	126	81			
		5.0	28.7	NR	5.9	78	126	81			
		8.0	28.2	NR	3.8	49	126	81			
		11.0	24.0	NR	0.1	1	152	98			
		14.0	20.9	NR	<0.1	<1	149	95			
		17.0	20.4	NR	<0.1	<1	148	95			
		20.0	20.2	NR	<0.1	<1	154	99			
9/11/23 10:38	15659 (TB6K)	0.3	29.1	7.6	6.8	88	130	83	0.40	9.46	8
		1.0	28.8	8.0	5.6	73	129	82			
		2.0	28.8	8.0	5.1	66	128	82			
		3.0	28.8	8.0	5.1	66	128	82			
		4.0	28.7	7.9	4.8	62	128	82			
		5.0	28.7	7.9	4.6	59	128	82			
		6.0	28.7	7.9	4.5	58	128	82			
		7.0	28.6	7.8	4.4	57	128	82			
		8.0	28.6	7.8	4.4	57	128	82			
9/11/23 09:31	15655 (TB6J)	0.3	29.0	7.4	5.5	71	131	84	0.40	8.50	<1
		1.0	29.0	7.3	5.4	70	130	84			
		2.0	29.0	7.3	5.5	71	131	84			
		3.0	29.0	7.2	5.5	72	130	83			

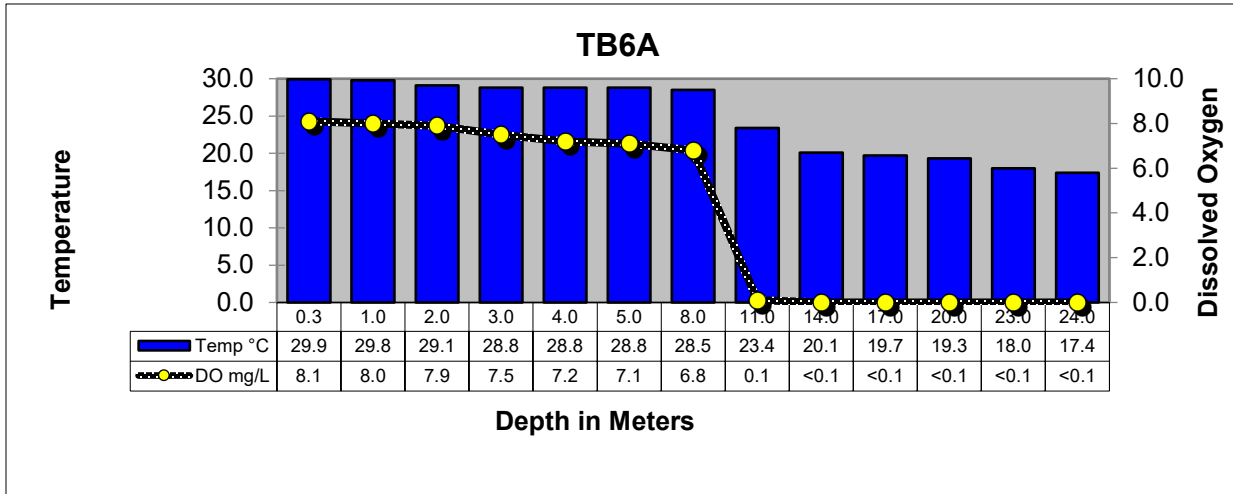
NR – No Result

Segment 0504 Water Quality Continued

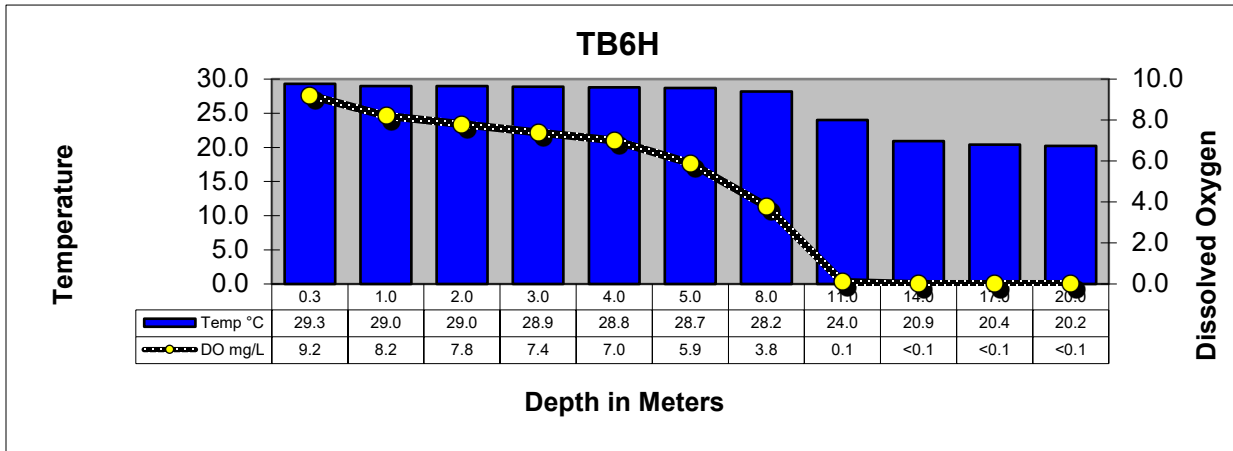
Date and Time	Station	Depth meters	Temp °C	pH SU	DO mg/L	% Sat	Cond μS/cm	TDS mg/L	Secchi meters	Turbidity NTU	<i>E.coli</i> mpn/100mL
9/12/23 12:18	18053 (TB6LN)	0.3	29.6	NR	9.1	120	127	81	0.61	5.96	1
		1.0	29.1	NR	7.8	100	127	81			
		2.0	28.8	NR	5.8	77	126	81			
		3.0	28.7	NR	3.9	50	126	81			
		4.0	28.7	NR	3.1	41	127	81			
		5.0	28.6	NR	1.7	21	129	82			
9/12/23 09:23	18052 (TB6R)	0.3	29.0	NR	8.2	107	141	90	0.73	5.97	<1
		1.0	29.0	NR	8.2	107	139	89			
		2.0	29.0	NR	8.2	106	140	90			
		3.0	28.9	NR	7.4	98	138	88			
		4.0	28.7	NR	4.2	54	139	89			
		5.0	28.7	NR	4.2	55	139	88			
		6.0	28.7	NR	4.2	55	138	88			
		7.0	28.7	NR	4.0	52	139	89			
		8.0	28.7	NR	3.7	46	140	89			
		9.0	28.7	NR	3.7	48	139	89			
		10.0	28.6	NR	3.9	51	139	89			
		11.0	28.4	NR	0.5	6	146	93			

NR – No Result

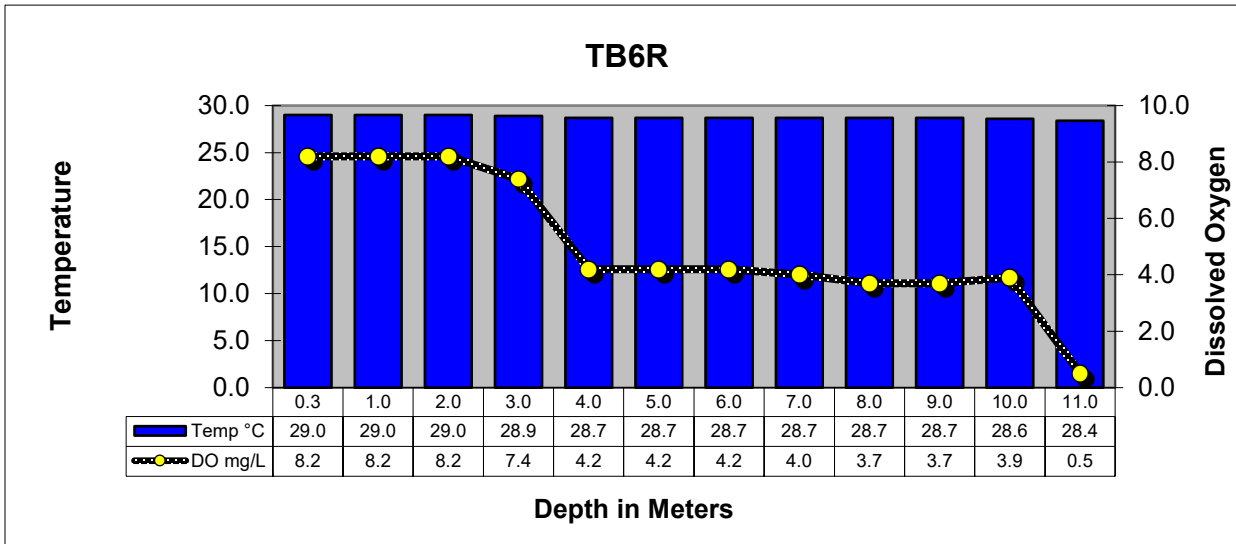
Toledo Bend Reservoir Profiles



TOLEDO BEND RESERVOIR MAIN LAKE ABOVE THE DAM AT THE OLD RIVER CHANNEL

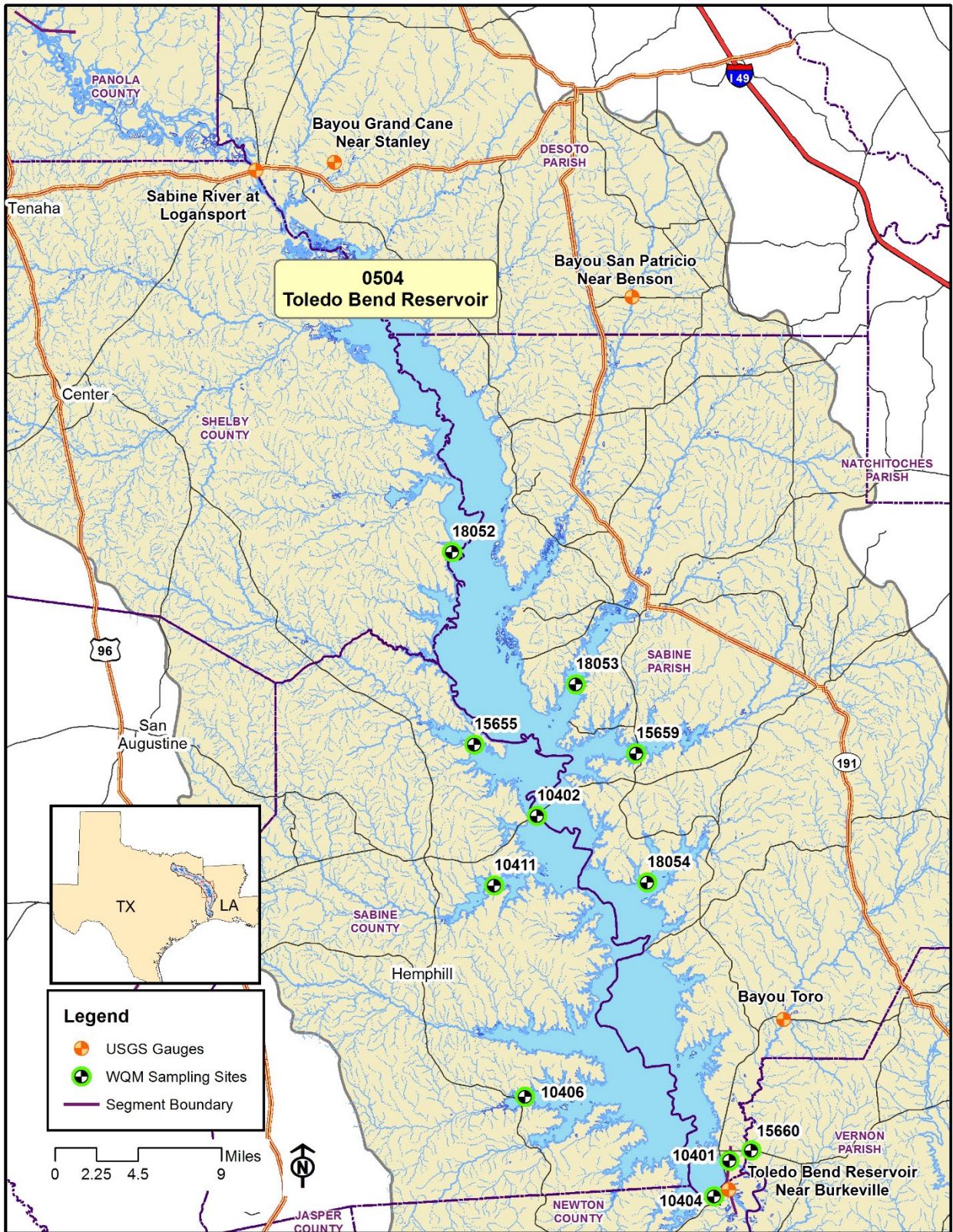


TOLEDO BEND RESERVOIR AT SH 21 NORTHEAST OF MILAM



TOLEDO BEND RESERVOIR AT RAGTOWN

Segment 0504



Segment 0505 - Sabine River Above Toledo Bend Reservoir

Description: The designated segment includes the Sabine River from a point immediately upstream of the confluence of Murvaul Creek in Panola County to a point 100 meters (110 yards) downstream of US 271 in Gregg County. Segment 0505 is used extensively for water supply and contains the highest concentration of population in the Sabine Basin with eight cities having populations greater than 5,000. Segment 0505 includes a large section of the East Texas Oilfield as well as numerous industries.

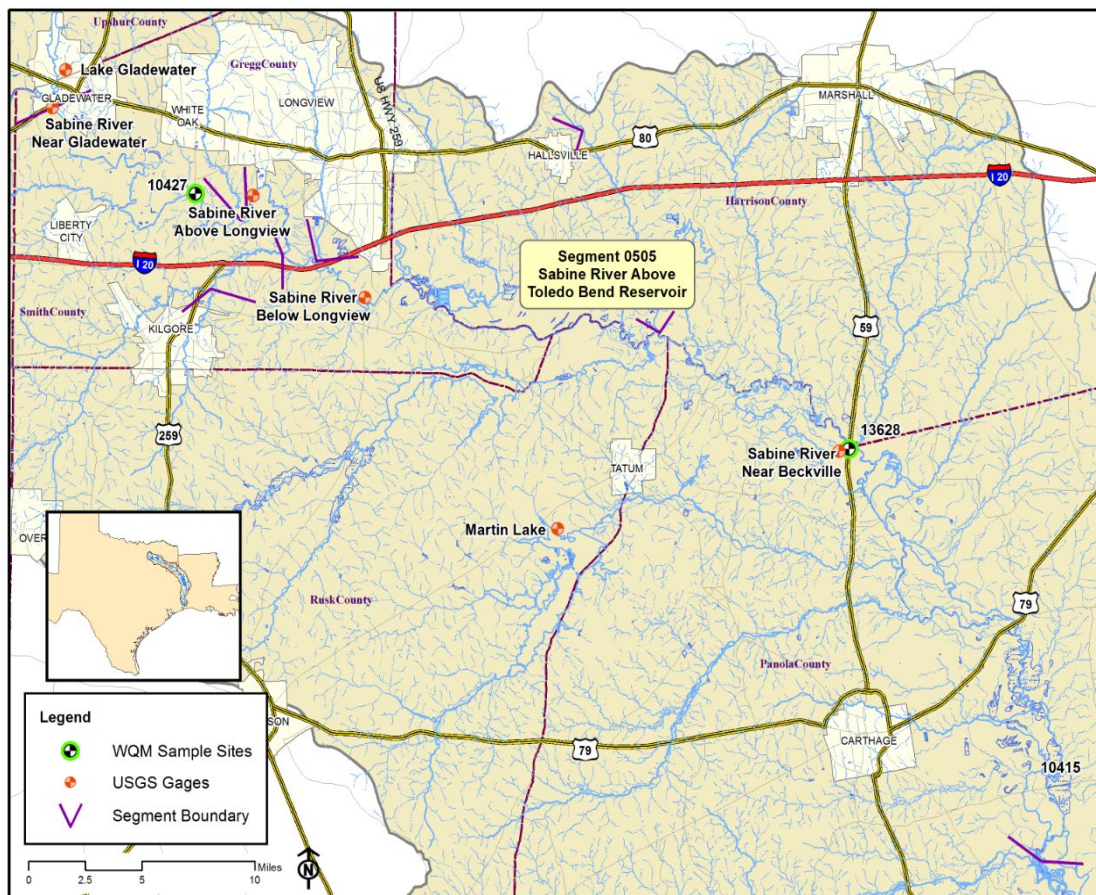
Segment 0505 USGS Recorded Flows

Date and Time	Station	USGS Station #	Location	Flow (cfs)
9/13/23 09:48	13628(SR11)	08022040	Sabine River near Beckville, TX	113
9/13/23 09:01	10423(SR14)	08020990	Sabine River near Longview, TX	103

Segment 0505 Water Quality

Date and Time	Station	Depth meters	Temp °C	pH SU	DO mg/L	% Sat	Cond µS/cm	TDS mg/L	Secchi meters	Turbidity NTU	<i>E. coli</i> mpn/100mL
9/13/23 10:19	10415(SR10)	0.3	27.1	7.6	5.6	72	477	305	0.18	56.8	276
9/13/23 09:48	13628(SR11)	0.3	27.3	7.9	6.7	85	500	320	0.15	63.3	5
9/13/23 08:30	10427(SR16)	0.3	27.4	7.6	7.0	90	266	171	0.18	50.7	11
9/13/23 09:01	10423(SR14)	0.3	26.9	7.6	7.3	93	317	203	0.21	36.2	13

Segment 0505



Segment 0506 - Sabine River Below Lake Tawakoni

Description: The designated segment includes the Sabine River from a point 100 meters (110 yards) downstream of US 271 in Gregg County to Iron Bridge Dam in Rains County. This is largely a rural area with no cities having a population greater than 5,000. Oilfield activities, rural housing developments, and agriculture are in the watershed. The major tributaries include:

Segment 0514 - Big Sandy Creek. The segment reaches from the confluence with the Sabine River in Upshur County to a point 2.6 kilometers (1.6 miles) upstream of SH 11 in Hopkins County.

Segment 0515 - Lake Fork Creek. The segment reaches from the confluence with the Sabine River in Wood County to Lake Fork Dam in Wood County.

Segment 0512 - Lake Fork Reservoir. The segment reaches from Lake Fork Dam in Wood County up to the normal pool elevation of 403 feet.

Segment 0506 USGS- Recorded Flows

Date and Time	Station	USGS Station #	Location	Flow (cfs)
9/13/23 08:00	10428(SR17)	08020000	Sabine River near Gladewater, TX	112
9/12/23 14:44	10429(SR19)	08019200	Sabine River near Hawkins, TX	94
9/12/23 14:06	10430(SR21)	08018500	Sabine River near Mineola, TX	8
Segment 0514				
9/12/23 15:06	10468(BS1)	08019500	Big Sandy Creek near Big Sandy, TX	7

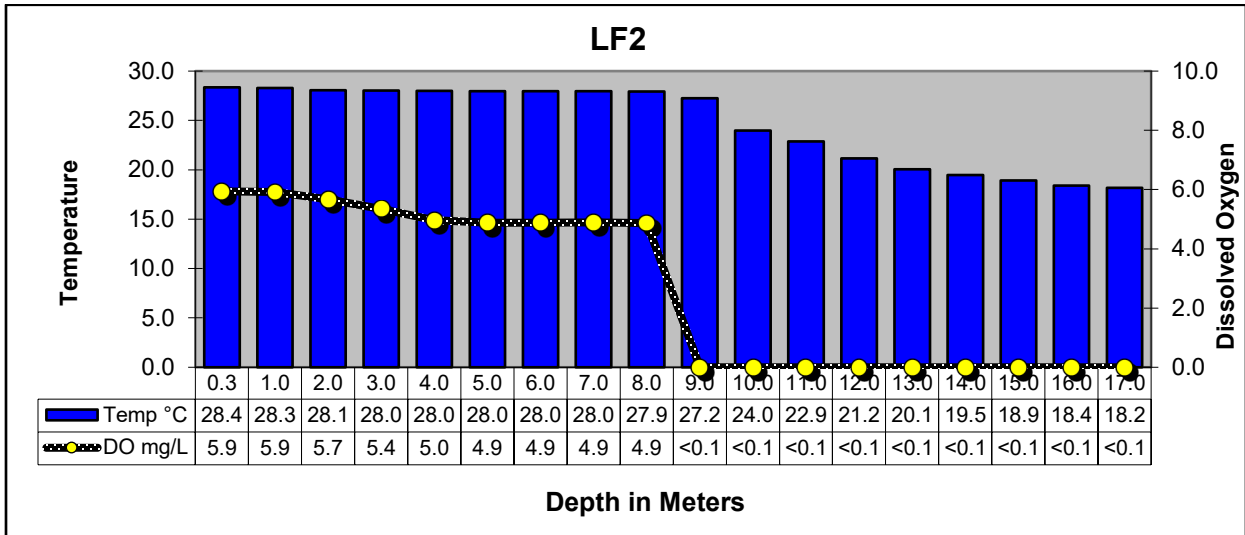
Segment 0506 Water Quality

Date and Time	Station	Depth meters	Temp °C	pH SU	DO mg/L	% Sat	Cond µS/cm	TDS mg/L	Secchi meters	Turbidity NTU	<i>E. coli</i> mpn/100mL
9/13/23 08:00	10428(SR17)	0.3	27.3	7.6	7.8	100	255	163	0.20	43.9	5
9/12/23 14:44	10429(SR19)	0.3	27.5	8.1	9.0	116	238	152	0.23	34.2	66
9/12/23 14:06	10430(SR21)	0.3	25.6	7.4	6.7	83	475	304	0.20	38.9	39
Segment 0514											
9/12/23 15:06	10468(BS1)	0.3	24.8	7.0	6.6	80	117	75	0.72	10.8	105
Segment 0515											
9/12/23 14:26	10469(LF20)	0.3	26.0	7.6	7.7	96	192	123	0.21	47.8	19

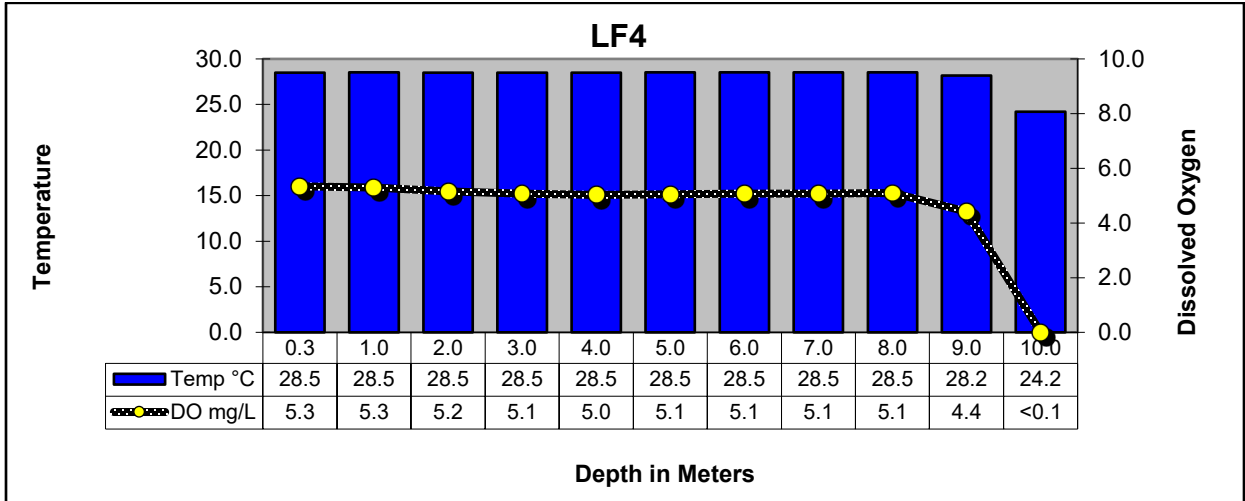
Segment 0506 Water Quality Continued

Date and Time	Station	Depth meters	Temp °C	pH SU	DO mg/L	% Sat	Cond µS/cm	TDS mg/L	Secchi meters	Turbidity NTU	<i>E. coli</i> mpn/100mL
Segment 0512											
9/12/23 12:37	10458(LF2)	0.3	28.4	7.6	5.9	78	189	121	0.92	4.80	1
		1.0	28.3	7.5	5.9	77	189	121			
		2.0	28.1	7.4	5.7	73	189	121			
		3.0	28.0	7.3	5.4	68	189	121			
		4.0	28.0	7.2	5.0	64	188	121			
		5.0	28.0	7.1	4.9	63	189	121			
		6.0	28.0	7.0	4.9	63	188	120			
		7.0	28.0	6.8	4.9	63	188	121			
		8.0	27.9	6.8	4.9	63	189	121			
		9.0	27.2	6.6	<0.1	<1	198	127			
		10.0	24.0	6.5	<0.1	<1	210	135			
		11.0	22.9	6.4	<0.1	<1	205	131			
		12.0	21.2	6.3	<0.1	<1	199	127			
		13.0	20.1	6.2	<0.1	<1	201	128			
		14.0	19.5	6.1	<0.1	<1	197	127			
		15.0	18.9	6.0	<0.1	<1	205	131			
		16.0	18.4	6.0	<0.1	<1	215	138			
		17.0	18.2	6.0	<0.1	<1	220	141			
9/12/23 11:23	10462(LF4)	0.3	28.5	7.6	5.3	70	191	122	0.65	6.33	4
		1.0	28.5	7.5	5.3	69	191	122			
		2.0	28.5	7.4	5.2	67	191	122			
		3.0	28.5	7.3	5.1	66	191	122			
		4.0	28.5	7.3	5.0	66	191	122			
		5.0	28.5	7.2	5.1	66	191	122			
		6.0	28.5	7.2	5.1	66	191	122			
		7.0	28.5	7.2	5.1	66	191	122			
		8.0	28.5	7.2	5.1	67	191	122			
		9.0	28.2	7.1	4.4	59	192	123			
		10.0	24.2	6.7	<0.1	<1	234	150			
9/12/23 11:43	10461(LF3)	0.3	28.3	7.4	4.6	59	191	123	0.78	7.12	<1
		1.0	28.3	7.3	4.5	59	192	123			
		2.0	28.2	7.2	4.3	57	191	122			
		3.0	28.2	7.1	4.3	57	191	122			
		4.0	28.2	7.1	4.3	56	191	122			
		5.0	28.2	7.1	4.3	56	191	122			
		6.0	28.2	7.0	4.0	50	191	122			
		7.0	28.0	6.8	<0.1	<1	208	133			
		8.0	27.3	6.7	<0.1	<1	222	143			
		9.0	27.0	6.7	<0.1	<1	227	145			

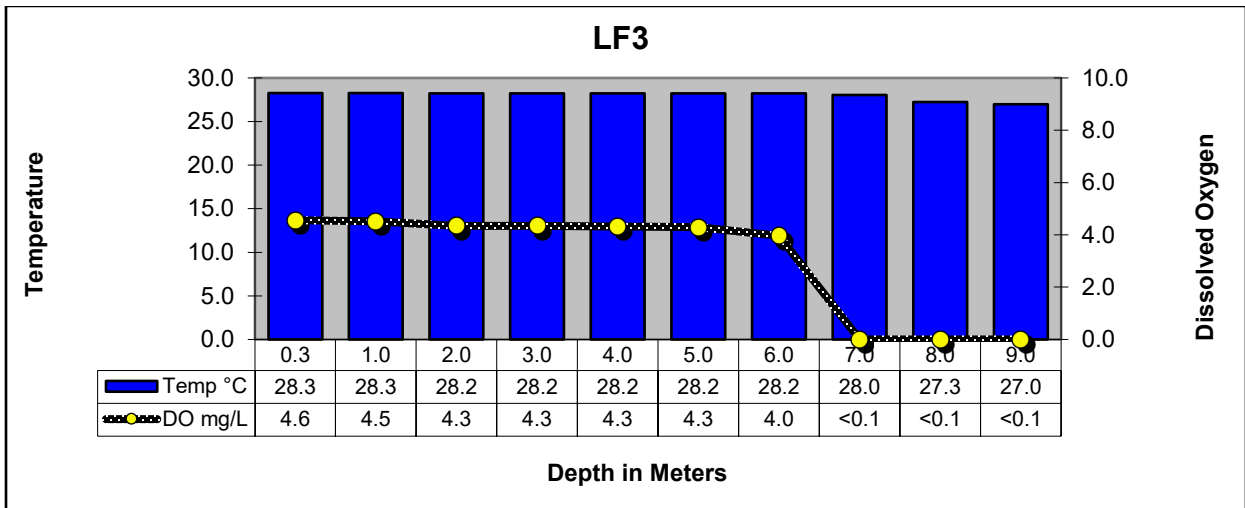
Lake Fork Reservoir Profiles



LAKE FORK RESERVOIR NEAR DAM IN CREEK CHANNEL

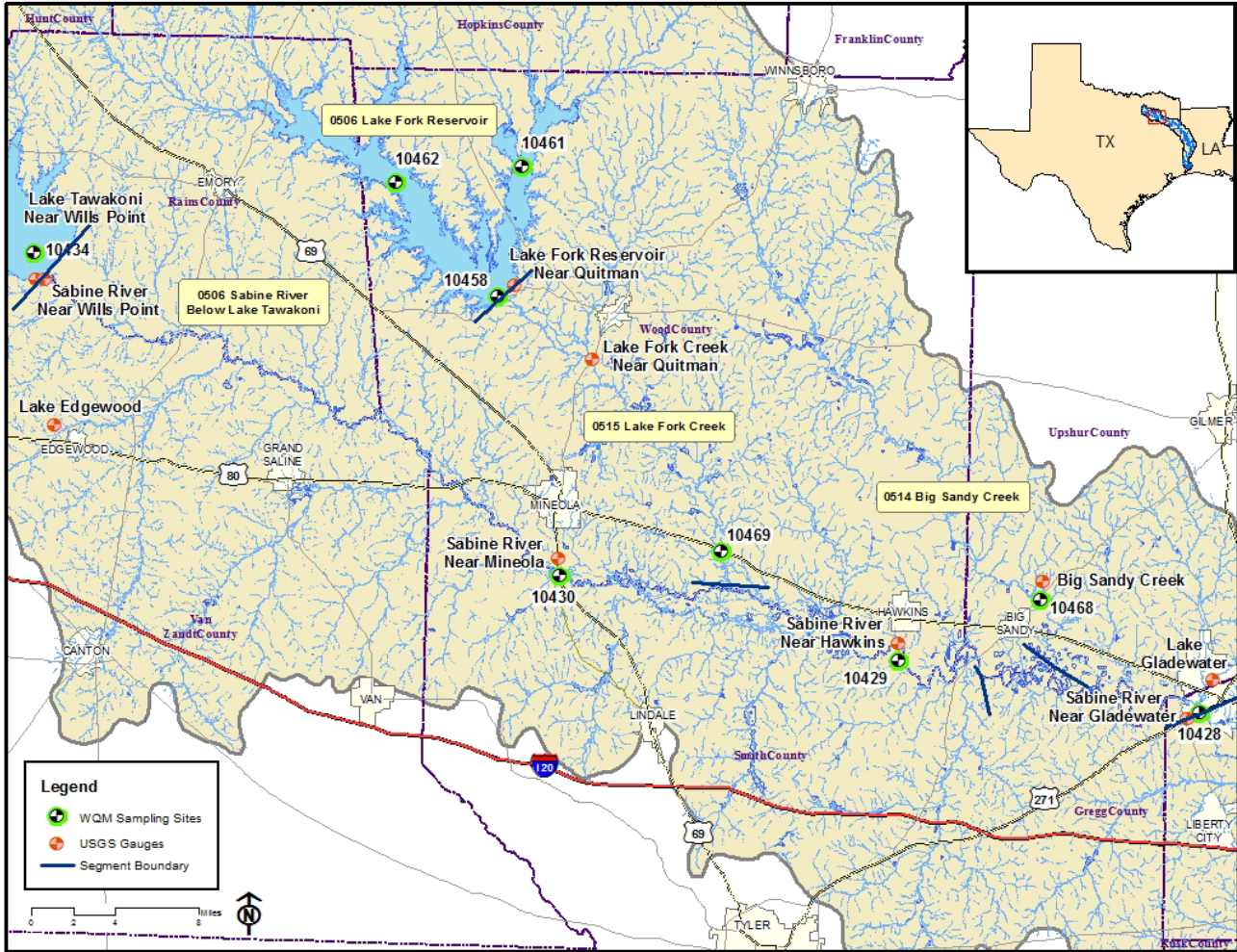


LAKE FORK RESERVOIR MID-COVE IN LAKE FORK CREEK ARM AT FM515



LAKE FORK RESERVOIR MID-ARM IN CANEY CREEK ARM AT FM515

Segments 0506, 0512, 0514 & 0515



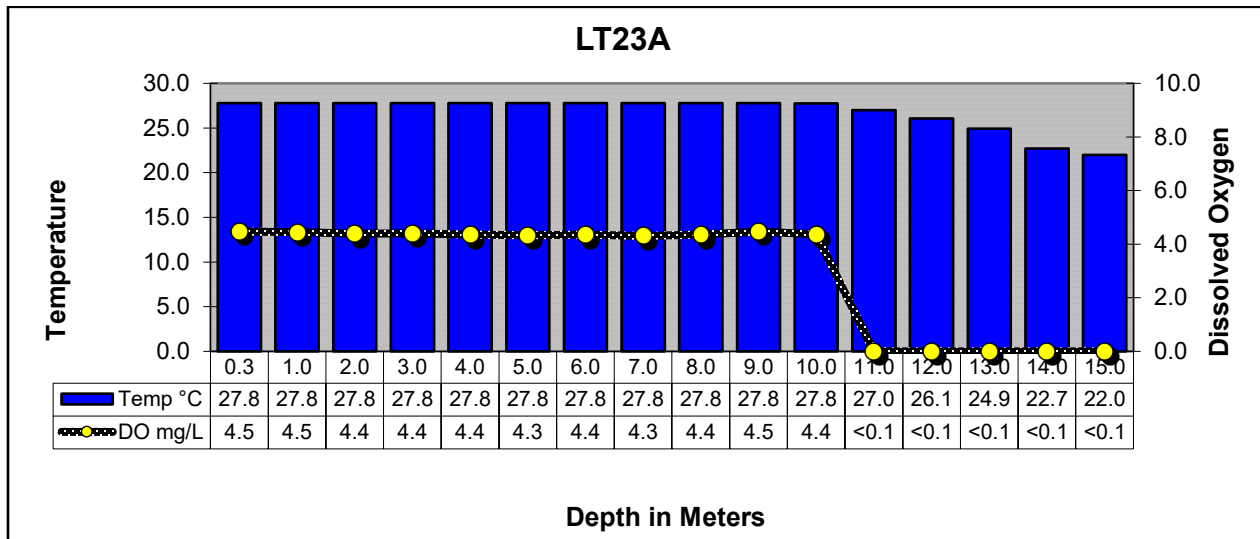
Segment 0507 - Lake Tawakoni

Description: The designated segment includes the impounded Sabine River from Iron Bridge Dam in Rains County up to the normal pool elevation of 437.5 feet. Although much of this segment is rural, it contains two cities with populations greater than 5,000 and one of the four largest cities in the Sabine Basin.

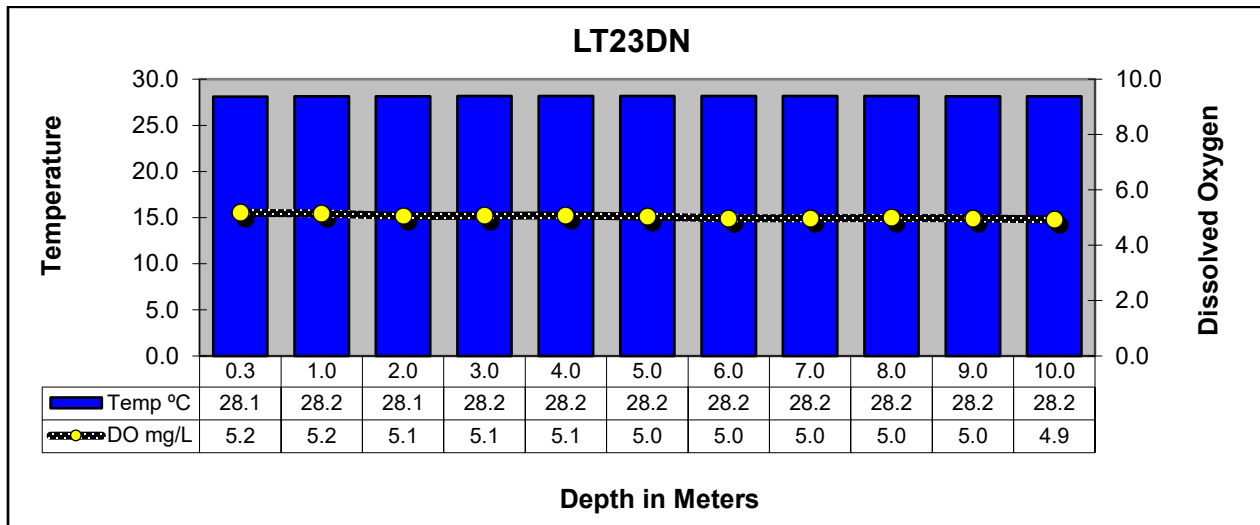
Segment 0507 Water Quality

Date and Time	Station	Depth meter s	Temp °C	pH SU	DO mg/L	% Sat	Cond µS/cm	TDS mg/L	Secchi meters	Turbidity NTU	<i>E. coli</i> mpn/100mL
9/12/23 10:11	10434(LT23A)	0.3	27.8	7.7	4.5	58	209	134	0.82	6.69	<1
		1.0	27.8	7.7	4.5	58	209	134			
		2.0	27.8	7.7	4.4	57	209	134			
		3.0	27.8	7.6	4.4	57	209	134			
		4.0	27.8	7.6	4.4	56	209	134			
		5.0	27.8	7.6	4.3	56	209	134			
		6.0	27.8	7.5	4.4	56	209	134			
		7.0	27.8	7.5	4.3	56	209	134			
		8.0	27.8	7.5	4.4	56	209	134			
		9.0	27.8	7.5	4.5	58	209	134			
		10.0	27.8	7.5	4.4	56	209	134			
		11.0	27.0	7.0	<0.1	<1	228	146			
		12.0	26.1	6.8	<0.1	<1	253	162			
		13.0	24.9	6.7	<0.1	<1	269	173			
		14.0	22.7	6.5	<0.1	<1	304	194			
		15.0	22.0	6.5	<0.1	<1	325	208			
9/12/23 09:43	21173(LT23DN)	0.3	28.1	8.0	5.2	67	208	133	0.64	9.91	<1
		1.0	28.2	7.9	5.2	67	208	133			
		2.0	28.1	7.9	5.1	66	208	133			
		3.0	28.2	7.8	5.1	66	208	133			
		4.0	28.2	7.8	5.1	66	208	133			
		5.0	28.2	7.8	5.0	65	208	133			
		6.0	28.2	7.7	5.0	65	208	133			
		7.0	28.2	7.7	5.0	65	208	133			
		8.0	28.2	7.6	5.0	65	208	133			
		9.0	28.2	7.6	5.0	65	208	133			
		10.0	28.2	7.6	4.9	64	210	134			
9/12/23 09:20	10437(LT23B)	0.3	28.4	7.9	5.1	67	205	131	0.55	11.7	<1
		1.0	28.5	7.9	4.5	58	205	131			
		2.0	28.5	7.9	4.9	64	205	131			
		3.0	28.5	7.8	5.0	65	205	131			
		4.0	28.5	7.8	5.0	66	205	131			
		5.0	28.5	7.7	5.0	66	205	131			
		6.0	28.5	7.7	4.9	64	205	131			
		7.0	28.5	7.7	5.0	65	205	131			
		8.0	28.5	7.6	4.8	62	205	131			
		9.0	28.5	6.5	<0.1	<1	209	134			

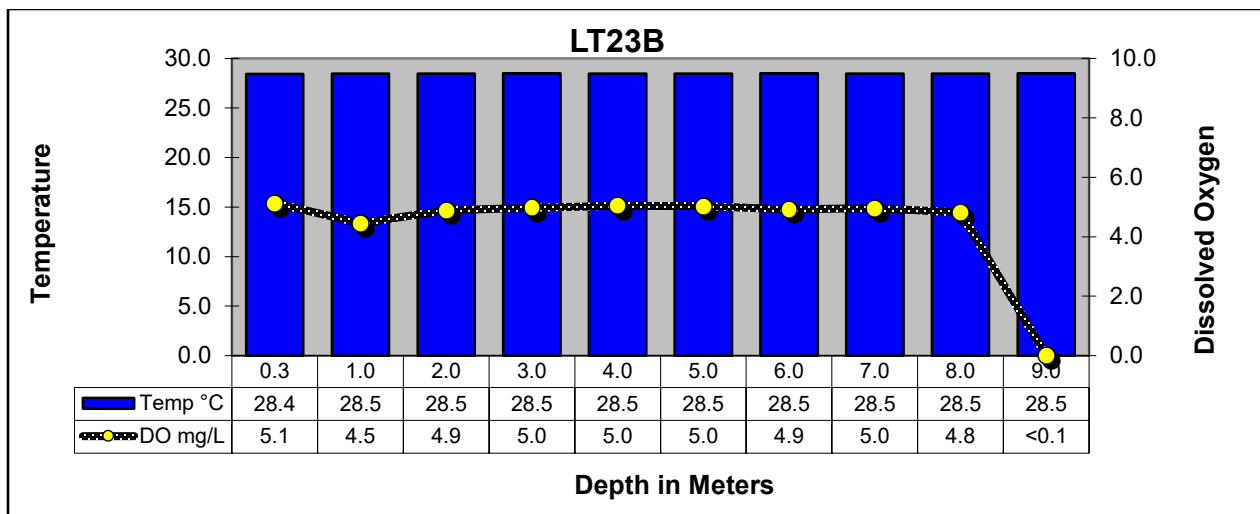
Lake Tawakoni Reservoir Profiles



LAKE TAWAKONI IN THE MAIN LAKE NEAR THE DAM



LAKE TAWAKONI IN WACO BAY EQUIDISTANT FROM FINGER AND SPRING POINTS



LAKE TAWAKONI AT SH276

Segment 0507

