

---

## SABINE RIVER AUTHORITY OF TEXAS

---

**TO:** INTERESTED PARTIES  
**FROM:** ENVIRONMENTAL SERVICES DIVISION  
**RE:** AUGUST 2019 MONTHLY WATER QUALITY REPORT

---

The Environmental Services Field Offices conducted water quality monitoring in the Sabine Basin from August 5<sup>th</sup> through the 8<sup>th</sup>. The results of field monitoring are presented in this report<sup>1</sup> and additional data can be found using the Texas Commission on Environmental Quality (TCEQ) [Clean Rivers Program Data Tool](#).

### **Sabine Basin Tidal (Including Tributaries)**

**Weather** – Air temperatures in the tidal basin were hot with highs in the low to mid 90s. Low temperatures were in the low to mid 70s. The tidal stations received 0.98 inches of rainfall in the seven days prior to the sampling event.

**Tidal Conditions** – Surface salinity values were not greater than 2 ppt at any of the six tidal stations. The highest salinity value of 0.2 ppt was recorded at station 15654 (BB1) throughout the water column.

### **Lower Sabine Basin (Toledo Bend Reservoir and the Sabine River downstream to Tidal)**

**Weather** – Air temperatures in the lower basin were hot with highs in the low 80s to mid 90s. Low temperatures ranged in the mid 60s to low 70s. Toledo Bend received 0.76 inches of rainfall during the seven days prior to the sampling event.

**Lake Level** - The level of Toledo Bend was 167.0 feet with a daily average discharge of 6,163 cfs on the day of sampling. Toledo Bend has a conservation pool level of 172 feet msl. Reservoir profiles indicated stratification of the water column.

### **Upper Sabine Basin (Lake Tawakoni, Lake Fork Reservoir, and the Sabine River upstream of Toledo Bend)**

**Weather** - Air temperatures in the upper basin were hot with highs in the mid 80s to upper 90s. Low temperatures were in the low to mid 70s. Lake Fork and Lake Tawakoni received 0.11 and 0.16 inches of rainfall, respectively, during the seven days prior to the sampling event.

**Lake Level** - The level of Lake Tawakoni was 437.30 feet msl with a release of 6 cfs on the day of sampling. The level of Lake Fork was 402.38 feet msl with a 6 cfs release on the day of sampling. Lake Tawakoni and Lake Fork have conservation pool levels of 437.5 feet msl and 403 feet msl, respectively. Reservoir profiles at Lake Tawakoni and Lake Fork indicated stratification of the water column.

This report and additional links to data for these monitoring stations are available at the [Sabine River Authority of Texas website](#). If you have any questions or comments concerning this report, please contact:

- Debra Malus, Environmental Services Division Manager  
409-746-3284 ([dmalus@sratx.org](mailto:dmalus@sratx.org))
- *Lower and Tidal Sabine Basin*  
Jerry Wiegrefe, Lower Basin Field Office Coordinator  
409-746-3284 ([jwiegrefe@sratx.org](mailto:jwiegrefe@sratx.org))
- *Upper Sabine Basin*  
Terry Wilson, Upper Basin Field Office Coordinator  
903-878-2420 ([twilson@sratx.org](mailto:twilson@sratx.org))

---

<sup>1</sup> Data in this report is considered preliminary until it is available in TCEQ's Surface Water Quality Monitoring Information System database.

**SABINE RIVER AUTHORITY OF TEXAS**  
**Monthly Water Quality Report**

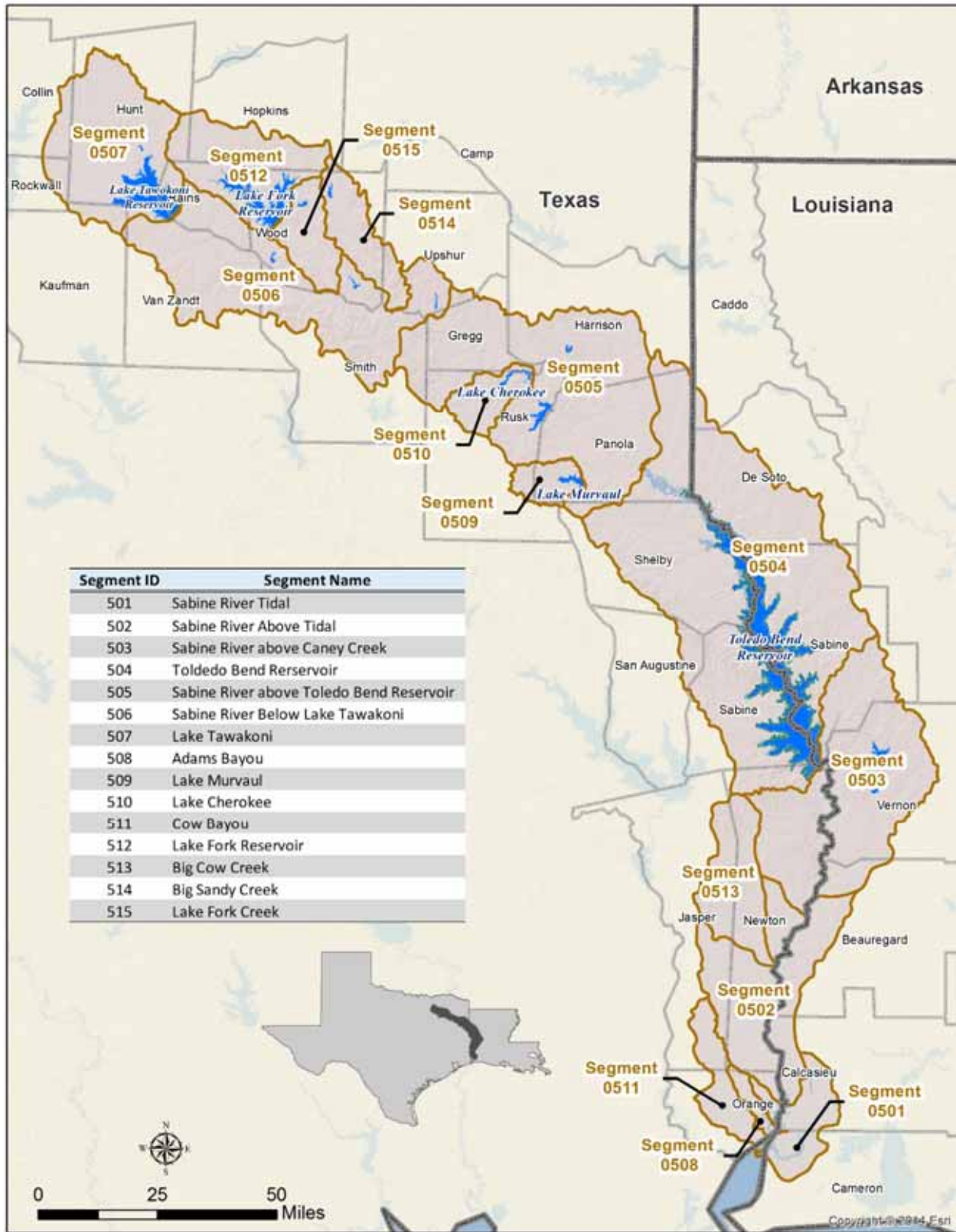
Table of Contents

<b>Fixed Monitoring Stations .....</b>	<b>4</b>
<b>Segment 0501 – Sabine River Tidal.....</b>	<b>5</b>
<b>Segment 0502 - Sabine River Above Tidal.....</b>	<b>7</b>
<b>Segment 0503 - Sabine River Above Caney Creek .....</b>	<b>8</b>
<b>Segment 0504 – Toledo Bend Reservoir.....</b>	<b>9</b>
<b>Segment 0505 - Sabine River Above Toledo Bend Reservoir .....</b>	<b>14</b>
<b>Segment 0506 - Sabine River Below Lake Tawakoni .....</b>	<b>15</b>
<b>Segment 0507 - Lake Tawakoni.....</b>	<b>19</b>

Table of Figures

<b>Sabine Basin Map .....</b>	<b>3</b>
<b>Segment 0501 .....</b>	<b>6</b>
<b>Segment 0502.....</b>	<b>7</b>
<b>Segment 0503.....</b>	<b>8</b>
<b>Toledo Bend Reservoir Profiles .....</b>	<b>12</b>
<b>Segment 0504.....</b>	<b>13</b>
<b>Segment 0505.....</b>	<b>14</b>
<b>Lake Fork Reservoir Profiles.....</b>	<b>17</b>
<b>Segment 0506.....</b>	<b>18</b>
<b>Lake Tawakoni Reservoir Profiles .....</b>	<b>20</b>
<b>Segment 0507 .....</b>	<b>21</b>

## Sabine Basin Map



## Current Fixed Monitoring Stations

Segment	Station TCEQ ID (SRA-TX ID)	Location
501	10391 (SRT1)	SABINE RIVER AT CHANNEL CAN 3
501	15654 (BB1)	BLACK BAYOU IN CAMERON PARISH
511	10449 (CB1)	COW BAYOU AT ROUND BUNCH ROAD
508	10441 (AB2)	ADAMS BAYOU AT FM 1006
501	15653 (ICW1)	INTERCOASTAL WATERWAY AT PERRY RIDGE
501	10394 (SRT2)	SABINE RIVER AT IH 10
502	10395 (SR1)	SABINE RIVER 12.00 KM UPSTREAM OF IH 10
502	10397 (SR2)	SABINE RIVER AT SH 12 NORTH OF DEWEYVILLE TX.
513	10465 (BCC1)	BIG COW CREEK AT FM 1416 SOUTH OF BON WIER
503	10398 (SR3)	SABINE RIVER AT US 190 EAST OF BON WIER TX.
503	10340 (BA4)	ANACOCO BAYOU AT LOUISIANA HWY 111 CROSSING SOUTHWEST OF KNIGHT LA.
503	10399 (SR5)	SABINE RIVER AT SH 63 EAST OF BURKEVILLE TX.
503	10401 (TB6S)	SABINE RIVER BELOW TOLEDO BEND RESERVOIR AT RIGHT ABUTMENT OF SPILLWAY FOR DAM
503	15660 (BT1)	BAYOU TORO AT LA SH 392 IN SABINE PARISH SW OF HORNBECK LA.
504	10404 (TB6A)	TOLEDO BEND RESERVOIR MAIN LAKE ABOVE THE DAM AT THE OLD RIVER CHANNEL
504	10406 (TB6C)	TOLEDO BEND RESERVOIR IN SIX MILE BOAT LANE 0.8KM EAST OF SH 87
504	18054 (TB6Q)	TOLEDO BEND RESERVOIR IN NEGREET BAYOU
504	10411 (TB6F)	TOLEDO BEND RESERVOIR IN SUNSHINE BAY NEAR FM 3121 BRIDGE
504	10402 (TB6H)	TOLEDO BEND RESERVOIR AT SH 21 NORTHEAST OF MILAM
504	15659 (TB6K)	TOLEDO BEND RESERVOIR IN LANANA BAYOU AT LOUISIANA SH 191 IN SABINE PARISH LOUISIANA WEST OF MANY
504	15655 (TB6J)	TOLEDO BEND RESERVOIR PATROON BAYOU BRANCH AT FM 276
504	18053 (TB6LN)	TOLEDO BEND RESERVOIR SAN MIGUEL ARM BOAT LANE
504	18052 (TB6R)	TOLEDO BEND RESERVOIR AT RAGTOWN
505	10415 (SR10)	SABINE RIVER AT FM 2517
505	13628 (SR11)	SABINE RIVER AT US 59
505	10427 (SR16)	SABINE RIVER AT SH 42
506	10428 (SR17)	SABINE RIVER AT US 271
506	10429 (SR19)	SABINE RIVER AT SH 14 S. OF HAWKINS
506	10430 (SR21)	SABINE RIVER AT US 69
514	10468 (BS1)	BIG SANDY CREEK AT SH 155
515	10469 (LF20)	LAKE FORK CREEK AT US 80
512	10458 (LF2)	LAKE FORK RESERVOIR NEAR DAM IN CREEK CHANNEL
512	10462 (LF4)	LAKE FORK RESERVOIR MID-COVE IN LAKE FORK CREEK ARM AT FM 515
512	10461 (LF3)	LAKE FORK RESERVOIR MID-ARM IN CANEY CREEK ARM AT FM 515
507	10434 (LT23A)	LAKE TAWAKONI IN THE MAIN LAKE NEAR THE DAM
507	21173 (LT23DN)	LAKE TAWAKONI IN WACO BAY EQUIDISTANT FROM FINGER AND SPRING POINTS 1.17KM BEARING 18.61 DEGREES FROM IRON BRIDGE PUMPING STATION
507	10437 (LT23B)	LAKE TAWAKONI AT SH 276

## Segment 0501 – Sabine River Tidal

**Description:** The designated segment includes the Sabine River from the confluence with Sabine Lake in Orange County to West Bluff in Orange County. Although some areas are quite rural, this part of the Sabine Basin has two cities with populations greater than 5,000 and a variety of industries.

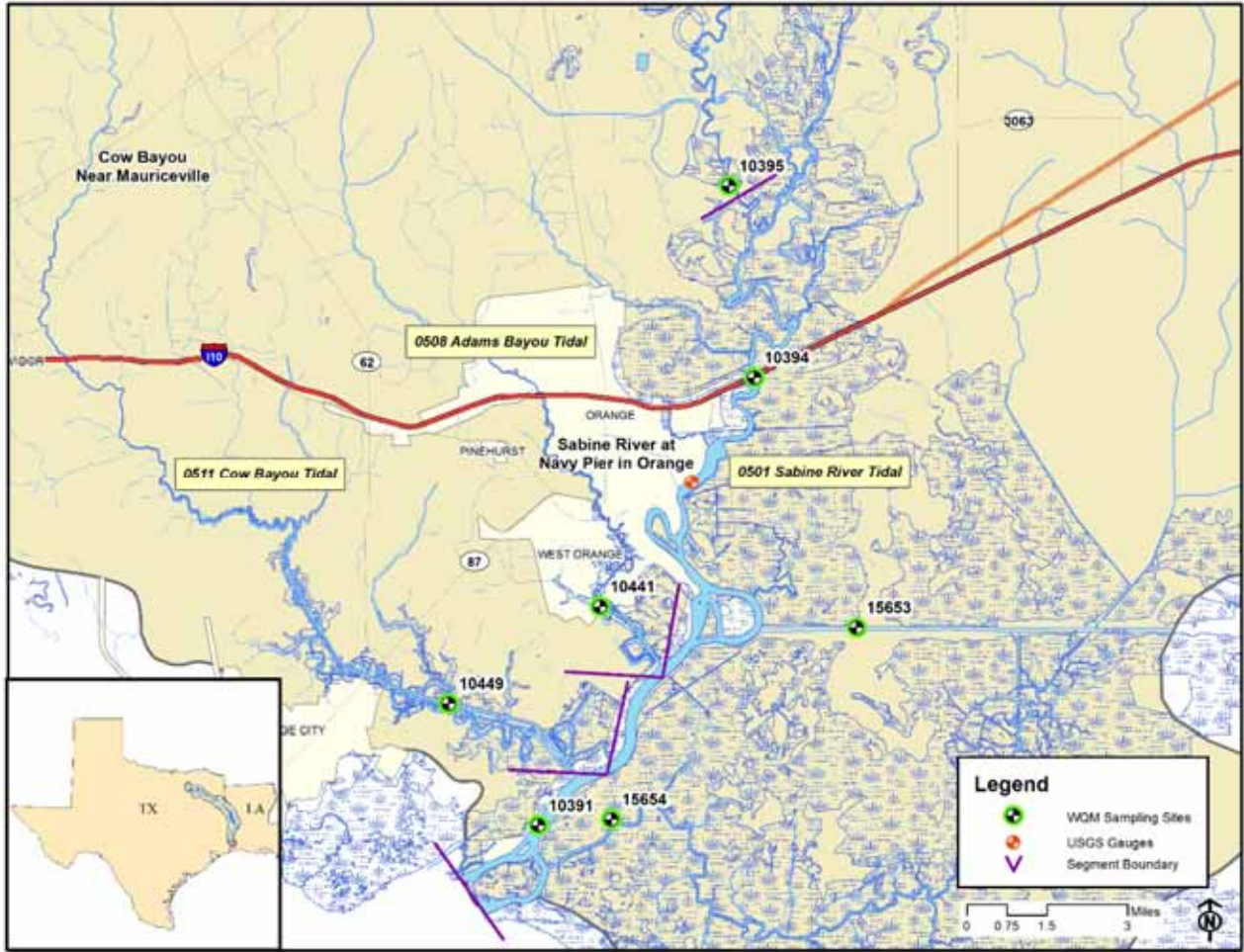
**Segment 0508 – Adams Bayou Tidal.** The segment reaches from the confluence with the Sabine River in Orange County to a point 1.1 kilometers (0.7 miles) upstream of IH-10 in Orange County.

**Segment 0511 – Cow Bayou Tidal.** The segment reaches from the confluence with the Sabine River in Orange County to a point 4.8 kilometers (3.0 miles) upstream of IH-10 in Orange County.

## Segment 0501 Water Quality

Date and Time	Station	Depth	Temp	pH	DO	% Sat	Cond	TDS	Salinity	Secchi	Turbidity	Enterococcus
		meters	°C	SU	mg/L		µS/cm	mg/L	ppt	meters	NTU	mpn/100mL
8/8/19 09:48	10391(SRT1)	0.3	29.4	6.5	5.6	73	136	87	0.1	0.72	12.6	379
		3.0	29.2	6.4	5.6	72	136	87	0.1			
		6.0	29.2	6.4	5.4	71	135	87	0.1			
		9.0	29.2	6.4	5.4	71	135	87	0.1			
		10.0	29.2	6.4	5.4	70	136	87	0.1			
8/8/19 09:38	15654(BB1)	0.3	29.6	6.6	5.7	75	302	193	0.2	0.58	12.8	20
		1.5	29.6	6.6	5.7	75	303	194	0.2			
		3.0	29.6	6.6	5.6	74	302	193	0.2			
<b>Segment 0511</b>												
8/8/19 09:20	10449(CB1)	0.3	30.7	6.5	5.1	68	229	147	0.1	0.70	13.6	63
		2.0	30.3	6.4	5.0	66	215	137	0.1			
		4.0	29.6	6.4	4.9	64	163	104	0.1			
<b>Segment 0508</b>												
8/8/19 10:05	10441(AB2)	0.3	30.0	6.5	3.3	44	199	127	0.1	0.56	16.8	109
		2.0	29.6	6.4	2.4	30	196	125	0.1			
		4.0	29.3	6.3	0.8	10	197	126	0.1			
8/8/19 10:18	15653(ICW1)	0.3	29.6	6.5	5.2	69	125	80	0.1	0.75	10.5	<10
		3.0	29.3	6.4	5.0	65	125	80	0.1			
		6.0	29.3	6.3	4.9	64	125	80	0.1			
8/8/19 10:40	10394(SRT2)	0.3	29.4	6.5	5.2	68	124	80	0.1	0.68	15.3	187
		3.0	29.3	6.5	5.2	67	124	80	0.1			
		6.0	29.3	6.4	5.1	67	124	80	0.1			
		8.0	29.3	6.4	5.2	67	124	80	0.1			

**Segments 0501, 0508 & 0511**





## Segment 0502 - Sabine River Above Tidal

**Description:** The designated segment includes the Sabine River from West Bluff in Orange County to the confluence with Caney Creek in Newton County. The largest tributary is Big Cow Creek (Segment 0513). This is largely a rural area with no major industries or cities.

**Segment 0513 – Big Cow Creek.** The segment reaches from the confluence with the Sabine River in Newton County to a point 4.6 kilometers (2.9 miles) upstream of CR 255 in Newton County.

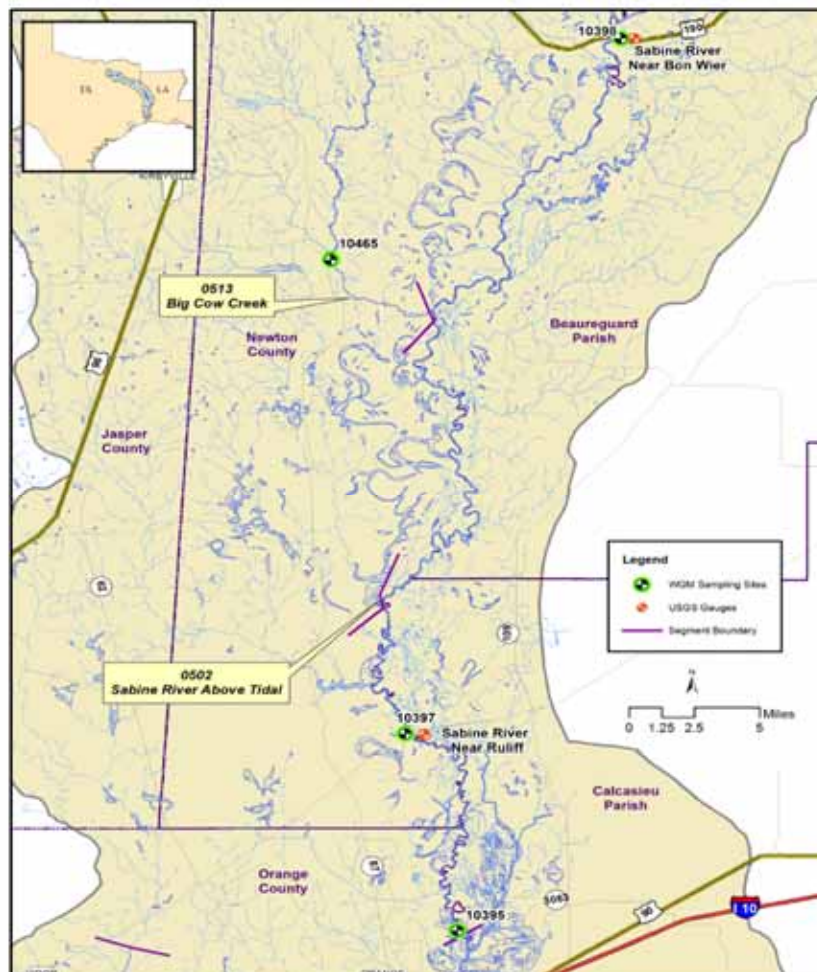
### Segment 0502 USGS Recorded Flows

Date and Time	Station	USGS Station #	Location	Flow (cfs)
8/7/19 08:45	10397(SR2)	08030500	Sabine River near Ruliff, TX	14,900

### Segment 0502 Water Quality

Date and Time	Station	Depth meters	Temp °C	pH SU	DO mg/L	% Sat	Cond μS/cm	TDS mg/L	Secchi meters	Turbidity NTU	<i>E.coli</i> mpn/100mL
8/8/19 11:13	10395(SR1)	0.3	29.6	6.5	5.3	69	136	87	0.43	21.9	9
8/7/19 08:45	10397(SR2)	0.3	29.4	6.5	5.6	74	120	77	0.32	19.6	18
<b>Segment 0513</b>											
8/7/19 09:23	10465(BCC1)	0.3	26.2	5.9	7.0	86	36	23	0.36	22.2	86

### Segments 0502 & 0513



## Segment 0503 - Sabine River Above Caney Creek

**Description:** The designated segment includes the Sabine River from a point immediately upstream of the confluence with Caney Creek in Newton County up to Toledo Bend Dam in Newton County. This is largely a rural area with one major city with a population greater than 5,000 and few industries. Two major tributaries that flow from Louisiana include Bayou Anacoco and Bayou Toro.

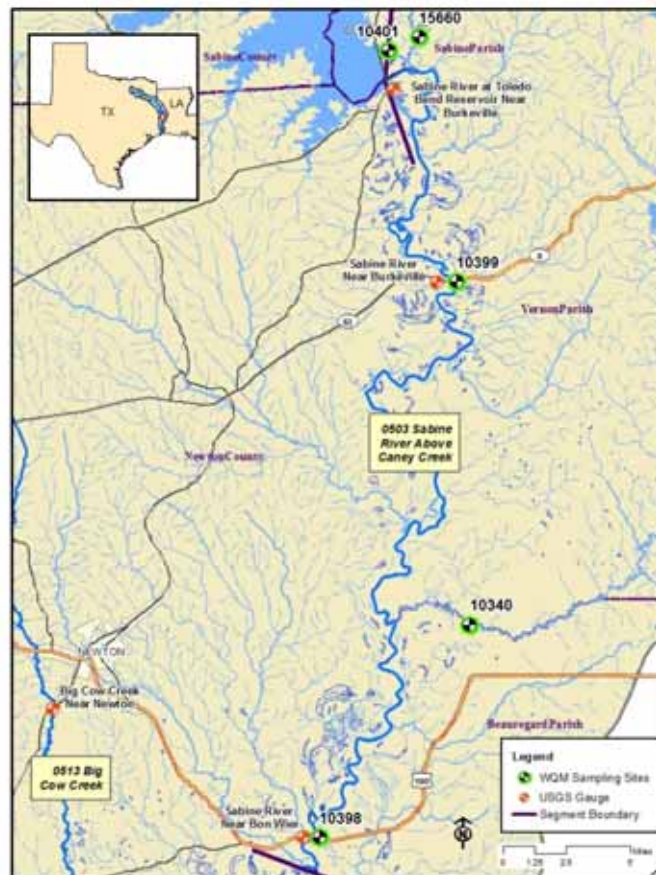
### Segment 0503 USGS Recorded Flows

Date and Time	Station	USGS Station #	Location	Flow (cfs)
8/7/19 11:10	10398(SR3)	08028500	Sabine River near Bon Wier, TX	15,000
8/7/19 10:20	10399(SR5)	08026000	Sabine River near Burkeville, TX	10,100

### Segment 0503 Water Quality

Date and Time	Station	Depth meters	Temp °C	pH SU	DO mg/L	% Sat	Cond μS/cm	TDS mg/L	Secchi meters	Turbidity NTU	<i>E.coli</i> mpn/100mL
8/7/19 11:10	10398(SR3)	0.3	30.1	7.0	6.8	90	125	80	0.56	8.37	4
8/7/19 10:50	10340(BA4)	0.3	29.9	7.1	6.7	89	304	195	0.48	18.7	17
8/7/19 10:20	10399(SR5)	0.3	29.8	6.9	7.0	91	121	77	0.85	5.59	6
8/5/19 13:03	10401(TB6S)	0.3	23.7	6.8	8.5	100	129	83	>1.2	5.34	14
8/5/19 12:50	15660(BT1)	0.3	28.4	7.0	6.6	85	73	47	0.29	25.6	46

### Segment 0503





## Segment 0504 – Toledo Bend Reservoir

**Description:** The designated segment includes the Sabine River from Toledo Bend Dam in Newton County to a point immediately upstream of the confluence of Murvaul Creek in Panola County. Although this area is largely rural, it includes two cities with populations greater than 5,000. Murvaul Creek is a major tributary that enters upstream of the reservoir.

### Segment 0504 Water Quality

Date and Time	Station	Depth meters	Temp °C	pH SU	DO mg/L	% Sat	Cond µS/cm	TDS mg/L	Secchi meters	Turbidity NTU	<i>E.coli</i> mpn/100mL
8/6/19 14:20	10404(TB6A)	0.3	33.4	8.5	9.0	125	124	79	1.8	1.54	<1
		1.0	33.4	8.5	9.0	126	124	79			
		2.0	32.8	8.5	9.1	126	124	79			
		3.0	31.3	8.4	9.3	123	123	79			
		4.0	30.6	8.0	8.7	113	122	79			
		5.0	29.3	7.5	7.1	90	122	79			
		8.0	28.1	7.1	5.3	68	123	79			
		11.0	27.5	6.8	1.1	11	118	76			
		14.0	22.6	6.5	0.4	5	129	82			
		17.0	19.3	6.5	0.3	3	132	85			
		20.0	18.4	6.5	0.3	3	130	83			
		23.0	17.2	6.5	0.2	2	129	82			
		24.0	16.0	6.6	0.2	2	131	84			
8/6/19 08:30	10406(TB6C)	0.3	31.5	7.2	7.8	105	117	74	0.68	5.14	1
		1.0	31.5	7.2	7.6	104	116	74			
		2.0	30.2	6.9	5.1	67	116	74			
		3.0	29.7	6.5	1.4	17	115	74			
8/6/19 13:11	18054(TB6Q)	0.3	32.5	8.5	8.7	120	127	82	0.93	4.66	<1
		1.0	31.8	8.5	8.8	120	128	82			
		2.0	31.1	8.5	9.2	125	128	82			
		3.0	30.8	8.5	9.3	124	128	82			
		4.0	30.6	8.4	8.7	116	127	82			
		5.0	30.3	8.0	8.1	106	126	80			
		6.0	29.8	7.3	4.7	62	125	80			
		7.0	29.4	7.0	1.9	21	124	80			

## Segment 0504 Water Quality Continued

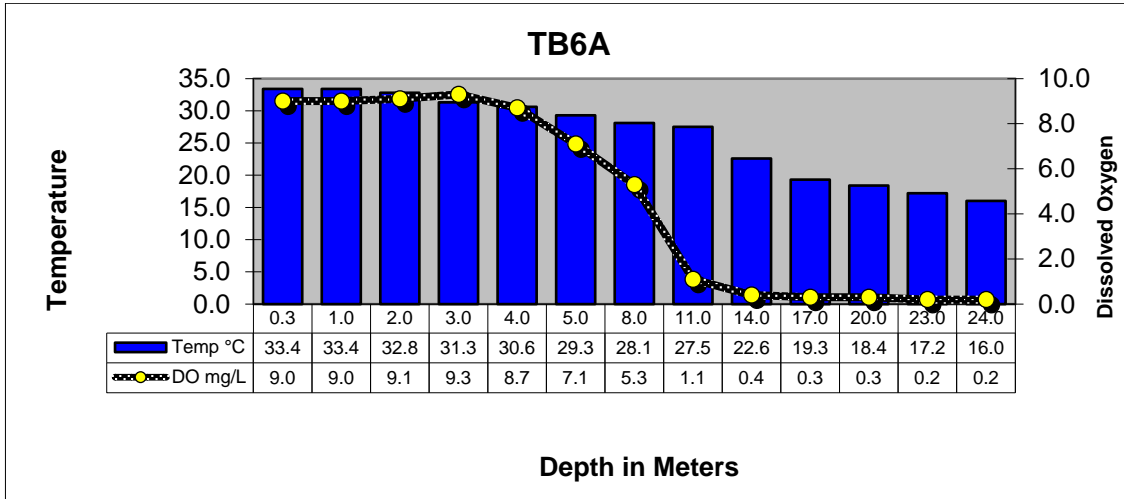
Date and Time	Station	Depth meters	Temp °C	pH SU	DO mg/L	% Sat	Cond µS/cm	TDS mg/L	Secchi meters	Turbidity NTU	<i>E.coli</i> mpn/100mL
8/5/19 10:53	10411(TB6F)	0.3	30.4	8.2	8.5	113	112	72	0.77	4.91	<1
		1.0	30.6	8.1	8.4	112	112	72			
		2.0	30.4	7.6	7.6	101	111	71			
		3.0	30.5	7.2	5.8	77	109	70			
		4.0	28.2	6.6	0.9	10	108	70			
8/6/19 10:55	10402(TB6H)	0.3	30.6	7.9	7.5	100	135	86	1.0	3.23	1
		1.0	30.5	8.0	7.5	100	135	86			
		2.0	30.1	7.9	7.4	97	136	87			
		3.0	29.4	7.5	5.9	77	135	86			
		4.0	29.2	7.2	4.7	60	133	85			
		5.0	28.9	7.0	3.3	42	135	87			
		8.0	28.6	6.8	2.4	27	136	87			
		11.0	28.4	6.7	0.8	10	136	87			
8/5/19 11:17	15659(TB6K)	0.3	31.1	8.0	8.4	113	125	81	0.50	5.34	2
		1.0	31.0	8.0	8.3	111	125	81			
		2.0	30.6	7.6	7.8	99	125	81			
		3.0	30.4	7.2	6.7	88	124	80			
		4.0	30.1	7.0	5.0	66	124	80			
		5.0	29.8	6.7	3.5	46	123	79			
		6.0	29.4	6.5	0.8	10	124	80			
		7.0	29.2	6.4	0.4	5	129	82			
		8.0	29.0	6.4	0.3	4	133	85			
8/5/19 10:25	15655(TB6J)	0.3	31.1	8.7	9.7	130	137	88	0.54	6.41	2
		1.0	31.1	8.6	9.6	129	137	88			
		2.0	30.5	8.0	7.7	100	135	87			
		3.0	30.0	7.1	3.1	40	136	87			

### Segment 0504 Water Quality Continued

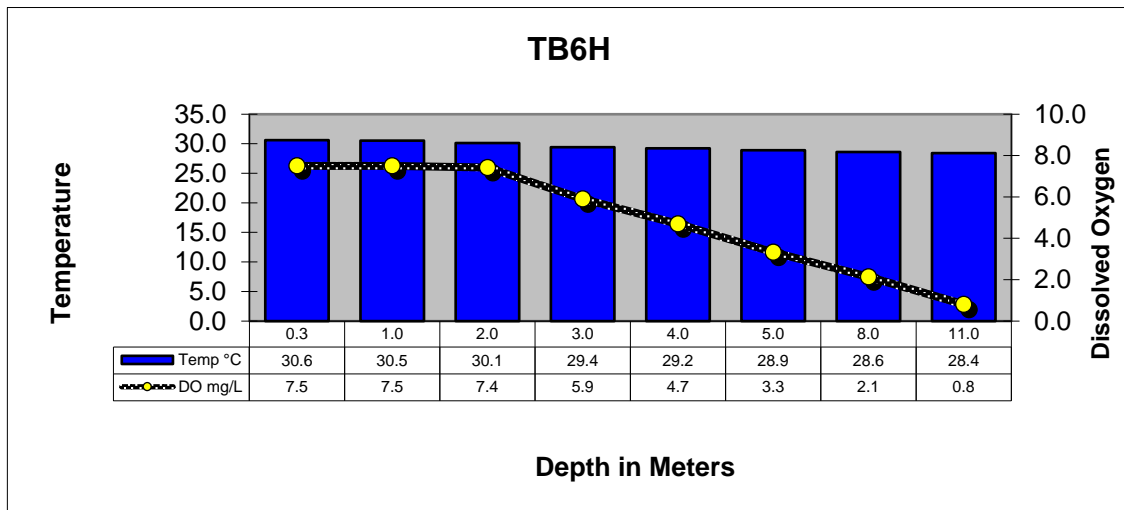
Date and Time	Station	Depth meters	Temp °C	pH SU	DO mg/L	% Sat	Cond µS/cm	TDS mg/L	Secchi meters	Turbidity NTU	<i>E.coli</i> mpn/100mL
8/6/19 11:40	18053(TB6LN)	0.3	32.1	8.7	9.6	131	132	85	0.79	4.43	2
		1.0	31.8	8.8	9.5	130	131	84			
		2.0	31.5	8.6	9.4	125	129	83			
		3.0	31.2	8.5	8.8	118	130	83			
		4.0	30.8	7.9	6.3	84	125	80			
		5.0	29.8	7.1	1.7	17	126	81			
	18052(TB6R)										

No samples or water  
quality taken at this site.  
Unable to launch boat.

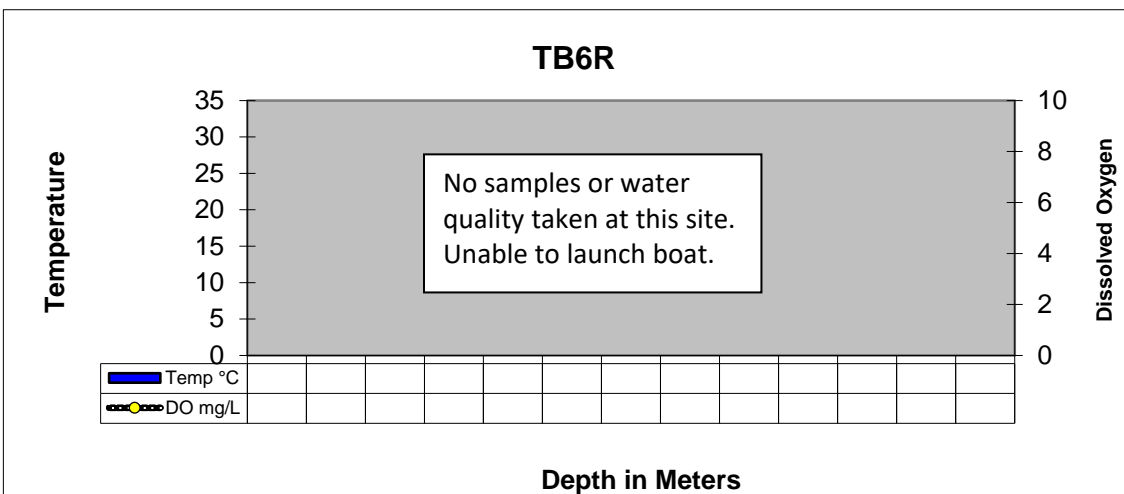
### Toledo Bend Reservoir Profiles



TOLEDO BEND RESERVOIR MAIN LAKE ABOVE THE DAM AT THE OLD RIVER CHANNEL

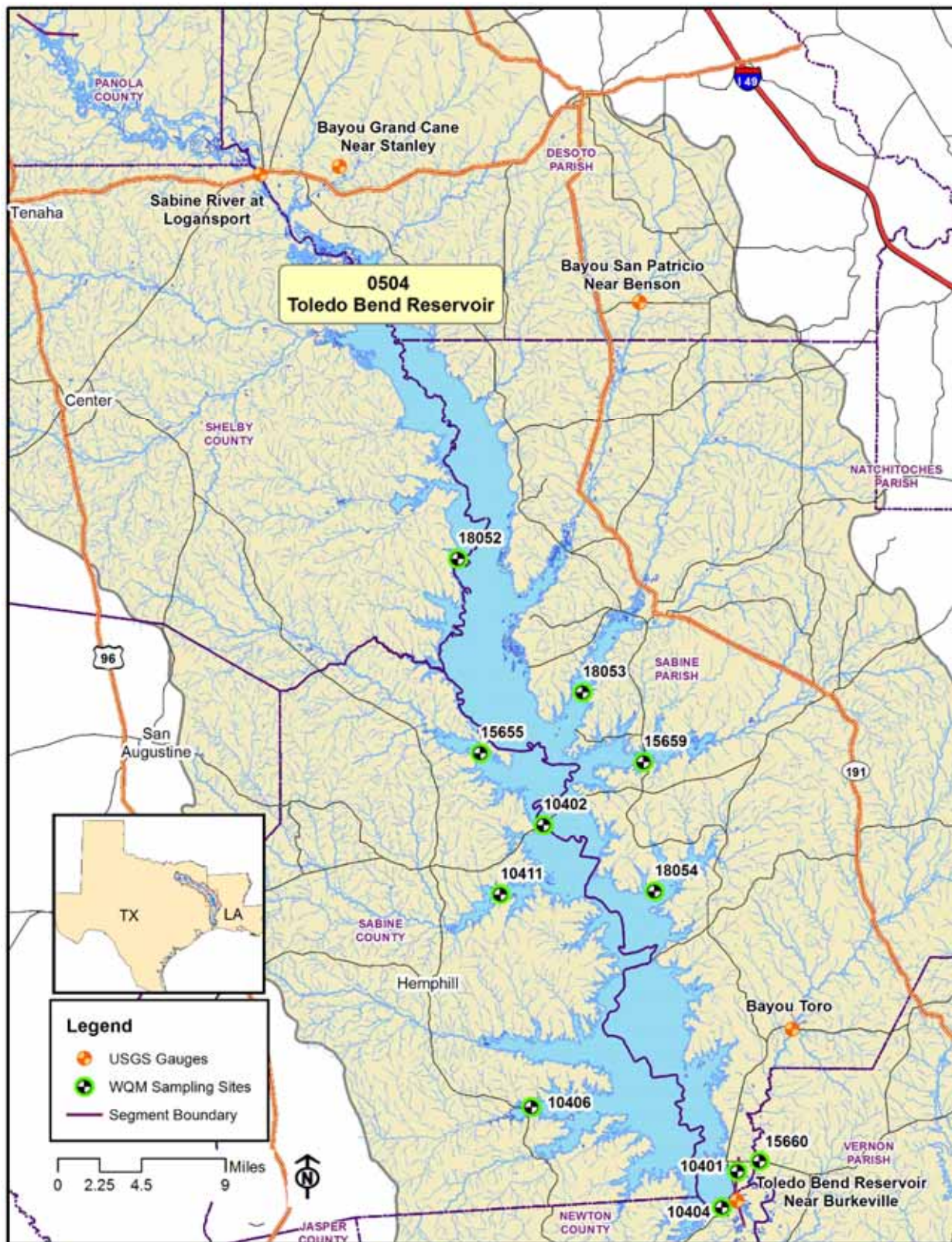


TOLEDO BEND RESERVOIR AT SH 21 NORTHEAST OF MILAM



TOLEDO BEND RESERVOIR AT RAGTOWN

# Segment 0504





## Segment 0505 - Sabine River Above Toledo Bend Reservoir

**Description:** The designated segment includes the Sabine River from a point immediately upstream of the confluence of Murvaul Creek in Panola County to a point 100 meters (110 yards) downstream of US 271 in Gregg County. Segment 0505 is used extensively for water supply and contains the highest concentration of population in the Sabine Basin with eight cities having populations greater than 5,000. Segment 0505 includes a large section of the East Texas Oilfield as well as numerous industries.

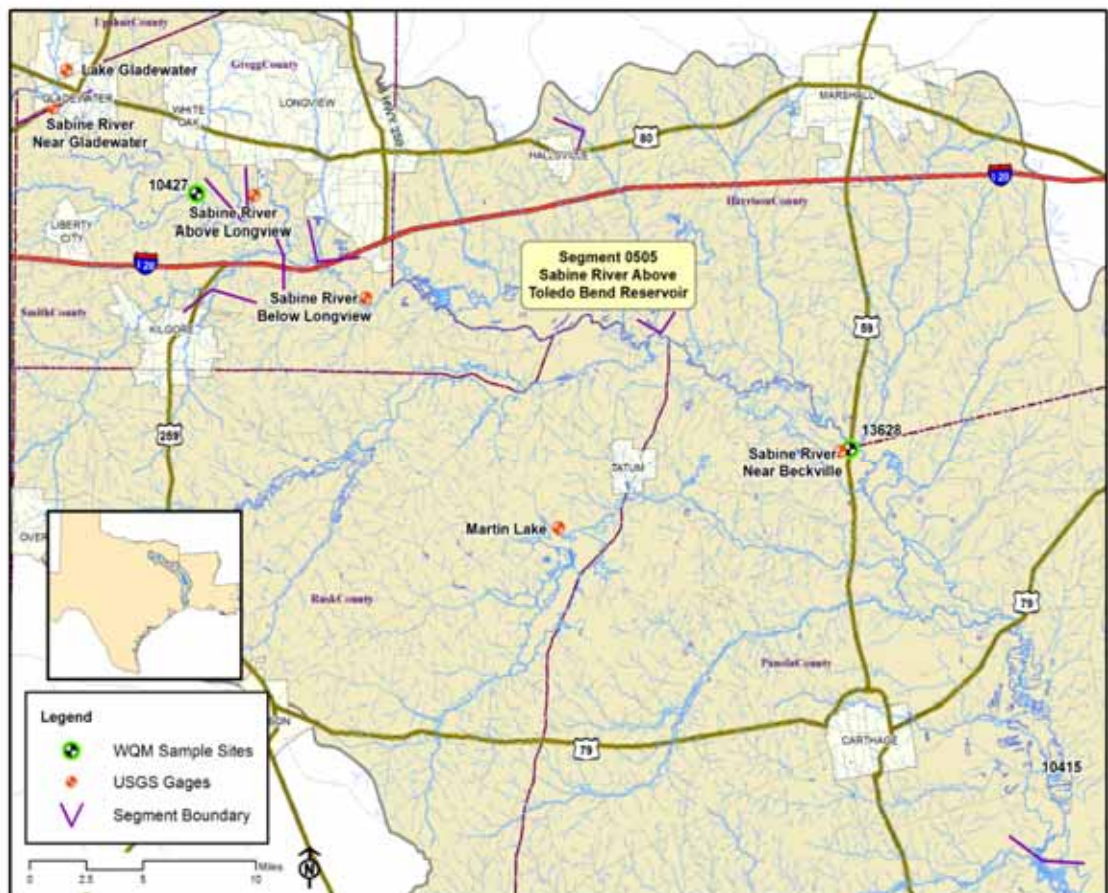
### Segment 0505 USGS Recorded Flows

Date and Time	Station	USGS Station #	Location	Flow (cfs)
8/7/19 09:05	13628(SR11)	08022040	Sabine River near Beckville, TX	348

### Segment 0505 Water Quality

Date and Time	Station	Depth meters	Temp °C	pH SU	DO mg/L	% Sat	Cond µS/cm	TDS mg/L	Secchi meters	Turbidity NTU	<i>E. coli</i> mpn/100mL
8/7/19 09:58	10415(SR10)	0.3	31.1	7.1	7.4	101	357	228	0.10	63.2	4
8/7/19 09:05	13628(SR11)	0.3	31.2	7.1	6.4	87	399	255	0.12	56.7	13
8/7/19 08:15	10427(SR16)	0.3	30.3	7.0	6.5	87	261	167	0.27	40.0	4

### Segment 0505



## Segment 0506 - Sabine River Below Lake Tawakoni

**Description:** The designated segment includes the Sabine River from a point 100 meters (110 yards) downstream of US 271 in Gregg County to Iron Bridge Dam in Rains County. This is largely a rural area with no cities having a population greater than 5,000. Oilfield activities, rural housing developments, and agriculture are in the watershed. The major tributaries include:

**Segment 0514 - Big Sandy Creek.** The segment reaches from the confluence with the Sabine River in Upshur County to a point 2.6 kilometers (1.6 miles) upstream of SH 11 in Hopkins County.

**Segment 0515 - Lake Fork Creek.** The segment reaches from the confluence with the Sabine River in Wood County to Lake Fork Dam in Wood County.

**Segment 0512 - Lake Fork Reservoir.** The segment reaches from Lake Fork Dam in Wood County up to the normal pool elevation of 403 feet.

## Segment 0506 USGS- Recorded Flows

Date and Time	Station	USGS Station #	Location	Flow (cfs)
8/7/19 07:50	10428(SR17)	08020000	Sabine River near Gladewater, TX	294
8/7/19 06:50	10429(SR19)	08019200	Sabine River near Hawkins, TX	147
8/6/19 13:30	10430(SR21)	08018500	Sabine River near Mineola, TX	20
<b>Segment 0514</b>				
8/7/19 07:12	10468(BS1)	08019500	Big Sandy Creek near Big Sandy, TX	37

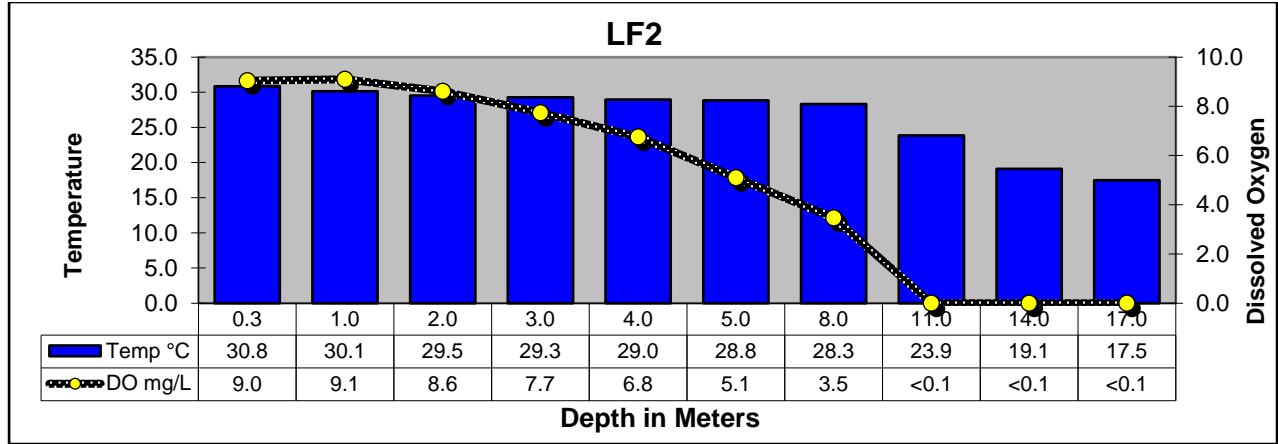
## Segment 0506 Water Quality

Date and Time	Station	Depth meters	Temp °C	pH SU	DO mg/L	% Sat	Cond µS/cm	TDS mg/L	Secchi meters	Turbidity NTU	<i>E. coli</i> mpn/100mL
8/7/19 07:50	10428(SR17)	0.3	30.2	7.1	6.2	84	207	132	0.18	37.0	8
8/7/19 06:50	10429(SR19)	0.3	29.4	7.1	5.9	78	228	146	0.15	4.60	16
8/6/19 13:30	10430(SR21)	0.3	29.0	7.0	4.8	63	417	267	0.21	33.3	13
<b>Segment 0514</b>											
8/7/19 07:12	10468(BS1)	0.3	28.0	6.8	6.1	79	104	66	0.70	15.5	26
<b>Segment 0515</b>											
8/6/19 13:58	10469(LF20)	0.3	29.2	6.9	6.0	78	159	102	0.26	39.0	91

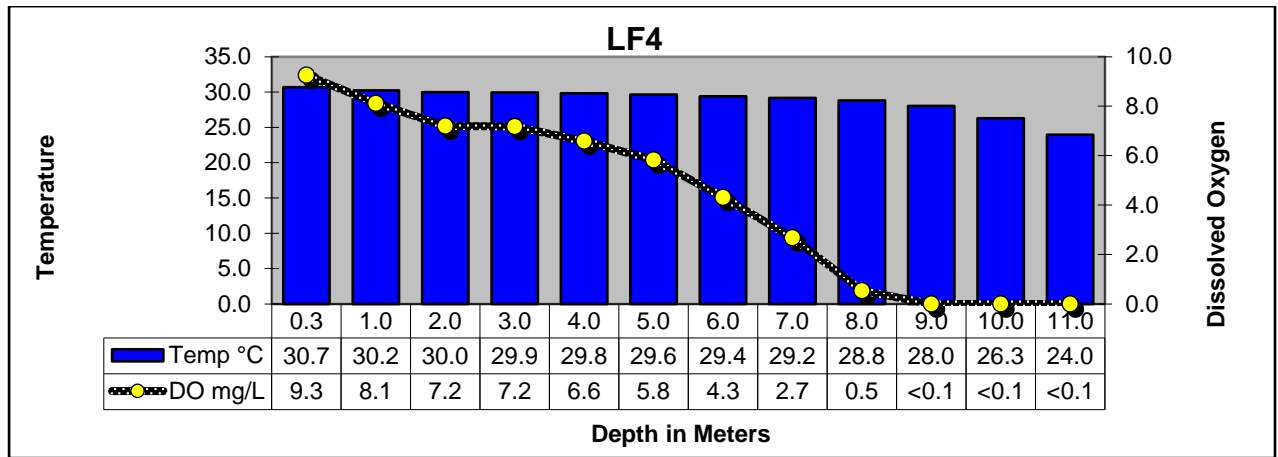
## Segment 0506 Water Quality Continued

Date and Time	Station	Depth meters	Temp °C	pH SU	DO mg/L	% Sat	Cond µS/cm	TDS mg/L	Secchi meters	Turbidity NTU	<i>E. coli</i> mpn/100mL
<b>Segment 0512</b>											
8/6/19 11:55	10458(LF2)	0.3	30.8	8.8	9.0	122	122	78	0.95	5.39	<1
		1.0	30.1	8.9	9.1	121	122	78			
		2.0	29.5	8.5	8.6	112	121	77			
		3.0	29.3	8.0	7.7	101	121	77			
		4.0	29.0	7.6	6.8	86	120	77			
		5.0	28.8	7.2	5.1	65	121	77			
		8.0	28.3	6.9	3.5	44	121	77			
		11.0	23.9	6.7	<0.1	<1	133	85			
		14.0	19.1	6.7	<0.1	<1	149	95			
		17.0	17.5	6.8	<0.1	<1	174	117			
8/6/19 10:52	10462(LF4)	0.3	30.7	8.9	9.3	125	122	78	0.46	5.98	2
		1.0	30.2	8.6	8.1	107	121	78			
		2.0	30.0	8.1	7.2	96	121	77			
		3.0	29.9	8.0	7.2	95	121	77			
		4.0	29.8	7.7	6.6	87	121	77			
		5.0	29.6	7.4	5.8	77	121	77			
		6.0	29.4	7.1	4.3	57	121	77			
		7.0	29.2	6.9	2.7	34	121	77			
		8.0	28.8	6.7	0.5	7	120	76			
		9.0	28.0	6.6	<0.1	<1	127	81			
		10.0	26.3	6.7	<0.1	<1	144	93			
		11.0	24.0	6.9	<0.1	<1	164	105			
8/6/19 11:15	10461(LF3)	0.3	31.0	9.1	9.1	124	125	80	0.40	5.44	2
		1.0	30.8	9.1	9.1	124	125	80			
		2.0	30.6	8.9	8.6	116	125	80			
		3.0	30.5	8.5	7.4	98	123	79			
		4.0	29.6	7.4	1.8	20	123	79			
		5.0	28.9	6.8	0.1	1	123	79			
		6.0	28.5	6.7	<0.1	<1	125	80			
		7.0	28.1	6.6	<0.1	<1	129	82			
		8.0	27.9	6.7	<0.1	<1	140	89			
		9.0	27.7	6.8	<0.1	<1	147	95			

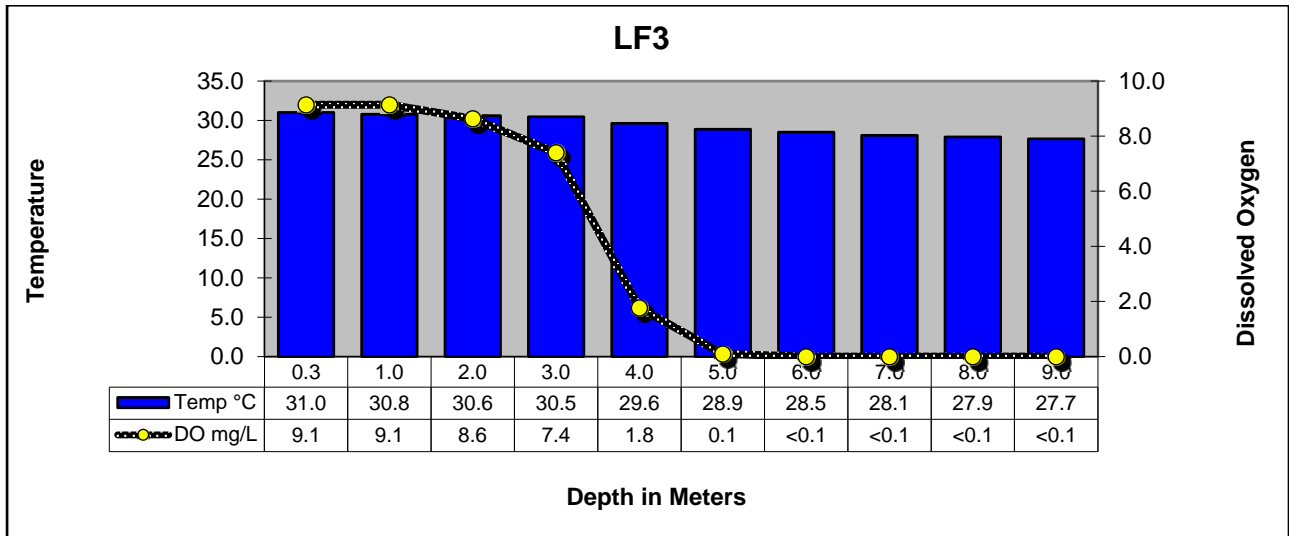
## Lake Fork Reservoir Profiles



LAKE FORK RESERVOIR NEAR DAM IN CREEK CHANNEL

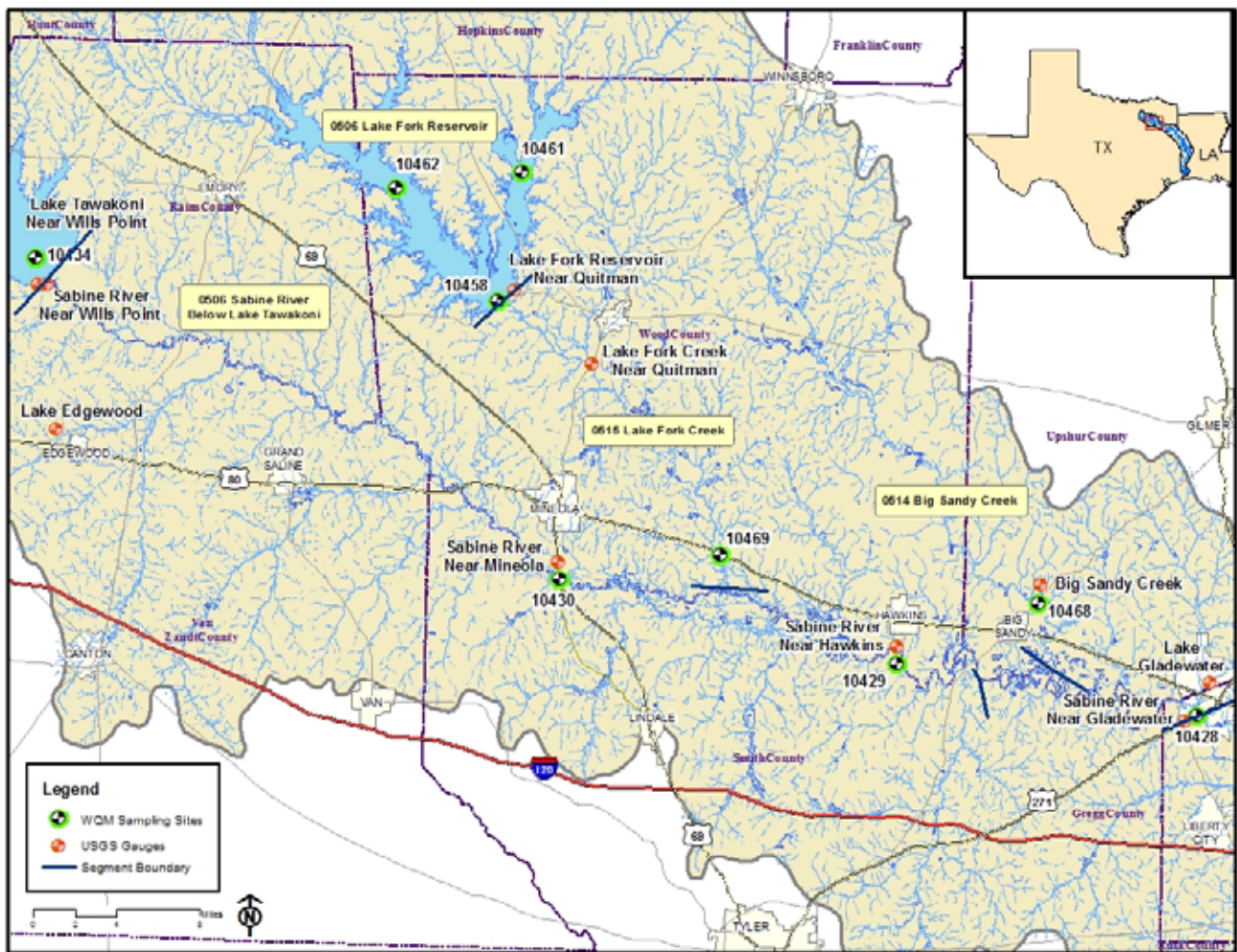


LAKE FORK RESERVOIR MID-COVE IN LAKE FORK CREEK ARM AT FM515



LAKE FORK RESERVOIR MID-ARM IN CANEY CREEK ARM AT FM515

Segments 0506, 0512, 0514 & 0515





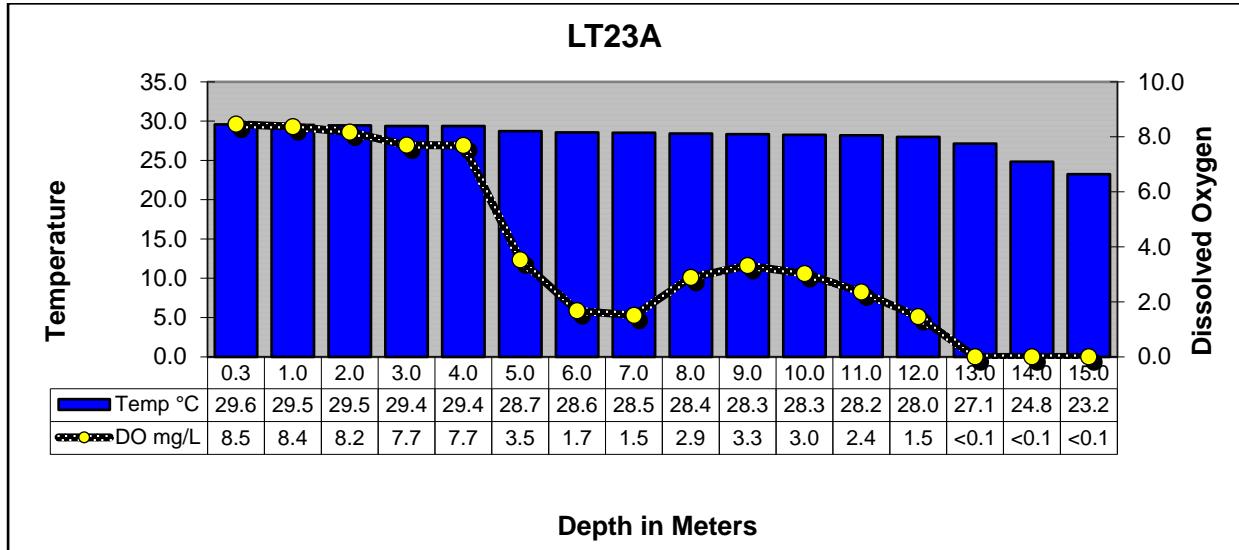
## Segment 0507 - Lake Tawakoni

**Description:** The designated segment includes the impounded Sabine River from Iron Bridge Dam in Rains County up to the normal pool elevation of 437.5 feet. Although much of this segment is rural, it contains two cities with populations greater than 5,000, and one of the four largest cities in the Sabine Basin.

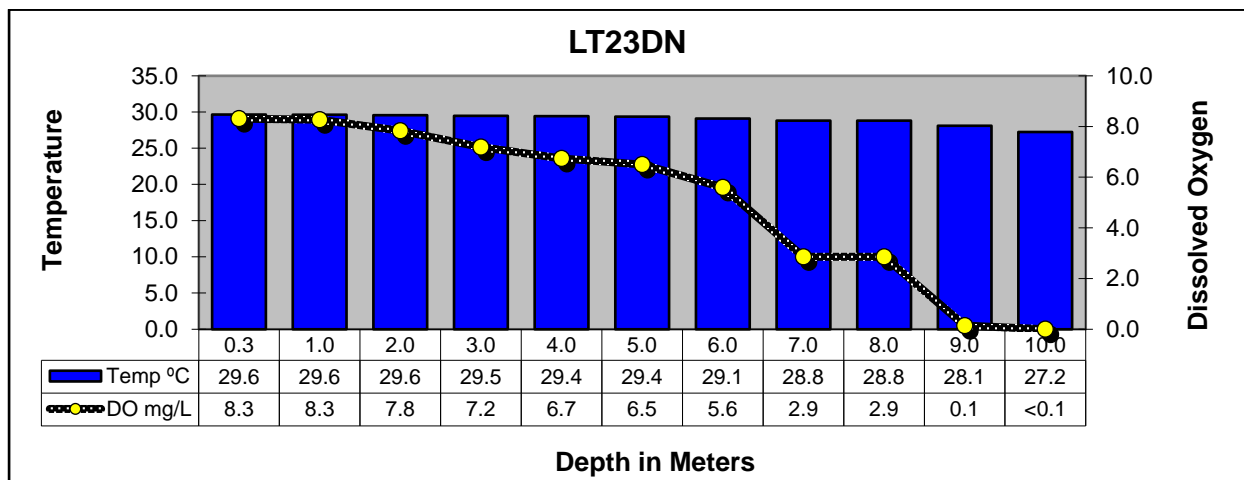
### Segment 0507 Water Quality

Date and Time	Station	Depth meters	Temp °C	pH SU	DO mg/L	% Sat	Cond µS/cm	TDS mg/L	Secchi meters	Turbidity NTU	<i>E. coli</i> mpn/100mL
8/6/19 09:50	10434(LT23A)	0.3	29.6	8.7	8.5	112	169	108	0.70	3.86	<1
		1.0	29.5	8.7	8.4	111	169	108			
		2.0	29.5	8.7	8.2	108	169	108			
		3.0	29.4	8.6	7.7	102	169	108			
		4.0	29.4	8.6	7.7	102	169	108			
		5.0	28.7	7.7	3.5	45	172	110			
		6.0	28.6	7.3	1.7	21	172	110			
		7.0	28.5	7.2	1.5	20	172	110			
		8.0	28.4	7.3	2.9	38	171	109			
		9.0	28.3	7.4	3.3	43	171	109			
		10.0	28.3	7.3	3.0	39	171	109			
		11.0	28.2	7.3	2.4	30	171	109			
		12.0	28.0	7.2	1.5	18	171	109			
		13.0	27.1	7.1	<0.1	<1	177	113			
		14.0	24.8	6.9	<0.1	<1	201	128			
		15.0	23.2	6.8	<0.1	<1	227	145			
8/6/19 09:25	21173(LT23DN)	0.3	29.6	8.9	8.3	111	169	108	0.58	6.45	<1
		1.0	29.6	8.9	8.3	110	169	108			
		2.0	29.6	8.8	7.8	105	169	108			
		3.0	29.5	8.7	7.2	95	169	108			
		4.0	29.4	8.7	6.7	90	170	109			
		5.0	29.4	8.5	6.5	83	170	109			
		6.0	29.1	8.1	5.6	73	171	109			
		7.0	29.0	8.0	5.5	71	171	109			
		8.0	28.8	7.6	2.9	36	172	110			
		9.0	28.1	7.1	0.1	1	183	117			
		10.0	27.2	7.0	<0.1	<1	187	119			
8/6/19 09:04	10437(LT23B)	0.3	30.0	8.9	8.4	113	169	108	0.57	7.55	<1
		1.0	30.0	8.9	8.4	112	169	108			
		2.0	29.9	8.9	8.3	110	169	108			
		3.0	29.9	8.8	8.2	109	169	108			
		4.0	29.9	8.8	7.9	105	169	108			
		5.0	29.9	8.7	7.5	100	170	108			
		6.0	29.8	8.6	6.7	90	170	108			
		7.0	29.4	8.0	4.4	56	173	111			
		8.0	28.7	7.3	0.3	3	178	114			
		9.0	28.2	7.1	<0.1	<1	186	119			

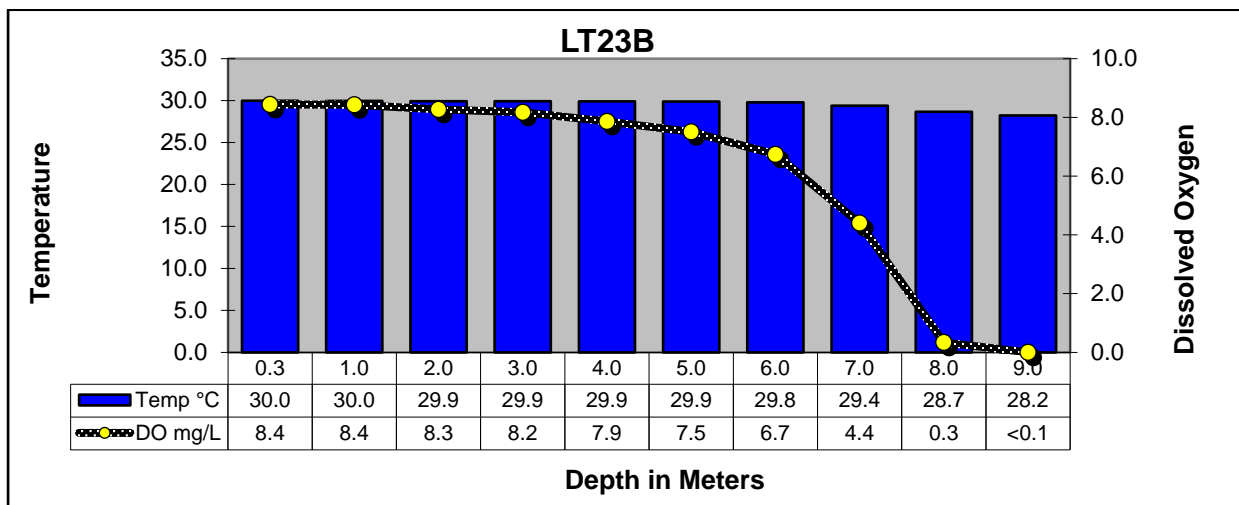
## Lake Tawakoni Reservoir Profiles



LAKE TAWAKONI IN THE MAIN LAKE NEAR THE DAM



LAKE TAWAKONI IN WACO BAY EQUIDISTANT FROM FINGER AND SPRING POINTS



LAKE TAWAKONI AT SH276

# Segment 0507

