
SABINE RIVER AUTHORITY OF TEXAS

TO: INTERESTED PARTIES
FROM: ENVIRONMENTAL SERVICES DIVISION
RE: JULY 2019 MONTHLY WATER QUALITY REPORT

The Environmental Services Field Offices conducted water quality monitoring in the Sabine Basin from July 8th through the 11th. The results of field monitoring are presented in this report¹ and additional data can be found using the Texas Commission on Environmental Quality (TCEQ) [Clean Rivers Program Data Tool](#).

Sabine Basin Tidal (Including Tributaries)

Weather – Air temperatures in the tidal basin were hot with highs in the upper 80s to upper 90s. Low temperatures were in the low to mid 70s. The tidal stations received 0.30 inches of rainfall in the seven days prior to the sampling event.
Tidal Conditions – Surface salinity values were not greater than 2 ppt at any of the six tidal stations. The highest salinity value of 0.4 ppt was recorded at station 15654 (BB1) throughout the water column.

Lower Sabine Basin (Toledo Bend Reservoir and the Sabine River downstream to Tidal)

Weather – Air temperatures in the lower basin were hot with highs in the mid 80s to mid 90s. Low temperatures ranged in the upper 60s to mid 70s. Toledo Bend received 0.16 inches of rainfall during the seven days prior to the sampling event.
Lake Level - The level of Toledo Bend was 170.8 feet with a daily average discharge of 6,163 cfs on the day of sampling. Toledo Bend has a conservation pool level of 172 feet msl. Reservoir profiles indicated stratification of the water column.

Upper Sabine Basin (Lake Tawakoni, Lake Fork Reservoir, and the Sabine River upstream of Toledo Bend)

Weather - Air temperatures in the upper basin were hot with highs in the lower 90s to 100s. Low temperatures were in the low to mid 70s. Lake Fork and Lake Tawakoni received 1.91 and 0.27 inches of rainfall, respectively, during the seven days prior to the sampling event.
Lake Level - The level of Lake Tawakoni was 436.32 feet msl with a release of 6 cfs on the day of sampling. The level of Lake Fork was 401.65 feet msl with a 0 cfs release on the day of sampling. Lake Tawakoni and Lake Fork have conservation pool levels of 437.5 feet msl and 403 feet msl, respectively. Reservoir profiles at Lake Tawakoni and Lake Fork indicated stratification of the water column.

This report and additional links to data for these monitoring stations are available at the [Sabine River Authority of Texas website](#). If you have any questions or comments concerning this report, please contact:

- Debra Malus, Environmental Services Division Manager
409-746-3284 (dmalus@sratx.org)
- *Lower and Tidal Sabine Basin*
Jerry Wiegrefe, Lower Basin Field Office Coordinator
409-746-3284 (jwiegrefe@sratx.org)
- *Upper Sabine Basin*
Terry Wilson, Upper Basin Field Office Coordinator
903-878-2420 (twilson@sratx.org)

¹ Data in this report is considered preliminary until it is available in TCEQ's Surface Water Quality Monitoring Information System database.

SABINE RIVER AUTHORITY OF TEXAS
Monthly Water Quality Report

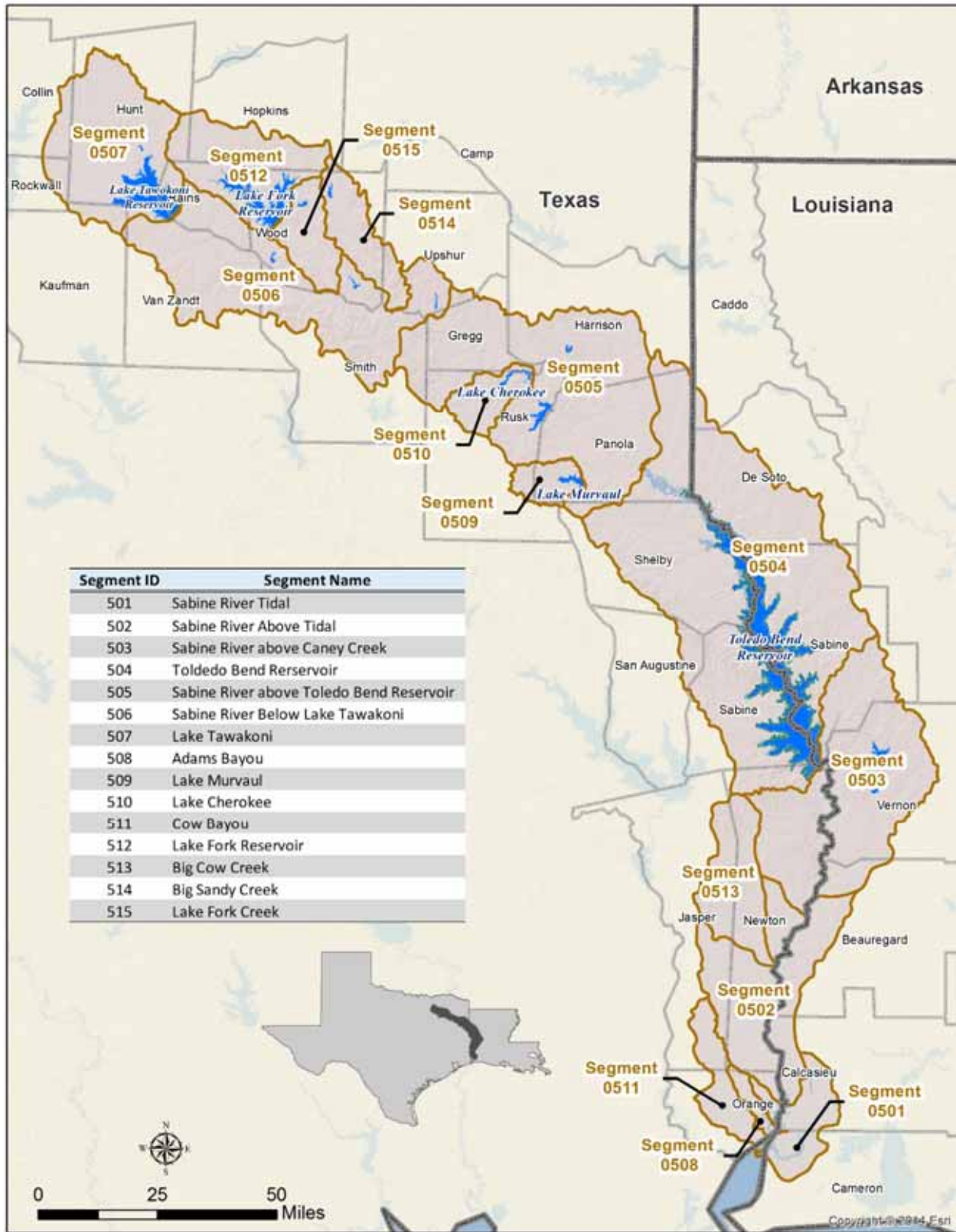
Table of Contents

Fixed Monitoring Stations	4
Segment 0501 – Sabine River Tidal.....	5
Segment 0502 - Sabine River Above Tidal.....	7
Segment 0503 - Sabine River Above Caney Creek	8
Segment 0504 – Toledo Bend Reservoir.....	9
Segment 0505 - Sabine River Above Toledo Bend Reservoir	14
Segment 0506 - Sabine River Below Lake Tawakoni	15
Segment 0507 - Lake Tawakoni.....	19

Table of Figures

Sabine Basin Map	3
Segment 0501	6
Segment 0502.....	7
Segment 0503.....	8
Toledo Bend Reservoir Profiles	12
Segment 0504.....	13
Segment 0505.....	14
Lake Fork Reservoir Profiles.....	17
Segment 0506.....	18
Lake Tawakoni Reservoir Profiles	20
Segment 0507	21

Sabine Basin Map



Current Fixed Monitoring Stations

Segment	Station TCEQ ID (SRA-TX ID)	Location
501	10391 (SRT1)	SABINE RIVER AT CHANNEL CAN 3
501	15654 (BB1)	BLACK BAYOU IN CAMERON PARISH
511	10449 (CB1)	COW BAYOU AT ROUND BUNCH ROAD
508	10441 (AB2)	ADAMS BAYOU AT FM 1006
501	15653 (ICW1)	INTERCOASTAL WATERWAY AT PERRY RIDGE
501	10394 (SRT2)	SABINE RIVER AT IH 10
502	10395 (SR1)	SABINE RIVER 12.00 KM UPSTREAM OF IH 10
502	10397 (SR2)	SABINE RIVER AT SH 12 NORTH OF DEWEYVILLE TX.
513	10465 (BCC1)	BIG COW CREEK AT FM 1416 SOUTH OF BON WIER
503	10398 (SR3)	SABINE RIVER AT US 190 EAST OF BON WIER TX.
503	10340 (BA4)	ANACOCO BAYOU AT LOUISIANA HWY 111 CROSSING SOUTHWEST OF KNIGHT LA.
503	10399 (SR5)	SABINE RIVER AT SH 63 EAST OF BURKEVILLE TX.
503	10401 (TB6S)	SABINE RIVER BELOW TOLEDO BEND RESERVOIR AT RIGHT ABUTMENT OF SPILLWAY FOR DAM
503	15660 (BT1)	BAYOU TORO AT LA SH 392 IN SABINE PARISH SW OF HORNBECK LA.
504	10404 (TB6A)	TOLEDO BEND RESERVOIR MAIN LAKE ABOVE THE DAM AT THE OLD RIVER CHANNEL
504	10406 (TB6C)	TOLEDO BEND RESERVOIR IN SIX MILE BOAT LANE 0.8KM EAST OF SH 87
504	18054 (TB6Q)	TOLEDO BEND RESERVOIR IN NEGREET BAYOU
504	10411 (TB6F)	TOLEDO BEND RESERVOIR IN SUNSHINE BAY NEAR FM 3121 BRIDGE
504	10402 (TB6H)	TOLEDO BEND RESERVOIR AT SH 21 NORTHEAST OF MILAM
504	15659 (TB6K)	TOLEDO BEND RESERVOIR IN LANANA BAYOU AT LOUISIANA SH 191 IN SABINE PARISH LOUISIANA WEST OF MANY
504	15655 (TB6J)	TOLEDO BEND RESERVOIR PATROON BAYOU BRANCH AT FM 276
504	18053 (TB6LN)	TOLEDO BEND RESERVOIR SAN MIGUEL ARM BOAT LANE
504	18052 (TB6R)	TOLEDO BEND RESERVOIR AT RAGTOWN
505	10415 (SR10)	SABINE RIVER AT FM 2517
505	13628 (SR11)	SABINE RIVER AT US 59
505	10427 (SR16)	SABINE RIVER AT SH 42
506	10428 (SR17)	SABINE RIVER AT US 271
506	10429 (SR19)	SABINE RIVER AT SH 14 S. OF HAWKINS
506	10430 (SR21)	SABINE RIVER AT US 69
514	10468 (BS1)	BIG SANDY CREEK AT SH 155
515	10469 (LF20)	LAKE FORK CREEK AT US 80
512	10458 (LF2)	LAKE FORK RESERVOIR NEAR DAM IN CREEK CHANNEL
512	10462 (LF4)	LAKE FORK RESERVOIR MID-COVE IN LAKE FORK CREEK ARM AT FM 515
512	10461 (LF3)	LAKE FORK RESERVOIR MID-ARM IN CANEY CREEK ARM AT FM 515
507	10434 (LT23A)	LAKE TAWAKONI IN THE MAIN LAKE NEAR THE DAM
507	21173 (LT23DN)	LAKE TAWAKONI IN WACO BAY EQUIDISTANT FROM FINGER AND SPRING POINTS 1.17KM BEARING 18.61 DEGREES FROM IRON BRIDGE PUMPING STATION
507	10437 (LT23B)	LAKE TAWAKONI AT SH 276

Segment 0501 – Sabine River Tidal

Description: The designated segment includes the Sabine River from the confluence with Sabine Lake in Orange County to West Bluff in Orange County. Although some areas are quite rural, this part of the Sabine Basin has two cities with populations greater than 5,000 and a variety of industries.

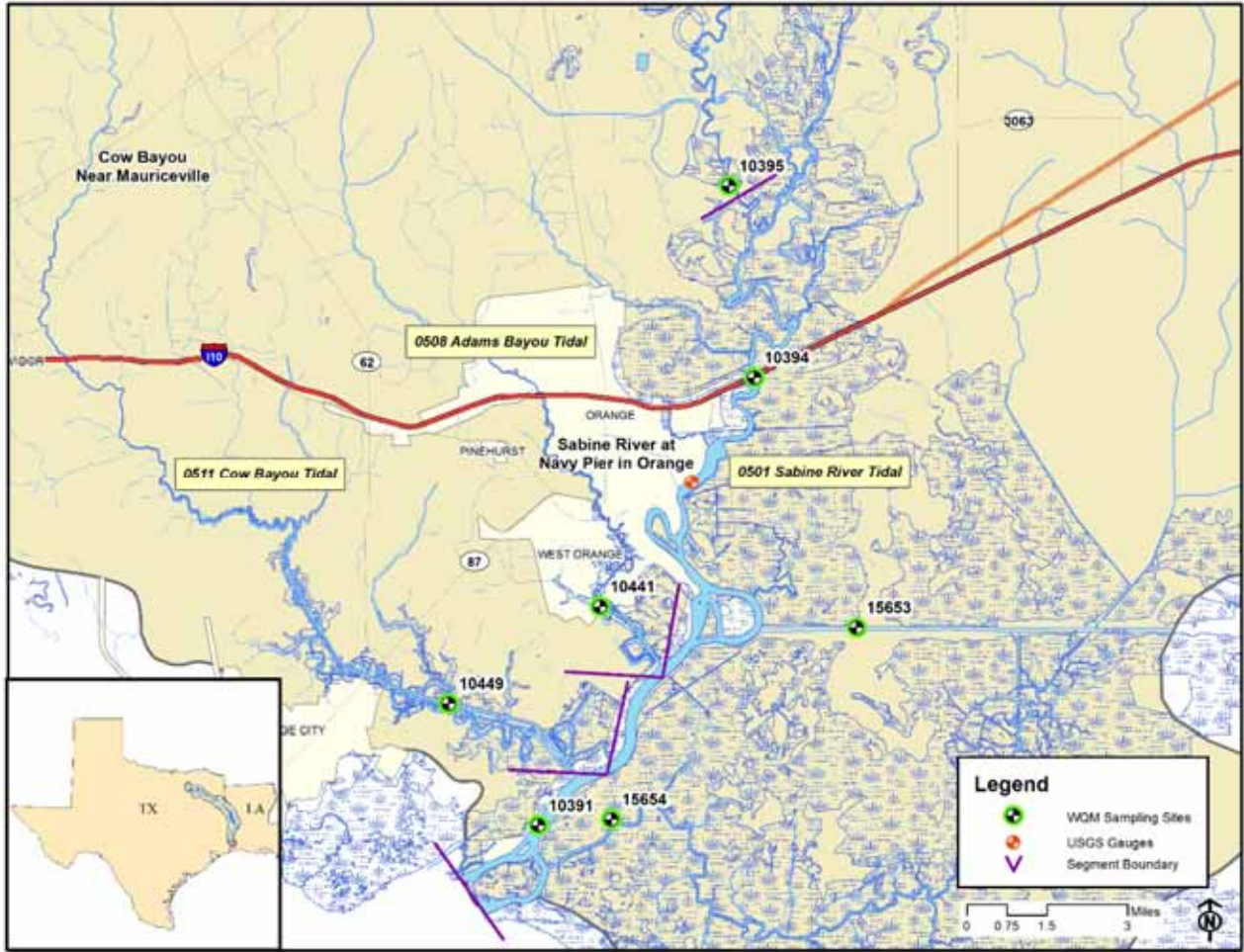
Segment 0508 – Adams Bayou Tidal. The segment reaches from the confluence with the Sabine River in Orange County to a point 1.1 kilometers (0.7 miles) upstream of IH-10 in Orange County.

Segment 0511 – Cow Bayou Tidal. The segment reaches from the confluence with the Sabine River in Orange County to a point 4.8 kilometers (3.0 miles) upstream of IH-10 in Orange County.

Segment 0501 Water Quality

Date and Time	Station	Depth	Temp	pH	DO	% Sat	Cond	TDS	Salinity	Secchi	Turbidity	Enterococcus
		meters	°C	SU	mg/L		µS/cm	mg/L	ppt	meters	NTU	mpn/100mL
7/11/19 09:55	10391(SRT1)	0.3	29.6	6.3	4.7	62	147	94	0.1	0.88	17.0	31
		3.0	29.6	6.3	4.8	63	147	94	0.1			
		6.0	29.6	6.3	4.8	62	147	94	0.1			
		9.0	29.5	6.3	4.7	62	147	94	0.1			
7/11/19 09:37	15654(BB1)	0.3	31.6	6.8	4.6	63	800	512	0.4	0.45	11.4	<10
		1.5	31.6	6.8	4.6	62	800	512	0.4			
		3.0	31.6	6.8	4.6	62	802	513	0.4			
Segment 0511												
7/11/19 09:20	10449(CB1)	0.3	30.6	6.0	2.6	34	129	82	<0.1	0.37	28.6	41
		2.0	30.5	6.0	2.5	32	124	79	<0.1			
		4.0	30.3	5.9	1.8	24	122	78	<0.1			
Segment 0508												
7/11/19 10:13	10441(AB2)	0.3	30.5	6.3	1.6	21	160	102	0.1	0.46	16.8	121
		2.0	29.9	6.2	1.0	13	160	102	0.1			
		4.0	29.8	6.2	0.9	12	156	100	0.1			
7/11/19 10:33	15653(ICW1)	0.3	30.2	6.3	4.7	62	145	93	0.1	0.51	15.9	10
		3.0	30.1	6.3	4.6	62	144	92	0.1			
		6.0	30.1	6.3	4.6	61	145	93	0.1			
7/11/2019 11.02	10394(SRT2)	0.3	29.5	6.4	4.9	64	130	83	<0.1	0.37	22.1	213
		3.0	29.4	6.4	4.9	64	130	83	<0.1			
		6.0	29.4	6.4	4.9	63	130	83	<0.1			
		8.0	29.4	6.4	4.8	63	130	83	<0.1			

Segments 0501, 0508 & 0511



Segment 0502 - Sabine River Above Tidal

Description: The designated segment includes the Sabine River from West Bluff in Orange County to the confluence with Caney Creek in Newton County. The largest tributary is Big Cow Creek (Segment 0513). This is largely a rural area with no major industries or cities.

Segment 0513 – Big Cow Creek. The segment reaches from the confluence with the Sabine River in Newton County to a point 4.6 kilometers (2.9 miles) upstream of CR 255 in Newton County.

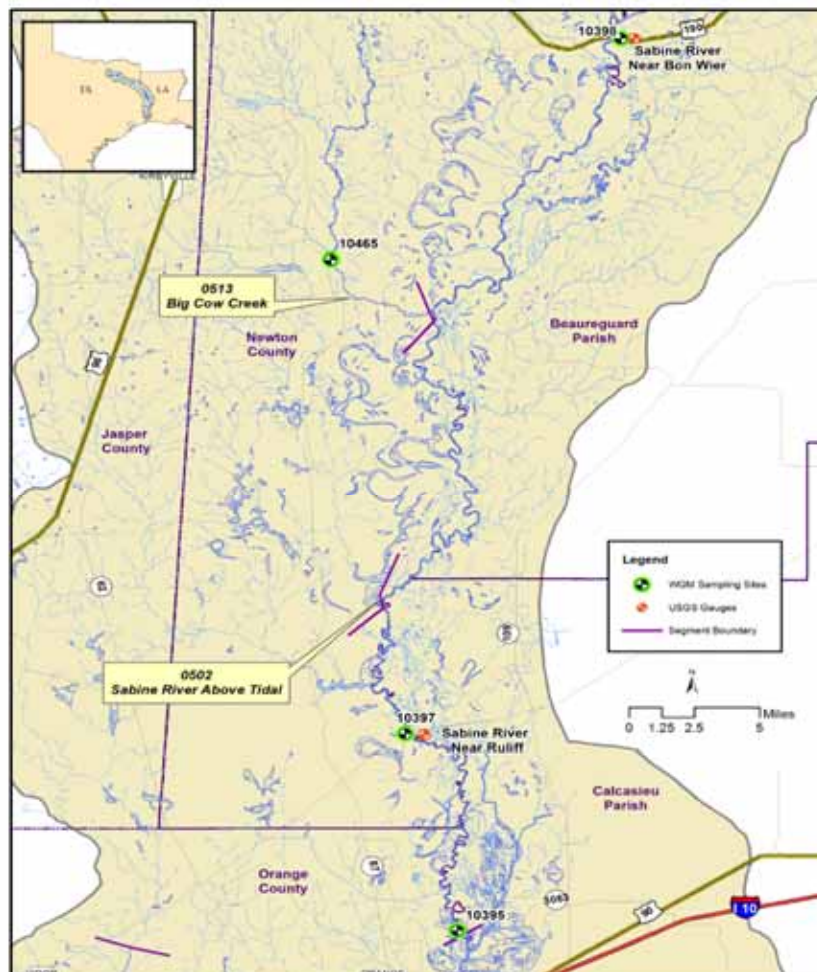
Segment 0502 USGS Recorded Flows

Date and Time	Station	USGS Station #	Location	Flow (cfs)
7/10/19 08:45	10397(SR2)	08030500	Sabine River near Ruliff, TX	13,000

Segment 0502 Water Quality

Date and Time	Station	Depth meters	Temp °C	pH SU	DO mg/L	% Sat	Cond µS/cm	TDS mg/L	Secchi meters	Turbidity NTU	<i>E.coli</i> mpn/100mL
7/11/19 11:35	10395(SR1)	0.3	29.8	6.4	5.0	66	150	96	0.30	28.0	13
7/10/19 08:45	10397(SR2)	0.3	29.4	6.6	5.2	67	123	79	0.45	27.7	10
Segment 0513											
7/10/19 09:26	10465(BCC1)	0.3	26.5	6.2	6.8	84	41	26	0.45	16.2	46

Segments 0502 & 0513



Segment 0503 - Sabine River Above Caney Creek

Description: The designated segment includes the Sabine River from a point immediately upstream of the confluence with Caney Creek in Newton County up to Toledo Bend Dam in Newton County. This is largely a rural area with one major city with a population greater than 5,000 and few industries. Two major tributaries that flow from Louisiana include Bayou Anacoco and Bayou Toro.

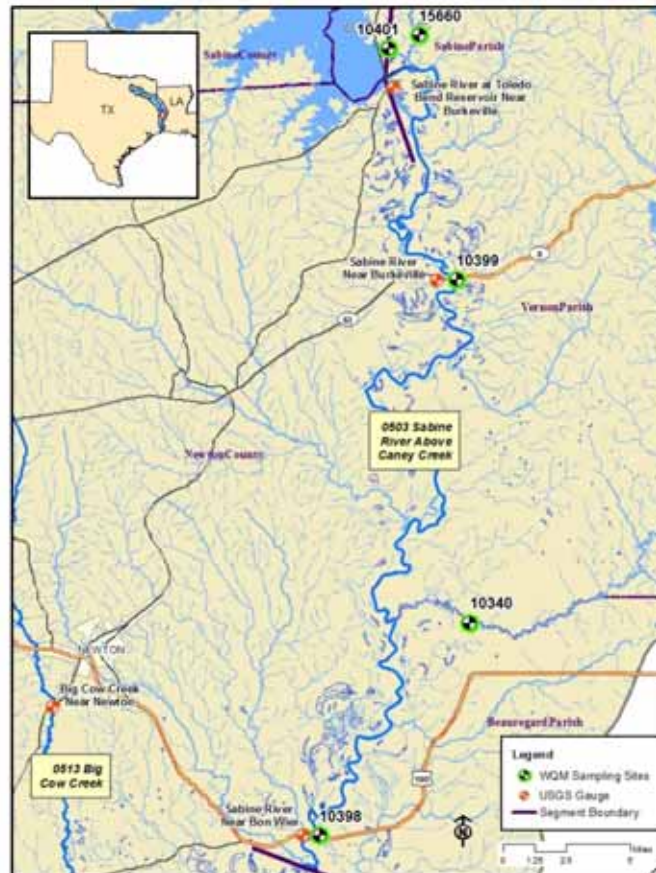
Segment 0503 USGS Recorded Flows

Date and Time	Station	USGS Station #	Location	Flow (cfs)
7/10/19 11:15	10398(SR3)	08028500	Sabine River near Bon Wier, TX	8,870
7/10/19 10:20	10399(SR5)	08026000	Sabine River near Burkeville, TX	7,550

Segment 0503 Water Quality

Date and Time	Station	Depth meters	Temp °C	pH SU	DO mg/L	% Sat	Cond µS/cm	TDS mg/L	Secchi meters	Turbidity NTU	<i>E.coli</i> mpn/100mL
7/10/19 11:15	10398(SR3)	0.3	30.1	6.9	6.9	91	133	85	0.56	12.1	3
7/10/19 10:53	10340(BA4)	0.3	30.2	7.0	6.5	87	261	167	0.34	17.8	12
7/10/19 10:20	10399(SR5)	0.3	29.6	7.0	6.9	89	126	81	>1.2	3.44	5
7/8/19 12:50	10401(TB6S)	0.3	24.8	6.5	8.4	101	107	68	>1.2	4.91	7
7/8/19 12:35	15660(BT1)	0.3	23.8	7.2	7.8	93	85	53	0.37	23.7	49

Segment 0503



Segment 0504 – Toledo Bend Reservoir

Description: The designated segment includes the Sabine River from Toledo Bend Dam in Newton County to a point immediately upstream of the confluence of Murvaul Creek in Panola County. Although this area is largely rural, it includes two cities with populations greater than 5,000. Murvaul Creek is a major tributary that enters upstream of the reservoir.

Segment 0504 Water Quality

Date and Time	Station	Depth meters	Temp °C	pH SU	DO mg/L	% Sat	Cond µS/cm	TDS mg/L	Secchi meters	Turbidity NTU	<i>E.coli</i> mpn/100mL
7/9/19 14:13	10404(TB6A)	0.3	31.8	8.2	8.5	116	108	69	2.0	1.55	1
		1.0	31.8	7.4	8.5	115	108	69			
		2.0	31.4	7.4	8.6	115	108	69			
		3.0	30.3	7.4	8.4	111	107	69			
		4.0	28.8	7.2	8.2	104	107	69			
		5.0	28.1	7.0	7.0	88	107	69			
		8.0	27.9	6.8	3.0	38	105	67			
		11.0	25.9	6.6	1.1	13	107	69			
		14.0	22.7	6.6	0.1	1	107	69			
		17.0	18.5	6.6	<0.1	<1	105	67			
		20.0	17.6	6.6	<0.1	<1	105	67			
		23.0	16.9	6.6	<0.1	<1	105	67			
		25.0	15.1	6.7	<0.1	<1	110	71			
7/9/19 08:24	10406(TB6C)	0.3	30.8	6.4	7.4	99	92	58	1.3	3.24	4
		1.0	30.7	6.5	7.4	99	92	58			
		2.0	30.4	6.5	7.0	92	96	62			
		3.0	28.1	6.2	1.8	19	93	60			
7/9/19 13:13	18054(TB6Q)	0.3	29.6	8.7	9.8	128	107	68	1.3	2.70	1
		1.0	29.6	7.9	9.7	128	107	68			
		2.0	28.7	7.9	10.0	129	106	68			
		3.0	28.2	7.9	9.8	124	106	68			
		4.0	27.8	7.6	9.2	116	107	68			
		5.0	27.2	7.0	5.8	64	108	70			
		6.0	26.2	6.7	4.2	52	109	70			
		7.0	25.8	6.5	1.7	17	109	70			
		8.0	25.2	6.4	0.2	3	112	72			

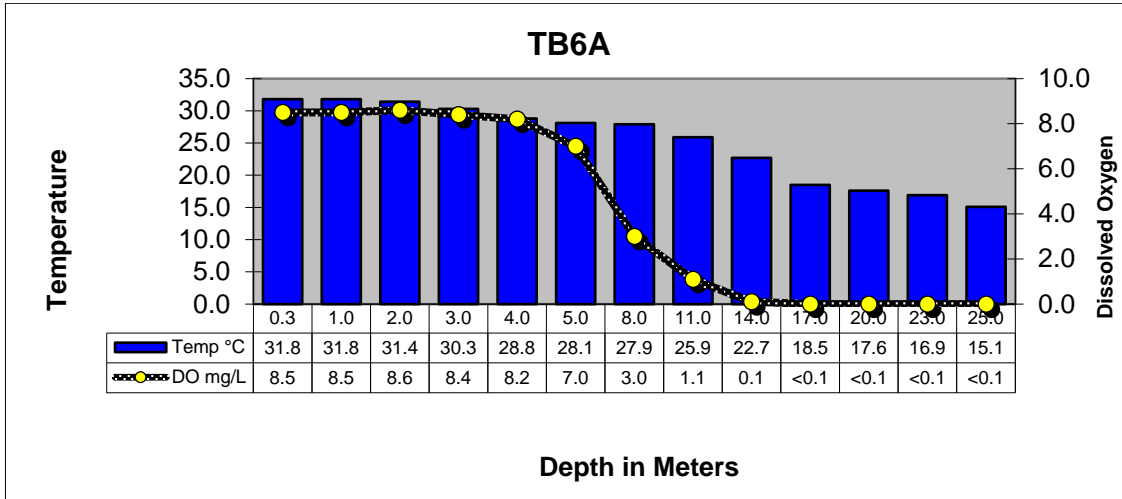
Segment 0504 Water Quality Continued

Date and Time	Station	Depth meters	Temp °C	pH SU	DO mg/L	% Sat	Cond µS/cm	TDS mg/L	Secchi meters	Turbidity NTU	<i>E.coli</i> mpn/100mL
7/8/19 10:42	10411(TB6F)	0.3	31.0	7.0	8.8	117	81	52	0.88	4.85	11
		1.0	31.0	7.2	8.9	119	81	52			
		2.0	29.6	7.0	7.5	96	85	54			
		3.0	28.4	6.5	2.5	31	83	53			
		4.0	27.5	6.2	0.4	5	83	53			
		5.0	26.5	6.0	<0.1	<1	94	60			
7/9/19 11:05	10402(TB6H)	0.3	30.3	8.0	8.2	109	103	66	1.0	3.43	3
		1.0	29.9	6.8	8.2	107	103	66			
		2.0	29.4	6.9	7.7	99	105	67			
		3.0	29.1	6.8	7.1	91	106	67			
		4.0	29.0	6.8	5.8	75	105	67			
		5.0	28.0	6.6	4.7	59	106	67			
		8.0	28.1	6.6	2.8	36	109	70			
		11.0	27.7	6.6	1.2	13	108	69			
		13.0	26.8	6.6	<0.1	<1	113	72			
7/8/19 11:08	15659(TB6K)	0.3	31.8	7.5	9.1	124	94	60	0.74	4.65	6
		1.0	31.7	7.7	9.2	124	94	60			
		2.0	31.1	7.7	8.7	115	93	60			
		3.0	30.3	7.2	5.9	77	92	60			
		4.0	30.0	6.8	4.4	58	92	60			
		5.0	29.2	6.4	1.2	15	91	58			
		6.0	28.7	6.2	0.1	1	94	60			
		7.0	28.2	6.3	<0.1	<1	117	74			
		8.0	27.2	6.3	<0.1	<1	130	84			
		9.0	26.6	6.3	<0.1	<1	135	87			
7/8/19 10:15	15655(TB6J)	0.3	31.8	7.1	8.6	117	103	66	0.92	5.22	3
		1.0	31.7	7.2	8.5	115	102	66			
		2.0	31.3	7.1	8.0	107	102	66			
		3.0	29.9	6.8	3.3	43	102	66			
		4.0	28.1	6.4	0.1	2	104	67			

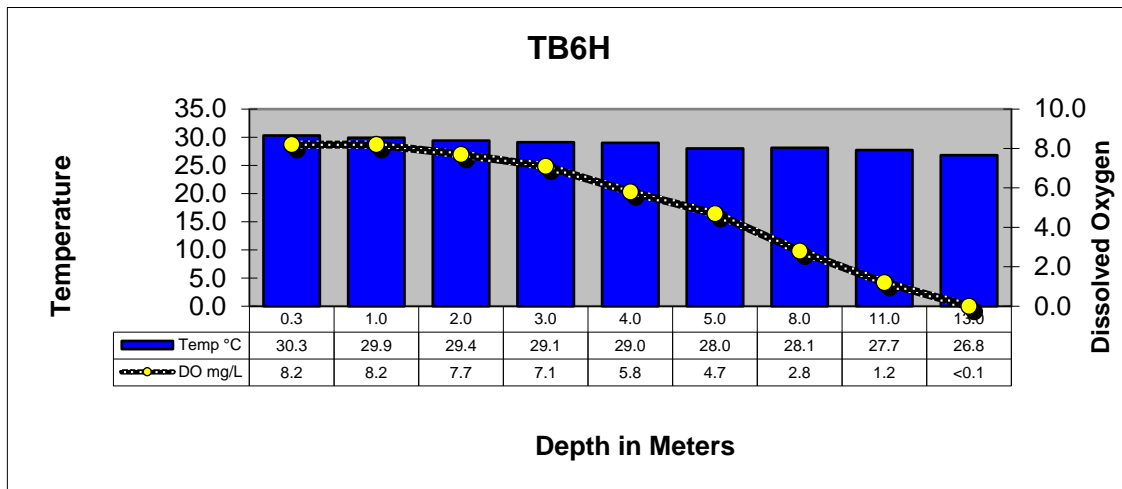
Segment 0504 Water Quality Continued

Date and Time	Station	Depth meters	Temp °C	pH SU	DO mg/L	% Sat	Cond µS/cm	TDS mg/L	Secchi meters	Turbidity NTU	<i>E.coli</i> mpn/100mL
7/9/19 12:20	18053(TB6LN)	0.3	32.8	8.6	9.3	129	90	58	0.90	4.02	1
		1.0	32.3	7.9	9.5	130	91	58			
		2.0	31.7	7.7	9.0	121	94	60			
		3.0	31.1	7.3	7.2	97	91	58			
		4.0	30.4	6.6	1.3	13	87	56			
		5.0	29.8	6.3	0.1	1	89	57			
		6.0	29.1	6.2	<0.1	<1	98	62			
7/9/19 09:50	18052(TB6R)	0.3	30.1	7.5	6.8	90	132	84	0.97	5.51	<1
		1.0	30.0	6.6	6.8	88	131	84			
		2.0	29.9	6.6	6.1	79	131	84			
		3.0	29.9	6.6	6.1	80	131	84			
		4.0	29.7	6.6	4.8	56	130	83			
		5.0	29.3	6.5	3.3	43	130	83			
		6.0	29.2	6.5	3.1	39	130	83			
		7.0	29.0	6.5	2.8	35	130	83			
		8.0	28.9	6.5	2.2	28	131	84			
		9.0	28.7	6.5	1.8	22	137	87			
		10.0	28.7	6.6	1.6	20	140	89			
		11.0	28.4	6.6	0.8	11	141	90			
		12.0	28.5	6.6	0.3	4	145	92			

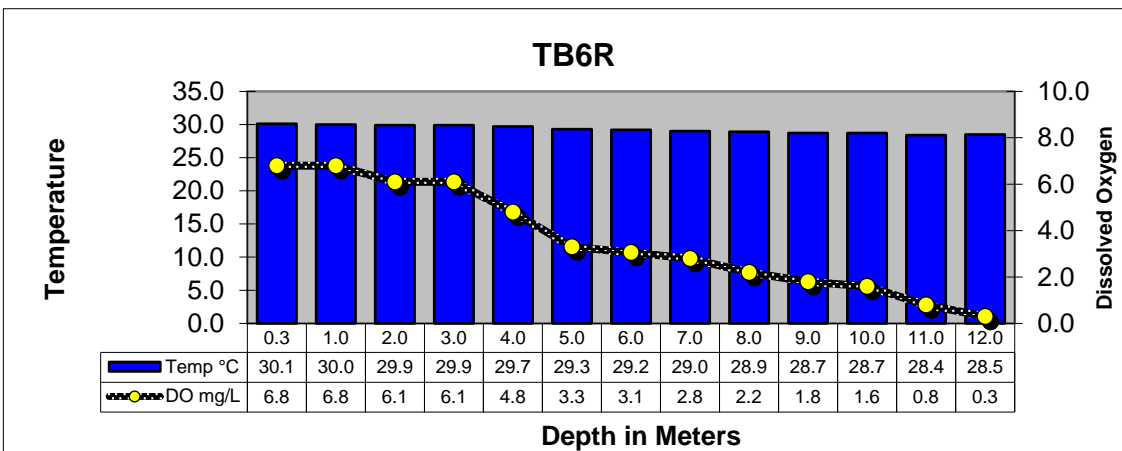
Toledo Bend Reservoir Profiles



TOLEDO BEND RESERVOIR MAIN LAKE ABOVE THE DAM AT THE OLD RIVER CHANNEL

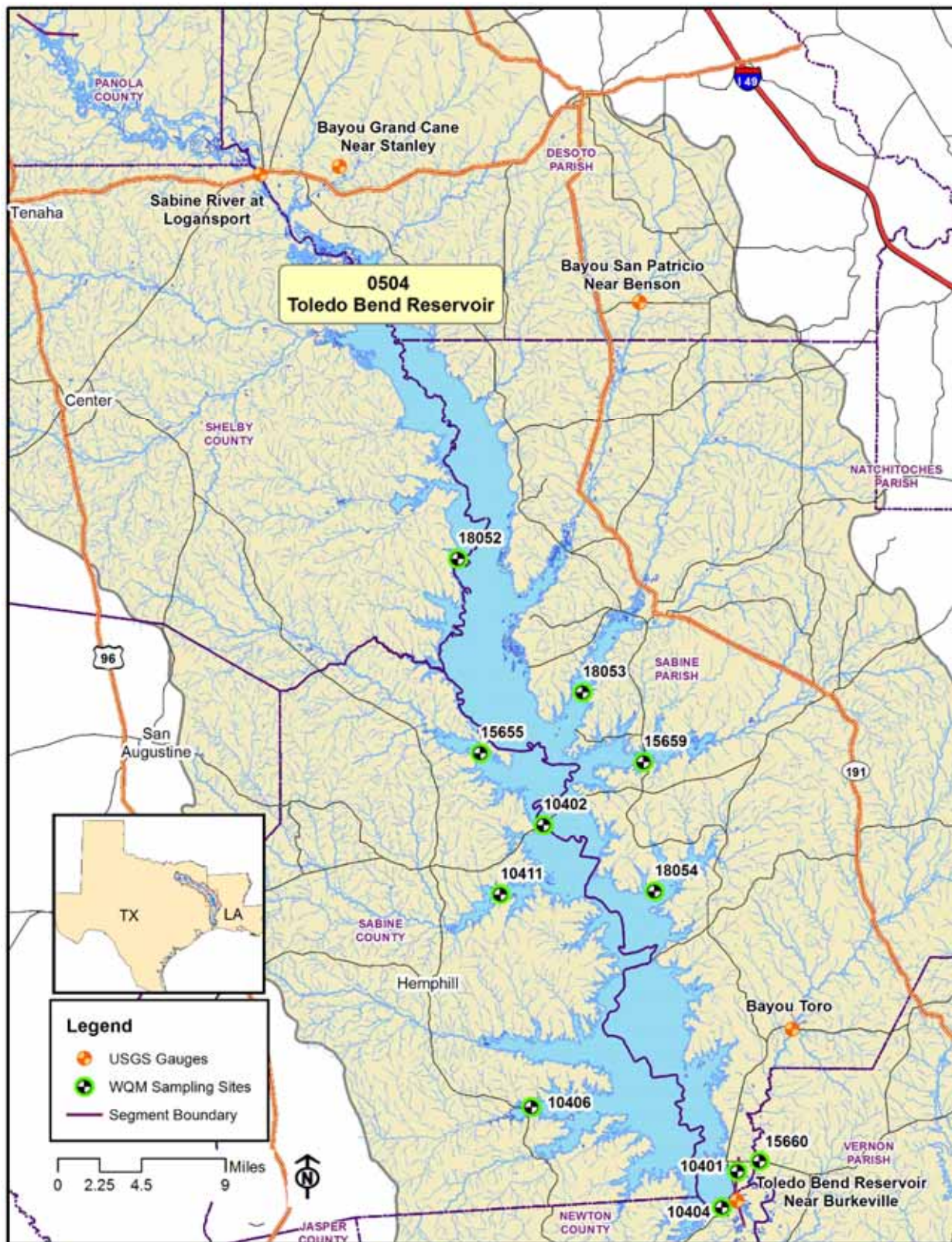


TOLEDO BEND RESERVOIR AT SH 21 NORTHEAST OF MILAM



TOLEDO BEND RESERVOIR AT RAGTOWN

Segment 0504



Segment 0505 - Sabine River Above Toledo Bend Reservoir

Description: The designated segment includes the Sabine River from a point immediately upstream of the confluence of Murvaul Creek in Panola County to a point 100 meters (110 yards) downstream of US 271 in Gregg County. Segment 0505 is used extensively for water supply and contains the highest concentration of population in the Sabine Basin with eight cities having populations greater than 5,000. Segment 0505 includes a large section of the East Texas Oilfield as well as numerous industries.

Segment 0505 USGS Recorded Flows

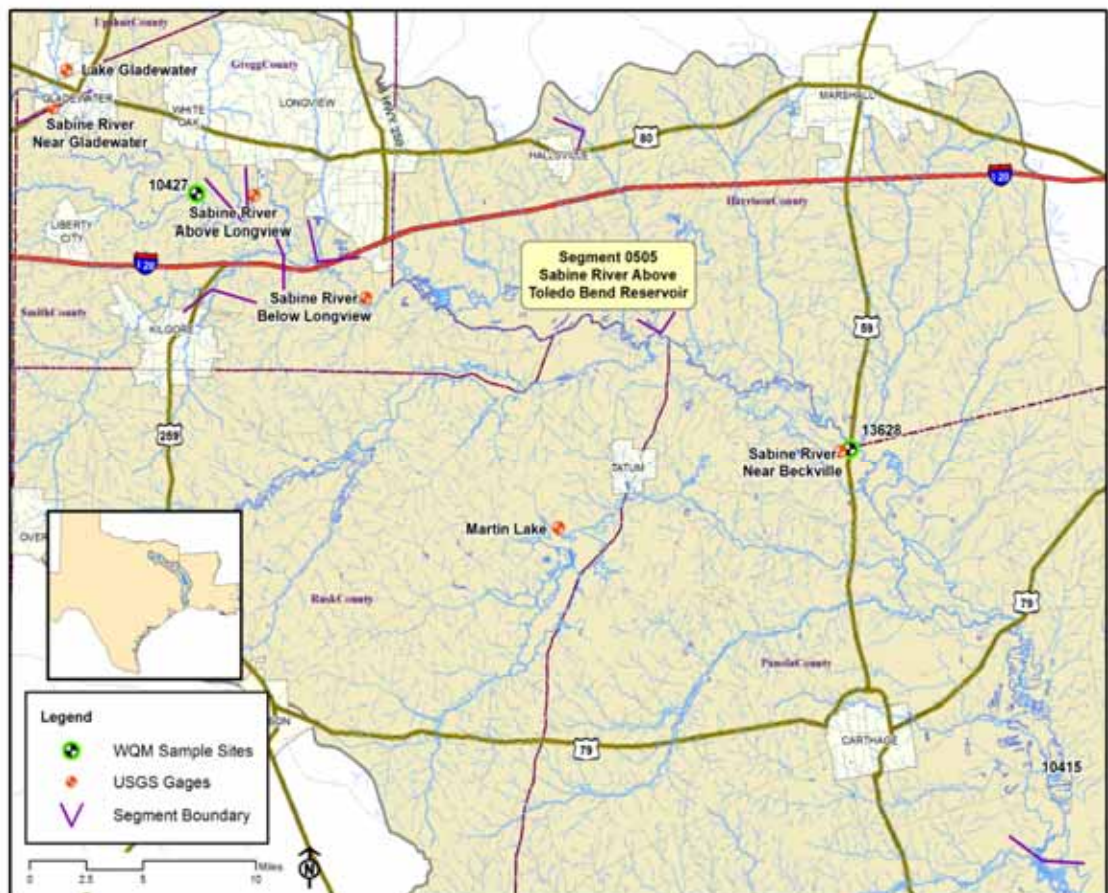
Date and Time	Station	USGS Station #	Location	Flow (cfs)
7/10/19 09:25	13628(SR11)	08022040	Sabine River near Beckville, TX	8,360

Segment 0505 Water Quality

Date and Time	Station	Depth meters	Temp °C	pH SU	DO mg/L	% Sat	Cond µS/cm	TDS mg/L	Secchi meters	Turbidity NTU	<i>E. coli</i> mpn/100mL
7/10/19 09:58	10415(SR10)	0.3	28.7	7.1	6.0	78	168	108	NR*	31.7	10
7/10/19 09:25	13628(SR11)	0.3	28.6	7.0	5.7	74	175	112	0.13	34.0	18
7/10/19 08:04	10427(SR16)	0.3	28.6	6.9	5.0	65	173	110	0.19	20.8	50

*No Result

Segment 0505



Segment 0506 - Sabine River Below Lake Tawakoni

Description: The designated segment includes the Sabine River from a point 100 meters (110 yards) downstream of US 271 in Gregg County to Iron Bridge Dam in Rains County. This is largely a rural area with no cities having a population greater than 5,000. Oilfield activities, rural housing developments, and agriculture are in the watershed. The major tributaries include:

Segment 0514 - Big Sandy Creek. The segment reaches from the confluence with the Sabine River in Upshur County to a point 2.6 kilometers (1.6 miles) upstream of SH 11 in Hopkins County.

Segment 0515 - Lake Fork Creek. The segment reaches from the confluence with the Sabine River in Wood County to Lake Fork Dam in Wood County.

Segment 0512 - Lake Fork Reservoir. The segment reaches from Lake Fork Dam in Wood County up to the normal pool elevation of 403 feet.

Segment 0506 USGS- Recorded Flows

Date and Time	Station	USGS Station #	Location	Flow (cfs)
7/10/19 07:30	10428(SR17)	08020000	Sabine River near Gladewater, TX	4,360
7/10/19 06:40	10429(SR19)	08019200	Sabine River near Hawkins, TX	2,290
7/9/19 13:20	10430(SR21)	08018500	Sabine River near Mineola, TX	1,800
Segment 0514				
7/10/19 07:05	10468(BS1)	08019500	Big Sandy Creek near Big Sandy, TX	90

Segment 0506 Water Quality

Date and Time	Station	Depth meters	Temp °C	pH SU	DO mg/L	% Sat	Cond µS/cm	TDS mg/L	Secchi meters	Turbidity NTU	<i>E. coli</i> mpn/100mL
7/10/19 07:30	10428(SR17)	0.3	28.7	6.9	5.2	68	172	110	0.18	24.8	86
7/10/19 06:40	10429(SR19)	0.3	28.6	7.2	5.6	73	180	115	0.15	27.0	30
7/9/19 13:20	10430(SR21)	0.3	28.5	7.2	5.5	71	186	119	0.23	76.7	30
Segment 0514											
7/10/19 07:05	10468(BS1)	0.3	27.9	6.8	5.7	73	114	74	0.42	16.5	89
Segment 0515											
7/9/19 13:50	10469(LF20)	0.3	29.0	6.8	4.9	64	196	125	NR*	79.2	55

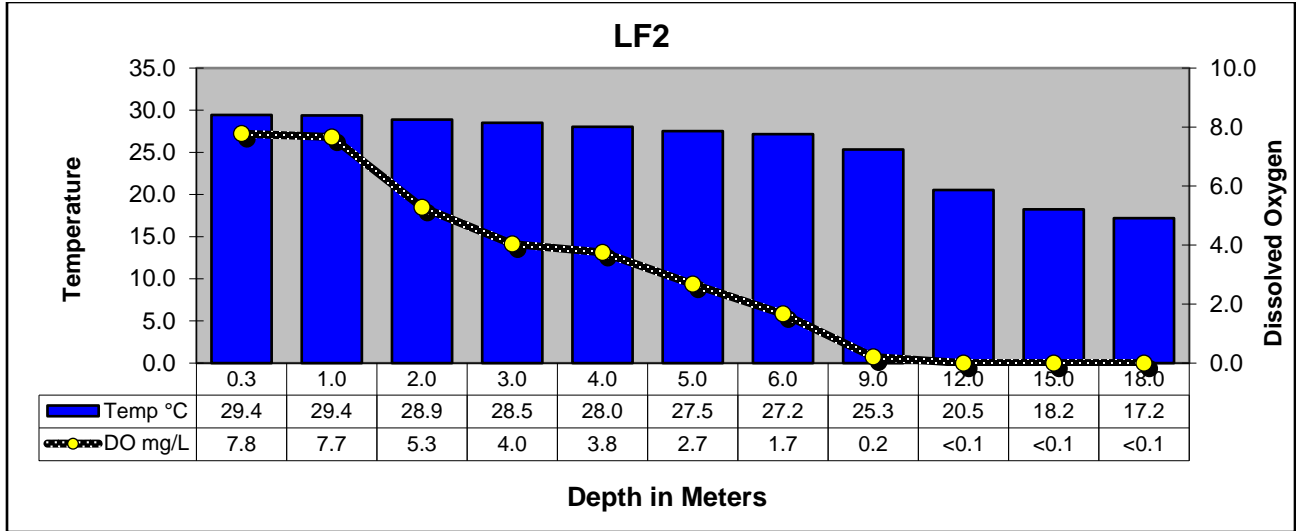
*No Result

Segment 0506 Water Quality Continued

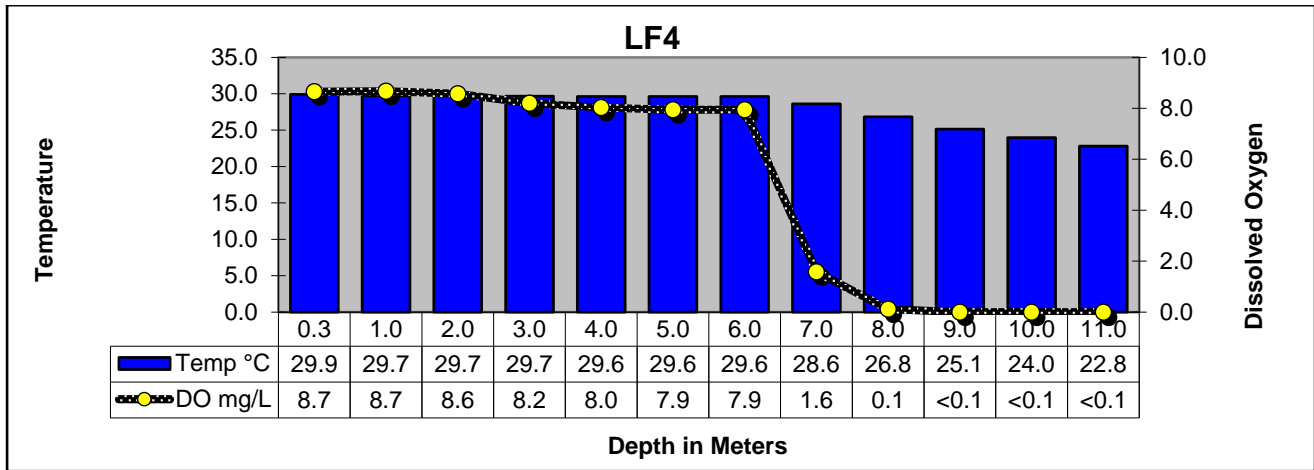
Date and Time	Station	Depth meters	Temp °C	pH SU	DO mg/L	% Sat	Cond µS/cm	TDS mg/L	Secchi meters	Turbidity NTU	<i>E. coli</i> mpn/100mL
Segment 0512											
7/11/19 12:00	10458(LF2)	0.3	29.4	7.9	7.8	103	118	76	1.10	6.48	1
		1.0	29.4	7.9	7.7	101	118	76			
		2.0	28.9	7.4	5.3	66	117	75			
		3.0	28.5	7.1	4.0	52	117	75			
		4.0	28.0	7.0	3.8	48	118	76			
		5.0	27.5	6.8	2.7	34	117	75			
		6.0	27.2	6.8	1.7	21	117	75			
		9.0	25.3	6.6	0.2	2	121	77			
		12.0	20.5	6.6	<0.1	<1	132	85			
		15.0	18.2	6.6	<0.1	<1	142	91			
		18.0	17.2	6.8	<0.1	<1	164	105			
7/9/19 10:55	10462(LF4)	0.3	29.9	8.7	8.7	116	117	75	0.68	4.97	1
		1.0	29.7	8.8	8.7	115	118	75			
		2.0	29.7	8.7	8.6	113	117	75			
		3.0	29.7	8.5	8.2	108	117	75			
		4.0	29.6	8.4	8.0	106	117	75			
		5.0	29.6	8.4	7.9	105	117	75			
		6.0	29.6	8.3	7.9	105	117	75			
		7.0	28.6	7.2	1.6	15	114	73			
		8.0	26.8	6.8	0.1	1	118	76			
		9.0	25.1	6.8	<0.1	<1	127	81			
		10.0	24.0	6.8	<0.1	<1	132	84			
		11.0	22.8	6.9	<0.1	<1	148	95			
7/19/19 11:20	10461(LF3)	0.3	30.4	8.6	8.1	109	116	75	0.63	5.32	NR*
		1.0	30.4	8.6	8.1	109	116	75			
		2.0	30.3	8.5	8.1	108	116	75			
		3.0	30.3	8.5	8.0	107	116	75			
		4.0	30.3	8.4	8.0	106	116	75			
		5.0	30.1	8.1	7.4	99	116	75			
		6.0	29.9	7.3	4.5	56	116	75			
		7.0	28.9	6.9	0.5	5	124	80			
		8.0	26.4	6.8	<0.1	<1	134	86			
		9.0	25.9	6.8	<0.1	<1	135	86			

*No Result

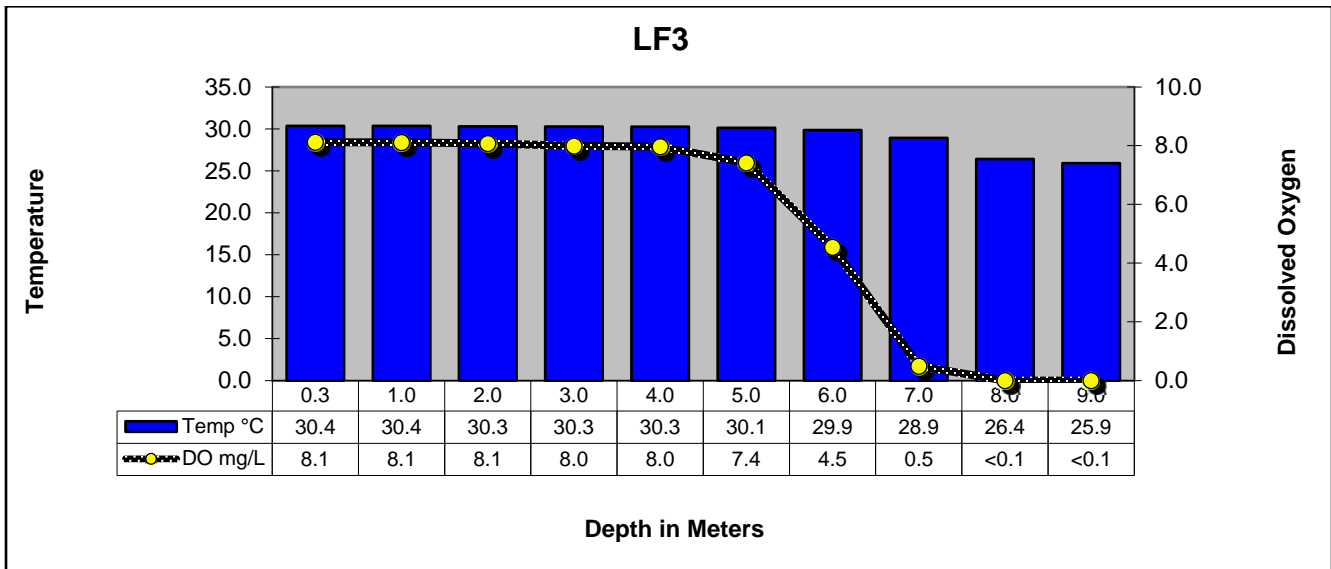
Lake Fork Reservoir Profiles



LAKE FORK RESERVOIR NEAR DAM IN CREEK CHANNEL

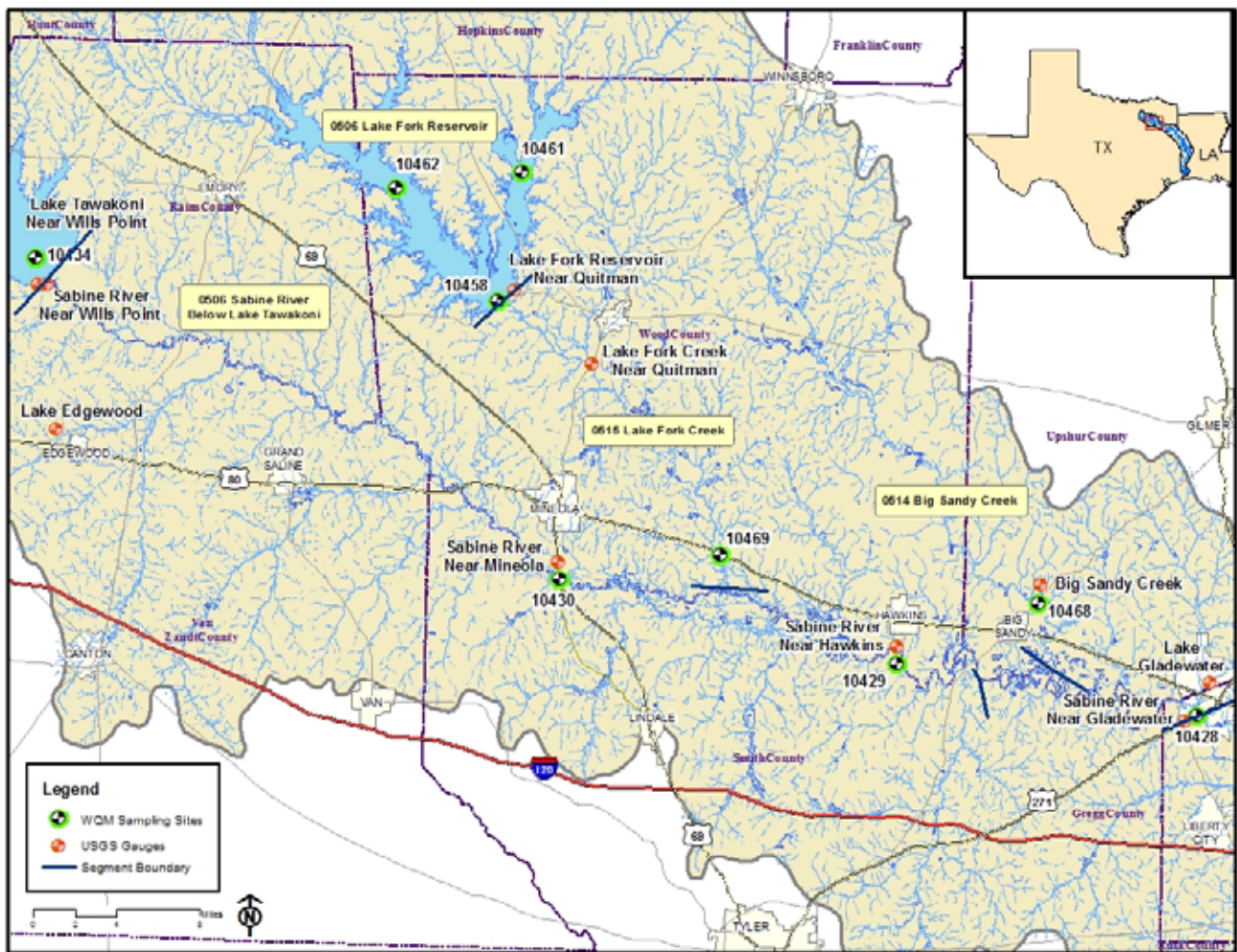


LAKE FORK RESERVOIR MID-COVE IN LAKE FORK CREEK ARM AT FM515



LAKE FORK RESERVOIR MID-ARM IN CANEY CREEK ARM AT FM515

Segments 0506, 0512, 0514 & 0515



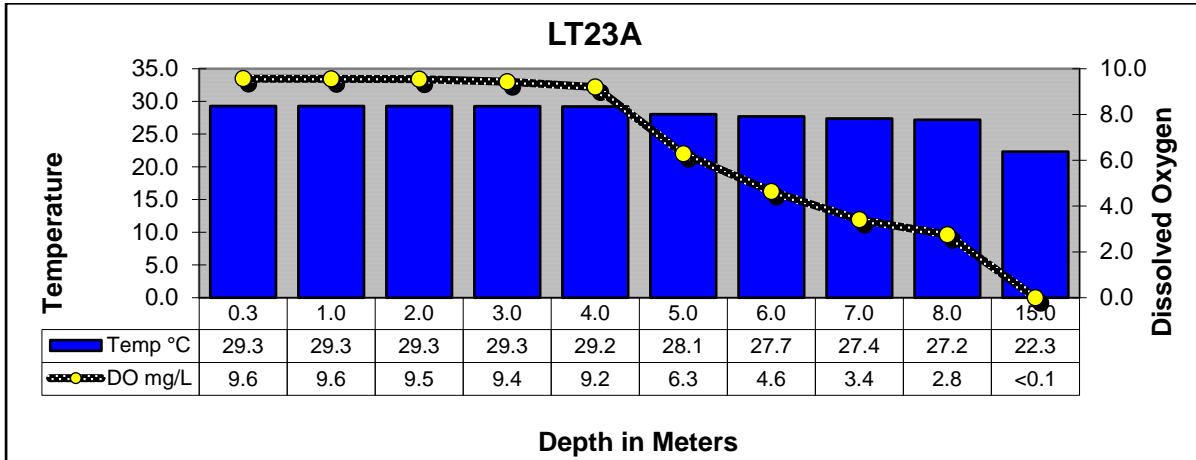
Segment 0507 - Lake Tawakoni

Description: The designated segment includes the impounded Sabine River from Iron Bridge Dam in Rains County up to the normal pool elevation of 437.5 feet. Although much of this segment is rural, it contains two cities with populations greater than 5,000, and one of the four largest cities in the Sabine Basin.

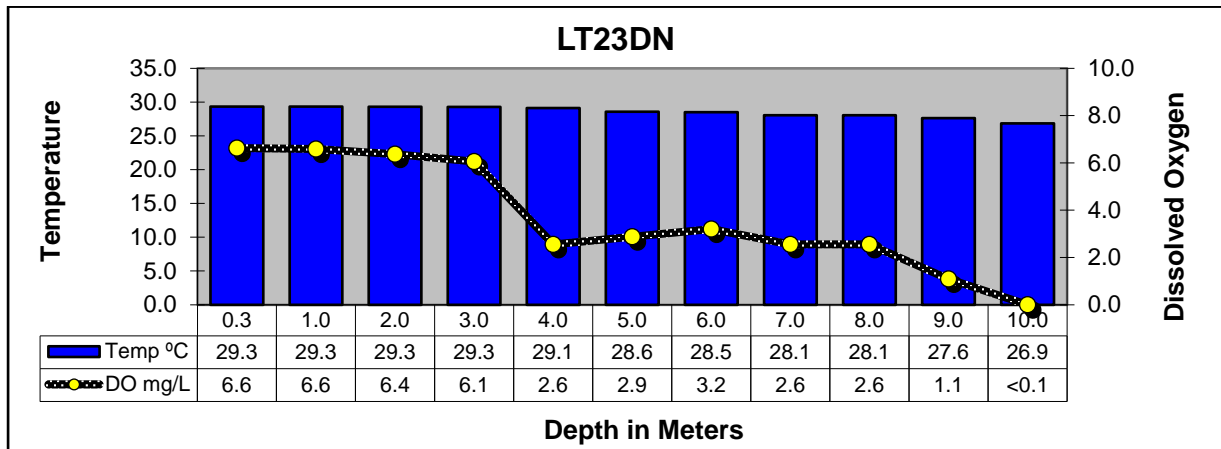
Segment 0507 Water Quality

Date and Time	Station	Depth meters	Temp °C	pH SU	DO mg/L	% Sat	Cond µS/cm	TDS mg/L	Secchi meters	Turbidity NTU	<i>E. coli</i> mpn/100mL
7/9/19 09:55	10434(LT23A)	0.3	29.3	8.9	9.6	126	164	105	1.1	7.05	<1
		1.0	29.3	8.9	9.6	126	164	105			
		2.0	29.3	8.9	9.5	126	164	105			
		3.0	29.3	8.8	9.4	124	164	105			
		4.0	29.2	8.7	9.2	120	164	105			
		5.0	28.1	7.9	6.3	78	167	107			
		6.0	27.7	7.6	4.6	60	167	107			
		7.0	27.4	7.4	3.4	44	167	107			
		8.0	27.2	7.3	2.8	35	167	107			
		9.0	26.5	7.2	0.6	7	167	107			
		10.0	26.0	7.1	0.1	1	169	108			
		11.0	25.8	7.1	<0.1	<1	168	107			
		12.0	25.4	7.1	<0.1	<1	170	108			
		13.0	24.8	7.0	<0.1	<1	173	111			
7/9/19 09:25	21173(LT23DN)	0.3	29.3	8.3	6.6	87	165	105	0.92	9.49	<1
		1.0	29.3	8.3	6.6	87	165	105			
		2.0	29.3	8.3	6.4	84	165	105			
		3.0	29.3	8.2	6.1	80	165	105			
		4.0	29.1	7.6	2.6	33	167	107			
		5.0	28.6	7.5	2.9	38	167	107			
		6.0	28.5	7.4	3.2	42	167	106			
		7.0	28.4	7.4	2.8	36	167	107			
		8.0	28.1	7.3	2.6	33	168	107			
		9.0	27.6	7.2	1.1	14	168	108			
		10.0	26.9	7.1	<0.1	<1	172	110			
7/9/19 09:05	10437(LT23B)	0.3	29.8	8.7	7.9	105	165	105	0.70	7.25	2
		1.0	29.8	8.7	7.9	105	165	105			
		2.0	29.8	8.6	7.8	105	165	105			
		3.0	29.8	8.6	7.8	104	165	105			
		4.0	29.8	8.6	7.8	104	165	105			
		5.0	29.8	8.6	7.7	103	165	105			
		6.0	29.8	8.6	7.7	102	165	105			
		7.0	29.8	8.8	7.6	102	165	105			
		8.0	29.5	7.8	4.0	53	168	107			
		9.0	26.9	7.2	<0.1	<1	179	114			

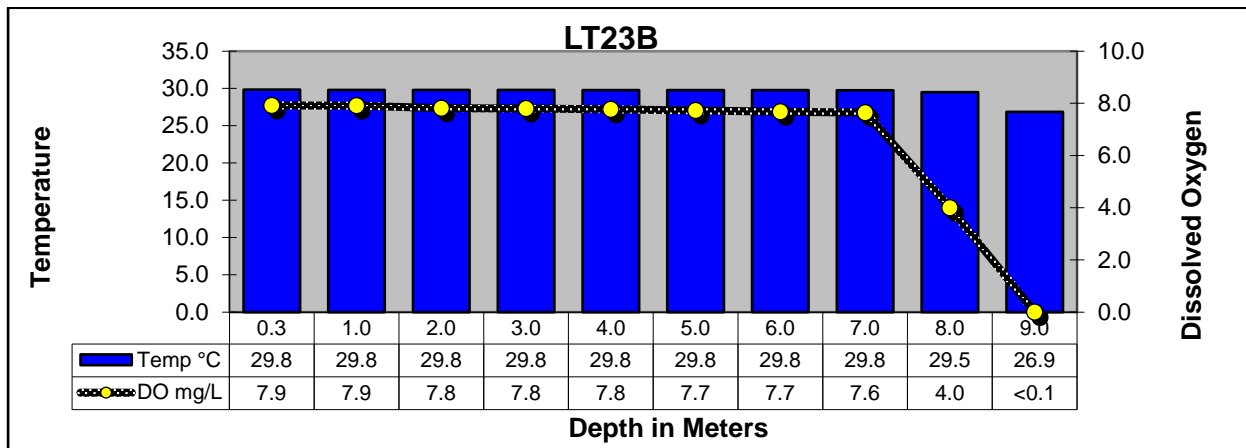
Lake Tawakoni Reservoir Profiles



LAKE TAWAKONI IN THE MAIN LAKE NEAR THE DAM



LAKE TAWAKONI IN WACO BAY EQUIDISTANT FROM FINGER AND SPRING POINTS



LAKE TAWAKONI AT SH276

Segment 0507

