

WATER CONSERVATION AND DROUGHT CONTINGENCY PLAN

REVISED MAY 2014

FINAL

ADOPTED JULY 10, 2014

THIS PAGE LEFT INTENTIONALLY BLANK

Contents

Section 1 – Introduction	1
1.1 Sabine River Authority	1
1.2 Purpose for Water Conservation	1
Section 2 – Service Area and System Evaluation.....	2
2.1 Description of Service Area	2
2.2 SRA Service Area Population, Historical and Projected Use	3
Section 3 – Conservation Practices for a Regional Wholesale Supplier	9
3.1 Targets for Water Savings	9
3.1.1 Target Goals for Municipal Use in Gallons Per Capita Per Day.....	9
3.1.2 Target Goals for Maximum Acceptable Unaccounted-for Water.....	9
3.2 Practices and Devices to Measure Water Diverted.....	10
3.3 Monitoring and Record Management Program	10
3.4 Leak Detection and Repair	10
3.5 Reservoir Systems Operations Plans	10
3.6 Conservation and Drought Contingency Stipulations of Water Sales Contracts	11
3.7 Implementation and Enforcement of Plan	11
3.8 Coordination with the Regional Water Planning Groups (RWPG)	11
3.9 Review and Update Schedule	11
3.10 Additional Water Conservation Strategies.....	12
3.10.1 Education and Information Program.....	12
3.10.2 Technical Assistance in Development of Conservation Plans	12
3.10.3 Best Management Practices (BMPs)	12
3.10.4 Community Assistance Program	13
Section 4 – Drought Contingency Plan.....	14
4.1 Declaration of Policy, Purpose, and Intent	14
4.2 Public Involvement.....	14
4.3 Wholesale Raw Water Customer Education	14
4.4 Coordination with Regional Water Planning Groups (RWPG)	14
4.5 Authorization	15
4.6 Application	15
4.7 Criteria and Actions Required for Drought Response Stages for Iron Bridge and Lake Fork Divisions	15
4.7.1 Stage 1 – Mild Water Shortage Conditions	16
4.7.1.1 Requirement for initiation	16

4.7.1.2	Requirements for termination	16
4.7.1.3	Goal	16
4.7.1.4	Measures	17
4.7.2	Stage 2 – Moderate Water Shortage Conditions.....	17
4.7.2.1	Requirement for initiation	17
4.7.2.2	Requirements for termination	17
4.7.2.3	Goal	17
4.7.2.4	Measures	17
4.7.3	Stage 3 – Severe Water Shortage Conditions	18
4.7.3.1	Requirements for initiation.....	18
4.7.3.2	Requirements for termination	18
4.7.3.3	Goal	18
4.7.3.4	Measures	18
4.7.4	Stage 4 - Critical Water Shortage Conditions.....	19
4.7.4.1	Requirements for initiation.....	19
4.7.4.2	Requirements for termination	19
4.7.4.3	Goal	19
4.7.4.4	Measures	19
4.7.5	Stage 5 – Emergency Water Shortage Conditions (related to drought).....	20
4.7.5.1	Requirements for initiation.....	20
4.7.5.2	Requirements for termination	20
4.7.5.3	Goal	20
4.7.5.4	Measures	20
4.7.6	Emergency Water Shortage Conditions (not related to drought)	21
4.7.6.1	Requirements for initiation.....	21
4.7.6.2	Requirements for termination	21
4.7.6.3	Goal	21
4.7.6.4	Measures	21
4.8	Criteria and Actions Required for Drought Response Stages for Toledo Bend and Gulf Coast Divisions	21
4.8.1	Stage 1 – Mild Water Shortage Conditions	22
4.8.1.1	Requirement for initiation	22
4.8.1.2	Requirements for termination	22
4.8.1.3	Goal	22
4.8.1.4	Measures	22
4.8.2	Stage 2 – Moderate Water Shortage Conditions.....	23
4.8.2.1	Requirement for initiation	23

4.8.2.2	Requirements for termination	23
4.8.2.3	Goal	23
4.8.2.4	Measures	23
4.8.3	Stage 3 – Severe Water Shortage Conditions	24
4.8.3.1	Requirements for initiation.....	24
4.8.3.2	Requirements for termination	24
4.8.3.3	Goal	25
4.8.3.4	Measures.....	25
4.8.4	Emergency Water Shortage Conditions (not related to drought)	25
4.8.4.1	Requirements for initiation.....	25
4.8.4.2	Requirements for termination	25
4.8.4.3	Goal	25
4.8.4.4	Measures.....	26
4.9	Water Allocation.....	26
4.10	Enforcement	26
4.11	Variances.....	27
4.12	Severability	27
4.13	Drought Contingency Plan Update Schedule	28

List of Tables

Table 1 Projected Population for Sabine River Basin 2020-20705

Table 2 Wholesale Customers, Contracted Amount, and Amount Delivered in Calendar 20135

Table 3 Raw Water Provided Under Annual Wholesale Contracts for Previous Five Calendar Years (ac-ft)6

Table 4 Total Amount of Water Diverted for All Water Uses for the Previous Five Calendar Years (ac-ft)7

Table 5 Total Amount of Water Diverted for Municipal Use for the Previous Five Calendar Years (ac-ft)7

Table 6 TCEQ Permit Limits for SRA Systems within the Sabine River Basin.....7

Table 7 Wastewater Treatments Plants Owned and Operated by SRA (CN600801864)8

Table 8 Summary of Drought Triggers and Diversion Reduction Goals for Iron Bridge and Lake Fork Divisions 16

Table 9 Summary of Drought Triggers and Diversion Reduction Goals for the Toledo Bend Division 22

Table 10 Gulf Coast Division Drought Trigger Conditions 24

List of Figures

Figure 1 Map of SRA’s Service Area4

Appendices

- Appendix A – SRA Board Resolution Adopting Conservation and Drought Contingency Plan
- Appendix B – DCP Public Involvement Notifications

Section 1 – Introduction

1.1 Sabine River Authority

The Sabine River Authority of Texas (SRA) was created by the Legislature in 1949 as an official agency of the State of Texas. SRA was created as a conservation and reclamation district with responsibilities to control, store, preserve, and distribute the waters of the Sabine River and its tributary streams in the Texas portion of the Sabine River Basin (Basin) for useful purposes. The Sabine River Authority, State of Louisiana (SRA-LA), was formed in 1950 by the Louisiana Legislature to provide for economic utilization and preservation of the waters of the Sabine River and its tributaries by promoting economic development, irrigation, navigation, improved water supply, drainage, public recreation, and hydroelectric power for the citizens of Louisiana. Representatives from the two states ultimately developed the Sabine River Compact, which is responsible for the allocation of waters in the Basin between the two states. Representatives of the state legislatures and Congress approved the Sabine River Compact in 1953.

The Sabine River has its headwaters in northwest Hunt County at an elevation of about 700 feet (see Figure 1 Map of SRA's Service Area, pg. 4). The river flows eastward and is joined by the South Fork at the intersection of Hunt, Van Zandt, and Rains Counties within Lake Tawakoni. From Lake Tawakoni, the river flows a distance of about 250 channel miles southeasterly to the boundary between Texas and Louisiana near the town of Logansport, Louisiana. The river then flows southward as the Texas-Louisiana boundary, emptying into Sabine Lake on the Gulf Coast. The total drainage area of the Basin is 9,756 square miles, with 7,426 square miles in Texas and 2,330 square miles in Louisiana.¹

SRA is committed to providing adequate supplies of high quality raw, untreated water to municipal, industrial, agricultural, mining, and recreational users. Water conservation is an integral element of that commitment.

1.2 Purpose for Water Conservation

Holders of water rights of 1,000 acre-feet per year (ac-ft/yr) or more for municipal, industrial and other uses and 10,000 ac-ft/yr for irrigation are required to submit a water conservation plan (Title 30, Texas Administrative Code (TAC), Chapter 288). According to TAC Rule §288, conservation means "Those practices, techniques, and technologies that reduce the consumption of water, reduce the loss or waste of water, improve the efficiency in the use of water, or increase the recycling and reuse of water so that a water supply is made available for future or alternative uses."

¹ *Water for Texas*, Texas Department of Water Resources, 1984.

Section 2 – Service Area and System Evaluation

2.1 Description of Service Area

SRA's statutory area of responsibility consists of the total contributing watershed of the Sabine River within the State of Texas and includes all or portions of twenty-one counties (see Figure 1 Map of SRA's Service Area, pg. 4): Collin, Franklin, Gregg, Harrison, Hopkins, Hunt, Jasper, Kaufman, Newton, Orange, Panola, Rains, Rockwall, Rusk, Sabine, San Augustine, Shelby, Smith, Upshur, Van Zandt, and Wood Counties. SRA supplies raw, untreated water within the Basin and also outside of it via interbasin transfers to the Trinity River Basin, Sulphur River Basin, and the Neches River Basin. SRA's service area within its Basin is not well defined because it includes a multitude of water users, some of which purchase raw, untreated water from SRA and others that purchase water from other wholesale water providers or store and divert water under their own water rights. Also, some of SRA's customers have other sources of water supply in addition to SRA.

SRA owns and operates four major projects in the Basin: the John W. Simmons Gulf Coast Canal System, Iron Bridge Dam and Reservoir (Lake Tawakoni), Lake Fork Dam and Reservoir, and Toledo Bend Dam and Reservoir. Water diverted from the John W. Simmons Gulf Coast Canal System is used for industrial, municipal, and irrigation purposes. The three reservoirs primarily serve as sources of raw, untreated municipal water supply and provide recreational opportunities. Hydroelectric power generation is a secondary use of Toledo Bend, a joint project of SRA and SRA-LA.

The Gulf Coast Division operates the John W. Simmons Gulf Coast Canal System that serves the Orange County area. The main canal is approximately 30 miles long and has over 45 miles of lateral canals that branch off to serve customers in the area. There are eleven fixed diversions from the canal system with contract maximums totaling 79,962 acre-feet per year (ac-ft/yr) or 71.4 million gallons per day (mgd). The pump station has a design capacity of approximately 360 mgd and the conveyance capacity is 346,000 ac-ft/yr (309 mgd). The canal system supplies raw, untreated water to one municipality and several industries including petrochemical plants, a pulp and paper mill, a steel mill, and an electric generating station. The canal system also supplies irrigation water for miscellaneous agricultural uses such as crawfish and rice farming. The Gulf Coast Division operates the SRA 1 Plant wastewater treatment plant (WWTP) located in Orange County.

Toledo Bend Dam and Reservoir, managed by the Toledo Bend Division, lies on the state boundary of Texas and Louisiana. The reservoir yield of 2,086,600 ac-ft/yr (1,863 mgd) is shared equally between the two states. The storage capacity of the reservoir is 4,477,000 ac-ft. SRA has eight water supply contracts -- six municipal, one industrial, and one mining -- totaling 27,289 ac-ft/yr (17.2 mgd). In addition to serving as a raw water supply source, Toledo Bend Dam provides hydroelectric power that represented a non-consumptive use of 1,602,350 ac-ft in 2013.

Iron Bridge Dam and Lake Tawakoni are located in parts of Hunt, Rains, and Van Zandt Counties and are managed by SRA's Iron Bridge Division. The reservoir has an as-built storage capacity of 927,440 ac-ft and a permitted yield of 238,100 ac-ft/yr (213 mgd). Iron Bridge Division has a total of nine firm water supply contracts which allow diversion of up to 236,716 ac-ft/yr (211 mgd) of raw, untreated water from Lake Tawakoni. The City of Dallas, through its Dallas Water Utilities Division (DWU), maintains the largest Lake Tawakoni water supply contract with SRA for 80 percent of the yield of the reservoir. The Iron Bridge Division operates and maintains all facilities for the Iron Bridge Dam and Lake Tawakoni Reservoir and also operates both the Wind Point Park wastewater treatment system and the Lake Tawakoni State Park WWTP which serve areas near the reservoir.

Lake Fork Dam and Reservoir, operated by the Lake Fork Division of SRA, is located in Wood, Rains, and Hopkins Counties. The reservoir has an as-built storage capacity of 675,819 ac-ft and a permitted yield of 188,660 ac-ft/yr (168 mgd). Seven entities have Lake Fork Division firm water supply contracts to divert up to 169,082 ac-ft/yr of raw, untreated water from Lake Fork Reservoir, with 35,262 ac-ft/yr of that total amount contracted for release to four downstream customers. DWU maintains the largest current Lake Fork water supply contract with SRA for 131,860 ac-ft/yr. The Lake Fork Division also operates the Lake Fork WWTP No. 1 which serves some areas near the reservoir.

The Lake Tawakoni and Lake Fork water rights have a joint use operation authorization that allows SRA to contract water from one reservoir with the water actually being diverted from the other reservoir, provided all appropriate permit conditions are met. SRA currently allows ten entities with contracts for 19,149 ac-ft/yr of water from Lake Fork Reservoir to divert their Lake Fork Reservoir water supplies from Lake Tawakoni Reservoir under this joint use operation authorization.

The total contracted diversion amounts from Lake Tawakoni and Lake Fork identified above do not include diversions under a contract referred to as the North Texas Municipal Water District (NTMWD) Interim Water Contract. The Interim Water Contract allows NTMWD to use water reserved for SRA wholesale customers (other than Dallas) but not currently needed. The NTMWD Interim Water Contract is subordinate to pre-existing SRA wholesale customers' contracts. The annual amount of interim water available to NTMWD under the NTMWD Interim Water Contract is determined prior to each calendar year based upon the estimated amount of water which is expected to be unused during the coming year by the existing wholesale customers who have contracted for long-term future supplies beyond their current actual required usage.

2.2 SRA Service Area Population, Historical and Projected Use

Although, twenty-one counties lie entirely or partially within the Basin, the population and area currently served by SRA's wholesale raw water supply cannot be defined because many entities in the Basin do not receive any water supply from SRA and many SRA-supplied entities receive water from multiple sources and, in turn, distribute water to multiple customers. Therefore, SRA relies upon the TWDB regional water planning Basin population projections for Basin population estimates.

Figure 1 Map of SRA's Service Area

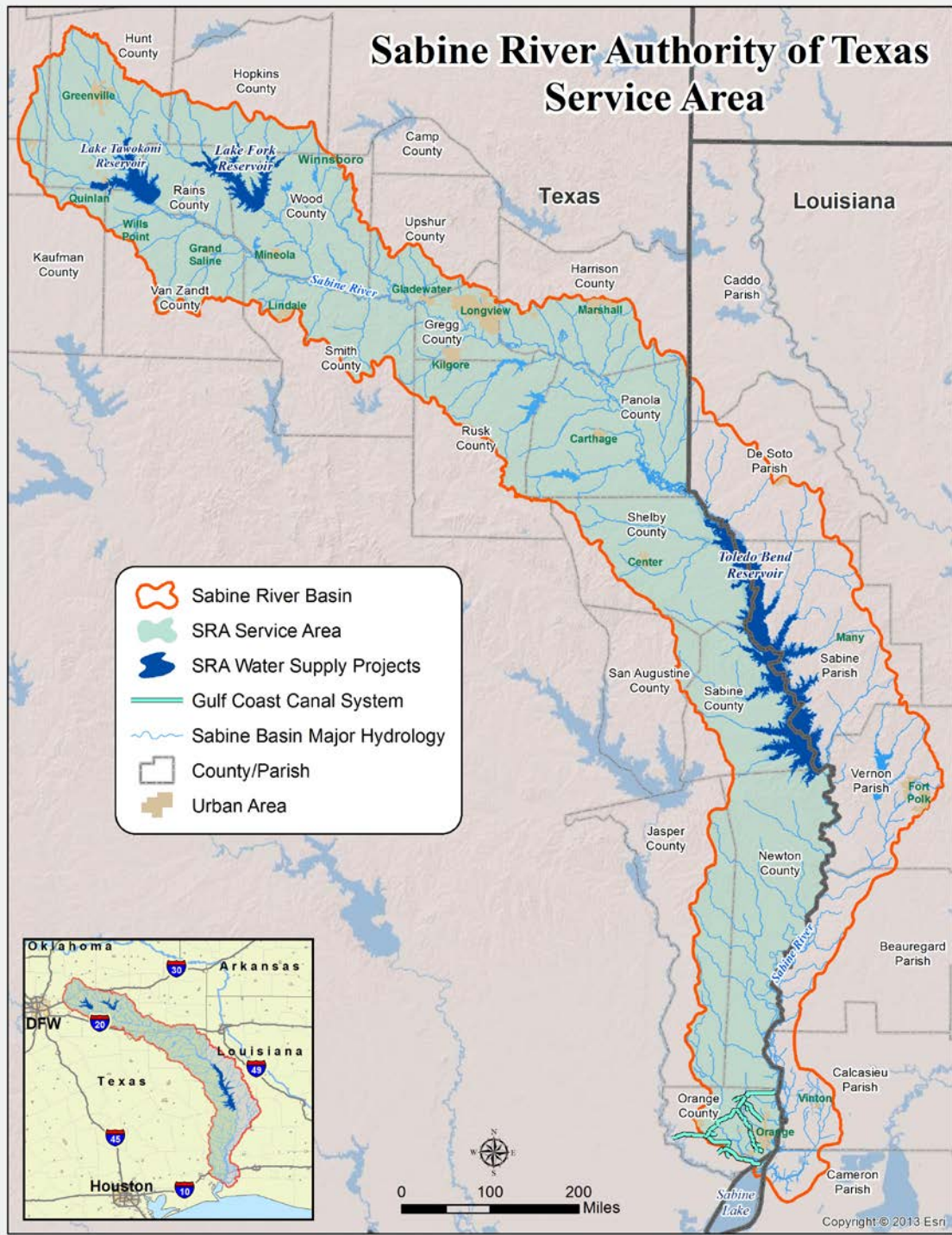


Table 1 shows the projected population for the Basin for each decade until 2070 (through the 50 year planning horizon of the 2016 Regional and 2017 State Water Plans).²

Table 1 Projected Population for Sabine River Basin 2020-2070

Decade	2010 ³	P2020	P2030	P2040	P2050	P2060	P2070
Population	551,471	615,497	684,443	763,348	872,079	1,013,141	1,165,203

Table 2 lists SRA's wholesale raw water customers, the contracted amount of water for each, and the amount of water delivered in Calendar Year 2013. Note that since water availability varies significantly from the upper Basin (Lake Tawakoni/Lake Fork) to the lower Basin (Toledo Bend/Gulf Coast Division), each division is summarized separately and then totaled.

Table 2 Wholesale Customers, Contracted Amount, and Amount Delivered in Calendar 2013

Contractor Name	Contracted Amount (ac-ft)	Calendar 2013 Amount of Water Delivered (ac-ft)
Gulf Coast Division		
Chevron Phillips	1,841	911
City of Rose City	479	85
E.I. DuPont	24,643	16,289
Entergy	4,481	2,281
Firestone Polymers	1,473	658
Gerdau Ameristeel	1,120	1,232
Honeywell	1,120	753
International Paper	22,403	18,321
Lanxess	8,960	3,619
NRG Cottonwood Plant	13,442	4,737
Gulf Coast Division Totals	79,962	48,886
Toledo Bend Division		
Beechwood WSC	190	0
City of Hemphill	743	694
City of Huxley	280	211
El Camino WSC	37	17
G-M WSC	560	0
Pendleton Harbor WSC	57	39
Tenaska	17,922	3,910
XTO	7,500	189
Toledo Bend Division Totals	27,289	5,060
Lake Fork Division		
NTMWD (Able Springs)**	1,120	1,120
Bright Star Salem SUD	840	0
Cash SUD**	4,125	0
City of Dallas	131,860	13,519

² TWDB Complete Regional Population Projections in Texas By River Basins (<http://www.twdb.state.tx.us/waterplanning/data/projections/2017/popproj.asp>, referenced 2/6/2014).

³ 2010 Sabine Basin population estimated by GIS analysis of U.S. 2010 Census Block Data.

Contractor Name	Contracted Amount (ac-ft)	Calendar 2013 Amount of Water Delivered (ac-ft)
City of Edgewood**	840	398
City of Emory**	2,016	0
City of Greenville**	4,480	0
City of Henderson	5,041	1,350
City of Kilgore	6,721	2,240
City of Longview	20,000	6,242
City of Point**	224	0
City of Quitman	1,120	293
Combined Consumers SUD**	2,240	769
Eastman Chemical	3,500	0
Mac Bee SUD**	2,240	633
South Tawakoni WSC**	1,680	334
Tawakoni Plant Farm Ltd**	184	111
Lake Fork Division Totals	188,231	27,009
Iron Bridge Division		
Cash SUD	1,679	1,256
City of Dallas	190,480	106,664
City of Emory	1,213	951
City of Greenville	21,283	6,005
City of Point	224	188
City of West Tawakoni	1,120	262
City of Wills Point	2,240	698
Commerce Water District	8,396	951
NTMWD (Terrell)	10,081	10,081
Iron Bridge Division Totals	236,716	127,056
Total All Division	532,198	208,011

***Indicates a Lake Fork Division contract but water is diverted from Lake Tawakoni under the joint use water right authorization.*

Table 3 Raw Water Provided Under Annual Wholesale Contracts for Previous Five Calendar Years (ac-ft)

Year	Treated Water	Raw Water
2009	NA	153,990
2010	NA	157,737
2011	NA	167,867
2012	NA	153,407
2013	NA	208,011

The total contracted amounts from Iron Bridge Division and Lake Fork Division identified above do not include the up to 40,000 ac-ft/yr of water contracted to NTMWD under the Interim Water Supply Contract as described in Section 2.1.

Table 4 lists the total amount of raw water diverted for the previous five calendar years for all uses, including hydroelectric.

Table 4 Total Amount of Water Diverted for All Water Uses for the Previous Five Calendar Years (ac-ft)

	2009	2010	2011	2012	2013
Jan	42,513	857,215	12,495	12,813	405,702
Feb	21,955	322,012	12,959	13,215	164,676
Mar	278,035	900,688	14,899	293,633	24,569
Apr	369,676	172,904	14,659	347,617	19,463
May	519,997	182,691	15,200	165,289	24,616
Jun	221,943	209,061	21,785	97,974	106,628
Jul	232,995	159,207	21,029	42,130	148,891
Aug	171,391	53,845	23,650	46,316	85,399
Sep	79,952	377,492	19,233	44,784	36,951
Oct	471,607	50,525	19,898	221,831	32,359
Nov	1,398,821	41,159	16,170	38,962	347,653
Dec	799,425	51,018	9,944	41,091	439,314
Totals In ac-ft	4,608,310	3,377,817	201,921	1,365,655	1,836,211

Table 5 illustrates the total amount of water diverted for municipal use for calendar years 2009 - 2013.

Table 5 Total Amount of Water Diverted for Municipal Use for the Previous Five Calendar Years (ac-ft)

Year	Annual Water Diverted for Municipal Use (ac-ft)
2009	104,886
2010	102,990
2011	137,942
2012	121,131
2013	175,011

Table 6 TCEQ Permit Limits for SRA Systems within the Sabine River Basin

System	SRA Water Right No.	Diversion Right (ac-ft/yr)
Toledo Bend	CA-4658	750,000
Gulf Coast Canal System	CA-4662	147,100
Lake Fork	CA-4669	188,660
Lake Tawakoni	CA-4670	238,100
Totals		1,323,860

SRA, as a river authority and a regional raw wholesale water supplier, depends on the TCEQ for data on the wastewater treatment systems in its Basin. Table 7 describes the wastewater treatment plants owned and operated by SRA.

Table 7 Wastewater Treatments Plants Owned and Operated by SRA (CN600801864)

TCEQ Name	TCEQ Number	Design Capacity, MGD	How treated wastewater disposed	Receiving Stream	Location	Description of area serviced
Lake Tawakoni State Park WWTP	RN103014023	0.030	Direct discharge into Lake Tawakoni (Segment 0507)	Lake Tawakoni	Approx. 3500 ft S-SE of Spring Point & approx. 4000 ft NW of Autumn Point near White Deer Ranch on the SW shore of Lake Tawakoni in Hunt County	Serves Tawakoni State Park and adjacent mobile home community
SRA 1 Plant	RN101528420	0.003	Direct discharge into drainage ditch; then to Sandy Creek; then to Cow Bayou Tidal (Segment 0511)	Cow Bayou Tidal	SW corner of intersection of SH 62 and Southern Pacific Railroad approx. 2.7 mi NE of Orangefield in Orange County	Serves a small plastics warehouse in Orange County
Wind Point Park	RN102076510	0.020	Direct ground application via sprinkler system	NA	Approx. 4.5 miles southwest of the intersection of US HWY 69 and FM 1571 on Park Road 55 in Hunt County	Serves a largely transient, seasonal recreation population
Lake Fork WWTP No. 1	RN102183308	0.030	Direct discharge into 6 acre pond; then to Lake Fork (Segment 0512)	Lake Fork	Located 200 ft E of FM 2946 approx. 1.2 mi S of the intersection of FM 2946 and HWY 514 and approx. 7.5 mi ENE of the City of Emory in Rains County	Serves a residential golf course community

Section 3 – Conservation Practices for a Regional Wholesale Supplier

SRA's conservation activities consist of those that improve its efficiency in producing and marketing raw water and those that encourage or support the conservation of supplies by its customers. SRA recognizes that it can promote conservation most effectively by protecting the resources it has developed through efficient system operation and watershed management planning. A discussion follows of the conservation practices applicable to SRA as a wholesale raw water supplier in compliance with Texas Administrative Code (TAC) Rule §288.5.

As described in more detail within the previous sections of this document, while SRA is the exclusive water right holder for both Lake Fork and Lake Tawakoni, large quantities of both reservoirs are contracted to DWU. DWU is a wholesale water provider with a large service area throughout the Dallas Metroplex served by multiple water sources. DWU, as required by TAC Rule §288, also maintains a comprehensive water conservation and drought contingency plan for its system and SRA's Water Conservation and Drought Contingency Plan (WCDCP) is not intended to extend to DWU's service area.

3.1 Targets for Water Savings

3.1.1 Target Goals for Municipal Use in Gallons Per Capita Per Day

Per-capita water use, measured by gallons per person per day (gpcd), varies according to climate, geography, and an individual water utility's population and service profile.⁴ This is especially true in the Sabine Basin due to its large size and variable geographic and hydrologic conditions.

In a special report to the 79th Legislature, the TWDB recommends that a Municipal Water Conservation Plan consider establishing targets and goals for a minimum reduction of one percent in total gpcd, based upon a five-year rolling average, until such time as the entity achieves a total gpcd of 140 or less.⁵ SRA's encourages its municipal water customers to establish this goal within their Water Conservation Plans, and will assist them in reducing their gpcd in any way that is practical, reasonable, and cost-effective.

3.1.2 Target Goals for Maximum Acceptable Unaccounted-for Water

Unaccounted-for water (UFW) is the difference between the amount of water delivered to a customer (by SRA or other supplies) and the amount of water accounted for through individual retail customer metering. As a general rule of thumb, a well-managed water distribution system typically experiences 10-15 percent UFW, and the American Water Works Association (AWWA) Leak Detection and Accountability Committee recommended 10 percent as a benchmark for UFW⁶.

⁴ Several of SRA's municipal customers have other sources of water, including ground water, run-of-river water rights, and other sources of surface water.

⁵ Texas Water Development Board Special Report: Water Conservation Implementation Task Force Report to the 79th Legislature, November 2004, https://www.twdb.texas.gov/conservation/resources/doc/WCITF_Leg_Report.pdf, referenced 3/19/2014 (pg. 5).

⁶ "Committee Report: Water Accountability", AWWA Leak Detection and Water Accountability Committee, Journal AWWA, July 1996.

SRA encourages its municipal water customers to reduce the maximum ratio of UFW to total water supplied of 10 percent. Each customer is encouraged to take measures to control UFW as part of their routine operations; and if the UFW exceeds the 10 percent goal, the customer is encouraged to implement a water audit that identifies and then develops a plan to reduce the source(s) of UFW.

3.2 Practices and Devices to Measure Water Diverted

Flow meters are used to measure and account for all water diverted from SRA's water supply system and all water sales will continue to be metered to accurately record the amount of water used. SRA installs, operates, and maintains measuring equipment at the point of release from the water supply, or requires the customer to install and maintain this equipment. All new and renewed raw water supply contracts require the buyer to furnish and maintain water meters that must measure in accordance with AWWA Standards with an accuracy tolerance not to exceed two percent. Meters are calibrated by their owner with the other party having the right to be present during the calibration.

3.3 Monitoring and Record Management Program

Diversion tracking meters on the canal system are read by SRA personnel and recorded in a journal at the Gulf Coast Division office. Water supply customers taking water from the reservoirs or run of the river read their meters and report the amount of water taken to the appropriate operations division and these totals are subsequently reported to SRA's Operations Branch office. Annually, monthly diversion totals for each SRA water right are reported to the TCEQ. Copies of these reports and supporting data are on file at the Authority General Office in Orange, Texas.

Operational accounting plans for Lake Tawakoni Reservoir and Lake Fork Reservoir are maintained by both SRA and DWU. As a part of the routine monitoring and record management program of the two reservoirs, SRA and DWU storage amounts are estimated each month within Lake Tawakoni and Lake Fork Reservoirs through use of these accounting plans. The accounting plans record monthly inflows, releases, net rainfall/evaporation, and reported diversions from the reservoirs. Both SRA and DWU have established procedures for recording and approving the monthly data required for the accounting plans.

3.4 Leak Detection and Repair

The John W. Simmons Gulf Coast Canal System, the only raw water conveyance system owned and operated by SRA, experiences variable water loss from the canal system depending, to a great extent, on weather conditions. SRA has an ongoing program for rapid leak detection and repair. Key components of this program include:

- Regular inspections and maintenance of the canal system by SRA.
- A biannual inspection of the entire canal system to identify inefficiencies and maintenance requirements.
- Regular maintenance activities and improvements to the pump station and canal systems are identified to ensure that the system is operating as efficiently as possible.

3.5 Reservoir Systems Operations Plans

The Lake Tawakoni and Lake Fork water rights have a joint use operation authorization that allows SRA to contract water from one reservoir with the water actually being diverted from the other reservoir provided all appropriate permit conditions are met. This joint use authorization allows

entities with intakes on Lake Fork to contract for Lake Fork water and divert water it from Lake Tawakoni, and vice versa.

3.6 Conservation and Drought Contingency Stipulations of Water Sales Contracts

In accordance with TAC Title 30, Chapter TAC Title 30, Rule 288.5 (1)(F), SRA water supply contracts require each wholesale customer to develop and implement a water conservation plan or water conservation measures using the applicable elements of Chapter 288. If SRA allows the customer to resell water, then the SRA contract states that the contract for the resale of the water must have water conservation requirements so that each successive customer in the resale of the water will be required to implement water conservation measures in accordance with applicable provisions of Chapter 288. SRA customers must also adopt SRA's WCDCP as well as develop and implement its own TCEQ-approved water conservation and drought contingency plan if required by TCEQ.

3.7 Implementation and Enforcement of Plan

SRA's operations divisions, through the routine operation and maintenance of reservoirs and the canal system, implement conservation measures directed at improving SRA's water conservation and efficiency.

The terms and conditions of new and renewed water contracts specify the required conservation measures for each customer and implement SRA's conservation and drought contingency program as it relates to water sales. Current new and renewed contracts stipulate that all customers 1) must comply with all TCEQ, TWDB, or any other federal, state, or local rules and regulations pertaining to the beneficial use and conservation of water including the development and implementation of conservation plans, 2) must install and maintain measuring equipment meeting AWWA or other current industry standards to accurately measure the amount of water diverted, and 3) must calibrate all measuring equipment at least every two years and provide a report of the calibration to SRA.

The SRA Board of Directors has adopted this WCDCP as indicated by SRA Board Resolution Adopting Conservation and Drought Contingency Plans in Appendix A.

3.8 Coordination with the Regional Water Planning Groups (RWPG)

SRA facilitates regional water conservation and drought contingency planning through its participation in RWPG activities for its service area, mainly Regions D and I but also a small part of Region C. SRA will provide a copy of this WCDCP to the chairman of each of these Regions. SRA serves as a river authority representative for Region D and Region I. As such, SRA is actively involved in regional planning activities in the Basin and adequate coordination between the RWPG planning efforts and those of SRA is assured.

3.9 Review and Update Schedule

SRA will continue to review and update this WCDCP every five years hereafter to coincide with the RWPG planning cycle.

3.10 Additional Water Conservation Strategies

3.10.1 Education and Information Program

SRA offers a coordinated water conservation public education and information program in cooperation with its customers. Key components of SRA's education and information program include:

- SRA welcomes visitors to Division offices and conducts tours of the reservoir facilities to educate the public about the importance of conserving water and protecting water resources from pollution.
- SRA provides knowledgeable staff speakers for civic meetings to discuss water issues, including water conservation.
- SRA participates in the *Major Rivers* conservation education program for fourth grade students.⁷ *Major Rivers* was developed to help educate Texas students about water and the importance of using it wisely. SRA distributes the educational materials at no charge to elementary schools throughout the Basin.
- SRA maintains a website⁸ to provide the public with current information on water resource management activities, conservation opportunities, and data on water supply and quality conditions. A copy of this WCDCP is available for download from the website as well.⁹
- SRA provides an overview of its WCDCP at its annual Sabine Basin Steering Committee meetings which are usually conducted in April as part of the Texas Clean Rivers Program.
- SRA includes water conservation information and materials at public events at which it participates, such as boat shows, eco-fairs, and other community events.

3.10.2 Technical Assistance in Development of Conservation Plans

SRA provides a copy of this WCDCP via its website and offers technical assistance toward the development of conservation plans to each SRA water supply customer.

3.10.3 Best Management Practices (BMPs)

The TWDB has BMP guides for most water user types on its website. SRA provides a link to this TWDB website this on its own website¹⁰ and encourages its water customers to implement water conservation BMPs that are applicable, proven, and cost-effective.

⁷ <http://www.twdb.state.tx.us/conservation/education/kids/majorrivers/>, referenced 1/30/2014.

⁸ <http://www.sratx.org>, referenced 4/28/2009.

⁹ http://www.sratx.org/basin/water_conservation/Conservation_and_Drought_Contingency_Plan/, referenced 2/4/2014.

¹⁰ Water Conservation in the Sabine River Basin, http://www.sratx.org/basin/water_conservation/default.asp, referenced 2/7/2014.

3.10.4 Community Assistance Program

SRA's Community Assistance Program¹¹ provides competitive grants of up to \$10,000 per calendar year that can complement or leverage water project funds for entities within the Basin. Funds provided for the grant program must fall within four project categories, one of which is water conservation.

¹¹ <http://www.sratx.org/services/ecodev/cap/default.asp>, referenced 2/17/2009

Section 4 – Drought Contingency Plan

4.1 Declaration of Policy, Purpose, and Intent

In order to conserve the available water supply and/or to protect the integrity of water supply facilities, with particular regard for domestic water use, sanitation, and fire protection, and to protect and preserve public health, welfare, and safety and minimize the adverse impacts of water supply shortages and other water supply emergency conditions, SRA adopts the following Drought Contingency Plan (DCP).

4.2 Public Involvement

SRA provided its wholesale raw water customers and the public the opportunity to comment on and provide input to the development of this DCP by:

- Posting a draft version of this DCP on the SRA website and accepting comments on the draft DCP.
- Notifying all SRA water customers of the proposed DCP and its location on the SRA website (see Appendix B – DCP Public Involvement Notifications).
- Providing those customers or the public who did not have access to SRA website a copy of the draft DCP at their request.
- Providing notice to the public on the draft DCP and the public meeting on the draft DCP (see Appendix B – DCP Public Involvement Notifications).

SRA provided the opportunity for the public and its wholesale water customers to suggest input into this revision of the DCP at the April 2014 Sabine Basin Steering Committee meetings, part of the Texas Clean Rivers Program. The Sabine Basin Steering Committee is comprised of members from entities and interested parties throughout the Basin. In addition, the current version of SRA's Water Conservation and Drought Contingency Plan (WCDCP) (of which this DCP is a part) is available to the public on SRA's Water Conservation Webpage.¹²

4.3 Wholesale Raw Water Customer Education

Wholesale raw water customer education was provided through the public involvement meetings described in the previous section and through SRA's Water Conservation Webpage. In addition, *Section 3.10.1* of SRA's WCDCP (of which this DCP is a part) outlines the overall education program of SRA.

4.4 Coordination with Regional Water Planning Groups (RWPG)

SRA's service area is located within portions of the Senate Bill 1 East Texas Regional Water Planning Area (Region I), the North East Texas Regional Water Planning Area (Region D), and Region C. SRA will provide a copy of the final adopted DCP to these RWPGs.

¹² http://www.sratx.org/basin/water_conservation/, referenced 2/23/2009.

4.5 Authorization

SRA's Executive Vice President and General Manager (General Manager), as approved by the SRA Board of Directors, is authorized to implement the applicable provisions of this DCP upon determination that implementation is necessary to protect public health, safety, and welfare. The General Manager has the authority to initiate or terminate drought or other water supply emergency response measures as described in this DCP.

4.6 Application

The provisions of the DCP apply to all wholesale customers using water provided by SRA with the limited exception of those customers served under the contract with DWU, as further explained below. As a term of contract renewal, SRA is now requiring its customers to adopt this DCP and to create specific water conservation and drought contingency plans for their respective retail systems. Additionally, the contracts require that the locally developed plans must be at least as stringent as the adopted SRA DCP.

The only exception to these provisions is for the contracts with DWU. The DWU system serves both retail and wholesale customers and is covered by a separate and independent DCP that was developed by DWU for its entire system. As a result of the size and complexity of the DWU system and as a result of the availability of multiple sources of water supply for this system, it is more appropriate that DWU operate under a separate DCP for its entire system. To this end, SRA and DWU maintain monthly accounting plans that allow computation of the individual diversions and the resulting storage allocation within Lake Tawakoni and Lake Fork Reservoirs for each of the two individual entities. Consequently, the criteria and actions required during drought conditions, including the goals for reduced diversions, are applied independently for SRA and DWU based on their respective storage allocations. The following criteria and actions required for drought response stages as outlined below are therefore only applicable to SRA customers other than DWU.

4.7 Criteria and Actions Required for Drought Response Stages for Iron Bridge and Lake Fork Divisions

The General Manager will monitor water supply conditions on a monthly basis, and when conditions warrant, initiate or terminate each stage of the DCP by implementing the following described actions. Customer notification of the initiation or termination of drought response stages will be made by mail, telephone, email, and/or SRA's website. The news media will also be informed.

Lake Tawakoni and Lake Fork Reservoirs are considered a combined system for the SRA DCP. Therefore, the drought triggers will take effect when SRA's allocation of combined storage¹³ in both reservoirs falls below the trigger criteria identified below. The SRA portion of the reservoir storage for Lake Fork and Lake Tawakoni will be computed using an operational drought accounting model. This drought accounting model records monthly inflows, releases, net rainfall/evaporation, and reported diversions. Through use of this drought accounting model, the storage remaining at the end of each month for SRA and DWU can be computed appropriately and each entity can use these monthly values to independently implement required actions within the respective DCPs for each entity.

As outlined in more detail in the report sections below for the Iron Bridge and Lake Fork Divisions, Table 8 summarizes the drought triggers for successively more severe drought stages and corresponding reduction targets for diversions under these drought response stages.

¹³ Lake Tawakoni storage volume is based on 1997 TWDB volumetric survey (http://www.twdb.texas.gov/hydro_survey/tawakoni/1997-04/Tawakoni1997_FinalReport.pdf, referenced 12/18/2013). Lake Fork storage volume is based on 2001 TWDB volumetric survey (http://www.twdb.texas.gov/hydro_survey/Fork/2001-03/Fork2001_FinalReport.pdf, referenced 12/18/2013).

Table 8 Summary of Drought Triggers and Diversion Reduction Goals for Iron Bridge and Lake Fork Divisions

Drought Stage	Drought Trigger: Percent of Combined Reservoir Storage Allocation for SRA*	Drought Trigger: Combined Reservoir Storage Allocation for SRA (ac-ft)	Drought Response: Diversion Reduction Target**
1- Mild	65%	239,504	4,000 ac-ft/yr (~4%)
2- Moderate	55%	202,657	6,000 ac-ft/yr (~6%)
3- Severe	45%	165,810	8,000 ac-ft/yr (~8%)
4- Critical	30%	110,540	10,000 ac-ft/yr (~10%)
5- Emergency***	Time in Stage 4 > 6 mo	N/A	General Mgr Decision

* The drought stages take effect when the SRA allocation of combined storage in Lake Tawakoni and Lake Fork falls to and remains at or below the trigger level for two consecutive months.

** Reduction target percentages are based on the total SRA permanent contracted amount of 102,609 ac-ft/yr for Lake Tawakoni and Lake Fork.

*****Stage 5 is not triggered on the combined reservoir storage remaining, but on the length of time the storage is below 30%.** This is an extreme condition during which the General Manager will determine the drought response based on reservoir conditions and need.

Based on the 1997 TWDB volumetric survey of Lake Tawakoni, its storage volume at the conservation pool elevation of 437.5 ft is 888,137 ac-ft. SRA’s allocation of Lake Tawakoni storage is 177,627 ac-ft (20%). Based on the 2001 TWDB volumetric survey of Lake Fork, its storage volume at the conservation pool elevation of 403.0 ft is 636,133 ac-ft. SRA’s allocation of Lake Fork storage is 190,840 ac-ft (30%). Therefore, SRA’s allocation of the combined storage in Lake Fork and Lake Tawakoni totals to 368,467 ac-ft.

4.7.1 Stage 1 – Mild Water Shortage Conditions

4.7.1.1 Requirement for initiation

SRA will recognize that *mild water shortage conditions* exist in the service areas of the Lake Fork and Iron Bridge Divisions when:

- SRA’s allocation of the combined storage in Lake Tawakoni and Lake Fork falls to and remains at or below 65% of the full storage allocation for two consecutive months (65% of SRA’s allocation of combined Lake Fork and Lake Tawakoni storage is 239,504 ac-ft).

4.7.1.2 Requirements for termination

Termination of the mild water shortage condition and corresponding measures will take place when conditions that initiated the mild water shortage condition no longer exist. Conditions are no longer considered to exist when SRA’s allocation of the combined storage in Lake Tawakoni and Lake Fork remains above the drought trigger for two consecutive months. SRA will inform its customers and the news media of the termination of mild water shortage conditions in the same manner as in its initiation.

4.7.1.3 Goal

Achieve a 4,000 ac-ft/yr reduction of total annual diversions, or an average monthly amount of 333 ac-ft. Based on SRA’s permanent contract amount of 102,609 ac-ft/yr, this amounts to an approximately 4% reduction goal.

4.7.1.4 Measures

- 1) When mild water shortage conditions exist, the allowable contract diversion amount will be reduced until the required diversion goal is achieved by first reducing from temporary and short-term contract/s and, if these contract/s are not sufficient to achieve the reduction goal, by then applying proportionate reductions on the contract amounts of long-term water contract holders.
- 2) During drought conditions, the General Manager may limit SRA customer diversions to each customer's maximum usage over the last five calendar years. The General Manager may waive the limit on a case by case basis for identified, specific purposes.
- 3) SRA will inform its customers of the drought condition by mail, telephone, email, or SRA's website.
- 4) Customers will be asked to activate an appropriate system for answering inquiries from the citizens. Each customer entity in turn will follow its individual measures for the water shortage condition. At the same time, representatives of SRA and its customers will initiate discussion of the drought condition and its impact on the water supply situation with the news media.
- 5) SRA will notify the TCEQ Executive Director within five business days of implementing any mandatory provisions of the DCP.

4.7.2 Stage 2 – Moderate Water Shortage Conditions

4.7.2.1 Requirement for initiation

SRA will recognize that *moderate water shortage conditions* exist in the service areas of the Lake Fork and Iron Bridge Divisions when:

- SRA's allocation of the combined storage in Lake Tawakoni and Lake Fork falls to and remains at or below 55% of the full storage allocation for two consecutive months (55% of SRA's allocation of combined Lake Fork and Lake Tawakoni storage is 202,657 ac-ft).

4.7.2.2 Requirements for termination

Termination of the moderate water shortage condition and corresponding measures will take place when conditions that initiated the moderate water shortage condition no longer exist. Conditions are no longer considered to exist when SRA's allocation of the combined storage in Lake Tawakoni and Lake Fork remains above the drought trigger for two consecutive months. SRA will inform its customers and the news media of the termination of moderate water shortage conditions in the same manner as in its initiation.

4.7.2.3 Goal

Achieve a 6,000 ac-ft/yr reduction of total annual diversions, or an average monthly amount of 500 ac-ft. Based on SRA's permanent contract amount of 102,609ac-ft/yr, this amounts to an approximately 6% reduction goal.

4.7.2.4 Measures

- 1) When moderate water shortage conditions exist, the allowable contract diversion amount will be reduced until the required diversion goal is achieved by first reducing from temporary and short-term contract/s and, if these contract/s are not sufficient to achieve

the reduction goal, by then applying proportionate reductions on the contract amounts of long-term water contract holders.

- 2) During drought conditions, the General Manager may limit SRA customer diversions to each customer's maximum usage over the last five calendar years. The General Manager may waive the limit on a case by case basis for identified, specific purposes.
- 3) SRA will inform its customers by mail, telephone, email, or SRA's website that the drought has reached the moderate trigger level.
- 4) SRA will notify the TCEQ Executive Director within five business days of implementing any mandatory provisions of the DCP.

4.7.3 Stage 3 – Severe Water Shortage Conditions

4.7.3.1 Requirements for initiation

SRA will recognize that *severe water shortage conditions* exist in the service areas of the Lake Fork and Iron Bridge Divisions when:

- SRA's allocation of the combined storage in Lake Tawakoni and Lake Fork falls to and remains at or below 45% of the full storage allocation for two consecutive months (45% of SRA's allocation of the combined Lake Fork and Lake Tawakoni storage is 165,810 ac-ft).

4.7.3.2 Requirements for termination

Termination of the severe water shortage condition and corresponding measures will take place when conditions that initiated the severe water shortage condition no longer exist. Conditions are no longer considered to exist when SRA's allocation of the combined storage in Lake Tawakoni and Lake Fork remains above the drought trigger for two consecutive months. SRA will inform its customers and the news media of the termination of severe water shortage conditions in the same manner as in its initiation.

4.7.3.3 Goal

Achieve an 8,000 ac-ft/yr reduction of total annual diversions, or an average monthly amount of 667 ac-ft. Based on SRA's permanent contract amount of 102,609 ac-ft/yr, this amounts to an approximately 8% reduction goal.

4.7.3.4 Measures

- 1) When severe water shortage conditions exist, the allowable contract diversion amount will be reduced until the required diversion goal is achieved by first reducing from temporary and short term contract/s and, if these contract/s are not sufficient to achieve the reduction goal, by then applying proportionate reductions on the contract amounts of permanent long-term water contract holders.
- 2) During drought conditions, the General Manager may limit SRA customer diversions to each customer's maximum usage over the last five calendar years. The General Manager may waive the limit on a case by case basis for identified, specific purposes.
- 3) When severe water shortage conditions exist, SRA will inform its customers by mail, telephone, email, or SRA's website about the serious water supply situation. The news media also will be informed. Situation reports will be issued to SRA's customers and the news media weekly. SRA may call emergency meetings with its customers to discuss

major operational changes if it finds such action necessary during the progress of a severe drought.

- 4) SRA will notify the TCEQ Executive Director within five business days of implementing any mandatory provisions of the DCP.

4.7.4 Stage 4 - Critical Water Shortage Conditions

4.7.4.1 Requirements for initiation

SRA will recognize that *critical water shortage conditions* exist in the appropriate part(s) of its system when:

- SRA's allocation of the combined storage in Lake Tawakoni and Lake Fork falls to and remains at or below 30% of the full storage allocation for two consecutive months (30% of SRA's allocation of the combined Lake Fork and Lake Tawakoni storage is 110,540 ac-ft).

4.7.4.2 Requirements for termination

Termination of the critical water shortage condition and corresponding measures will take place when conditions that initiated the critical water shortage condition no longer exist. Conditions are no longer considered to exist when SRA's allocation of the combined storage in Lake Tawakoni and Lake Fork remains above the drought trigger for two consecutive months. SRA will inform its customers and the news media of the termination of critical water shortage conditions in the same manner as in its initiation.

4.7.4.3 Goal

Achieve a 10,000 ac-ft/yr reduction of total annual diversions, or an average monthly amount of 833 ac-ft. Based on SRA's permanent contract amount of 102,992 ac-ft/yr, this amounts to an approximately 10% reduction goal.

4.7.4.4 Measures

- 1) When critical water shortage conditions exist, the allowable contract diversion amount will be reduced until the required diversion goal is achieved by first reducing from temporary and short term contract/s and, if these contract/s are not sufficient to achieve the reduction goal, by then applying proportionate reductions on the contract amounts of long-term water contract holders.
- 2) During drought conditions, the General Manager may limit SRA customer diversions to each customer's maximum usage over the last five calendar years. The General Manager may waive the limit on a case by case basis for identified, specific purposes.
- 3) SRA will request its municipal customers to prohibit all outdoor water use (except for livestock watering) and to activate applicable drought measures to minimize indoor uses until the drought condition changes to a Stage 3 (Severe) condition or better.
- 4) When critical water shortage conditions exist, SRA will inform its customers by mail, telephone, email, or SRA's website about the critical water shortage situation. The news media also will be informed. Situation reports will be issued to SRA's customers and the news media weekly. SRA may call emergency meetings with its customers to discuss major operational changes if it finds such action necessary during the progress of a severe drought.

- 5) SRA will notify the TCEQ Executive Director within five business days of implementing any mandatory provisions of the DCP.

4.7.5 Stage 5 – Emergency Water Shortage Conditions (related to drought)

4.7.5.1 Requirements for initiation

SRA will recognize that *emergency water shortage conditions (related to drought)* exist in the appropriate part(s) of its system when:

- SRA's allocation of the combined storage in Lake Tawakoni and Lake Fork falls to and remains at or below 30% of the full storage allocation for **six consecutive months** (30% of SRA's allocation of the combined Lake Fork and Lake Tawakoni storage is 110,540 ac-ft).

4.7.5.2 Requirements for termination

Termination of the emergency water shortage condition (related to drought) and corresponding measures will take place when conditions that initiated the critical water shortage condition (Stage 4) no longer exist. Conditions are no longer considered to exist when SRA's allocation of the combined storage in Lake Tawakoni and Lake Fork remains above the Stage 4 drought trigger for two consecutive months. SRA will inform its customers and the news media of the termination of emergency water shortage conditions (related to drought) in the same manner as in its initiation.

4.7.5.3 Goal

Reduce delivery as appropriate to alleviate the emergency condition.

4.7.5.4 Measures

- 1) When emergency water shortage conditions (related to drought) exist, the General Manager, on a monthly basis, will determine the allowable monthly diversion for each customer based on need and the condition of the reservoirs. The allowable contract diversion amount will be reduced as necessary to address the emergency condition by first reducing from temporary or short term contract/s and, if these contract/s are not sufficient to address the emergency, by then applying proportionate reductions on the contract amounts of long-term water contract holders.
- 2) SRA may reduce water delivery to its customers as the situation dictates. This is further discussed in **WATER ALLOCATION** (Section 4.9).
- 3) When emergency water shortage conditions (related to drought) exist, SRA will inform its customers by mail, telephone, email, or SRA's website about the emergency water supply situation. The news media also will be informed. Situation reports will be issued to SRA's customers and the news media as frequently as the emergency condition dictates. SRA may call emergency meetings with its customers to discuss major operational changes if it finds such action necessary during the progress of a severe drought.
- 4) SRA will prohibit all non-essential outdoor water use and activate applicable drought measures to minimize indoor uses until the drought condition changes to a Stage 3 (Severe) condition or better.
- 5) SRA will notify the TCEQ Executive Director within five business days of implementing any mandatory provisions of the DCP.

4.7.6 Emergency Water Shortage Conditions (not related to drought)

4.7.6.1 Requirements for initiation

SRA will recognize that *emergency water shortage conditions (not related to drought)* exist in the appropriate part(s) of its system when:

- There is a major contamination or a required drawdown of Lake Tawakoni or Lake Fork Reservoir for emergency repairs of major infrastructure, or
- there is a failure or breakdown of a major component of the pumps or delivery system that significantly impacts the supply of water to SRA's customers.

4.7.6.2 Requirements for termination

Termination of the emergency water shortage condition (not related to drought) and corresponding measures will take place when conditions that initiated the emergency water shortage condition no longer exist and the system delivery capacity is returned to normal. SRA will inform its customers and the media of the termination of the emergency water shortage conditions in the same manner as in its initiation.

4.7.6.3 Goal

Reduce delivery as appropriate to address the emergency condition.

4.7.6.4 Measures

- 1) When emergency water shortage conditions exist, SRA will inform its customers by mail, telephone, email, or SRA's website about the emergency water supply situation. The news media also will be informed. Situation reports will be issued to SRA's customers and the news media as frequently as the emergency condition dictates. SRA may call emergency meetings with its customers to discuss major operational changes if it finds such action necessary during the progress of a severe drought.
- 2) SRA may request its customers to prohibit all non-essential water use including outdoor water use (except for livestock watering) and to activate applicable water shortage measures to minimize indoor uses until the emergency water shortage condition is resolved.
- 3) SRA may reduce water delivery to its customers as the situation dictates. This is further discussed in **WATER ALLOCATION** (Section 4.9).
- 4) SRA will notify the TCEQ Executive Director within five business days of implementing any mandatory provisions of the DCP.

4.8 Criteria and Actions Required for Drought Response Stages for Toledo Bend and Gulf Coast Divisions

The General Manager will monitor water supply conditions on a monthly basis and when conditions warrant, initiate or terminate each stage of the DCP and will implement the following described actions. Customer notification of the initiation or termination of drought response stages will be made by mail, telephone, email, and/or SRA's website. The news media will also be informed.

As outlined in more detail in the report sections below for the Toledo Bend Division, Table 9 summarizes the drought triggers for successively more severe drought stages and corresponding water use reduction targets under these drought response stages.

Table 9 Summary of Drought Triggers and Diversion Reduction Goals for the Toledo Bend Division

Drought Stage	Drought Trigger: Water Surface Elevation (ft)*	Drought Response: Water Use Reduction Target
1- Mild	165.1	Voluntary
2- Moderate	162.2	10%
3- Severe	156	20%

* The drought stages take effect when the water surface elevation in Toledo Bend falls to and remains at or below the trigger levels for fourteen consecutive days.

4.8.1 Stage 1 – Mild Water Shortage Conditions

4.8.1.1 Requirement for initiation

SRA will recognize that *mild water shortage conditions* exist in the appropriate part(s) of its system when:

- The water surface elevation in Toledo Bend falls to and remains at or below 165.1 feet for fourteen consecutive days, or
- The flow measured by the U.S. Geological Survey (USGS) gage on the Sabine River near Ruliff, Texas,¹⁴ falls to and remains at or below the mild conditions flow in Table 10 for fourteen consecutive days. The trigger flow at the Ruliff gage depends on the amount of water SRA is contracted to deliver.

4.8.1.2 Requirements for termination

Termination of the mild water shortage condition and corresponding measures will take place when conditions that initiated the mild water shortage condition no longer exist. Conditions are no longer considered to exist when the Toledo Bend elevation remains above the drought trigger for fourteen consecutive days or the USGS gage near Ruliff remains above the mild conditions flow in Table 10 for fourteen consecutive days. SRA will inform its customers and the news media of the termination of the mild water shortage conditions in the same manner as in its initiation.

4.8.1.3 Goal

Inform SRA’s customers and the general public of the situation and encourage voluntary water use reductions.

4.8.1.4 Measures

- 1) When mild water shortage conditions exist, SRA will inform its customers of the drought condition by mail, telephone, email, or SRA’s website. SRA will continue to advise its

¹⁴ USGS 08030500 Sabine Rv nr Ruliff, TX, http://waterdata.usgs.gov/tx/nwis/nwisman/?site_no=08030500&agency_cd=USGS, referenced 2/5/2014.

customers of the Toledo Bend Reservoir elevation and river level at the USGS gage near Ruliff every business day on the SRA website.¹⁵

- 2) Customers will be asked to activate an appropriate system for answering inquiries from the citizens. Each customer entity in turn will follow its individual measures for mild water shortage conditions. At the same time, representatives of SRA and its customers will initiate discussion of the drought condition and its impact on the water supply situation with the news media.

4.8.2 Stage 2 – Moderate Water Shortage Conditions

4.8.2.1 Requirement for initiation

SRA will recognize that *moderate water shortage conditions* exist in the appropriate part(s) of its system when:

- The water surface elevation in Toledo Bend falls to and remains at or below 162.2 feet for fourteen consecutive days, or
- the flow measured by the USGS gage on the Sabine River near Ruliff, Texas, falls to and remains at or below the moderate conditions flow in Table 10 for fourteen consecutive days. The trigger flow at the Ruliff gage depends on the amount of water SRA is contracted to deliver.

4.8.2.2 Requirements for termination

Termination of the moderate water shortage condition and corresponding measures will take place when conditions that initiated the moderate water shortage condition no longer exist. Conditions are considered to no longer exist when the water surface elevation of Toledo Bend remains above the drought trigger for fourteen consecutive days or the flow measured by the USGS gage near Ruliff remains above the moderate conditions flow in Table 10 for fourteen consecutive days. SRA will inform its customers and the media of the termination of the moderate water shortage conditions in the same manner as in its initiation.

4.8.2.3 Goal

Achieve a 10 percent reduction in total water use through implementing reductions in non-essential outdoor water use.

4.8.2.4 Measures

- 1) When moderate water shortage conditions exist, SRA will inform its customers by mail, telephone, email, or SRA's website that the drought has reached the moderate trigger level. This information will be given at weekly intervals as long as the moderate drought condition continues. SRA will continue to advise its customers of the Toledo Bend Reservoir elevation and river level at the USGS gage near Ruliff every business day on the SRA website.
- 2) During the moderate water shortage conditions, SRA may curtail water delivered to its customers, if necessary. The General Manager shall establish the methodology for determining curtailment of the water delivery. See **WATER ALLOCATION** (Section 4.9).
- 3) Using the news media or direct contact, SRA may request its customers to prohibit non-essential outdoor uses such as lawn irrigation, vehicle washing, filling of swimming pools, or routine maintenance of facilities.

¹⁵ http://www.sratx.org/basin/lake_and_river_conditions.asp, referenced 2/17/2005.

- 4) SRA will notify the TCEQ Executive Director within five business days of implementing any mandatory provisions of the DCP.

4.8.3 Stage 3 – Severe Water Shortage Conditions

4.8.3.1 Requirements for initiation

SRA will recognize that *severe water shortage conditions* exist in the appropriate part(s) of its system when:

- The water surface elevation in Toledo Bend falls to and remains at or below 156 feet for fourteen consecutive days, or
- the flow measured by the USGS gage on the Sabine River near Ruliff, Texas, falls to the severe conditions flow in Table 10 for fourteen consecutive days. The trigger flow at the Ruliff gage depends on the amount of water SRA is contracted to deliver.

4.8.3.2 Requirements for termination

Termination of the severe water shortage condition and corresponding measures will take place when conditions that initiated the severe water shortage condition no longer exist. Conditions are no longer considered to exist when the Toledo Bend elevation remains above the drought trigger for fourteen consecutive days or the USGS gage near Ruliff remains above the severe conditions flow in Table 10 for fourteen consecutive days. SRA will inform its customers and the news media of the termination of the severe water shortage conditions in the same manner as in its initiation.

Table 10 Gulf Coast Division Drought Trigger Conditions

Contracted Diversion (ac-ft/yr)	Contracted Diversion (cfs)	Minimum Ruliff Flows for Diversion (cfs)	Trigger Flow at Ruliff Gage		
			Mild Conditions	Moderate Conditions	Severe Conditions
			(cfs)		
50,000	69	173	260	216	173
60,000	83	208	312	260	208
70,000	97	243	365	304	243
80,000	111	278	417	348	278
90,000	124	310	465	388	310
100,000	138	345	518	431	345
110,000	152	380	570	475	380
120,000	166	415	623	519	415
130,000	180	450	675	563	450
140,000	193	483	725	604	483
147,100	203	508	762	635	508

NOTE The minimum flow required at Ruliff to allow the contracted diversion was calculated by multiplying the contracted diversion (in cfs) by 2.5. The following assumptions were used in determining the multiplication factor:

- i) Only half the flow downstream of the gage flows on the Texas side.
- ii) At least 20% of the flow on the Texas side flows past the canal intake structure.
- iii) The mild drought trigger flow is 1.5 times the minimum; the moderate drought trigger flow is 1.25 times the minimum; the severe drought trigger flow is the minimum flow required to allow the contracted diversion.

4.8.3.3 Goal

Achieve a 20 percent reduction in total water use.

4.8.3.4 Measures

- 1) When severe water shortage conditions exist, SRA will inform its customers by mail, telephone, email, or SRA's website about the serious water supply situation. The news media also will be informed. Situation reports will be issued to SRA's customers and the news media weekly. SRA may call emergency meetings with its customers to discuss major operational changes if it finds such action necessary during the progress of a severe drought. SRA will continue to advise its customers of the Toledo Bend Reservoir elevation and river level at the USGS gage near Ruliff every business day on the SRA website.
- 2) SRA may request its customers prohibit all outdoor water use (except for livestock watering) and to activate applicable drought measures to reduce indoor uses until the drought condition changes to a moderate condition or better.
- 3) SRA may reduce water delivery to its customers as the situation dictates. This is further discussed in **WATER ALLOCATION** (Section 4.9).
- 4) SRA will notify the TCEQ Executive Director within five business days of implementing any mandatory provisions of the DCP.

4.8.4 Emergency Water Shortage Conditions (not related to drought)

4.8.4.1 Requirements for initiation

SRA will recognize that *emergency water shortage conditions* exist in the appropriate part(s) of its system when:

- There is a major contamination or a major required drawdown of Toledo Bend for emergency repairs of major infrastructure, or
- the failure of a major component of the pumps or canals in the John W. Simmons Gulf Coast Canal System significantly impacts the supply of water to its customers.

4.8.4.2 Requirements for termination

Termination of the emergency water shortage condition and corresponding measures will take place when conditions that initiated the emergency water shortage condition no longer exist. Conditions are considered to no longer exist when Toledo Bend repairs are made and the reservoir is returning to normal water surface elevation levels, or the repair of any failed equipment is completed and Canal System delivery capacity is returned to normal. SRA will inform its customers and the media of the termination of the emergency water shortage conditions in the same manner as in its initiation.

4.8.4.3 Goal

Reduce delivery as appropriate to address the emergency condition.

4.8.4.4 Measures

- 1) When emergency water shortage conditions exist, SRA will inform its customers by mail, telephone, email, or SRA's website about the water supply situation. The news media also will be informed. Situation reports will be issued to SRA's customers and the news media weekly. SRA may call emergency meetings with its customers to discuss major operational changes if it finds such action necessary during the progress of a severe drought. SRA will continue to advise its customers of the Toledo Bend Reservoir elevation and river level at the USGS gage near Ruliff every business day on the SRA website.
- 2) SRA will request its customers prohibit all outdoor water use (except for livestock watering) and to activate applicable measures to minimize indoor uses until the emergency water shortage condition is terminated.
- 3) SRA may reduce water delivery to its customers as the situation dictates. This is further discussed in **WATER ALLOCATION** (Section 4.9).
- 4) SRA will notify the TCEQ Executive Director within five business days of implementing any mandatory provisions of the DCP.
- 5) Specific to the John W. Simmons Gulf Coast Canal System, a supply restriction resulting from pump or canal failure will tend to be of short duration; but in the event of an emergency condition, SRA will notify its customers of the water supply situation and make such operational changes it finds necessary while the emergency condition exists. Customers will be notified when the situation has been rectified and the system is fully operational.

4.9 Water Allocation

In the event that the trigger criteria specified in the DCP have been met, the General Manager is authorized to initiate all appropriate measures including reductions in the allocation of diversions to achieve the goals of the required drought stage in accordance with Texas Water Code Section 11.039 and with the water allocation policies and procedures defined herein. When water allocation is in effect, water diversions by or deliveries to each wholesale customer shall be limited to the monthly allocation established for each customer during the designated drought condition unless explicitly modified by the General Manager through a variance request by the customer as outlined in Section 4.11 below.

4.10 Enforcement

During any period when allocation of available water supplies is in effect, wholesale customers shall pay the following surcharges on excess water diversions and/or deliveries:

- **Five** times the normal water charge per acre-foot for water diversions and/or deliveries in excess of the monthly allocation up through 5 percent above the monthly allocation.
- **Ten** times the normal water charge per acre-foot for water diversions and/or deliveries in excess of the monthly allocation from 5 percent through 10 percent above the monthly allocation.
- **Twenty Five** times the normal water charge per acre-foot for water diversions and/or deliveries in excess of the monthly allocation from 10 percent through 15 percent above the monthly allocation.

- **Fifty** times the normal water charge per acre-foot for water diversions and/or deliveries more than 15 percent above the monthly allocation.

The above surcharges shall be cumulative. Upper Basin customers (Lake Tawakoni and Lake Fork) will also be subject to the surcharges if they divert in excess of their maximum usage over the last five calendar years during any drought stages unless approved by the General Manger.

4.11 Variances

The General Manager, or designee, may, in writing, grant a temporary variance to water allocation policies provided by this DCP if it is determined that failure to grant such variance would cause conditions adversely affecting an entity's public health, welfare, safety, or economy.

An entity requesting an exemption from the provisions of this DCP shall file a petition for variance with the General Manager within 5 days after notice that water allocation has been invoked. All petitions for variances shall be reviewed by the General Manager, and shall include the following:

- (a) Name and address of the petitioner(s).
- (b) Detailed statement with supporting data and information as to how the allocation of water under the policies and procedures established in the DCP adversely affects the petitioner or what damage or harm will occur to the petitioner or others if petitioner complies with this DCP.
- (c) Description of the relief requested.
- (d) Period of time for which the variance is sought.
- (e) Alternative measures the petitioner is taking or proposes to take to meet the intent of this DCP and the compliance date.
- (f) Other pertinent information.

Variances granted by the General Manager shall be subject to the following conditions, unless waived or modified by the General Manager or designee:

- (a) Variances granted shall include a timetable for compliance.
- (b) Variances granted shall expire when the DCP is no longer in effect, unless the petitioner has failed to meet specified requirements.

No variance shall be retroactive or otherwise justify any violation of this DCP occurring prior to the issuance of the variance.

4.12 Severability

It is hereby declared to be the intention of the SRA Board of Directors that the sections, paragraphs, sentences, clauses, and phrases of this DCP are severable and, if any phrase, clause, sentence, paragraph, or section of this DCP shall be declared unconstitutional by the valid judgment or decree of any court of competent jurisdiction, such unconstitutionality shall not affect any of the remaining phrases, clauses, sentences, paragraphs, and sections of this DCP, since the same would not have been enacted by the Board without the incorporation into this DCP of any such unconstitutional phrase, clause, sentence, paragraph, or section.

4.13 Drought Contingency Plan Update Schedule

In accordance with TAC Rule §288.30 (6), SRA will continue to review and update this DCP every five years hereafter to coincide with the planning cycle of the State's Regional Water Planning Groups.

Appendices

THIS PAGE LEFT INTENTIONALLY BLANK

Appendix A – SRA Board Resolution Adopting Conservation and Drought
Contingency Plan

THIS PAGE LEFT INTENTIONALLY BLANK

RESOLUTION NO. 614

A RESOLUTION OF THE BOARD OF DIRECTORS
ADOPTING A WATER CONSERVATION AND DROUGHT CONTINGENCY PLAN
FOR
THE SABINE RIVER AUTHORITY OF TEXAS

WHEREAS, the Board of Directors recognizes that the amount of water available to the Sabine River Authority of Texas (SRA) and to its wholesale water customers is limited and subject to depletion during periods of extended drought; and,

WHEREAS, the Board of Directors recognizes that natural limitations due to drought conditions and other acts of God cannot guarantee an uninterrupted water supply for all purposes; and,

WHEREAS, Section 11.1271 of the Texas Water Code and applicable rules of the Texas Commission on Environmental Quality require all water rights holders in Texas to prepare a water conservation plan; and,

WHEREAS, Section 11.1272 of the Texas Water Code and applicable rules of the Texas Commission on Environmental Quality require all public water supply systems in Texas to prepare a drought contingency plan; and

WHEREAS, Section 11.039 of the Texas Water Code authorizes water suppliers to adjust the allocation of available water supplies during times of water supply shortage; and

WHEREAS, as authorized under law, and in the best interests of the customers of SRA, the Board of Directors deems it expedient and necessary to establish certain rules and policies for the orderly and efficient management of limited water supplies during drought and other water supply emergencies.

NOW THEREFORE, BE IT RESOLVED BY THE BOARD OF DIRECTORS OF THE SABINE RIVER AUTHORITY OF TEXAS:

SECTION 1. That the Water Conservation and Drought Contingency Plan, revised May 1, 2014, attached hereto as Exhibit "A" is hereby adopted as the official policy of the Sabine River Authority of Texas.

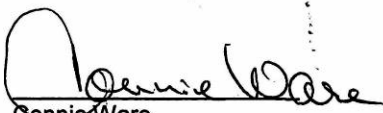
SECTION 2. That the Management, Staff, and Employees of the Sabine River Authority of Texas are hereby directed to implement, administer, and enforce the Water Conservation and Drought Contingency Plan.

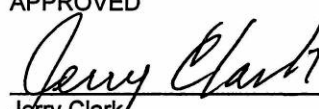
SECTION 3. That this resolution shall take effect immediately upon its passage.

UNANIMOUSLY ADOPTED BY THE BOARD OF DIRECTORS OF THE SABINE RIVER AUTHORITY OF TEXAS ON THIS 10th DAY OF JULY 2014.


Cliff Todd
President, Board of Directors

ATTEST TO:


Connie Ware
Secretary/Treasurer, Board of Directors

APPROVED

Jerry Clark
Executive Vice President
and General Manager

THIS PAGE LEFT INTENTIONALLY BLANK

Appendix B – DCP Public Involvement Notifications

THIS PAGE LEFT INTENTIONALLY BLANK

The Sabine River Authority provided the opportunity for its wholesale water customers and the public to suggest input into this revision of the Water Conservation and Drought Contingency Plan (WCDCP) by means of the Sabine Basin Steering Committee meetings which were conducted in April 2014 as part of the Texas Clean Rivers Program. The Sabine Basin Steering Committee is comprised of members from entities and interested parties throughout the Sabine Basin. These meetings were held on consecutive business days in the upper, middle, and lower Basin.

- Monday, April 7 at Orange, Texas
- Tuesday, April 8 at Longview, Texas
- Wednesday, April 9 at Emory, Texas

Highlights of the WCDCP were presented at each of these meetings and the attendees were asked to submit comments by April 25th, 2014.